

RADIO PROGRAMS

MONDAY, February 10, 1936

THE TIME GIVEN IN ALL PROGRAMS IS ATLANTIC STANDARD
 "The Broadcaster" cannot be responsible for errors or omissions in the following programs or for the last-minute changes by stations or sponsors.

TODAY'S CANADIAN RADIO COMMISSION PROGRAM

- 7.00 p.m.—Overseas Program, BBC re-broadcast, from Ottawa.
- 7.30 p.m.—Canadian Press News.
- 7.35 p.m.—Sunset Silhouettes with the Garnet Trowell Ensemble
- 8.00 p.m.—Rex Battle With His Orch., from Toronto.
- 8.15 p.m.—Presenting: Lila Valiant, soprano.
- 8.30 p.m.—Young Tim, children's serial direction of Edgar Stone.
- 8.45 p.m.—"A Quarter To Eight," variety show, from Windsor.
- 9.00 p.m.—Show Shop Songs, instrumental and vocal ensemble, from Saint John.
- 9.30 p.m.—Ben Kyte's Varieties, an exchange from Detroit, U.S.
- 10.00 p.m.—C'est Rendezvous, modern vocal ensemble and Orch.
- 10.30 p.m.—Melodic Strings.
- 11.00 p.m.—The Youngbloods of Beaver Bend, rural sketch.
- 11.30 p.m.—Geoffrey Waddington with His Royal York Orchestra.
- 11.45 p.m.—Canadian Press News Bulletin and Weather Forecast

CHSJ—Saint John—1120k.

- 6.00 a.m.—Weather Forecast.
- 7.45 a.m.—Recordings.
- 7.50 p.m.—Weather; News; Music.
- 8.15 a.m.—"Thoughts For Today."
- 8.30 a.m.—Musical Program.
- 10.00 a.m.—"Hour of Good Cheer."
- 11.00 a.m.—Community Doings.
- 11.30 a.m.—Moods Musicales.
- 12 noon—Musical Program.
- 12.15 p.m.—Wassons' Musical Program.
- 12.30 p.m.—Ideal Stores' Ltd., music.
- 12.45 p.m.—Driscolls' Program.
- 1.00 p.m.—Weather; Recordings.
- 1.15 p.m.—Bustia's Fine Furniture.
- 2.00 p.m.—Rex Battle's Orch., Toronto
- 4.00 p.m.—"On the Air."
- 5.00 p.m.—News, Musical Program.
- 5.30 p.m.—Recordings.
- 6.00 p.m.—"Lucky," Emerson Bros.
- 6.10 p.m.—Capitol Theatre News.

LOG OF STATIONS

MARITIME PROVINCES—

- CHSJ—SAINT JOHN—1120k.
- CFNB—FREDERICTON—550k.
- CKGW—MONCTON—1370k.
- CHNS—HALIFAX—930k.
- CJCE—SYDNEY—1240k.
- CFCY—CHARLOT'TOWN—630k.
- CHCK—CHARLOT'TOWN—1310k.
- CHGS—SUMMERSIDE—1450k.

UPPER CANADIAN—

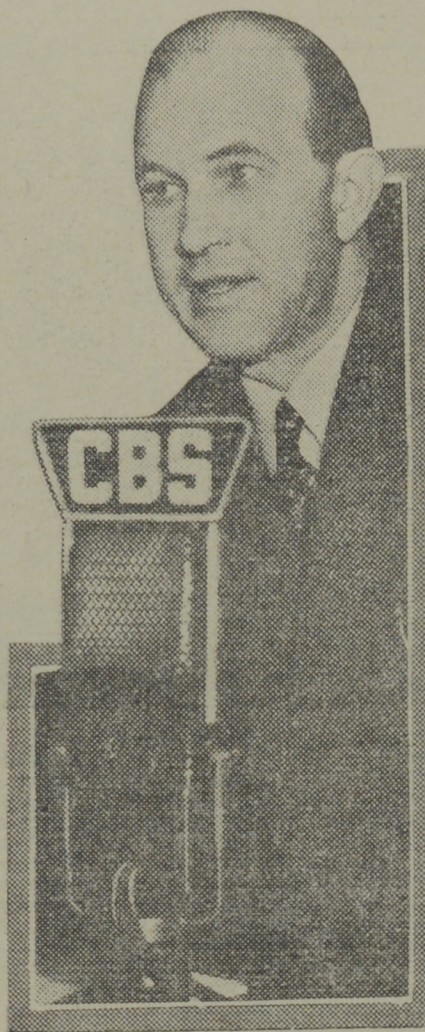
- CFCF—MONTREAL—600k.
- CKAC—MONTREAL—730k.
- CRCM—MONTREAL—910k.
- CHNC—NEW CARLISLE—1210k.
- CFRB—TORONTO—690k.
- CRCT—TORONTO—840k.
- CKLW—WINDSOR—1030k.

UNITED STATES—

- WPG—ATLANTIC CITY—1100k.
- WBAL—BALTIMORE—1060k.
- WLBZ—BANGOR—620k.
- WBZ—BOSTON—990k.
- WEEL—BOSTON—590k.
- WNAC—BOSTON—1230k.
- WGR—BUFFALO—550k.
- WLW—CINCINNATI—700k.
- WTAM—CLEVELAND—1070k.
- WJR—DETROIT—750k.
- WTIC—HARTFORD—1060k.
- WOR—NEWARK—710k.
- WLWL—NEW YORK—1100k.
- WCAU—PHILADELPHIA—1170k.
- KDKA—PITTSBURGH—980k.
- WCSH—PORTLAND—940k.
- WGY—SCHENECTADY—840k.

- 6.15 p.m.—Musical Program.
- 6.45 p.m.—J. Marcus "Nemises Inc."
- 6.30 p.m.—Recordings.
- 7.00 p.m.—Tuberculosis Talk.
- 7.20 p.m.—Musical Program.
- 7.30 p.m. to 12.00 mid.—CRC Programs
- 9.00 p.m.—Show Shop Songs to CRC.

"The Voice"



DR. M. SAYLE TAYLOR,

the Voice of Experience, caught by the candid camera as he discusses another of the innumerable personal problems which his millions of faithful listeners send to him for solution. During his half-dozen fifteen-minute talks over the Columbia-WABC network each week, Dr. Taylor answers at least twenty letters; giving advice to men and women who turn to him to unravel their problems.

CFNB—Fredericton—550k.

- 8.00 a.m.—Musical Clock.
- 8.30 a.m.—M. M. A. Talk.
- 8.35 a.m.—"The Listening Post."
- 9.00 a.m.—Birthday Program.
- 9.15 a.m.—Radio Chain Letter.
- 9.30 a.m.—Maytag Melodies.
- 10.00 a.m.—Concert Period.
- 10.30 a.m.—Popular Songs.
- 10.45 a.m.—Enterprise Foundry Prog.
- 11.00 a.m.—Happy Warrior Hour.
- 12 noon—Purina Program.
- 12.15 p.m.—Building Products' Prog.
- 12.30 p.m.—Sherwin-Williams' Musicales.
- 1.00 p.m.—Frigidaire Program.
- 1.30 p.m.—Marconi Radio Hour.
- 2.30 p.m.—Strings and Vocalist.
- 4.30 p.m.—Music Box Revue.
- 5.00 p.m.—Monitor News Bulletins.
- 5.30 p.m.—Dance Music.
- 5.45 p.m.—Band Parade.
- 6.00 p.m.—Organ Reveries.
- 6.15 p.m.—Canada Cement Program.
- 6.30 p.m.—Robin Hood's Merry Men.
- 6.45 p.m.—MacDonald Program.
- 7.00 p.m.—News Bulletins.
- 7.10 p.m.—Real Life Drama.
- 7.15 p.m.—Wed Chain Program.
- 7.30 p.m. to 12.00 mid.—Canadian Radio Commission Programs

CKCW—Moncton—1370k.

- 8.00 a.m.—Musical Program.
- 8.15 a.m.—News.
- 8.30 a.m.—Devotional Period.
- 8.45 a.m.—Organ Melodies.
- 9.00 a.m.—Popular Music Half-Hour.
- 12 noon—Musical Program.
- 12.15 p.m.—Jack Grainger.
- 12.30 p.m.—Popular Music.
- 1.00 p.m.—Noon-Day Musicales.
- 5.00 p.m.—Musical Program.
- 6.00 p.m.—Concert Hour.
- 7.00 p.m.—Popular Music.
- 4.30 p.m.—Terri La Franconi, tenor.
- 7.30 p.m. to 12.00 mid.—CRC Programs

CHNS—Halifax—930k.

- 10.00 a.m.—Morning Devotions.
- 10.15 a.m.—Musical Program.
- 10.45 a.m.—News Review.
- 11.00 a.m.—Mrs. Dexter's Radio Hour.
- 12 noon—Phinney's Victor Program.
- 12.15 p.m.—Syncopated Spots.
- 12.30 p.m.—Crazy Water Crystallizers.
- 12.45 p.m.—News Bulletin.
- 1.00 p.m.—Time; Market Reports, etc.
- 1.15 p.m.—Oxydol's Own Ma Perkins.
- 5.30 p.m.—Uncle Mel.
- 6.00 p.m.—Time, Music; Services.
- 6.25 p.m.—Horoscope; Services.

PURELLO Flavoring Extracts

"Make Good Cooking BETTER"

H. W. WILSON CO., LTD.

23-27 Water Street
 SAINT JOHN, N. B.



- 6.30 p.m.—Market Reports.
- 6.45 p.m.—The Fireside Hour.
- 7.00 p.m.—Time, Film Flashes.
- 7.30 p.m. to 12.00 mid.—CDC Programs

CKIC—Wolfville—1010k.

- 12 noon—Studio Program.
- 6.00 p.m.—Studio Program.

CJLS—Yarmouth—228.9

- 10.00 a.m.—Morning Devotional.
- 10.20 a.m.—Organ Studies.
- 10.45 a.m.—Woman's Forum.
- 11.30 a.m.—CJLS Program.
- 12 noon—Grand Hotel Program.
- 12.30 p.m.—News; Bait Reports.
- 12.45 p.m.—Fisherman's Broadcast.
- 1.00 p.m.—Weather.
- 5.30 p.m.—Uncle Bob and the Kiddies.
- 6.00 p.m.—Robin Hood and His Men.
- 6.15 p.m.—The Drifters.
- 6.30 p.m.—Majestic Theatre.
- 6.45 p.m.—Wally Gates and His Orch.
- 7.00 p.m.—Halifax Herald's Program.

CFCY—Charlottetown—630k.

- 11.00 a.m.—Woman's Hour.
- 12 noon—Musical Program.
- 12.31 p.m.—Stock Quotations.
- 12.40 p.m.—Home Forum Program.
- 1.00 p.m.—Luncheon Program.
- 5.00 p.m.—Outports Program.
- 6.00 p.m.—Moore & MacLeod.
- 6.30 p.m.—Sleepy Town Express.
- 6.45 p.m.—Huges and Edwards.
- 7.00 p.m.—Stock Quotations.
- 7.25 p.m.—Ironized Yeast.
- 7.30 p.m. to 12.00 mid.—CRC Programs

WJZ—New York—760k.

- 12 noon—Musical Program.
- 12.31 p.m.—Stock Quotations.
- 12.40 p.m.—Home Forum Program.
- 1.00 p.m.—Luncheon Program.
- 5.00 p.m.—Outports Program.
- 6.00 p.m.—Moore & MacLeod.
- 6.30 p.m.—Sleepy Town Express.
- 6.45 p.m.—Huges and Edwards.
- 7.00 p.m.—Stock Quotations.
- 7.25 p.m.—Ironized Yeast.
- 7.30 p.m. to 12.00 mid.—CRC Programs

- 1.00 a.m.—Nelson Russe Program.
- 1.30 a.m.—Griff Williams' Orchestra.

WEAF—New York—660k.

- NBC BLUE Network—WGY (Schenectady), WEEL (Boston), WTAM (Cleveland). See Log top 2nd col.
- 4.15 p.m.—Ma Perkins, drama.
- 4.30 p.m.—Vic and Sade, comedy.
- 4.45 p.m.—The O'Neills, drama.
- 5.00 p.m.—Woman's Radio Review.
- 5.30 p.m.—"Giri Alone," drama.
- 5.45 p.m.—Grandpa Burton, humor.
- 6.00 p.m.—Al Pearce and His Gang.
- 6.30 p.m.—Tom Mix Adventures.
- 6.45 p.m.—James Wilkinson, baritone.
- 7.00 p.m.—Flying Time.
- 7.15 p.m.—Esso News Reporter.
- 7.30 p.m.—Connie Gates, songs.
- 7.30 p.m.—Press-Radio News Service.
- 7.35 p.m.—Resume of Olympic Winter Games, from Germany.
- 7.45 p.m.—Billy and Betty.
- 8.00 p.m.—Amos 'n' Andy, comedy.
- 8.15 p.m.—Uncle Ezra, comedy skit.
- 8.30 p.m.—Edwin C. Hill, news.
- 8.45 p.m.—Education in the News.
- 9.00 p.m.—Hammerstein's Music Hall.
- 9.30 p.m.—"Voice of Firestone," with Nelson Eldy, baritone.
- 10.00 p.m.—A & P Gypsies, music.
- 10.30 p.m.—Vick's Opera House.
- 11.00 p.m.—Carnation Milk Program.
- 11.30 p.m.—National Radio Forum.
- 12.00 mid.—Enoch Light and His Orch.
- 12.30 a.m.—Esso News Reporter.
- 12.35 a.m.—Magnolia Blossoms.
- 1.00 a.m.—Benny Goldman's Orchestra
- 1.30 a.m.—Stan Wood with His Orch.

COSMAN, "THE SIGN MAN"

269 Union Street :: Saint John, N. B.

WABC—New York—860k.

- Columbia CBS chain—WCAU (Philadelphia), WGR (Buffalo), WNAC (Boston). See Log top 2nd col.
- 3.00 p.m.—Between the Book-Ends.
- 3.15 p.m.—Happy Hollow, drama.
- 3.30 p.m.—American School of the Air
- 4.00 p.m.—Lois Long with Guests.
- 4.30 p.m.—Hoosier Hop.
- 5.00 p.m.—Commercial Comment.
- 5.30 p.m.—Chicago Variety Hour.
- 5.45 p.m.—Tea at the Ritz.
- 6.00 p.m.—Terry and Ted Adventures
- 6.15 p.m.—Patti Chapin, songs.
- 6.30 p.m.—All-American Boy, drama.
- 6.45 p.m.—The Goldbergs, drama.
- 7.00 p.m.—Buck Rogers in the 25th Century (fantastic).
- 7.15 p.m.—Bobby Benson, Sunny Jim.
- 7.30 p.m.—Press-Radio News Service.
- 7.35 p.m.—"Vanished Voices," musical and dramatic.
- 8.00 p.m.—Myrt and Marge, drama.
- 8.15 p.m.—Ted Husing and the Charlotiers.
- 8.30 p.m.—"Singin' Sam."
- 8.45 p.m.—Boake Carter, news.
- 9.00 p.m.—Guy Lombardo's Orchestra.
- 9.30 p.m.—Pick and Pat, drama.
- 10.00 p.m.—Lux Radio Theatre.
- 11.00 p.m.—Wayne King and His Orch.
- 11.30 p.m.—Senator L. J. Dickinson.
- 11.45 p.m.—Clyde Barrie, baritone, with Concert Orchestra.
- 12.00 mid.—Jack Denny and His Orch.
- 12.30 a.m.—Vincent Lopez's Orchestra.
- 1.00 a.m.—Carlton Kelsey's Orchestra.
- 1.30 a.m.—Chas. Gaylord's Orchestra.

Play Safe and Enjoy

the comfort and convenience of always having hot water supplied by a

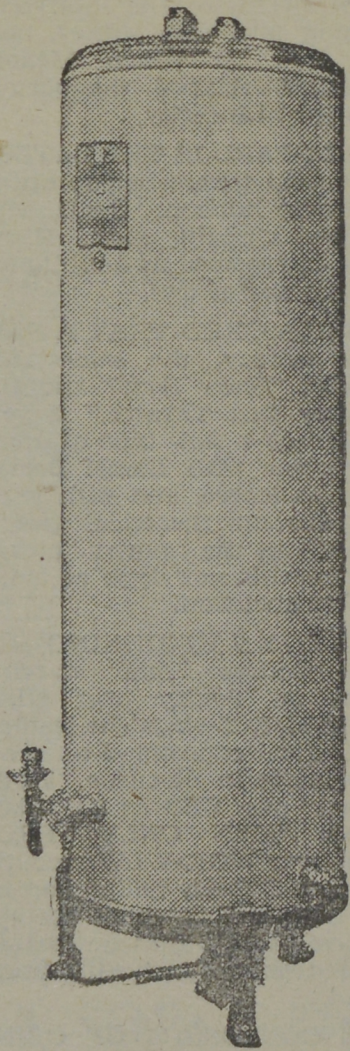
THRIFT Automatic Gas Hot Water Heater

Absolutely no attention required. You may have at your convenience 50 to 85 gallons of Hot Water daily at a SPECIAL MONTHLY FLAT RATE.

This Heater is sold on convenient terms by

NEW BRUNSWICK POWER COMPANY

ASSURED SERVICE
 SAINT JOHN, N. B.



MICKEY MOUSE

A MAN'S BEST FRIEND

By WALT DISNEY

