

# RADIO PROGRAMS

THURSDAY, February 13, 1936

THE TIME GIVEN IN ALL PROGRAMS IS ATLANTIC STANDARD  
"The Broadcaster" cannot be responsible for errors or omissions in the following programs or for the last-minute changes by stations or sponsors.

## TODAY'S CANADIAN RADIO COMMISSION PROGRAM

- 7.00 p.m.—Overseas Program, BBC re-broadcast, from Ottawa.
- 7.30 p.m.—Canadian Press News.
- 8.00 p.m.—Luigi Romanelli and His Orchestra.
- 8.15 p.m.—The Cossack, Adolf Wantroff, baritone.
- 8.30 p.m.—Young Tim, children's serial, with Edgar Stone.
- 8.45 p.m.—Edgar Herring's Instrumental group, from Montreal.
- 9.00 p.m.—The Plainsmen, orchestra, soloist, male quartette.
- 9.20 p.m.—Romance and Dividends in Agriculture, talk.
- 9.30 p.m.—Chamber Music, Montreal.
- 10.00 p.m.—Woodwind Duo.
- 10.15 p.m.—Gentleman Jim Himself.
- 10.30 p.m.—League of Nations Society in Canada.
- 11.00 p.m.—For You, Madame, orchestra and ladies' forum.
- 11.30 p.m.—University Lecture by F. G. Soward, Univ. of B. C.
- 11.45 p.m.—Canadian Press News Bulletin and Weather Forecast

### CHSJ—Saint John—1120k.

- 6.00 a.m.—Weather Forecast.
- 7.45 a.m.—Recordings.
- 7.50 p.m.—Weather; News; Music.
- 8.15 a.m.—"Thoughts For Today."
- 8.30 a.m.—Musical Program.
- 9.45 a.m.—Mason Remedies, "Raymer"
- 10.00 a.m.—"Hour of Good Cheer."
- 11.00 a.m.—Fry-Cadbury Storyette.
- 11.05 a.m.—Community Doings.
- 11.30 a.m.—Moods Musicales.
- 12 noon.—Musical Program.
- 12.15 p.m.—Wassons' Musical Program.
- 12.30 p.m.—Ideal Stores' Program
- 12.45 p.m.—Driscoll's Program.
- 1.00 p.m.—Weather; Musical Program
- 2.30 p.m.—Rex Battle's Orchn., Toronto
- 4.00 p.m.—"On the Air."
- 5.00 p.m.—News. Musical Program.
- 5.30 p.m.—Musical Program.
- 5.55 p.m.—American Clothing House.
- 6.00 p.m.—"Lucky," Emerson Bros.
- 6.10 p.m.—Capitol Theatre News.
- 6.15 p.m.—Musical Program.
- 7.15 p.m.—Robin Hood Mills Ltd.
- 7.30 p.m. to 12.00 mid.—Canadian Radio Commission Programs (Details top of 1st. col.)

### CFNB—Fredericton—550k.

- 8.00 a.m.—Musical Clock.
- 8.30 a.m.—M. M. A. Talk.
- 8.35 a.m.—"The Listening Post."
- 9.00 a.m.—Birthday Program.
- 9.30 a.m.—Merry Melodies.
- 10.00 a.m.—Concert Period.
- 10.30 a.m.—Strings.
- 10.45 a.m.—Enterprise Foundry Prog.
- 11.00 a.m.—Happy Warrior Hour.
- 12 noon.—Purina Program.
- 12.15 p.m.—Building Products' Prog.
- 12.30 p.m.—Sherwin-Williams' Musicales.
- 1.00 p.m.—Frigidaire Program.
- 1.30 p.m.—Marconi Radio Hour.
- 2.30 p.m.—Royal York Orchn., Toronto
- 4.30 p.m.—With the Old Masters.
- 5.00 p.m.—Monitor News Bulletins.
- 5.30 p.m.—Strings.
- 6.00 p.m.—Musical Spots.
- 6.15 p.m.—Canada Cement Program.
- 6.30 p.m.—Burgess Battery Program.
- 6.45 p.m.—MacDonald Program.
- 7.00 p.m.—News Bulletins.
- 7.15 p.m.—Weed Chain Program.
- 7.30 p.m. to 12.00 mid.—CRC Programs

### CKCW—Moncton—1370k.

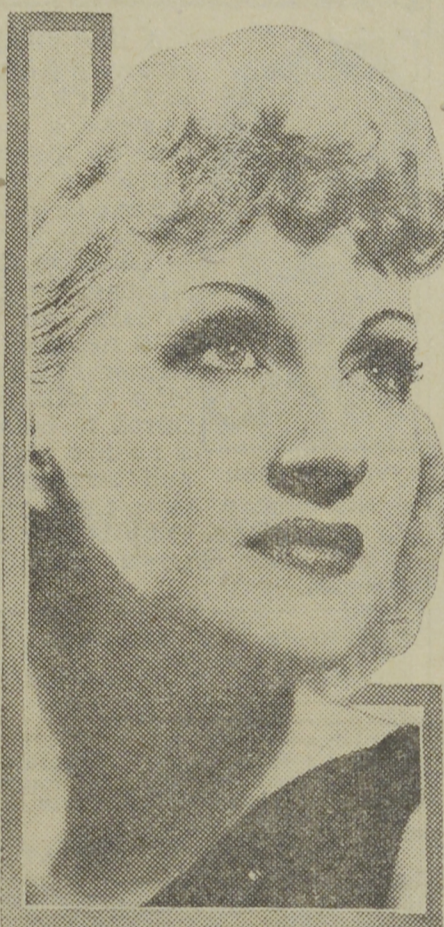
- 8.00 a.m.—Musical Program.
- 8.15 a.m.—News.
- 8.30 a.m.—Devotional Period.
- 8.45 a.m.—Organ Melodies.
- 9.00 a.m.—Popular Music Half-Hour.
- 12 noon.—Musical Program.
- 12.15 p.m.—Jack Granger.
- 12.30 p.m.—Popular Music.
- 1.00 p.m.—Noon-Day Musicales.

## LET GRONDINES

make your worn Silverware like New at small cost.—Nickel, Silver, Gold, Copper and Chromium Plating.—Out-of-town orders receive prompt attention.

JULES GRONDINES  
Phone 3-2761 24 Waterloo St.  
SAINT JOHN, N. B.

## Caravan Star



A new portrait of DEANE JANIS, titian-haired songstress with Glen Gray's Casa Loma Orchestra. Miss Janis, a brilliant newcomer to radio from the Middle West, is featured with Walter O'Keefe and the Casa Loma lads over the WABC-Columbia network every Tuesday and Thursday at 10.00 p.m., A.S.T. She won her role as Caravan soloist this season against a field of eighty-three contestants.

7.00 p.m.—Stock Quotations.  
7.15 p.m.—Souls Typewriter Co.  
7.30 p.m. to 12.00 mid.—CRC Programs  
See details top of 1st Col.

## COSMAN, "THE SIGN MAN"

269 Union Street :: Saint John, N. B.

### WJZ—New York—760k.

- NBC RED Network—WBAL (Baltimore), WBZ (Boston), WLW (Cincinnati), WTIC (Hartford), KDKA (Pittsburgh). See Log top 2nd col.
- 2.30 p.m.—Julia Glass, pianist, with Phyllis Krauter, cellist.
- 2.45 p.m.—Dot and Will, drama.
- 3.00 p.m.—Words and Music.
- 3.30 p.m.—NBC Music Guild.
- 4.15 p.m.—Eastman Symphony Orchn.
- 5.00 p.m.—Betty and Bob, drama.
- 5.15 p.m.—Gene Arnold's Ranch Boys.
- 5.30 p.m.—NBC Radio Guild.
- 6.30 p.m.—The Singing Lady.
- 6.45 p.m.—Little Orphan Annie, drama.
- 7.05 p.m.—James Wilkinson, baritone.
- 7.30 p.m.—Animal Close-Ups.
- 7.35 p.m.—Press-Radio News Service.
- 8.00 p.m.—Muriel Wilson, soprano.
- 7.45 p.m.—Lowell Thomas, news.
- 8.00 p.m.—"Easy Aces," drama.
- 8.15 p.m.—"Nine To Five," drama.
- 8.30 p.m.—Lum and Abner, comedy.
- 8.45 p.m.—Omega Program, with Phil Cook, Ladd Trio, White.
- 9.00 p.m.—Music Is My Hobby.
- 9.15 p.m.—The Rochester Philharmonic Orchestra.
- 10.00 p.m.—Death Valley Days, drama.
- 10.30 p.m.—America's Town Meetings.
- 11.30 p.m.—Roy Shield with His Orchn.
- 12.05 a.m.—Emil Coleman's Orchestra.
- 12.30 a.m.—Ben Bernie and His Orchn.
- 1.00 a.m.—Shandor, the violinist.
- 1.00 a.m.—Ruby Newman's Orchestra.
- 1.30 a.m.—Ed. Fitzpatrick's Orchn.

### WEAF—New York—660k.

- NBC BLUE Network—WGY (Schenectady), WEEL (Boston), WTAM (Cleveland). See Log top 2nd col.
- 5.45 p.m.—Tintype Tenor.
- 6.30 p.m.—The Birth of a Song.
- 7.00 p.m.—Flying Time, aviation.
- 7.20 p.m.—Connie Gates, contralto.
- 7.30 p.m.—Press-Radio News Service.
- 7.35 p.m.—Resume of Olympic Winter Games, from Germany.
- 7.45 p.m.—Billy and Betty, sketch.
- 8.00 p.m.—Amos 'n' Andy, skit.
- 8.15 p.m.—"Popeye the Sailor."
- 8.30 p.m.—City Voices.
- 8.45 p.m.—Life Studies, Tom Powers.
- 9.00 p.m.—Fleischmann Hour, with Rudy Vallee and Orchn.
- 10.00 p.m.—Maxwell House Show Boat, with Lanny Ross, direc.

## LOG OF STATIONS

### MARITIME PROVINCES—

- CHSJ—SAINT JOHN—1120k.
- CFNB—FREDERICTON—550k.
- CKGW—MONCTON—1370k.
- CHNS—HALIFAX—930k.
- CJCB—SYDNEY—1240k.
- CFCY—CHARLOT'TOWN—630k.
- CHCK—CHARLOT'TOWN—1310k.
- CHGS—SUMMERSIDE—1450k.

### UPPER CANADIAN—

- CFCF—MONTREAL—600k.
- CKAC—MONTREAL—730k.
- CRCM—MONTREAL—910k.
- CHNC—NEW CARLISLE—1210k.
- CFRB—TORONTO—690k.
- CRCT—TORONTO—840k.
- CKLW—WINDSOR—1030k.

### UNITED STATES—

- WPG—ATLANTIC CITY—1100k.
- WBAL—BALTIMORE—1060k.
- WLBZ—BANGOR—620k.
- WBZ—BOSTON—990k.
- WEEL—BOSTON—590k.
- WNAC—BOSTON—1230k.
- WGR—BUFFALO—550k.
- WLW—CINCINNATI—700k.
- WTAM—CLEVELAND—1070k.
- WJR—DETROIT—750k.
- WTIC—HARTFORD—1060k.
- WOR—NEWARK—710k.
- WLWL—NEW YORK—1100k.
- WCAU—PHILADELPHIA—1170k.
- KDKA—PITTSBURGH—980k.
- WCSH—PORTLAND—940k.
- WGY—SCHENECTADY—840k.

- 5.00 p.m.—Musical Program.
- 6.00 p.m.—Concert Hour.
- 7.00 p.m.—The Billikins.
- 7.15 p.m.—Real Life Dramas.
- 7.30 p.m. to 12.00 mid.—CRC Programs

### CHNS—Halifax—930k.

- 10.00 a.m.—Morning Devotions.
- 10.15 a.m.—Musical Program.
- 10.40 a.m.—Fry-Cadbury Program.
- 10.45 a.m.—News Review.
- 11.00 a.m.—Mrs. Dexter's Radio Hour.
- 12 noon.—Phinney's Victor Program.
- 12.15 p.m.—Services.
- 12.30 p.m.—Cousins' Radio Parade.
- 12.45 p.m.—News Bulletin.
- 1.00 p.m.—Time; Market Reports, etc.
- 1.15 p.m.—Oxydol's Own Ma Perkins.
- 5.30 p.m.—Uncle Mel.
- 6.00 p.m.—Time, Music; Services.
- 6.25 p.m.—Horoscope; Services.
- 6.30 p.m.—Market Reports.
- 7.30 p.m. to 12.00 mid.—CRC Programs
- 8.00 p.m.—Boston American Program.
- 8.15 p.m.—M. B. Fineberg's Program.

### CKIC—Wolfville—1010k.

- 12 noon.—Studio Program.
- 6.00 p.m.—Studio Program.

### CJLS—Yarmouth—228.9

- 10.00 a.m.—Morning Devotional.
- 10.20 a.m.—Organ Studies.
- 10.45 a.m.—CJLS Half-Hour.
- 12 noon.—Grand Hotel Program.
- 12.15 p.m.—Valetor Program.
- 12.30 p.m.—News; Bait Reports.
- 12.45 p.m.—Fisherman's Broadcast.
- 1.00 p.m.—Weather.
- 5.30 p.m.—Uncle Bob and the Kiddies.
- 6.00 p.m.—Time Signals; The Drifters.
- 6.15 p.m.—Wally Gates and His Orchn.
- 6.30 p.m.—Penticostal Pair.
- 6.45 p.m.—Max Hamilton.
- 7.00 p.m.—Halifax Herald's Program.
- 7.15 p.m.—Wally Gates' Orchestra.

### CFCY—Charlottetown—630k.

- 11.00 a.m.—Woman's Hour.
- 12 noon.—Peerless Beverages.
- 12.15 p.m.—Prowse Bros., Ltd. Program.
- 12.31 p.m.—Stock Quotations.
- 12.40 p.m.—Home Forum Program.
- 5.00 p.m.—Outports Program.
- 5.30 p.m.—Moore & McLeod Program.
- 6.00 p.m.—Robin Hood and His Men.
- 6.15 p.m.—Red Rose Tea Program.
- 6.30 p.m.—Sleepy Town Express.
- 6.45 p.m.—Westinghouse Program.

BUY NEW BRUNSWICK-MADE PRODUCTS

# QUALITY foods

that you'll enjoy!

## S & F Brand

### BOLOGNA COOKED HAM SAUSAGES

These and our other Delicious Pork Foods are unexcelled in Quality and Flavor and are Reasonably Priced at Your Dealers.

## SLIPP & FLEWELLING, LIMITED

PORK PACKERS AT SAINT JOHN

- 11.00 p.m.—Bing Crosby with Jim Dorsey's Orchestra.
- 12.00 mid.—Harold Nagel's Orchestra.
- 12.15 a.m.—Phil Levant's Orchestra.
- 12.35 a.m.—Meredith Willson's Orchn.
- 1.00 a.m.—Benny Goodman's Orchn.
- 1.30 a.m.—Sammy Kaye's Orchestra.

### WABC—New York—860k.

- Columbia CBS chain—WCAU (Philadelphia), WGR (Buffalo), WNAC (Boston). See Log at top 2nd col.
- 5.00 p.m.—Salvation Army Staff Band.
- 5.15 p.m.—Howells and Wrights.
- 5.30 p.m.—Greetings from Kentucky.
- 6.00 p.m.—Terry and Ted Adventures.
- 6.15 p.m.—Jimmy Farrell, songs.
- 6.30 p.m.—All-American Boy.
- 6.45 p.m.—The Goldbergs, drama.
- 7.00 p.m.—Vocals by Verrill.
- 7.15 p.m.—Parade of Youth.
- 7.30 p.m.—Press-Radio News Service.
- 7.35 p.m.—George Hall and His Orchn.
- 7.45 p.m.—Imperial Hawaiian Band.
- 8.00 p.m.—Myrt and Marge, drama.
- 8.15 p.m.—Krueger Musical Toast.
- 8.30 p.m.—Kate Smith's Coffee Time.
- 8.45 p.m.—Boake Carter, news.
- 9.00 p.m.—Harv and Esther, comedy.
- 9.30 p.m.—"The March of Time."
- 10.00 p.m.—Camel Caravan.
- 10.30 p.m.—CBS Dramatic Guild.
- 11.00 p.m.—Heldt's Brigadiers.
- 11.30 p.m.—Phil Cook, Just Another Amateur.
- 12.00 mid.—Guy Lombardo and His Royal Canadians.
- 12.30 a.m.—Isham Jones and His Orchn.
- 1.00 a.m.—George Olsen and His Orchn.

## Master Mind Behind Great Britain's Anti-Spy System

(Continued from Page 17)

Not even Cabinet Ministers and high Admiralty officials knew anything of the work of 40 O.B. Yet within its four walls was made perhaps the greatest "scoop" of the War—the communication from Herr Zimmerman, German Foreign Secretary, to Count Bernstorff, German Ambassador in Washington, that announced Germany's intention to start an unrestricted submarine campaign. This message, it was claimed, was directly re-

sponsible for bringing the United States into the War.

The sea was not the only concern of those in "40 O.B.," who warned the French of the forthcoming great attack on Verdun.

And, as the war went on, spy after spy throughout the length and breadth of Great Britain, was kept under constant surveillance until the hour had struck for him to be gathered into the net.

## SPLIT

A guard taking over a local train noticed a large piece of fluff in his whistle, and on his shaking it the pea fell out and was lost.

There were only a few minutes to go, so he hurriedly called a porter and sent him out to buy a bag of peas.

On the return of the porter, the guard realized with disgust that the shop had given him split peas; there was no time to change them, so, quickly inserting one into his whistle, he stood back, waved his flag, blew hard—and only half the train moved out!

## M-M-M!

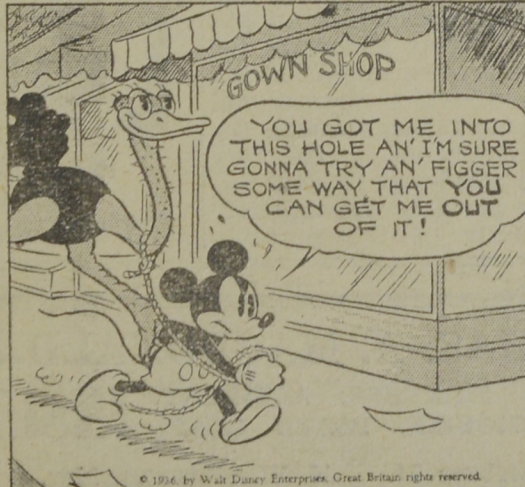
Charles M. Schwab says the longer the depression lasts, the greater will be the following prosperity. That's like sitting on a hot stove—the longer you sit the better it feels when you get up.

## AMAZES SCIENTISTS

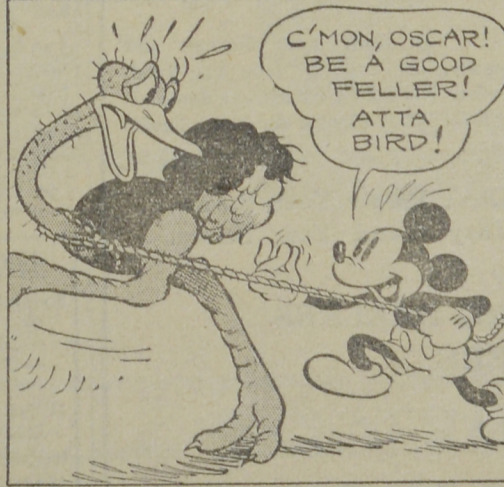
Some of the boy's methods are quite ingenious, the professors at the Institute have found. For instance, when asked to multiply 20 by 24 mentally, he gave the answer—600—in a few seconds.—Pittsburgh paper.

## MICKEY MOUSE

MICKEY IS NOW IN DEBT \$264-13—WITH ONLY TWO WEEKS IN WHICH TO PAY—AND NO WAY TO RAISE THE MONEY!



## FEATHERING HIS NEST—EGG!



## By WALT DISNEY

