

# RADIO PROGRAMS

SATURDAY, March 14, 1936

THE TIME GIVEN IN ALL PROGRAMS IS ATLANTIC STANDARD. "The Broadcaster" cannot be responsible for errors or omissions in the following programs or for the last-minute changes by stations or sponsors.

### TODAY'S CANADIAN RADIO COMMISSION PROGRAM

- 6.30 p.m.—Hotel Frontenac Orchestra.
- 6.45 p.m.—Closing Stock Quotations, Montreal Stock Exchange.
- 7.05 p.m.—Temple of Song Choir, exchange from Chicago.
- 7.30 p.m.—En Dinant, CRBC Dinner Hour Concert Music.
- 8.00 p.m.—Rex Battle and His Orch.
- 8.15 p.m.—Men of Melody, the Guardsmen, male octette.
- 8.30 p.m.—Piano Recital.
- 8.45 p.m.—Book Review by Prof. J. F. Macdonald, Toronto.
- 9.00 p.m.—"Cotters' Saturday Night," Scotch program, Sydney.
- 9.30 p.m.—"Let's Go To Music Hall," old-time Music Hall program by George Young.
- 10.00 p.m.—N. H. L. Hockey Game.
- 11.30 p.m.—Don Bestor and His Orch.
- 11.45 p.m.—Canadian Press News Bulletin and Weather Forecast

#### CHSJ—Saint John—1120k.

- 6.00 a.m.—Weather Forecast.
- 7.45 a.m.—News, Weather, Music.
- 8.15 a.m.—"Thoughts For Today."
- 8.30 a.m.—Musical Program.
- 10.00 a.m.—"Hour of Good Cheer."
- 11.30 a.m.—Moods Musicales.
- 12 noon—Musical Program.
- 12.15 p.m.—Wassons' Musical Program.
- 12.45 p.m.—Ideal Stores' Musicales.
- 1.00 p.m.—Driscolls' Program.
- 1.15 p.m.—Musical Program.
- 2.30 p.m.—Rex Battle's Orch., Toronto
- 5.00 p.m.—"On the Air."
- 5.05 p.m.—News; Musical Program.
- 5.30 p.m.—Musical Program.
- 6.00 p.m.—Capitol Theatre News.
- 6.05 p.m. to 12.00 mid.—CRC Programs See details top of 1st col.
- 7.15 p.m.—Robin Hood Mills Program
- 10.00 p.m.—N.H.L. Hockey Game.

#### CKCW—Moncton—1370k.

- 8.00 a.m.—Musical Program.
- 8.10 a.m.—News Items.
- 8.20 a.m.—Devotional Period.
- 8.45 a.m.—Organ Melodies.
- 9.00 a.m.—Popular Music Half-Hour.
- 12 noon—Musical Program.
- 12.15 p.m.—Jack Grainger.
- 12.30 p.m.—Popular Music.
- 1.00 p.m.—Noon-Day Musicales.
- 5.00 p.m.—Musical Program.
- 6.00 p.m.—Concert Hour.
- 7.00 p.m.—Popular Music.
- 7.30 p.m. to 12.00 mid.—CRC Programs See details top of 1st Col.

#### CFNB—Fredericton—550k.

- 8.00 a.m.—Musical Clock.
- 8.30 a.m.—M. M. A. Talk.
- 8.35 a.m.—"The Listening Post."
- 9.00 a.m.—Birthday Party (Children's)
- 9.30 a.m.—Merry Melodies.
- 10.00 a.m.—Concert Period.

## New Spring Styles

in a great variety of materials. Made-to-your-measure. Guaranteed fit.

American Ladies' Tailoring  
631 Main St. 'Phone 3-3841

## E. S. STEPHENSON & CO., LIMITED

Nelson Street, Saint John, N. B.  
ENGINEERS MANUFACTURERS AGENTS  
SPECIALIZING IN  
MECHANICAL and ELECTRICAL EQUIPMENT

### LOG OF STATIONS

#### MARITIME PROVINCES—

- CHSJ—SAINT JOHN—1120k.
- CFNB—FREDERICTON—550k.
- CHNS—HALIFAX—930k.
- CJCB—SYDNEY—1240k.
- CFCY—CHARLOT'TOWN—630k.
- CHCK—CHARLOT'TOWN—1310k.
- CHGS—SUMMERSIDE—1450k.

#### UPPER CANADIAN—

- CFCF—MONTREAL—600k.
- CKAC—MONTREAL—730k.
- CRCM—MONTREAL—910k.
- CHNC—NEW CARLISLE—1210k.
- CFRB—TORONTO—600k.
- CRCT—TORONTO—840k.
- CKLW—WINDSOR—1030k.

#### UNITED STATES—

- WPG—ATLANTIC CITY—1100k.
- WBAL—BALTIMORE—1060k.
- WLBZ—BANGOR—620k.
- WBZ—BOSTON—990k.
- WEEL—BOSTON—590k.
- WNAC—BOSTON—1230k.
- WGR—BUFFALO—550k.
- WLW—CINCINNATI—700k.
- WTAM—CLEVELAND—1070k.
- WJR—DETROIT—750k.
- WTIC—HARTFORD—1060k.
- WOR—NEWARK—710k.
- WLWL—NEW YORK—1100k.
- WCAU—PHILADELPHIA—1170k.
- KDKA—PITTSBURGH—980k.
- WCSH—PORTLAND—940k.
- WGY—SCHENECTADY—840k.

- 10.30 a.m.—The Veiled Lady of Mystery
- 10.45 a.m.—Enterprise Foundry Prog.
- 1.00 a.m.—Happy Warrior Hour.
- 2 noon—Purlina Program.
- 12.15 p.m.—Building Products' Program
- 12.30 p.m.—Sherwin-Williams' Musicales.
- 1.00 a.m.—Frigidaire Program.
- 1.30 p.m.—Marconi Radio Hour.
- 2.30 p.m.—Royal York Orch., Toronto.
- 4.30 p.m.—All Request Program.
- 5.00 p.m.—Monitor News Bulletins.
- 5.30 p.m.—Strings.
- 5.45 p.m.—The Veiled Lady of Mystery
- 6.00 p.m.—Concert Hall of the Air.
- 6.15 p.m.—Canada Cement Program.
- 6.30 p.m.—Burgess Battery Program.
- 6.45 p.m.—MacDonald Program.
- 7.00 p.m.—News Bulletins.
- 7.15 p.m.—Souvenirs in Rhythm.
- 7.30 p.m.—CRC Programs. (See details at top of 1st column)
- 10.00 p.m.—N.H.L. Hockey Broadcast.

#### CHNS—Halifax—930k.

- 5.15 p.m.—Uncle Mel.
- 6.13 p.m.—Schedule, News, Temper.
- 6.25 p.m.—Horoscope; Services.
- 6.30 p.m.—Market Reports.
- 7.00 p.m.—Jerry Naugler and His Orch.
- 7.30 p.m. to 12.00 mid.—CRC Programs See details top of 1st col.

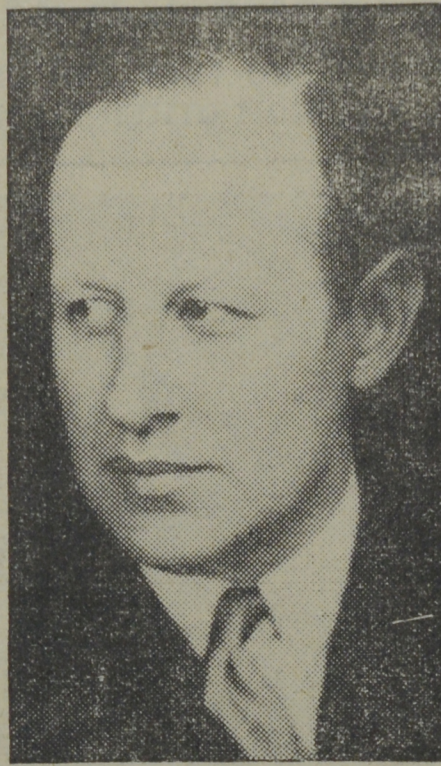
#### CKIC—Wolfville—1010k.

- 6.00 p.m.—Studio Program.

#### CJLS—Yarmouth—228.9

- 10.00 a.m.—Morning Devotional.
- 10.30 a.m.—Organ Studies.
- 11.00 a.m.—CJLS Half-Hour.
- 11.30 a.m.—Sustaining Program.
- 12 noon—Grand Hotel Program.
- 12.30 p.m.—News; Bait Reports.
- 12.45 p.m.—Fisherman's Broadcast.
- 1.00 p.m.—Weather.
- 5.30 p.m.—Uncle Bob and the Kiddies.
- 6.00 p.m.—Charles E. Dyke.
- 6.15 p.m.—"Down Melody Lane."
- 6.30 p.m.—Piano Moods (amateurs).
- 7.00 p.m.—Gateway Program.

### Conductor



EUGENE GOOSSENS,

conductor of the Cincinnati symphony orchestra, greeted his many friends in the United States, Canada and England on February 15, when the Cincinnati symphony orchestra made its radio debut over the networks. The symphony concerts will be carried by the Canadian, Yankee and Mutual networks on March 14, March 28 and April 25.

#### CFCY—Charlottetown—630k.

- 11.00 a.m.—Women's Program.
- 12 noon—Prowse Bros., Ltd. Program.
- 12.15 p.m.—The Goodman Company.
- 12.30 p.m.—Stock Quotations.
- 12.40 p.m.—Home Forum Program.
- 5.00 p.m.—Outports Program.
- 6.01 p.m.—Westinghouse Program.
- 6.15 p.m.—Red Rose Tea Program.
- 6.30 p.m.—Sleepy Town Express.
- 6.45 p.m.—Robin Hood Mills Program.
- 7.00 p.m.—Stock Quotations.
- 7.30 p.m. to 12.00 mid.—CRC Programs (Details top of 1st. col.)
- 10.00 p.m.—General Motors Hockey.

#### CHGS—Summerside—1500k.

- 7.30 a.m.—The Eye Opener.
- 8.30 a.m.—Time, Close Down.
- 10.00 a.m.—Morning Melodies.
- 10.30 a.m.—Home Hour.
- 11.25 a.m.—Rural Program.

## MR. LANDLORD!

Good Tenants, when selecting a flat, demand good floors. If your floors are not in good condition, you should place your order immediately for

# MARITIME HARDWOOD FLOORING

THE KIND THAT'S SURE TO PLEASE YOU

## MURRAY & GREGORY, Ltd.

Phone 3-3242 LUMBER—GLASS—MILLWORK Saint John, N. B. BUILDERS' SUPPLIES

- 12.15 p.m.—Russian Novelty Orchestra.
- 12.25 p.m.—Time, Weather, etc.
- 12.30 p.m.—Guy Lombardo's Orch.
- 12.45 p.m.—Spanish Music.
- 1.00 p.m.—Midday Music.
- 2.30 p.m.—Time, Close Down.
- 4.00 p.m.—Afternoon Music.
- 4.30 p.m.—Martial Moments.
- 4.45 p.m.—Organ Melodies.
- 5.00 p.m.—Twilight Hour.
- 5.30 p.m.—Variety Program.
- 6.00 p.m.—Musical Merriment.
- 6.25 p.m.—Time, Announcements.
- 6.30 p.m.—Canadian Radio Com. Prog. See details top 1st. col.
- 6.45 p.m.—Evening Melodies.
- 11.00 p.m.—Time, National Anthem.

#### WJZ—New York—760k.

- NBC BLUE Network—WGY (Schenectady), WEEL (Boston), WTAM (Cleveland). See Log top 2nd col.
- 2.55 p.m.—Metropolitan Opera Co.
- 6.00 p.m.—Musical Adventures.
- 6.15 p.m.—Jackie Heller, tenor.
- 6.30 p.m.—Treasure Trails.
- 6.45 p.m.—Dog D amas.
- 7.05 p.m.—Temple of Song.
- 7.30 p.m.—Press-Radio News Service.
- 7.35 p.m.—Jamboree, variety program.
- 8.00 p.m.—Home Town, drama.
- 8.15 p.m.—King's Jester, quartette.
- 8.30 p.m.—"Message of Is ael," talk.
- 9.00 p.m.—Tom Coakley and His Orch.
- 9.15 p.m.—To be announced.
- 10.15 p.m.—Armchair Quartette.
- 10.30 p.m.—National Barn Dance.
- 11.30 p.m.—To be announced.
- 12.00 mid.—Eso News Reporter.
- 12.05 a.m.—Russ Morgan and His Orch.
- 12.30 a.m.—Glen Gray with His Orch.
- 1.00 a.m.—Carefree Carnival.
- 1.30 a.m.—Griff Williams' Orchestra.

#### WEAF—New York—660k.

- NBC RED Network—WBAL (Baltimore), WBZ (Boston), WLW (Cincinnati), WTIC (Hartford), KDKA (Pittsburgh). See Log top 2nd col.
- 6.30 p.m.—Kaltenmeyer's Kindergarten
- 7.02 p.m.—Otto Thurn's Orchestra.
- 7.30 p.m.—Press-Radio News Service.
- 7.35 p.m.—Alma Kitchell, contralto.
- 7.45 p.m.—Religion in the News.
- 8.00 p.m.—Thornton Fisher, sports.
- 8.15 p.m.—"Popeye the Sailor."
- 8.30 p.m.—Negro Male Chorus.
- 9.00 p.m.—Lucky Strike's Hit Parade.
- 10.00 p.m.—Rubinoff and His Violin.
- 10.30 p.m.—The Shell Chateau.
- 11.30 p.m.—D. West's Celebrity Night.
- 12.00 mid.—Dick Gasparre's Orchestra.
- 12.30 a.m.—Eso News Reporter.
- 12.35 a.m.—Chas. Dornberger's Orch.
- 1.00 a.m.—Eddie Duchin and His Orch.
- 1.30 a.m.—Leon Belasco and His Orch.

#### WABC—New York—860k.

- Columbia CBS chain—WCAU (Philadelphia), WGR (Buffalo), WNAC (Boston). See Log at top 2nd col.
- 3.00 p.m.—Al Roth's Syncopators.
- 3.30 p.m.—Girls' Vocal Trio.
- 3.45 p.m.—Concert Miniatures.
- 4.00 p.m.—Down by Herman's.
- 4.30 p.m.—Isle of Dreams.
- 5.00 p.m.—Motor City Melodies.
- 5.30 p.m.—Tours in Tone instrumental
- 6.00 p.m.—Meadowbrook Orchestra.
- 6.30 p.m.—Vincent Lopez's Orchestra.
- 7.00 p.m.—Fred. Wm. Wile, politics.
- 7.15 p.m.—News of Youth
- 7.30 p.m.—Press-Radio News Service.
- 7.35 p.m.—Al Roth with His Orch.
- 7.45 p.m.—Renfrew of the Mounted.
- 8.00 p.m.—"The Atlantic Family On Tour," songs, drama.
- 8.30 p.m.—Along Rialto Row.
- 9.00 p.m.—Ziegfeld Follies of the Air.
- 10.00 p.m.—Chesterfield Presents Orch.
- 10.30 p.m.—Col. Stoopnagle and Budd.
- 11.00 p.m.—California Melodies.
- 11.30 p.m.—K. of C. Track Meet.
- 12.00 mid.—Abe Lyman and His Orch.
- 12.30 a.m.—Ozzie Nelson's Orchestra.
- 1.00 a.m.—To be announced.
- 1.30 a.m.—Bernie Cummins' Orch.

## "Ziegfeld Follies of the Air"



JAMES MELTON and three decorative members of the current "Ziegfeld Follies of the Air" cast. Melton is one of the stars of the new "Ziegfeld Follies of the Air" series, presented over the nationwide WABC-Columbia network each Saturday, from 9.00 to 10.00 p.m., A.S.T. Fannie Brice, Al Goodman's Orchestra, and Patti Chapin also are headline features of the new radio series.



"THE STORE OF QUALITY"

## L. D. BROWN

270 Main St. 'Phone 3-2156

A Thoroughly Up-To-Date  
MEAT, GROCERY AND  
PROVISION MARKET

NEW STORE and  
NEW EQUIPMENT

## THE DUNLOP HOTEL

KING SQUARE, SAINT JOHN

Running Water in Every

Room—\$1.00

Dining Room Now in Operation

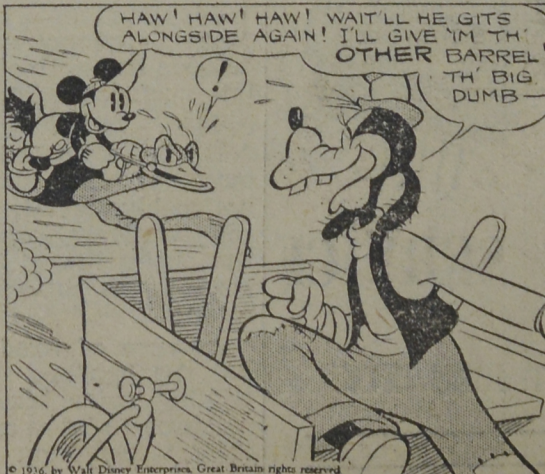
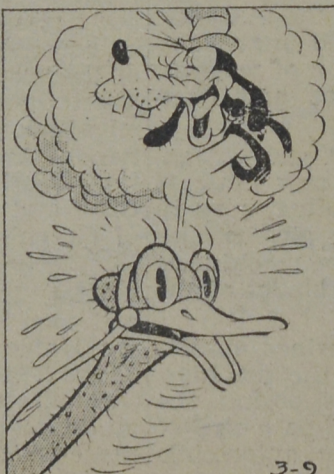
Convenient Garage or Parking

## MICKEY MOUSE

ONLY THREE CONTESTANTS LEFT

THE BATTLE ROYAL OF THE RACETRACK NEARLY OVER—

MICKEY STARTS TO PASS GOOFLY'S MANHANDLER AND—



## HOPPING MAD

By WALT DISNEY