

RADIO PROGRAMS

SATURDAY, May 2, 1936

THE TIME GIVEN IN ALL PROGRAMS IS ATLANTIC STANDARD TIME. "The Broadcaster" cannot be responsible for errors or omissions in the following programs or for the last-minute changes by stations or sponsors.

TODAY'S CANADIAN RADIO COMMISSION PROGRAM

- 6.00 p.m.—Closing Stock Quotations, on Montreal Markets.
- 6.15 p.m.—Varieties, from Toronto.
- 6.30 p.m.—Markowsky and His Dinner Music, from Ottawa.
- 7.00 p.m.—Presenting: Nellie Smith, contralto, from Toronto.
- 7.15 p.m.—Luigi Romanelli with His Dinner Music, Toronto.
- 7.30 p.m.—Captain Jack, sea stories for the children, Halifax.
- 7.45 p.m.—Romantic Piano Duo, from Montreal.
- 8.00 p.m.—Ben Bernie and His Orch., exchange from New York.
- 8.30 p.m.—Bert Anstice and His Mountain Boys, old-time music.
- 9.00 p.m.—Musical Merry-Go-Round in hits of the week, Toronto.
- 9.30 p.m.—Let's Go To The Music Hall, old-time music hall music.
- 10.00 p.m.—To be announced, Montreal.
- 10.30 p.m.—Don Bestor and His Orchestra, supper dinner music.
- 10.45 p.m.—Canadian Press News Bulletin and Weather Forecast.
- 11.00 p.m.—CRBC Time Signal.

CHSJ—Saint John—1120k.

- 6.00 a.m.—Weather Forecast.
- 7.45 a.m.—News, Weather, Music.
- 8.15 a.m.—"Thoughts For Today."
- 8.30 a.m.—Almanac of the Air.
- 8.45 a.m.—Musical Program.
- 9.45 a.m.—"Hour of Good Cheer."
- 11.30 a.m.—Concert Appreciation.
- 11.45 a.m.—Crazy Water Crystalizers.
- 12 noon.—Musical Program.
- 12.15 p.m.—Wassons' Musical Program.
- 12.45 p.m.—Ideal Stores' Musicales.
- 1.00 p.m.—Driscolls' Program.
- 1.15 p.m.—City Wet Wash Program.
- 1.30 p.m.—Rex Battle's Orch., Toronto.
- 4.45 p.m.—Jack and Jill.
- 5.00 p.m.—"On the Air."
- 5.05 p.m.—News, Musical Program.
- 5.30 p.m.—Popular Dance Music.
- 6.00 p.m.—Capitol Theatre News.
- 6.05 p.m.—to 12.00 mid.—CRBC Programs (See details top of 1st col.)
- 7.45 p.m.—Playlet.

CFNB—Fredericton—550k.

- 8.00 a.m.—Musical Clock.
- 8.30 a.m.—M. M. A. Talk.
- 8.35 a.m.—"The Listening Post."
- 9.00 a.m.—Birthday Party (Children's)
- 9.30 a.m.—Concert Songs.
- 10.15 p.m.—Thor Program.
- 10.45 a.m.—Enterprise Foundry Prog.
- 11.00 a.m.—Happy Warrior Hour.
- 12 noon.—Purina Program.
- 12.15 p.m.—Building Products' Program
- 12.30 p.m.—Sherwin-Williams' Musicales.
- 1.00 a.m.—Frigidaire Program.
- 1.30 p.m.—Royal York Concert Orch.
- 2.00 p.m.—Marconi Radio Hour.
- 4.30 p.m.—Tea Dance.
- 4.45 p.m.—Concert Hall of the Air.
- 5.00 p.m.—Monitor News Bulletins.
- 5.30 p.m.—All-Request Program.
- 6.00 p.m.—The Band Parade.
- 6.15 p.m.—Canada Cement Program.
- 6.30 p.m.—C.M. Program.
- 6.45 p.m.—MacDonald Program.
- 7.00 p.m.—Valley Motors' Program.
- 7.10 p.m.—News Bulletin.
- 7.15 p.m.—Souvenirs in Rhythm.
- 7.30 p.m.—CRBC Programs. (See details at top of 1st column)

CKCW—Moncton—1370k.

- 8.00 a.m.—Rise and Shine.
- 8.15 a.m.—Times' Newscast.
- 8.30 a.m.—Devotional Period.
- 8.45 a.m.—The Children's Hour.
- 9.00 a.m.—Sweet Music.
- 9.15 a.m.—to 9.30—Swinging Along.
- 12 noon.—Luncheon Dance.
- 12.15 p.m.—Transcript Newscast.
- 12.29 p.m.—Live Stock Reports.
- 12.30 p.m.—Betty Bee Hive.
- 12.45 p.m.—Music.
- 1.00 p.m.—The Variety Show.
- 1.30 p.m.—to 2.00—Waltz Time.
- 5.00 p.m.—Your Hit Parade.

LOG OF STATIONS

MARITIME PROVINCES—

- CHSJ—SAINT JOHN—1120k.
- CFNB—FREDERICTON—550k.
- CHNS—HALIFAX—930k.
- CJCB—SYDNEY—1240k.
- CFCY—CHARLOT'TOWN—630k.
- CHCK—CHARLOT'TOWN—1310k.
- CHGS—SUMMERSIDE—1450k.

UPPER CANADIAN—

- CFCF—MONTREAL—600k.
- CKAC—MONTREAL—730k.
- CRCM—MONTREAL—910k.
- CHNC—NEW CARLISLE—1210k.
- CFRB—TORONTO—690k.
- CRCT—TORONTO—840k.
- CKLW—WINDSOR—1030k.

UNITED STATES—

- WPG—ATLANTIC CITY—1100k.
- WBAL—BALTIMORE—1060k.
- WLBZ—BANGOR—620k.
- WBZ—BOSTON—990k.
- WEEL—BOSTON—590k.
- WNAC—BOSTON—1230k.
- WGR—BUFFALO—550k.
- WLW—CINCINNATI—700k.
- WTAM—CLEVELAND—1070k.
- WJR—DETROIT—750k.
- WTIC—HARTFORD—1060k.
- WOR—NEWARK—710k.
- WLWL—NEW YORK—1100k.
- WCAU—PHILADELPHIA—1170k.
- KDKA—PITTSBURGH—980k.
- WCSH—PORTLAND—940k.
- WGY—SCHENECTADY—840k.

- 6.00 p.m.—Hawaiian Shadows.
- 6.15 p.m.—The Barn Dance.
- 6.25 p.m.—Imperial News Flashes.
- 6.30 p.m.—Radio Commission Program
- 6.45 p.m.—Twilight Hour.
- 7.30 p.m.—to 12.00 mid.—Canadian Radio Commission Programs (See details top of 1st col.)

CHNS—Halifax—930k.

- 5.15 p.m.—Uncle Mel.
- 6.00 p.m.—Market Reports.
- 6.15 p.m.—Services.
- 6.40 p.m.—Horoscope.
- 6.45 p.m.—Services.
- 7.00 p.m.—Jerry Naugler and His Orch.
- 7.30 p.m.—to 12.00 mid.—Canadian Radio Commission Programs (See details top of 1st col.)

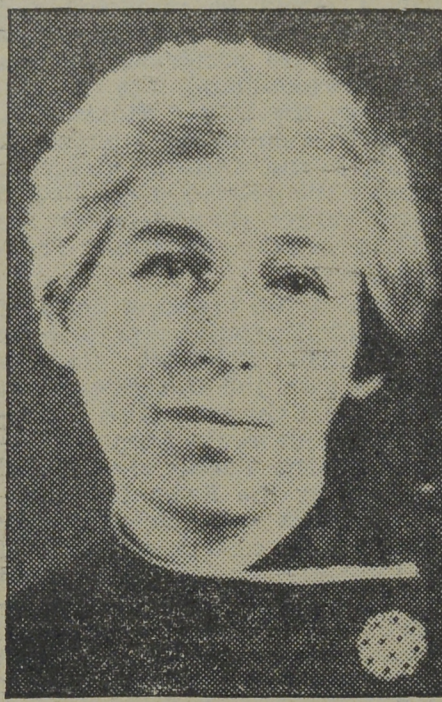
CKIC—Wolfville—1010k.

- 6.00 p.m.—Studio Program.
- 10.00 a.m.—Morning Devotional.
- 10.30 a.m.—Organ Studies.
- 11.00 a.m.—CJLS Half-Hour.
- 11.30 a.m.—Blanche Perry and Aileen Crowell.
- 12 noon.—Grand Hotel Program.
- 12.30 p.m.—News; Bait Reports.
- 12.45 p.m.—Fisherman's Broadcast.
- 1.00 p.m.—Weather.
- 5.30 p.m.—Uncle Bob and the Kiddies.
- 6.00 p.m.—"Down Melody Lane."
- 6.30 p.m.—Piano Moods (amateurs).
- 7.00 p.m.—Gateway Program.

CFCY—Charlottetown—630k.

- 11.00 a.m.—Enamel Heating Products.
- 11.15 a.m.—Women at Home Program.
- 12 noon.—Birks' Time.
- 12.01 p.m.—Prowse Bros., Ltd.
- 12.15 p.m.—Goodman Company.
- 12.30 p.m.—Official Weather Report.
- 12.31 p.m.—Woods Reade Stock Quotes
- 12.40 p.m.—The "Home Forum."
- 1.00 p.m.—Birks' Time.
- 1.01 p.m.—Half-Hour Luncheon Music

Aunt Mary



MRS. SIDNEY RAUH.

WLW's "Aunt Mary," has realized a life-long ambition to counsel mothers. She is heard over the 500,000-watt station, 10.15 a.m. A.S.T., on Thursdays and Saturdays in a program on child psychology.

- 4.30 p.m.—Tea-Time Music.
- 5.00 p.m.—Halifax Herald Outports.
- 6.00 p.m.—Birks' Time.
- 6.01 p.m.—International Fox Foods.
- 6.15 p.m.—"Memory Lane."
- 6.30 p.m.—Official Weather Report.
- 6.31 p.m.—Sleepy Town Express.
- 6.45 p.m.—Robin Hood and His Men.
- 7.00 p.m.—Birks' Time.
- 7.01 p.m.—Woods Reade Stock Quotes
- 7.15 p.m.—Building Products' Program
- 7.30 p.m.—to 12.00 mid.—CRBC Programs (See details top 1st. col.)

CHGS—Summerside—1500k.

- 7.30 a.m.—The Eye Opener.
- 8.30 a.m.—Time, Close Down.
- 10.00 a.m.—Morning Melodies.

CHURCH FURNITURE

We Manufacture All Kinds of CHURCH FURNITURE

ALTARS, with or without Reredos—COMMUNION TABLES and RAILS—CHANCEL PANELLING—PRAYER DESKS—LECTERNS—CHAIRS and PEWS.

LET US HAVE YOUR INQUIRIES

MURRAY & GREGORY, Limited

Phone 3-3242 LUMBER—GLASS—MILLWORK Saint John, N. B. BUILDERS' SUPPLIES

- 10.30 a.m.—Heart Songs.
- 10.45 a.m.—Home Hour.
- 11.25 a.m.—Rural Program.
- 12.25 p.m.—Time, Weather, etc.
- 12.30 p.m.—Guy Lombardo's Orch.
- 12.45 p.m.—Spanish Music.
- 1.00 p.m.—Midday Music.
- 2.30 p.m.—Time, Close Down.
- 4.00 p.m.—Afternoon Music.
- 4.30 p.m.—Martial Moments.
- 4.45 p.m.—Organ Melodies.
- 5.00 p.m.—Twilight Hour.
- 5.30 p.m.—Variety Program.
- 6.00 p.m.—Musical Merriment.
- 6.25 p.m.—Time, Announcements.
- 6.30 p.m.—Canadian Radio Com. Prog.
- 6.45 p.m.—Evening Melodies.
- 11.00 p.m.—Time, National Anthem.

WJZ—New York—760k.

- NBC BLUE Network—WGY (Schenectady), WEEL (Boston), WTAM (Cleveland). See Log top 2nd col
- 5.15 p.m.—Musical Adventures.
- 5.30 p.m.—Treasure Trails.
- 5.45 p.m.—News Review.
- 6.05 p.m.—Jesse C awford at the console; Paul Small, solos.
- 6.15 p.m.—Captain Tim's Adventures.
- 6.30 p.m.—Press-Radio News Service.

- 6.35 p.m.—Jamboree, variety program.
- 7.00 p.m.—King's Jesters, quartette.
- 7.15 p.m.—Home Town, drama.
- 7.30 p.m.—"Message of Israel," talk.
- 8.00 p.m.—Henri Deering, pianist.
- 8.15 p.m.—Boston Symphony Orchestra
- 9.15 p.m.—Armchair Quartette.
- 9.30 p.m.—National Barn Dance.
- 10.30 p.m.—To be announced.
- 11.15 p.m.—Emil Coleman's Orchestra.
- 11.30 p.m.—Glen Gray with His Orch.
- 12.00 mid.—Carefree Carnival.
- 12.30 a.m.—Griff Williams' Orchestra.

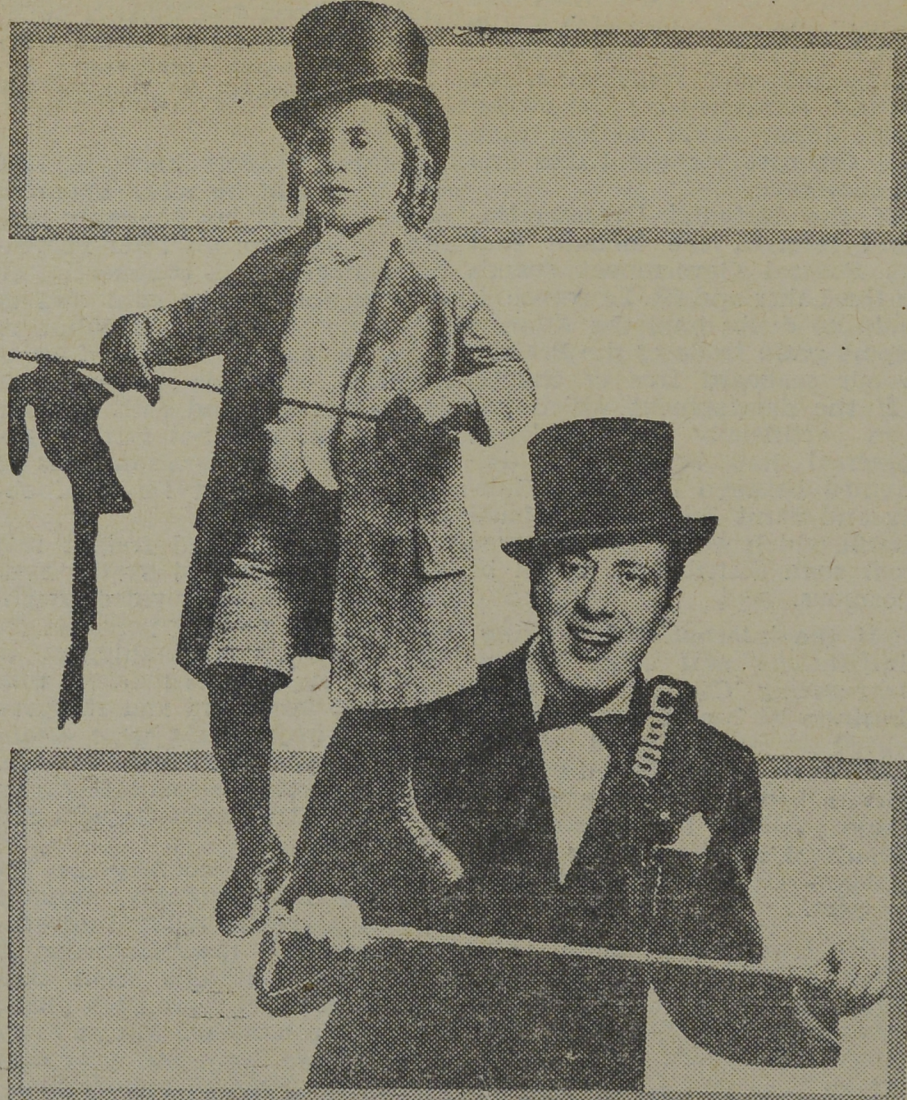
WEAF—New York—660k.

- NBC RED Network—WBAL (Baltimore), WBZ (Boston), WLW (Cincinnati), WTIC (Hartford), KDKA (Pittsburgh). See Log top 2nd col.
- 4.30 p.m.—Chick Webb and His Orch.
- 5.00 p.m.—Blue Room Echoes.
- 5.30 p.m.—Kaltenmeyer's Kindergarten.
- 6.00 p.m.—Otto Thurn's Orchestra.
- 6.30 p.m.—Press-Radio News Service.
- 6.35 p.m.—Alma Kitchell, contralto.
- 6.45 p.m.—Religion in the News.
- 7.00 p.m.—Thornton Fisher, sports.
- 7.15 p.m.—Edwin C. Hill, with news.
- 7.30 p.m.—Negro Male Chorus.
- 8.00 p.m.—To be announced.
- 9.00 p.m.—Frank Fay, comedian, with His Orchestra.
- 9.30 p.m.—The Shell Chateau.
- 10.30 p.m.—Dr. West's Celebrity Night.
- 11.00 p.m.—Clem McCarthy, sport shots
- 11.15 p.m.—Billy Loez and His Orch.
- 11.30 p.m.—Esso News Reporter.
- 11.35 p.m.—Chas. Dornberger's Orch.
- 12.00 mid.—Eddie Duchin and His Orch.
- 12.30 a.m.—Johnny Huntington's Orch.

WABC—New York—860k.

- Columbia CBS Chain—WCAU (Philadelphia), WGR (Buffalo), WNAC (Boston). See Log at top 2nd col.
- 3.00 p.m.—Down by Herman's.
- 3.30 p.m.—Tours in Tone.
- 4.00 p.m.—Motor City Melodies.
- 4.30 p.m.—Isle of Dreams.
- 5.00 p.m.—City College Glee Club.
- 5.15 p.m.—Boadhurst's Sea Stories.
- 5.30 p.m.—Frank Dailey's Orchestra.
- 6.00 p.m.—Fred. Wm. Wile, politics.
- 6.15 p.m.—News of Youth.
- 6.30 p.m.—Press-Radio News Service.
- 6.35 p.m.—Al Roth and His Orchestra.
- 6.45 p.m.—Gertrude Niesen, songs.
- 7.00 p.m.—Bruna Castagna, contralto, with Orchestra.
- 7.30 p.m.—"The Atlantic Family On Tour," songs and drama.
- 8.00 p.m.—Ziegfeld Follies of the Air.
- 9.00 p.m.—Bridgeport, Conn., Centennial Celebration.
- 9.30 p.m.—Col. Stoopnagle and Budd.
- 10.00 p.m.—"Your Hit Pa ade."
- 11.00 p.m.—Abe Lyman and His Orch.
- 11.30 p.m.—Henry King with His Orch.
- 12.00 mid.—Henry Halstead's Orchestra.
- 12.30 a.m.—Bernie Cummins' Orchestra

Man And Boy



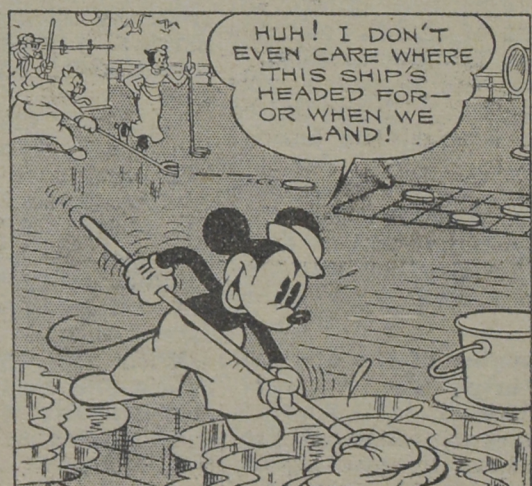
At the ripe age of five, BENNY FIELDS, the child wonder, strutted with his cane, top hat, white tie and tails (the latter of an early vintage). Today, the current sensation of radio and the toast of Broadway, Benny Fields, your Minstrel Man, still beats out those stirring rhythms in song with his cane, and a top hat still rests jauntily on his brow. Benny is heard every Saturday as co-star with Fannie Brice on the "Ziegfeld Follies of the Air" programs from 8.00 to 9.00 p.m., Atlantic Standard Time.

E. S. STEPHENSON & CO., LIMITED

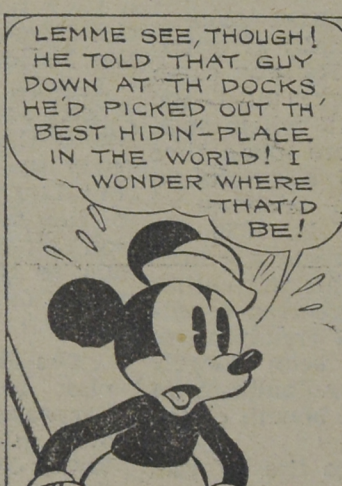
Nelson Street, Saint John, N. B. ENGINEERS MANUFACTURERS AGENTS SPECIALIZING IN MECHANICAL and ELECTRICAL EQUIPMENT

MICKEY MOUSE

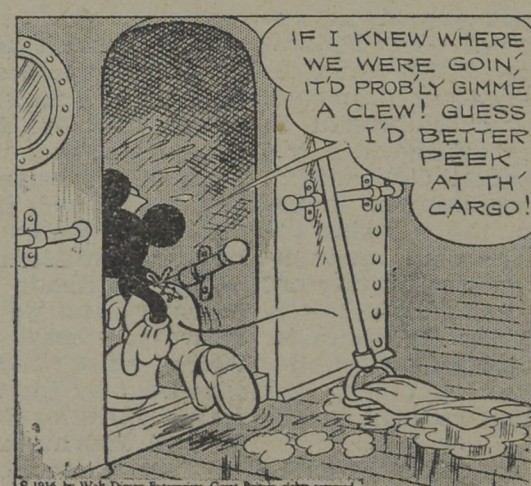
TOWAWAY MICKEY DOESN'T CARE WHAT KIND OF WORK HE HAS TO DO NOW THAT HE HAS DISCOVERED TRIGGER HAWKES IS A PASSENGER!



HUH! I DON'T EVEN CARE WHERE THIS SHIP'S HEADED FOR—OR WHEN WE LAND!



LEMME SEE, THOUGH! HE TOLD THAT GUY DOWN AT TH' DOCKS HE'D PICKED OUT TH' BEST HIDIN'-PLACE IN THE WORLD! I WONDER WHERE THAT'D BE!



IF I KNEW WHERE WE WERE GOIN', IT'D PROBABLY GIMME A CLEW! GUESS I'D BETTER PEEK AT TH' CARGO!



F' GOSH SAKES! AFRICA! SO THAT'S WHERE HE'S GONNA HIDE!

THE DARK CONTINENT

By WALT DISNEY