

RADIO PROGRAMS

MONDAY, May 4, 1936

THE TIME GIVEN IN ALL PROGRAMS IS ATLANTIC STANDARD
"The Broadcaster" cannot be responsible for errors or omissions in the following programs or for the last-minute changes by stations or sponsors.

TODAY'S CANADIAN RADIO COMMISSION PROGRAM

- 6.00 p.m.—Closing Stock Quotations, on Montreal Markets.
- 6.15 p.m.—Varieties, from Toronto.
- 6.30 p.m.—Dinner Music, Toronto.
- 7.00 p.m.—Presenting John Cook, baritone, from Montreal.
- 7.15 p.m.—Hotel de La Salle Cavaliers, novelty orch., Montreal.
- 7.30 p.m.—Stars of Tomorrow, juvenile artists, from Ottawa.
- 7.30 p.m.—Canadian Press News.
- 7.45 p.m.—Jimmy Namaro, xylophonist, novelty, from Toronto.
- 8.00 p.m.—Rhythm River, the novelty group, from Windsor.
- 8.30 p.m.—Music For Today, International exchange, New York
- 9.00 p.m.—Show Shop Songs, instrumental, vocal, Saint John.
- 9.30 p.m.—Tribute To A Song, drama.
- 10.00 p.m.—With Banners Flying, orch., and Imperial Grenadiers.
- 10.30 p.m.—Royal York Hotel Orchestra, dance music, Toronto.
- 10.45 p.m.—Canadian Press News Bulletin and Weather Forecast.
- 11.00 p.m.—CRBC Time Signal.
- 11.00 p.m.—Across the Border, dance music, from New York.
- 11.30 p.m.—"Lullaby Lagoon," slumber music, from Toronto.

CHSJ—Saint John—1120k.

- 6.00 a.m.—Weather Forecast.
- 7.45 a.m.—Recordings.
- 7.50 p.m.—Weather; News; Music.
- 8.15 a.m.—"Thoughts For Today."
- 8.30 a.m.—Almanac of the Air.
- 8.45 a.m.—Musical Program.
- 9.45 a.m.—"Hour of Good Cheer."
- 10.45 a.m.—Gastronox "Mentor."
- 11.00 a.m.—Community Dotings.
- 11.00 a.m.—Moods Musicales.
- 11.45 a.m.—Crazy Water Crystallizers.
- 12 noon.—Musical Program.
- 12.15 p.m.—Wassons' Musical Program.
- 12.30 p.m.—Ideal Stores' Ltd., music.
- 12.45 p.m.—Driscoll's Program.
- 1.00 p.m.—Weather; Recordings.
- 1.15 p.m.—Bustin's Fine Furniture.
- 1.30 p.m.—Rex Battle's Orch., Toronto.
- 2.00 p.m.—Fashion Parade by Christine.
- 2.15 p.m.—Music.
- 4.00 p.m.—"On the Air."
- 4.45 p.m.—Jack and Jill.
- 5.00 p.m.—News, Musical Program.
- 5.15 p.m.—Melodic Melodies.
- 6.00 p.m.—"Lucky," Emerson Bros.
- 6.10 p.m.—Capitol Theatre News.
- 6.15 p.m.—Musical Program.
- 6.45 p.m.—J. Marcus Ltd. Program.
- 7.00 p.m.—Real Life Drama.
- 7.15 p.m.—New System Program, "The Origin of Superstition."
- 7.30 p.m. to 12.00 mid.—CRO Programs

CFNB—Fredericton—550k.

- 8.00 a.m.—Musical Clock.
- 8.30 a.m.—M. M. A. Talk.
- 8.35 a.m.—"The Listening Post."
- 9.00 a.m.—Birthday Program.
- 9.30 a.m.—Concert Songs.
- 9.45 a.m.—Morning Concert.
- 10.15 a.m.—Thor Program.
- 10.45 a.m.—Enterprise Foundry Prog.
- 11.00 a.m.—Happy Warrior Hour.
- 12 noon.—Purina Program.
- 12.15 p.m.—Building Products' Prog.
- 12.30 p.m.—Canada Starch Melodies.
- 12.45 p.m.—Sherwin-Williams' Musicales.
- 1.00 p.m.—Frigidale Program.
- 1.30 p.m.—Rex Battle's Concert Orch.
- 2.00 p.m.—Marconi Radio Hour.
- 2.30 p.m.—Tango Serenade.
- 4.30 p.m.—Tea Dance.
- 4.45 p.m.—Burgess Battery Program.
- 5.00 p.m.—Monitor News Bulletins.
- 5.30 p.m.—Music Box Revue.
- 6.00 p.m.—Organ Reveries.
- 6.15 p.m.—Canada Cement Program.
- 6.30 p.m.—Strings.
- 6.45 p.m.—MacDonald Program.
- 7.00 p.m.—Valley Motors' Program.
- 7.05 p.m.—News Bulletins.
- 7.10 p.m.—Real Life Drama.
- 7.15 p.m.—Souvenirs in Rhythm.
- 7.30 p.m. to 12.00 mid.—CRO Programs

General Insurance including Ocean, Marine and Aeroplane.
PROVINCIAL INSURANCE AGENCY
89 Prince William Street, Saint John, N. B.

LOG OF STATIONS

MARITIME PROVINCES—

- CHSJ—SAINT JOHN—1120k.
- CFNB—FREDERICTON—550k.
- CKGW—MONCTON—1370k.
- CHNS—HALIFAX—930k.
- CJCB—SYDNEY—1240k.
- CFCY—CHARLOT'TOWN—630k.
- CHCK—CHARLOT'TOWN—1310k.
- CHGS—SUMMERSIDE—1450k.

UPPER CANADIAN—

- CFCF—MONTREAL—600k.
- CKAC—MONTREAL—730k.
- CRCM—MONTREAL—910k.
- CHNC—NEW CARLISLE—1210k.
- CFRB—TORONTO—690k.
- CRCT—TORONTO—840k.
- CKLW—WINDSOR—1030k.

UNITED STATES—

- WPG—ATLANTIC CITY—1100k.
- WBAL—BALTIMORE—1060k.
- WLBZ—BANGOR—620k.
- WBZ—BOSTON—990k.
- WEEI—BOSTON—590k.
- WNAC—BOSTON—1230k.
- WGR—BUFFALO—550k.
- WLW—CINCINNATI—700k.
- WTAM—CLEVELAND—1070k.
- WJR—DETROIT—750k.
- WTIC—HARTFORD—1060k.
- WOR—NEWARK—710k.
- WLWL—NEW YORK—1100k.
- WCAU—PHILADELPHIA—1170k.
- KDKA—PITTSBURGH—980k.
- WCSH—PORTLAND—940k.
- WGY—SCHENECTADY—840k.

CKCW—Moncton—1370k.

- 8.00 a.m.—Rise and Shine.
- 8.15 a.m.—Times' Newscast.
- 8.30 a.m.—Devotional Period.
- 8.45 a.m.—Morning Melodies.
- 9.00 a.m.—Out of the Past.
- 9.15 a.m. to 9.30—Swingin' Along.
- 12 noon.—Luncheon Dance.
- 12.15 p.m.—Transcript Newscast.
- 12.29 p.m.—Live Stock Reports.
- 12.30 p.m.—Betty Bee Hive.
- 12.45 p.m.—Instrumental Musicales.
- 1.00 p.m.—The Show Boat.
- 1.15 p.m.—Quarter-Hour of Song.
- 1.30 p.m. to 2.00—The Concert Hour.
- 5.00 p.m.—Your Hit Parade.
- 6.00 p.m.—Band Music.
- 6.15 p.m.—The Rhythm Club.
- 6.25 p.m.—Imperial News Flashes.
- 6.30 p.m.—Your Eyes.
- 6.45 p.m.—Evening Reveries.
- 7.00 p.m. to 12.00 mid.—CRO Programs See details top of 1st Col.

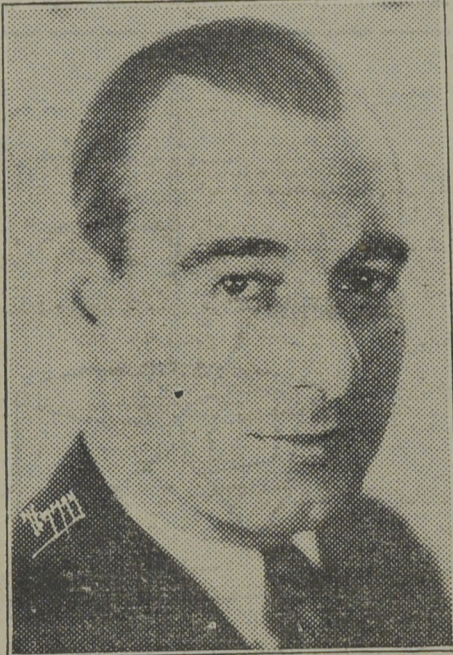
CHNS—Halifax—930k.

- 10.00 a.m.—Morning Devotions.
- 10.15 a.m.—Musical Program.
- 10.45 a.m.—News Review.
- 11.00 a.m.—Mrs. Dexter's Radio Hour.
- 12 noon.—Maritime Industrial Review.
- 12.15 p.m.—Matinee Industrial Review.
- 12.45 p.m.—News Bulletin.
- 1.00 p.m.—Time; Market Reports, etc.
- 1.15 p.m.—Oxydol's Own Ma Perkins.
- 5.30 p.m.—Uncle Mel.
- 6.00 p.m.—Time, Music; Services.
- 6.30 p.m.—News.
- 6.45 p.m.—Robin Hood's Merrie Men.
- 7.00 p.m.—George Sinclair's Orchestra.
- 7.25 p.m.—Real Life Dramas.
- 7.30 p.m. to 12.00 mid.—Canadian Radio Commission Programs (Details top of 1st. col.)

CJLS—Yarmouth—228.9

- 10.00 a.m.—Morning Devotional.
- 10.20 a.m.—Organ Studies.
- 10.45 a.m.—Woman's Forum.
- 11.30 a.m.—CJLS Program.

He's The Show



This is JIMMIE SCRIBNER, man of twenty-two voices who does all of the characters in "The Johnson Family" over 500,000-watt WLW at 6.00 p.m., A.S.T., daily except Saturday and Sunday. Paul Shivel, Negro poet of Dayton, Ohio, recently wrote Scribner: "None of the Negro impersonations that I ever heard could be compared with yours for versatility and ease of characterization. Your characters all stand out so distinctly as to seem living and actual persons whom one might expect some time to meet face to face if he should happen in on them any time at 6.00 p.m."

- 12 noon.—Grand Hotel Program.
- 12.30 p.m.—News; Balt Reports.
- 1.00 p.m.—Weather.
- 5.30 p.m.—Uncle Bob and the Kiddies.
- 6.00 p.m.—"Down Melody Lane."
- 6.15 p.m.—The Drifters.
- 6.30 p.m.—Robert Simpson Eastern Ltd
- 6.45 p.m.—"What Do You Think?"
- 7.00 p.m.—Gateway Program.

CKIC—Wolfville—1010k.

- 12 noon.—Studio Program.
- 6.00 p.m.—Studio Program.

CFCY—Charlottetown—630k.

- 11.00 a.m.—Enamel Heating Products.
- 11.15 a.m.—Women at Home Program.
- 12 noon.—Birks' Time.
- 12.01 p.m.—Peerless Program.
- 12.15 p.m.—Goodman Company.
- 12.30 p.m.—Official Weather Report.
- 12.31 p.m.—Woods Reade Stock Quotes
- 12.40 p.m.—The "Home Forum."
- 1.00 p.m.—Birks' Time.
- 1.01 p.m.—Half-Hour Luncheon Music
- 4.30 p.m.—Tea-Time Music.
- 5.00 p.m.—Halifax Herald Outports.
- 6.00 p.m.—Birks' Time.
- 6.01 p.m.—Davis & Lawrence.
- 6.15 p.m.—Bruce Stewart Co., Engines
- 6.30 p.m.—Official Weather Reprt.
- 6.31 p.m.—Sleepy Town Express.
- 6.45 p.m.—"Tip-Top Tailors' Program.
- 7.00 p.m.—Birks' Time.
- 7.01 p.m.—Woods Reade Stock Quotes
- 7.15 p.m.—Building Products' Program
- 7.25 p.m.—Ironized Yeast.
- 7.30 p.m. to 12.00 mid.—Canadian Radio Commission Programs (Details top of 1st. col.)

CHGS—Summerside—1500k.

- 7.30 a.m.—The Eye Opener.
- 8.30 a.m.—Time, Close Down.
- 10.00 a.m.—Morning Melodies.
- 10.30 a.m.—Home Hour.
- 11.25 a.m.—Rural Program.
- 12.10 p.m.—Waltz Memories.
- 12.25 p.m.—Time, Weather, etc.
- 12.30 p.m.—Dominion Tire Program.
- 12.45 p.m.—Troise and His Mandoliers.
- 1.00 p.m.—Midday Music.
- 2.30 p.m.—Time, Close Down.
- 4.00 p.m.—Afternoon Music.
- 4.30 p.m.—Piano Program.
- 4.45 p.m.—Organ Melodies.
- 5.00 p.m.—Twilight Hour.
- 5.30 p.m.—Variety Program.
- 6.00 p.m.—Musical Merriment.
- 6.25 p.m.—Time, Announcements.
- 6.30 p.m.—Evening Melodies.
- 6.45 p.m.—Canadian Radio Com. Progs See details top of 1st Col.
- 11.00 p.m.—Time, National Anthem.

WJZ—New York—760k.

- NBC BLUE Network—WGY (Schenectady), WEEI (Boston), WTAM (Cleveland). See Log top 2nd col.
- 1.15 p.m.—Dot and Will, drama.
- 1.30 p.m.—National Farm-Home Hour.
- 2.00 p.m.—Walter Blauf and His Orch.
- 2.30 p.m.—NBC Music Guild.
- 3.00 p.m.—Ray Hetherington, baritone.
- 3.15 p.m.—The Wise Man, soprano.
- 3.30 p.m.—Beatrice Mack, soprano.
- 3.45 p.m.—The King's Jesters.

Spent Energy

40% of your energy maintains sight—if your EYES are right. If your eyes are not right—as often occurs without the owner's knowledge—likely they use too much of your energy to maintain sight.

To feel right in your mind, have BOYANERS examine your eyes. If they need corrective Glasses, you'll enjoy living and working better than now. Telephone for an appointment.

BOYANER BROS., Limited

111 Charlotte Street (opposite Admiral Beatty Hotel)

- 4.00 p.m.—Betty and Bob, sketch.
- 4.15 p.m.—Backstage Wife.
- 4.30 p.m.—"How To Be Charming."
- 4.45 p.m.—The Magic Voice.
- 5.00 p.m.—"Let's Talk It Over," with Emily Post, columnist.
- 5.30 p.m.—The Singing Lady.
- 5.45 p.m.—Little Orphan Annie, drama.
- 6.00 p.m.—The Esso News Reporter.
- 6.05 p.m.—U. S. Army Band Concert.
- 6.30 p.m.—Press-Radio News Service.
- 6.35 p.m.—Three X Sisters, harmony.
- 6.45 p.m.—Lowell Thomas, news.
- 7.00 p.m.—To be announced.
- 7.15 p.m.—Arty Hall's Southern Rubes
- 7.30 p.m.—Lum and Abner, comedy.
- 7.45 p.m.—The Dream Singer.
- 8.00 p.m.—Fibber McGee and Molly.
- 8.30 p.m.—Evening in Paris.
- 9.00 p.m.—Sinclair's Greater Minstrels
- 9.30 p.m.—"A Tale of Today," serial drama with Joan Blaine.
- 10.00 p.m.—To be announced.
- 10.30 p.m.—Russ Morgan and His Orch.
- 11.00 p.m.—Esso News Reporter.
- 11.05 p.m.—Benny Goodman's Orchestra
- 11.15 p.m.—Ink Spots, Negro quartette.
- 11.30 p.m.—Glen Gray with His Orch.
- 12.00 mid.—Shandor, the violinist.
- 12.08 a.m.—Maison Russe Program.
- 12.30 a.m.—Phil Ohman and His Orch.

- 8.00 p.m.—Hammerstein's Mnsic Hall.
- 8.30 p.m.—"Voice of Experience," with Nelson Eddy, baritone.
- 9.00 p.m.—A & P Gypsies, music.
- 9.30 p.m.—The Swift Co. Program.
- 10.00 p.m.—Carnation Milk Program.
- 10.30 p.m.—National Radio Forum.
- 11.00 p.m.—Dick Mansfield's Orchestra.
- 11.30 p.m.—The Esso News Reporter.
- 11.35 p.m.—Magnolia Blossoms.
- 12.00 mid.—Phil Levant's Orchestra.
- 12.30 a.m.—Billy Lossez and His Orch.

WABC—New York—860k.

- Columbia CBS Chain—WCAU (Philadelphia), WGR (Buffalo), WNAC (Boston). See Log at top 2nd col.
- 12.45 p.m.—Five Star Jones.
- 1.00 p.m.—Matinee Melodies.
- 1.30 p.m.—Rhythmaires.
- 1.45 p.m.—Between the Book-Ends.
- 2.00 p.m.—Fred Skinner, songs.
- 2.15 p.m.—Happy Hollow, drama.
- 2.30 p.m.—Manhattan Matinee.
- 3.00 p.m.—Milton Charles, organist.
- 3.30 p.m.—Hoosier Hop.
- 4.00 p.m.—Concert Miniatures.
- 4.30 p.m.—Chicago Variety Hour.
- 5.00 p.m.—Jack Shannon, tenor.
- 5.15 p.m.—Wilderness Road, drama.
- 5.30 p.m.—Michigan Boulevardians.
- 5.45 p.m.—Vocals by Verrill.
- 6.00 p.m.—Buck Rogers in the 25th Century (fantastic).
- 6.15 p.m.—Bobby Benson, Sunny Jim.
- 6.30 p.m.—Press-Radio News Service.
- 6.35 p.m.—Milton Kellm's Orchestra.
- 6.45 p.m.—Renfrew of the Mounted.
- 7.00 p.m.—Four Barbers, with Ann Leaf at the console.
- 7.15 p.m.—Ted Husing and the Charlooteers.
- 7.30 p.m.—Ann Leaf at the Organ.
- 7.45 p.m.—Boake Carter, with news.
- 8.00 p.m.—Guy Lombardo's Orchestra.
- 8.30 p.m.—Pick and Pat, drama.
- 9.00 p.m.—Lux Radio Theatre.
- 10.00 p.m.—Wayne King with His Orch.
- 10.30 p.m.—The March of Time.
- 10.45 p.m.—"Public Opinion."
- 11.00 p.m.—Jack Denny and His Orch.
- 11.30 p.m.—Abe Lyman with His Orch.
- 12.00 mid.—Xavier Cugat's Orchestra.
- 12.30 a.m.—Henry Halstead's Orchestra.

Play Safe and Enjoy

the comfort and convenience of always having hot water supplied by a

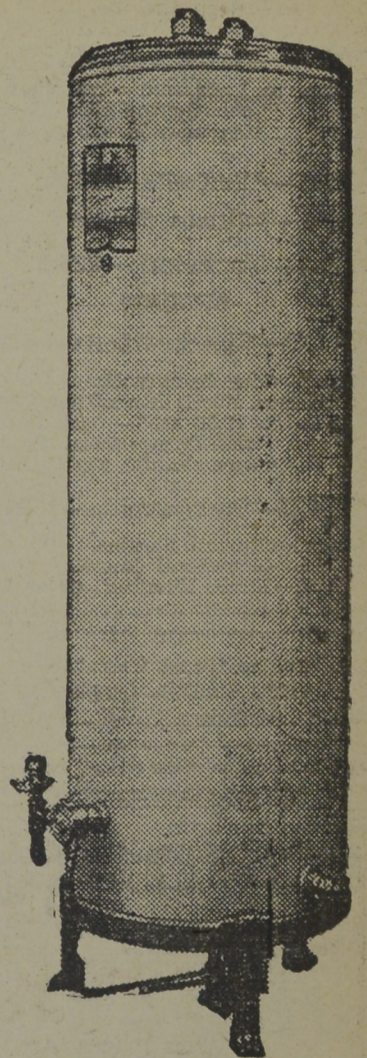
THRIFT

Automatic Gas Hot Water Heater

Absolutely no attention required. You may have at your convenience 50 to 85 gallons of Hot Water daily at a SPECIAL MONTHLY FLAT RATE.

This Heater is sold on convenient terms by

NEW BRUNSWICK POWER COMPANY
ASSURED SERVICE
SAINT JOHN, N. B.

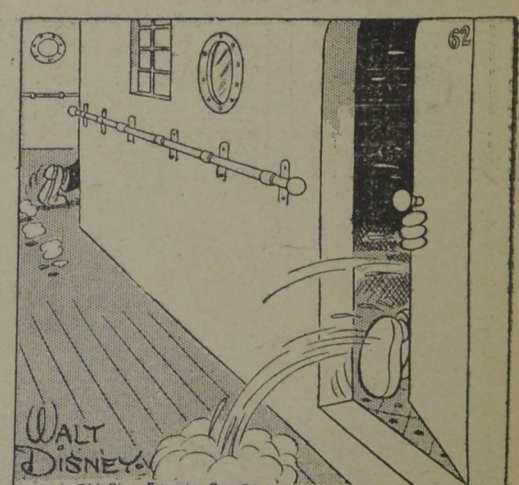
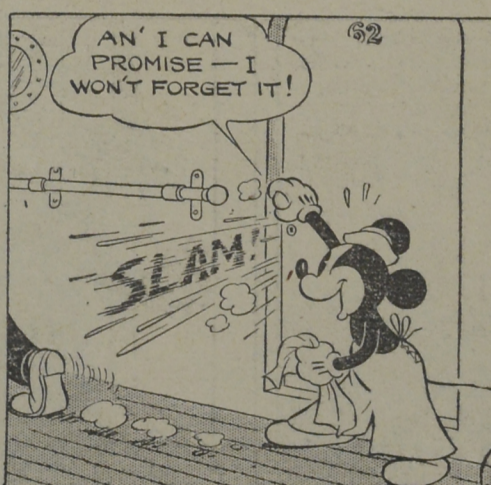


MICKEY MOUSE

ONE GOOD TURN DESERVES ANOTHER

By WALT DISNEY

WANTING TO SEARCH HAWKES' STATEROOM FOR THE STOLEN BLUEPRINTS AND HAVING NO KEY, MICKEY MUST GET IN BY TRICKERY! SO, AS HAWKES STARTS TO LEAVE—



© 1936, by Walt Disney Enterprises. Cross Britain rights reserved