

RADIO PROGRAMS

TUESDAY, May 5, 1936

THE TIME GIVEN IN ALL PROGRAMS IS ATLANTIC STANDARD
"The Broadcaster" cannot be responsible for errors or omissions in the following programs or for the last-minute changes by stations or sponsors.

TODAY'S CANADIAN RADIO COMMISSION PROGRAM

- 6.00 p.m.—Closing Stock Quotations, on Montreal Markets.
- 6.15 p.m.—Mid-Week Hymn Sing, mixed quartette and organ.
- 6.30 p.m.—Dinner Music, Montreal.
- 7.00 p.m.—Presenting: Pauline Wright, contralto, Windsor.
- 7.15 p.m.—Rex Battle and His Royal York Orch., dinner music.
- 7.30 p.m.—Musical Tours, with William Nixon, tenor, Ottawa.
- 7.30 p.m.—Canadian Press News.
- 7.45 p.m.—A Novelty Ensemble, from Montreal.
- 8.00 p.m.—Reve de Valse, orchestra under Lucio Agostini.
- 8.30 p.m.—Jazz Nocturne, International Exchange from New York
- 9.00 p.m.—Mystery House, a dramatic sketch, from Montreal.
- 9.30 p.m.—Twilight Echoes, Helen Morton, soprano, and William Morton, tenor.
- 10.00 p.m.—No Mournful Numbers.
- 10.30 p.m.—Louis Guenette with His Chateau Frontenac Orch.
- 10.45 p.m.—Canadian Press Bulletin and Weather Forecast.
- 11.00 p.m.—CRBC Time Signal.
- 11.01 p.m.—Luigi Romanelli with His Dance Orchestra, Toronto
- 11.30 p.m.—"Lullaby Lagoon," slumber music, from Montreal.

CHSJ—Saint John—1120k.

- 6.00 a.m.—Weather Forecast.
- 7.45 a.m.—Recordings.
- 7.50 p.m.—Weather; News; Music.
- 8.15 a.m.—"Thoughts For Today."
- 8.30 a.m.—Almanac of the Air.
- 8.45 a.m.—Musical Program.
- 9.45 a.m.—"Hour of Good Cheer."
- 10.45 a.m.—Gastronox "Mentor."
- 11.00 a.m.—Community Doings.
- 11.10 a.m.—Recordings.
- 11.30 a.m.—Moods Musicale.
- 11.45 a.m.—Crazy Water Crystalizers.
- 12 noon.—Musical Program.
- 12.15 p.m.—Wassons' Musical Program.
- 12.30 p.m.—Ideal Stores' Program.
- 12.45 p.m.—Driscolls' Program.
- 1.00 p.m.—Musical Program.
- 1.30 p.m.—Rex Battle's Orch., Toronto
- 2.00 p.m.—Fashion Parade by Christine
- 2.15 p.m.—Music.
- 4.00 p.m.—"On the Air."
- 5.00 p.m.—News Bulletin.
- 5.05 p.m.—Recordings.
- 5.15 p.m.—Melodic Melodies.
- 5.30 p.m.—Musical Program.
- 6.00 p.m.—"Lucky," Emerson Bros.
- 6.10 p.m.—Capitol Theatre News.
- 6.15 p.m.—Musical Program.
- 6.45 p.m.—Stock Market Reports, CRC.
- 7.00 p.m.—"True Confessions," Cystex.
- 7.15 p.m.—Robin Hood Mills Ltd.
- 7.30 p.m.—to 12.00 mid.—Canadian Radio Commission Programs
- 8.15 p.m.—Pacific Dairies Ltd. Prog. See details top of 1st col.

CFNB—Fredericton—550k.

- 8.00 a.m.—Musical Clock.
- 8.30 a.m.—M. M. A. Talk.
- 8.35 a.m.—"The Listening Post."
- 9.00 a.m.—Birthdays Program.
- 9.30 a.m.—Concert Songs.
- 9.45 a.m.—Morning Concert.
- 10.15 a.m.—Thor Program.
- 10.45 a.m.—Enterprise Foundry Prog.
- 11.00 a.m.—Happy Warrior Hour.
- 12 noon.—Purina Program.
- 12.15 p.m.—Building Products' Prog.
- 12.30 p.m.—Canada Star Melodies.
- 12.45 p.m.—Sherwin-Williams' Musicale.
- 1.00 p.m.—Frigidaire Program.
- 1.30 p.m.—Rex Battle's Concert Orch.
- 2.00 p.m.—Marconi Radio Hour.
- 4.30 p.m.—Tea Dance.
- 4.45 p.m.—Concert Hall of the Air.
- 5.00 p.m.—Monitor News Bulletins.
- 5.30 p.m.—Musical Comedy Memories.
- 6.00 p.m.—Fireside Hour.
- 6.15 p.m.—Canada Cement Program.
- 6.30 p.m.—C.C.M. Program.
- 6.45 p.m.—MacDonald Program.

LOG OF STATIONS

MARITIME PROVINCES—

- CHSJ—SAINT JOHN—1120k.
- CFNB—FREDERICTON—550k.
- CKGW—MONCTON—1370k.
- CHNS—HALIFAX—930k.
- CJCB—SYDNEY—1240k.
- CFCY—CHARLOTTOWN—630k.
- CHCK—CHARLOTTOWN—1310k.
- CHGS—SUMMERSIDE—1450k.

UPPER CANADIAN—

- CFCF—MONTREAL—600k.
- CKAC—MONTREAL—730k.
- CRCM—MONTREAL—910k.
- CHNC—NEW CARLISLE—1210k.
- CFRB—TORONTO—690k.
- CRCT—TORONTO—840k.
- CKLW—WINDSOR—1030k.

UNITED STATES—

- WPG—ATLANTIC CITY—1100k.
- WBAL—BALTIMORE—1060k.
- WLBZ—BANGOR—620k.
- WBZ—BOSTON—990k.
- WEET—BOSTON—590k.
- WNAC—BOSTON—1230k.
- WGR—BUFFALO—550k.
- WLW—CINCINNATI—700k.
- WTAM—CLEVELAND—1070k.
- WJR—DETROIT—750k.
- WTIC—HARTFORD—1060k.
- WOR—NEWARK—710k.
- WLWL—NEW YORK—1100k.
- WCAU—PHILADELPHIA—1170k.
- KDKA—PITTSBURGH—980k.
- WCSH—PORTLAND—940k.
- WGY—SCHENECTADY—840k.

7.00 p.m.—Valley Motors' Program.

- 7.10 p.m.—News Bulletins.
- 7.15 p.m.—Souvenirs in Rhythm.
- 7.17 p.m.—"Pop Donovan," sports.
- 7.30 p.m.—to 12.00 mid.—Canadian Radio Commission Programs See details top of 1st col.

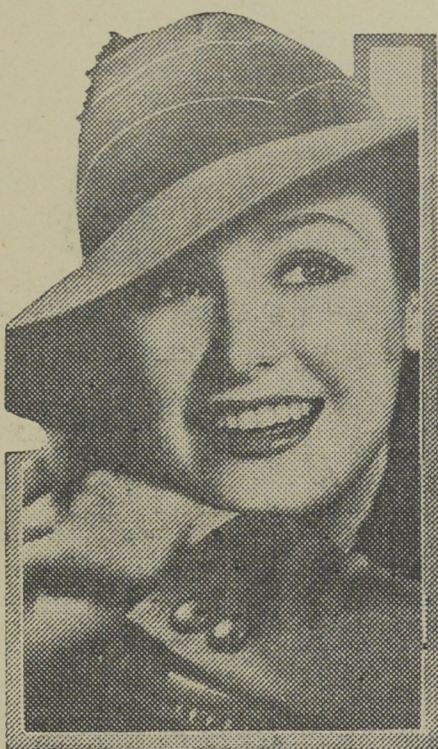
CKCW—Moncton—1370k.

- 8.00 a.m.—Rise and Shine.
- 8.15 a.m.—Times' Newscast.
- 8.30 a.m.—Devotional Period.
- 8.45 a.m.—Anniversary Hour.
- 9.00 a.m.—Sweet Music.
- 9.15 a.m.—to 9.30—Home Forum.
- 12 noon.—Luncheon Dance.
- 12.15 p.m.—Transcript Newscast.
- 12.29 p.m.—Live Stock Reports.
- 12.30 p.m.—Betty Bee Hive.
- 12.45 p.m.—To Milady.
- 12.50 p.m.—Don Sesta.
- 1.00 p.m.—The Variety Show.
- 1.30 p.m.—to 2.00—International Hour.
- 5.00 p.m.—Your Hit Parade.
- 6.00 p.m.—Hawaiian Shadows.
- 6.15 p.m.—Excerpts from the Operas.
- 6.25 p.m.—Imperial News Flashes.
- 6.30 p.m.—Atlantic Antics.
- 6.45 p.m.—Travelogue.
- 7.00 p.m.—to 12.00 mid.—CRC Programs See details top of 1st col.

CHNS—Halifax—930k.

- 10.00 a.m.—Morning Devotions.
- 10.15 a.m.—Musical Program.
- 10.30 a.m.—Morning Melodies.
- 10.45 a.m.—News Review.
- 11.00 a.m.—Mrs. Dexter's Radio Hour.
- 12 noon.—Syncoated Spots.
- 12.15 p.m.—Cousins' Spring Parade.
- 12.30 p.m.—Canada Star Melodies.
- 12.45 p.m.—News Bulletin.
- 1.00 p.m.—Time; Market Reports, etc.
- 1.15 p.m.—Oxydol's Own Ma Perkins.
- 5.30 p.m.—Uncle Mel.
- 6.00 p.m.—Time. Music; Services.
- 6.30 p.m.—News.
- 6.40 p.m.—Horoscope; Services.
- 6.45 p.m.—Salada Tea Organ Reveries.

A New Bonnet



ROSEMARY LANE,

lovely singing star of Fred Waring's Pennsylvanians, gives a preview of her new spring outfit. Her hat is a broad-brimmed dahlia felt with stitches in yellow and blue. A cluster of felt daisies in blue, white and yellow, is perched on the crown. This is worn with a severely tailored gray suit. Rosemary and the Pennsylvanians are heard over the WABC-Columbia network Tuesdays from 10.30 to 11.00 p.m., A.S.T.

7.30 p.m. to 12.00 mid.—Canadian Radio Commission Programs See details top 1st. col.

CFCY—Charlottetown—630k.

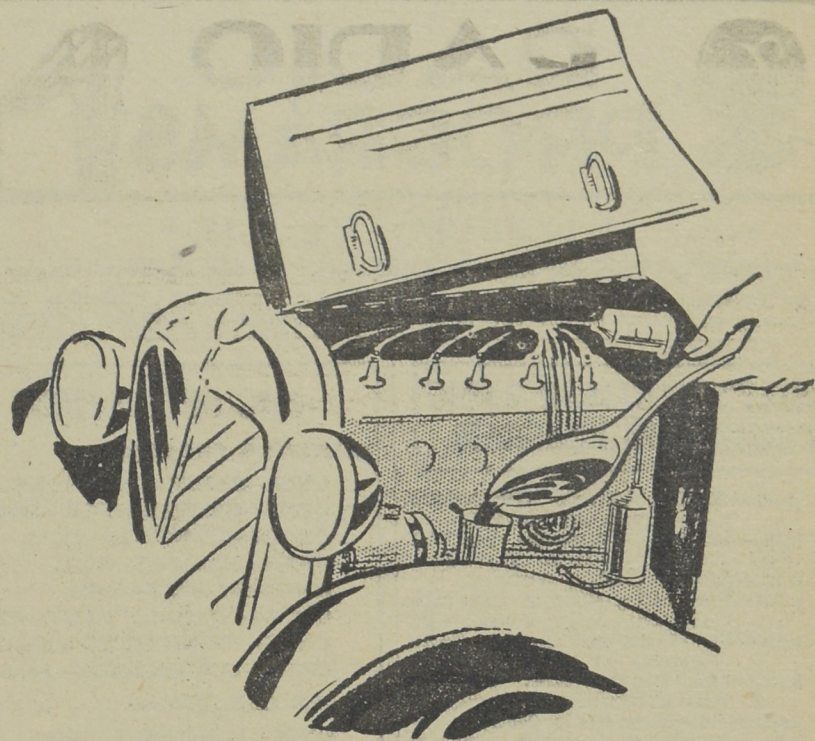
- 11.00 a.m.—Enamel Heating Products.
- 11.15 a.m.—Women at Home Program.
- 12 noon.—Birks' Time.
- 12.01 p.m.—Prowse Bros., Ltd.
- 12.15 p.m.—Goodman Company.
- 12.30 p.m.—Official Weather Report.
- 12.31 p.m.—Woods Reade Stock Quotes
- 12.40 p.m.—The "Home Forum."
- 1.00 p.m.—Birks' Time.
- 1.01 p.m.—Half-Hour Luncheon Music
- 4.30 p.m.—Tea-Time Music.
- 5.00 p.m.—Halifax Herald Outports.
- 6.00 p.m.—Birks' Time.
- 6.01 p.m.—International Fox Foods.
- 6.15 p.m.—"Memory Lane."
- 6.30 p.m.—Official Weather Reprt.
- 6.31 p.m.—Sleepy Town Express.
- 6.45 p.m.—Robin Hood and His Men.
- 7.01 p.m.—Woods Reade Stock Quotes
- 7.15 p.m.—Building Products' Program
- 7.30 p.m.—to 12.00 mid.—CRC Programs See details top of 1st Col.

CHGS—Summerside—1500k.

- 7.30 a.m.—The Eye Opener.
- 8.30 a.m.—Time, Close Down.
- 10.00 a.m.—Morning Melodies.
- 10.30 a.m.—Hear Songs.
- 10.35 a.m.—Home Hour.
- 11.25 a.m.—Rural Program.
- 12.10 p.m.—Bee Hive Program.
- 12.25 p.m.—Time, Weather, etc.
- 12.30 p.m.—Robert Naylor, tenor.
- 12.45 p.m.—Jay Wilbur and His Band.
- 1.00 p.m.—Midday Music.
- 2.00 p.m.—Time; Close Down.
- 4.00 p.m.—Afternoon Music.
- 4.30 p.m.—Martial Moments.
- 4.45 p.m.—Popular Songs.
- 5.00 p.m.—Twilight Hour.
- 5.30 p.m.—Variety Program.
- 6.00 p.m.—Musical Merriment.
- 6.10 p.m.—Beatty Washer Program.
- 6.25 p.m.—Time, Announcements.
- 6.30 p.m.—Exide Battery Program.
- 6.45 p.m.—Evening Melodies.
- 7.00 p.m.—Canadian Radio Com. Prog. See details top 1st. col.
- 11.00 p.m.—Time, National Anthem.

CJLS—Yarmouth—228.9

- 10.00 a.m.—Morning Devotional.
- 10.30 a.m.—Organ Studies.



Give Your Car A SPRING Tonic

Let us remove the last effect of Winter from your car. Your crank case in particular needs attention. We'll remove that sludge, flush it, and refill it; oil your transmission—in fact, service all the working parts. Bring in your car today. We'll fix it up for summer driving.

AVENUE SERVICE STATION

DOUGLAS AVENUE

- 11.00 a.m.—CJLS Half-Hour.
- 11.30 a.m.—Sustaining Program.
- 12 noon.—Grand Hotel Program.
- 12.30 p.m.—News; Bait Reports.
- 1.00 p.m.—Weather.
- 5.30 p.m.—Uncle Bob and the Kiddies.
- 6.00 p.m.—"Down Melody Lane."
- 6.15 p.m.—Twilight Hill-Billies.
- 6.30 p.m.—Max Hamilton.
- 7.00 p.m.—Gateway Program.

CKIC—Wolfville—1010k.

- 12 noon.—Studio Program.
- 6.00 p.m.—Studio Program.

WJZ—New York—760k.

- NBC BLUE Network—WGY (Schenectady), WEEL (Boston), WTAM (Cleveland). See Log top 2nd col.
- 4.30 p.m.—Songs and Stories.
- 4.45 p.m.—The Magic Voice.
- 5.00 p.m.—Meetin' House.
- 5.30 p.m.—The Singing Lady, nursery songs and stories.
- 5.45 p.m.—Little Orphan Annie, drama
- 6.00 p.m.—The Esso News Reporter.
- 6.05 p.m.—Minute Men.
- 6.15 p.m.—Animal Close-ups, stories.
- 6.30 p.m.—Press-Radio News Service.
- 6.35 p.m.—Frank and Flo, songs, etc.
- 6.45 p.m.—Lowell Thomas, news.
- 8.00 p.m.—"Easy Aces," sketch.
- 7.15 p.m.—Tony Russell, songs.
- 7.30 p.m.—Lum and Abner, comedy.
- 7.45 p.m.—To be announced.
- 8.00 p.m.—Epo Crime Clues, drama.
- 8.30 p.m.—Welcome Valley.
- 9.00 p.m.—Ben Bernie and His Orch.
- 9.30 p.m.—String Symphony.
- 10.30 p.m.—Elza Shalbert Reviews.
- 11.00 p.m.—The Esso News Reporter.
- 11.05 p.m.—Henry Busse and His Orch.
- 11.30 p.m.—Ruby Newman's Orchestra.
- 12.00 mid.—Shandor, the violinist.
- 12.08 a.m.—Jimmy Dorsey's Orchestra.
- 12.30 a.m.—George Olsen with His Orch.

WEAF—New York—660k.

- NBC RED Network—WBAL (Baltimore), WBZ (Boston), WLW (Cincinnati), WTIC (Hartford), KDKA (Pittsburgh). See Log top 2nd col.
- 5.30 p.m.—The Dansante.
- 6.00 p.m.—Flying Time, aviation.
- 6.15 p.m.—Mid-Week Hymn Sing.
- 6.30 p.m.—Press-Radio News Service.
- 6.35 p.m.—Baseball Resume.
- 6.45 p.m.—Billy and Betty.
- 7.00 p.m.—Amos n' Andy, comedy.
- 7.15 p.m.—Human Side of the News.
- 7.30 p.m.—Fred Hufsmith, tenor.
- 7.45 p.m.—You and Your Government.
- 8.00 p.m.—Leo Reisman with His Orch and Phil Dewey.
- 8.30 p.m.—Lady Esther Program.

- 9.00 p.m.—The Voice of the People.
- 9.30 p.m.—Nickelodeon (comedy, songs, and melodrama, with Sylvia Clark).
- 10.00 p.m.—Elgin Swing Time Revue.
- 10.30 p.m.—Royal Campbell's Royalists.
- 10.45 p.m.—Twin City Foursome.
- 11.00 p.m.—Clem McCarthy, sports shots
- 11.15 p.m.—Nano Rodrigo's Orchestra.
- 11.30 p.m.—Esso News Reporter.
- 11.35 p.m.—Ted Lewis with His Orch.
- 11.45 p.m.—Jesse Crawford, organist.
- 12.00 mid.—Phil Lewant with His Orch.
- 12.30 a.m.—Jesse Hawkin's Orchestra.

WABC—New York—860k.

- Columbia CBS Chain—WCAU (Philadelphia), WGR (Buffalo), WNAC (Boston). See Log at top 2nd col.
- 4.00 p.m.—Vivian Della Chiesa, songs.
- 4.30 p.m.—Columbia Chamber, Orch.
- 5.00 p.m.—Jimmy Farrell, baritone.
- 5.15 p.m.—Wilderness Road, drama.
- 5.30 p.m.—Manhattan Men and Maids
- 6.00 p.m.—Benay Venuta, songs.
- 6.15 p.m.—News of Youth.
- 6.30 p.m.—Press-Radio News Service.
- 6.35 p.m.—Alexander Cores, violinist.
- 6.45 p.m.—"Banjow of the Mounties."
- 7.00 p.m.—Maybelle Jennings, commentator.
- 7.15 p.m.—Krueger Musical Toast.
- 7.30 p.m.—Kate Smith and Her Guest Stars, with Orchestra.
- 7.45 p.m.—Boake aCrtter, with news.
- 8.00 p.m.—Lazy Dann, minstrel man.
- 8.30 p.m.—Laugh with Ken Murray.
- 9.00 p.m.—Camel Caravan, with Glen Gray and His Orchestra.
- 9.30 p.m.—Fred Waring's Pennsylvanians and Their Music.
- 10.00 p.m.—Parties at Pickfair, with Mary Pickford.
- 10.30 p.m.—"The March of Time."
- 10.45 p.m.—Willard Robison's Orchestra.
- 11.30 p.m.—Don Redman's Orchestra.
- 12.00 mid.—Frank Dalley and His Orch.
- 12.30 a.m.—Xavier Cugat's Orchestra.

Office, 3-3047. Res., 3-8584

ALBERT V. WEATHERHEAD
M.R.A.I.C.
Architect and Architectural Engineer

57 CHARLOTTE STREET
Saint John, N. B.

MEMBER:
Royal Architects' Inst. of Canada
Architects' Association of N. B.,
Assoc. of Profess. Engineers of N.E.

CARLSON'S AUTO PARTS
300 Union Street Saint John, N. B. Phone 3-6188
NEW PARTS and ACCESSORIES for All Makes of Cars and Trucks
—Our Prices Are the Lowest in the Maritimes—
WRITE US FOR CATALOGUE

JOHN W. GALEY
GENERAL MACHINIST
Gas and Crude Oil Engines Repaired
Automobile Machine Work—A Specialty
20 Smythe Street, Saint John, N. B.
Telephone 3-3634

MICKEY MOUSE THE MAN WHO CAME BACK By WALT DISNEY

BY GOLLY! HERE'S SOME PAPERS! ONLY—THEY DON'T LOOK MUCH LIKE BLUEPRINTS!

HIS CREDENTIALS FROM TH' SECRET SERVICE! WHY—HE—HE COULD BE ARRESTED FOR HAVIN' THESE! HE WAS DISCHARGED FROM TH' SERVICE!

ALL I'VE GOT T' DO NOW IS LOCATE TH' BLUEPRINTS—AN' I'VE GOT HIM RIGHT WHERE I—

WHAT ARE YOU DOING IN MY STATEROOM?

4-30