

RADIO PROGRAMS

SATURDAY, January 11, 1936

THE TIME GIVEN IN ALL PROGRAMS IS ATLANTIC STANDARD
 "The Broadcaster" cannot be responsible for errors or omissions in the following programs or for the last-minute changes by stations or sponsors.

TODAY'S CANADIAN RADIO COMMISSION PROGRAM

- 6.30 p.m.—Hotel Frontenac Orchestra.
- 6.45 p.m.—Closing Stock Quotations, Montreal Stock Exchange.
- 7.00 p.m.—Program from Overseas, by British Broadcasting Co.
- 7.30 p.m.—En Dinant, CRBC Dinner Hour Concert Music.
- 8.00 p.m.—Rex Battle and His Orch.
- 8.15 p.m.—Men of Melody, the Guardsmen, male octette.
- 8.30 p.m.—L'Improvisateur, piano recital, from Montreal.
- 8.45 p.m.—Book Review by Prof. J. F. Macdonald, Toronto.
- 9.00 p.m.—"Cotters' Saturday Night," Scotch program, Sydney.
- 9.30 p.m.—"Let's Go To Music Hall," old-time Music Hall program by George Young.
- 10.00 p.m.—N.H.L. Hockey: Toronto vs. Montreal Canadiens.
- 11.30 p.m.—Chas. Dornberger with His Mt. Royal Dance Orch.
- 11.45 p.m.—Canadian Press News Bulletin and Weather Forecast

CHSJ—Saint John—1120k.

- 6.00 a.m.—Weather Forecast.
- 7.45 a.m.—News: Weather, Music.
- 8.15 a.m.—"Thoughts For Today."
- 8.30 a.m.—Musical Program.
- 10.00 a.m.—"Hour of Good Cheer."
- 11.30 a.m.—Moods Musicale.
- 12 noon—Musical Program.
- 12.15 p.m.—Wassons' Musical Program.
- 12.45 p.m.—Ideal Stores' Musicale.
- 1.00 p.m.—Driscolls' Program.
- 1.15 p.m.—City Wet Wash Program.
- 2.30 p.m.—Rex Battle's Orch., Toronto
- 5.00 p.m.—"On the Air."
- 5.05 p.m.—News: Musical Program.
- 5.30 p.m.—Musical Program.
- 6.00 p.m.—Capitol Theatre News.
- 6.05 p.m. to 12.00 mid.—CRC Programs
- 10.00 p.m.—N.H.L. Hockey Game.

CKCW—Moncton—1370k.

- 8.00 a.m.—Musical Program.
- 8.10 a.m.—News Items.
- 8.30 a.m.—Devotional Period.
- 8.45 a.m.—Organ Melodies.
- 9.00 a.m.—Popular Music Half-Hour.
- 12 noon—Musical Program.
- 12.15 p.m.—Jack Grainger.
- 12.30 p.m.—Popular Music.
- 1.00 p.m.—Noon-Day Musicale.
- 5.00 p.m.—Musical Program.
- 6.00 p.m.—Concert Hour.
- 7.00 p.m.—Popular Music.
- 7.30 p.m. to 12.00 mid.—CRC Programs

CFNB—Fredericton—550k.

- 8.00 a.m.—Musical Clock.
- 8.30 a.m.—M. M. A. Talk.
- 8.35 a.m.—"The Listening Post."
- 9.00 a.m.—Birthday Party (Children's)
- 9.30 p.m.—Maytag Melodies.
- 10.00 a.m.—Concert Period.
- 10.15 a.m.—Studies in Black and White
- 10.30 a.m.—Strings.
- 10.45 a.m.—Enterprise Foundry Prog.
- 11.00 a.m.—Happy Warrior Hour.
- 12 noon—Purina Program.
- 12.15 p.m.—Building Products' Prog.
- 12.30 p.m.—Sherwin-Williams Musicale.
- 1.00 a.m.—Frigidaire Program.
- 1.30 p.m.—Marconi Radio Hour.
- 2.30 p.m.—Royal York Orch., Toronto.
- 4.30 p.m.—All Request Program.

LOG OF STATIONS

MARITIME PROVINCES—

- CHSJ—SAINT JOHN—1120k.
- CFNB—FREDERICTON—550k.
- CHNS—HALIFAX—930k.
- CJCB—SYDNEY—1240k.
- CFCY—CHARLOTTOWN—630k.
- CHCK—CHARLOTTOWN—1310k.
- CHGS—SUMMERSIDE—1450k.

UPPER CANADIAN—

- CFCF—MONTREAL—600k.
- CKAC—MONTREAL—730k.
- CRCM—MONTREAL—910k.
- CHNC—NEW CARLISLE—1210k.
- CFRB—TORONTO—690k.
- CRCR—TORONTO—840k.
- CKLW—WINDSOR—1030k.

UNITED STATES—

- WPG—ATLANTIC CITY—1100k.
- WBAL—BALTIMORE—1060k.
- WLBZ—BANGOR—620k.
- WBZ—BOSTON—990k.
- WEEL—BOSTON—590k.
- WNAC—BOSTON—1230k.
- WGR—BUFFALO—550k.
- WLW—CINCINNATI—700k.
- WTAM—CLEVELAND—1070k.
- WJR—DETROIT—750k.
- WTIC—HARTFORD—1060k.
- WOR—NEWARK—710k.
- WLWL—NEW YORK—1100k.
- WCAU—PHILADELPHIA—1170k.
- KDKA—PITTSBURGH—980k.
- WCSH—PORTLAND—940k.
- WGY—SCHENECTADY—840k.

- 5.00 p.m.—Monitor News Bulletins.
- 5.30 p.m.—Canadian Legion B. E. S. L.
- 5.45 p.m.—Campbell Axe Program.
- 6.00 p.m.—Band Concert.
- 6.15 p.m.—Canada Cement Program.
- 6.30 p.m.—Burgess Battery Program.
- 6.45 p.m.—MacDonald Program.
- 7.00 p.m.—News Bulletins.
- 7.15 p.m.—Souvenirs in Rhythm.
- 7.30 p.m.—CRC Programs. (See details at top of 1st column)
- 10.00 p.m.—N.H.L. Hockey Broadcast.

CHNS—Halifax—930k.

- 5.15 p.m.—Uncle Mel.
- 6.00 p.m.—Time, Music; Services.
- 6.30 p.m.—Horoscope; Services.

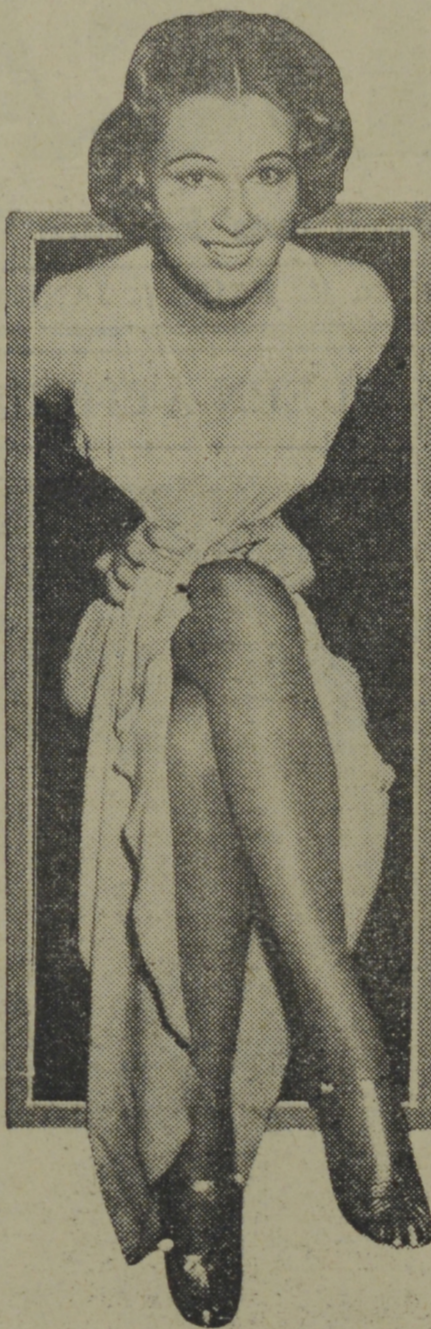
Clever Actress



EILEEN PALMER,

pretty radio actress, is winning new popularity since joining the dramatic staff of 500,000-watt WLW at Cincinnati. She hails from the west coast and is an ex-newspaper woman.

"Honey Chile"



Yes, she's HONEY CHILE herself, as the camera caught her backstage at a CBS radio playhouse, bemoaning another run in her stocking. She is the dainty miss whose soft southern voice and delightful repartee with Bob Hope make the comedy team a highlight of the Atlantic Family programs featuring the songs of Frank Parker over the WABC-Columbia network every Saturday evening at 8.00 o'clock, A.S.T.

- 6.45 p.m.—Market Reports.
- 7.00 p.m.—Amos Thibeau, fiddler.
- 7.30 p.m. to 12.00 mid.—CRC Programs

COSMAN, "THE SIGN MAN"

269 Union Street :: Saint John, N. B.

CKIC—Wolfville—1010k.

- 6.00 p.m.—Studio Program.

CFCY—Charlottetown—630k.

- 12 noon—Peerless Program.
- 12.25 p.m.—Prowse Bros. Ltd. Program
- 12.30 p.m.—Bike Shop Weather Report.
- 12.31 p.m.—Stock Quotations.
- 12.40 p.m.—Home Forum Program.
- 1.00 p.m.—Luncheon Program.
- 5.00 p.m.—Outports Program.
- 5.30 p.m.—Moore & McLeod Program.
- 6.00 p.m.—Jack Cameron.
- 6.15 p.m.—Henderson and Cudmore.
- 6.30 p.m.—Sleepy Town Express.
- 6.45 p.m.—Merchants' Program.
- 7.00 p.m.—Stock Quotations.
- 7.15 p.m.—Kelly & McInnis.
- 7.30 p.m. to 12.00 mid.—CRC Programs

WJZ—New York—760k.

- NEC RED Network—WBAL (Baltimore), WBZ (Boston), WLW (Cincinnati), WTIC (Hartford), KDKA (Pittsburgh). See Log top 2nd col.
- 6.00 p.m.—Musical Adventures.
- 6.15 p.m.—Jackie Heller, tenor.
- 6.30 p.m.—Dog Dramas.
- 6.45 p.m.—Week-End News Review.
- 7.05 p.m.—To be announced.
- 7.30 p.m.—Press-Radio News Service.

PURELLO Flavoring Extracts

"Make Good Cooking BETTER"

H. W. WILSON CO., LTD.

23-27 Water Street
 SAINT JOHN, N. B.



- 7.35 p.m.—Morin Sisters, harmony.
- 7.45 p.m.—Jamboree, variety program.
- 8.15 p.m.—Master Builder Program and a guest speaker.
- 8.30 p.m.—"Message of Israel," talk.
- 9.00 p.m.—El Chico, Spanish revue.
- 9.15 p.m.—To be announced.
- 10.15 p.m.—Russian Symphonic Choir.
- 10.30 p.m.—National Barn Dance.
- 11.30 p.m.—To be announced.
- 12.00 mid.—Eso News Reporter.
- 12.05 a.m.—Howard Lally's Orchestra.
- 12.30 a.m.—Ray Noble with His Orch.
- 1.00 a.m.—Carefree Carnival.
- 1.30 a.m.—Eddie Duchin and His Orch.

WEAF—New York—660k.

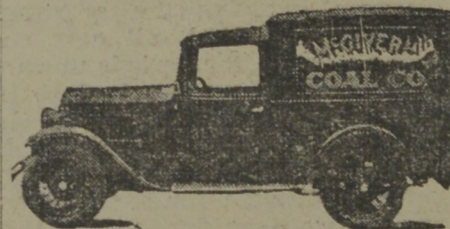
- NBC BLUE Network—WGY (Schenectady), WEEI (Boston), WTAM (Cleveland). See Log top 2nd col.
- 6.30 p.m.—Kaltenmeyer's Kindergarten
- 7.02 p.m.—Pinky Hunter and His Orch.
- 7.30 p.m.—Press-Radio News Service.
- 7.35 p.m.—Alma Kitchell, contralto.
- 7.45 p.m.—Religion in the News.
- 8.00 p.m.—To be announced.
- 8.15 p.m.—"Popeye the Sailor."
- 8.30 p.m.—Human Side of the News.
- 8.45 p.m.—Negro Male Chorus.
- 9.00 p.m.—Lucky Strike's Hit Parade.
- 10.00 p.m.—Rubinoff and His Violin.
- 10.30 p.m.—The Shell Chateau.
- 11.30 p.m.—Corn Cob Pipe Club, music.
- 12.00 mid.—Dick Gasparre's Orchestra.
- 12.30 a.m.—Eso News Reporter.
- 12.35 a.m.—Ben Bernie with His Orch.
- 1.00 a.m.—Freddy Martin's Orchestra.
- 1.30 a.m.—Harold Stern and His Orch.

WABC—New York—860k.

- Columbia CBS chain—WCAU (Philadelphia), WGR (Buffalo), WNAC (Boston). See Log at top 2nd col.
- 5.00 p.m.—Motor City Melodies.
- 5.30 p.m.—Chansonette, salon music.
- 6.00 p.m.—Frank Dalley and His Orch.
- 6.30 p.m.—Vincent Lopez's Orchestra.
- 7.00 p.m.—Fred. Wm. Wile, politics.
- 7.15 p.m.—Parade of Youth.
- 7.30 p.m.—Press-Radio News Service.
- 7.35 p.m.—Three Little Girls, vocal.
- 7.45 p.m.—Gogo De Lys, songs.
- 8.00 p.m.—"The Atlantic Family On Tour," songs, drama.
- 8.30 p.m.—Carborundum Band.
- 9.00 p.m.—Cluquot Club Eskimos.
- 9.30 p.m.—Kreuger Musical Toast.
- 10.00 p.m.—Chesterfield Presents Orch.
- 10.30 p.m.—Along Rialto Row.
- 11.00 p.m.—California Melodies.

EDWARD WALSH

78 Germain Street, Saint John, N. B.
 High-Grade CUSTOM-MADE
 BOOTS and SHOES
 REPAIRING A SPECIALTY
 Established 40 Years at the Same Stand



Phone 3-2044

Corner Elm Street and Lansdowne Ave



"THE STORE OF QUALITY"

L. D. BROWN

270 Main St. Phone 3-2156

A Thoroughly Up-To-Date
 MEAT, GROCERY AND
 PROVISION MARKET

NEW STORE and
 NEW EQUIPMENT

In Stock Best Quality of
 Scotch Soft Coal
 in the City—

\$10.00 cash per ton,
 put in the bin. Dry
 Hard and Soft Wood

GEO. DICK

48 Britain St., Phone 3-3816

THE DUNLOP HOTEL
 KING SQUARE, SAINT JOHN
 Running Water in Every
 Room—\$1.00

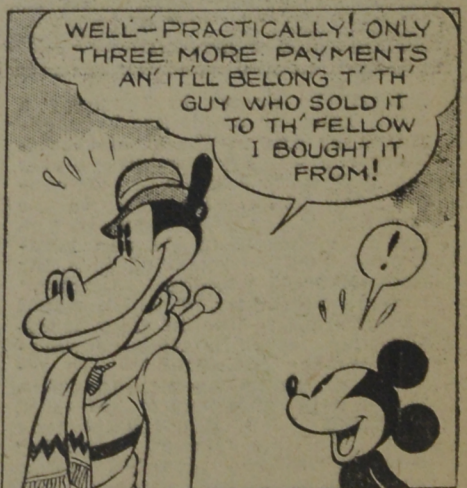
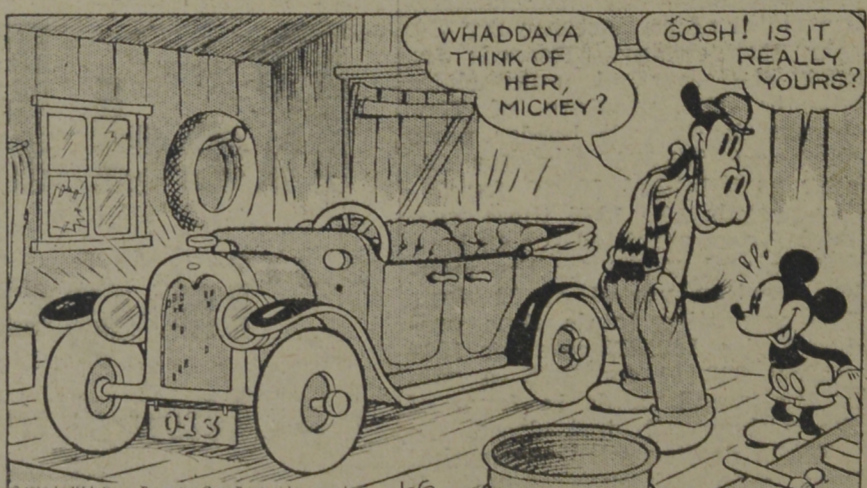
Dining Room Now in Operation
 Convenient Garage or Parking

BUILD SAFELY
 DUNTILE
 EASTERN CEMENT PRODUCTS
 111 Princess St. Saint John N.B.

"Aladdin" Lamps
 Make the Home Bright, Cheerful
 All Models and Supplies at
P. CAMPBELL & CO.
 MARITIME DISTRIBUTORS
 71 Prince Wm. St., Saint John

JAS. McALLISTER & SONS Dyeing : Scouring : Dry Cleaning : Phone 3-2911
 GILBERT'S LANE DYE WORKS AT SHORTEST NOTICE AT LOWEST RATES
 —LACE CURTAINS A SPECIALTY—

MICKEY MOUSE



AUTO-INTOXICATION!

By WALT DISNEY