

# RADIO PROGRAMS

MONDAY, January 13, 1936

THE TIME GIVEN IN ALL PROGRAMS IS ATLANTIC STANDARD  
 "The Broadcaster" cannot be responsible for errors or omissions in the following programs or for the last-minute changes by stations or sponsors.

## TODAY'S CANADIAN RADIO COMMISSION PROGRAM

- 7.00 p.m.—Overseas Program, BBC re-broadcast, from Ottawa.
- 7.30 p.m.—Canadian Press News.
- 7.35 p.m.—Sunset Silhouettes with the Garnet Trowell Ensemble
- 8.00 p.m.—Rex Battle with His Orch., from Toronto.
- 8.15 p.m.—Presenting: Lila Valiant, soprano.
- 8.30 p.m.—Young Tim, children's serial direction of Edgar Stone.
- 8.45 p.m.—"A Quarter To Eight," variety show, from Windsor.
- 9.00 p.m.—Show Shop Songs, instrumental and vocal ensemble, from Saint John.
- 9.30 p.m.—Ben Kyte's Varieties, an exchange from Detroit, U.S.
- 10.00 p.m.—C'est Rendezvous, modern vocal ensemble and Orch.
- 10.30 p.m.—Melodic Strings.
- 11.00 p.m.—The Youngbloods of Beaver Bend, rural sketch.
- 11.30 p.m.—Billy Bisset and His Orch., with dance music.
- 11.45 p.m.—Canadian Press News Bulletin and Weather Forecast

### CHSJ—Saint John—1120k.

- 6.00 a.m.—Weather Forecast.
- 7.45 a.m.—Recordings.
- 7.50 p.m.—Weather; News; Music.
- 8.15 a.m.—"Thoughts For Today."
- 8.30 a.m.—Musical Program.
- 10.00 a.m.—"Hour of Good Cheer."
- 11.00 a.m.—Community Doings.
- 11.30 a.m.—Moods Musicales.
- 12 noon—Musical Program.
- 12.15 p.m.—Wassons' Musical Program.
- 12.30 p.m.—Ideal Stores' Ltd., music.
- 12.45 p.m.—Driscoll's Program.
- 1.00 p.m.—Weather; Recordings.
- 1.15 p.m.—Bustin's Fine Furniture.
- 2.00 p.m.—Rex Battle's Orch., Toronto
- 5.00 p.m.—"On the Air."
- 5.05 p.m.—News; Musical Program.
- 5.30 p.m.—Recordings.
- 6.00 p.m.—"Lucky," Emerson Bros.
- 6.10 p.m.—Capitol Theatre News.
- 6.15 p.m.—Musical Program.
- 6.45 p.m.—J. Marcus "Nemises Inc."
- 6.30 p.m.—Recordings.
- 7.00 p.m.—Tuberculosis Talk.
- 7.20 p.m.—Musical Program.
- 7.30 p.m. to 12.00 mid.—CRC Programs (Details top of 1st. col.)
- 9.00 p.m.—Show Shop Songs to CRC.


### CFNB—Fredericton—550k.

- 8.00 a.m.—Musical Clock.
- 8.30 a.m.—M. M. A. Talk.
- 8.35 a.m.—"The Listening Post."
- 9.00 a.m.—Birthday Program.
- 9.15 a.m.—Novelty Program.
- 9.30 a.m.—Maytag Melodies.
- 10.00 a.m.—Concert Period.
- 10.15 a.m.—Tangoes.
- 10.30 a.m.—Piano and Violin.
- 10.45 a.m.—Enterprise Foundry Prog.
- 11.00 a.m.—Happy Warrior Hour.
- 12 noon—Purina Program.
- 12.15 p.m.—Frigidaire Program.
- 12.45 p.m.—Building Products' Prog.
- 1.00 p.m.—Sherwin-Williams Musicales.
- 1.30 p.m.—Marconi Radio Hour.
- 2.30 p.m.—Strings and Vocalist.
- 4.30 p.m.—Music Box Revue.
- 5.00 p.m.—Monitor News Bulletins.
- 5.30 p.m.—Dance Music.
- 5.45 p.m.—Concert Songs.
- 6.00 p.m.—Dinner Music.
- 6.15 p.m.—Canada Cement Program.
- 6.30 p.m.—Burgess Battery Program.
- 6.45 p.m.—MacDonald Program.
- 7.00 p.m.—News Bulletins.
- 7.15 p.m.—Weed Chain Program.
- 7.30 p.m. to 12.00 mid.—Canadian Radio Commission Programs

### CKCW—Moncton—1370k.

- 8.00 a.m.—Musical Program.
- 8.15 a.m.—News.

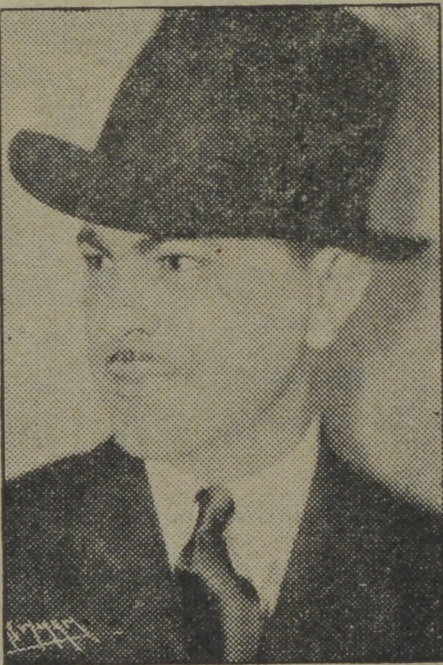
**CAN'T SLEEP?**  
 IT'S YOUR NERVES  
 Relief comes soon with use of  
**DR. CHASE'S NERVE FOOD**



## LOG OF STATIONS

- MARITIME PROVINCES—  
 CHSJ—SAINT JOHN—1120k.  
 CFNB—FREDERICTON—550k.  
 CKGW—MONCTON—1370k.  
 CHNS—HALIFAX—930k.  
 CJCB—SYDNEY—1240k.  
 CFCY—CHARLOT'TOWN—630k.  
 CHCK—CHARLOT'TOWN—1310k.  
 CHGS—SUMMERSIDE—1450k.
- UPPER CANADIAN—  
 CFCF—MONTREAL—600k.  
 CKAC—MONTREAL—730k.  
 CRCM—MONTREAL—910k.  
 CHNC—NEW CARLISLE—1210k.  
 CFRB—TORONTO—690k.  
 CRCT—TORONTO—840k.  
 CKLW—WINDSOR—1030k.
- UNITED STATES—  
 WPG—ATLANTIC CITY—1100k.  
 WBAL—BALTIMORE—1060k.  
 WLBZ—BANGOR—620k.  
 WBZ—BOSTON—990k.  
 WEEL—BOSTON—590k.  
 WNAK—BOSTON—1230k.  
 WGR—BUFFALO—550k.  
 WLW—CINCINNATI—700k.  
 WTAM—CLEVELAND—1070k.  
 WJR—DETROIT—750k.  
 WTIC—HARTFORD—1060k.  
 WOR—NEWARK—710k.  
 WLWL—NEW YORK—1100k.  
 WCAU—PHILADELPHIA—1170k.  
 KDKA—PITTSBURGH—980k.  
 WOSH—PORTLAND—940k.  
 WGY—SCHENECTADY—840k.

## New Orchestra



The distinctive, individualistic music of CLYDE TRASK and his new WLW Orchestra is now being heard by the radio audience through WLW and WSAI from the Gibson Hotel, Cincinnati.

- 8.30 a.m.—Devotional Period.
- 8.45 a.m.—Organ Melodies.
- 9.00 a.m.—Popular Music Half-Hour.
- 12 noon—Musical Program.
- 12.15 p.m.—Jack Gralnger.
- 12.30 p.m.—Popular Music.
- 1.00 p.m.—Noon-Day Musicales.
- 5.00 p.m.—Musical Program.
- 6.00 p.m.—Concert Hour.
- 7.00 p.m.—Popular Music.
- 4.30 p.m.—Terri La Franconi, tenor.

Theatre Guest Tickets for MISS GLADYS McALLISTER  
 76 Sydney Street, Saint John, N. B.

## Gypsies' Tenor



BEN KLASSEN,  
 San Francisco tenor, is starring soloist of the Gypsies program over WEAF every Monday at 10.00 p.m.

7.30 p.m. to 12.00 mid.—CRC Programs  
 See details top of 1st col.

### CHNS—Halifax—930k.

- 10.00 a.m.—Morning Devotions.
- 10.15 a.m.—Musical Program.
- 10.45 a.m.—News Review.
- 10.55 a.m.—Musical Inte lude.
- 11.00 a.m.—Woman's Radio Institute.
- 12 noon—Phinney's Victor Program.
- 12.15 p.m.—Services.
- 12.30 p.m.—Crazy Water Crystallers.
- 12.45 p.m.—News Bulletin.
- 1.00 p.m.—Time; Market Reports, etc.
- 1.15 p.m.—Oxydol's Own Ma Perkins.
- 5.30 p.m.—Uncle Mel.
- 6.00 p.m.—Time. Music; Services.
- 6.50 p.m.—Horoscope; Services.
- 6.45 p.m.—Market Reports.
- 7.00 p.m.—Time. Film Flashes.
- 7.15 p.m.—Reid's Hawaiian Guitars.
- 7.25 p.m.—Real Life Dramas.
- 7.30 p.m. to 12.00 mid.—CDC Programs  
 See details top of 1st Col.

### CKIC—Wolfville—1010k.

12 noon—Studio Program.

### CFCY—Charlottetown—630k.

- 12 noon—Musical Program.
- 12.31 p.m.—Stock Quotations.
- 12.40 p.m.—Home Forum Program.
- 1.00 p.m.—Luncheon Program.
- 5.00 p.m.—Outports Program.
- 5.45 p.m.—Mother's Own Tea.
- 6.00 p.m.—Kelly & McInnis.
- 6.15 p.m.—Musical Program.
- 6.30 p.m.—Sleepy Town Express.
- 6.45 p.m.—Davis & Lawrence.
- 7.00 p.m.—Stock Quotations.
- 7.15 p.m.—S. A. MacDonald.
- 7.30 p.m. to 12.00 mid.—CRC Programs  
 See details top of 1st Col.

## COSMAN, "THE SIGN MAN"

269 Union Street :: Saint John, N. B.

### WJZ—New York—760k.

- NBC RED Network—WBAL (Baltimore), WBZ (Boston), WLW (Cincinnati), WTIC (Hartford), KDKA (Pittsburgh). See Log top 2nd col.
- 4.45 p.m.—King's Jesters, quartette.
  - 5.00 p.m.—Betty and Bob, sketch.
  - 5.15 p.m.—Song- and Stories.
  - 6.00 p.m.—Junior Radio Journal.
  - 6.15 p.m.—Clark Dennis, tenor.
  - 6.30 p.m.—The Singing Lady.
  - 6.45 p.m.—Little Orphan Annie, drama.
  - 7.00 p.m.—Esso News Reporter.
  - 7.05 p.m.—U. S. Army Band Concert.
  - 7.30 p.m.—Press-Radio News Service.
  - 7.35 p.m.—King's Guard, qua tette.
  - 7.45 p.m.—Lowell Thomas, news.

## There's a Warning in Tired Eyes!

Headaches and fatigue follow the warning of tired eyes . . . and they may lead to more serious ills, if the cause is not corrected.

**BOYANER BROS**  
 Optometrists 300 Hill Charlott

# ASSURED SERVICE



Street Railway  
 Gas : : : : :  
 Electric Light  
 Power : : : : :

## NEW BRUNSWICK POWER CO.

THE HOME OF MR. REDDY KILOWATT  
 SAINT JOHN, N. B.

- 8.00 p.m.—Dinner Concert, organ.
- 8.15 p.m.—Capt. Tim's Adventures.
- 8.30 p.m.—Lum and Abner, comedy.
- 8.45 p.m.—Sylvia Froos, blues singer.
- 9.00 p.m.—Fibber McGee and Molly.
- 9.30 p.m.—Evening in Paris.
- 10.00 p.m.—Sinclair's Greater Minstrels
- 10.30 p.m.—Princess Pat Revue.
- 11.00 p.m.—Ray Knight's Cuckoo Hour.
- 11.30 p.m.—To be announced.
- 12.00 mid.—Esso News Reporter.
- 12.05 a.m.—Dorothy Lamour, soprano.
- 12.15 a.m.—Ink Spots, Negro quartette.
- 12.30 a.m.—Ray Noble and His Orch.
- 1.00 a.m.—Shandor, the violinist.
- 1.08 a.m.—Howard Lally and His Orch.
- 1.30 a.m.—Don Bestor with His Orch.

### WEAF—New York—660k.

- NBC BLUE Network—WGY (Schenectady), WEEL (Boston), WTAM (Cleveland). See Log top 2nd col.
- 4.30 p.m.—Vic and Sade, comedy.
  - 4.45 p.m.—The O'Neills, drama.
  - 5.00 p.m.—Woman's Radio Review.
  - 5.30 p.m.—"Girl Alone," drama.
  - 5.45 p.m.—Grandpa Burton, humor.
  - 6.00 p.m.—Al Pearce and His Gang.
  - 6.30 p.m.—Tom Mix Adventurers.
  - 6.45 p.m.—To be announced.
  - 7.00 p.m.—Flying Time.
  - 7.15 p.m.—Esso News Reporter.
  - 7.20 p.m.—Lee Gordon and His Orch.
  - 7.30 p.m.—Press-Radio News Service.
  - 7.35 p.m.—New Deal Policies.
  - 7.45 p.m.—Billy and Betty.
  - 8.00 p.m.—Amos 'n' Andy, comedy.
  - 8.15 p.m.—Uncle Ezra, comedy skit.
  - 8.30 p.m.—Education in the News.
  - 8.45 p.m.—Gould and Shefter, pianos.
  - 9.00 p.m.—Hammerstein's Music Hall
  - 9.30 p.m.—"Voice of Firestone," with Nelson Eldy, baritone.
  - 10.00 p.m.—A & P Gypsies, music.
  - 10.30 p.m.—Vick's Opera House.
  - 11.00 p.m.—Carnation Milk Program.
  - 11.30 p.m.—National Radio Forum.
  - 12.00 mid.—Xavier Cugat and His Orch.
  - 12.30 a.m.—Esso News Reporter.
  - 12.35 a.m.—Jubilee Choir, Magnolia Blossoms, Flisk.
  - 1.00 a.m.—Benny Goldman's Orchestra

### WABC—New York—860k.

- Columbia CBS chain—WCAU (Philadelphia), WGR (Buffalo), WNAC (Boston). See Log at top 2nd col.
- 4.00 p.m.—Manhattan Matinee.
  - 4.30 p.m.—Hooster Hop.
  - 5.00 p.m.—Commercial Comment.
  - 5.30 p.m.—Chicago Variety Hour.
  - 5.45 p.m.—Tea at the Ritz.
  - 6.00 p.m.—Terry and Ted Adventures
  - 6.15 p.m.—Vocals by Verrill.
  - 6.30 p.m.—All-American Boy, drama.
  - 7.00 p.m.—Buck Rogers in the 25th Century (fantastic).
  - 7.15 p.m.—Bobby Benson, Sunny Jim.
  - 7.30 p.m.—Press-Radio News Service.
  - 7.35 p.m.—"Vanished Voices," musical and dramatic.
  - 8.00 p.m.—Myrt and Marge, drama.
  - 8.15 p.m.—Ted Husing and the Charlotiers.
  - 8.30 p.m.—"Singin' Sam."
  - 8.45 p.m.—Boake Carter, news.
  - 9.00 p.m.—Guy Lombardo's Orchestra.
  - 9.30 p.m.—Pick and Pat, drama.
  - 10.00 p.m.—Lux Radio Theatre.
  - 11.00 p.m.—Wayne King and His Orch.
  - 11.30 p.m.—Talk by Anning S. Prall of the Radio Commission.
  - 11.45 p.m.—Clyde Barrie, baritone, with Concert Orchestra.
  - 12.00 mid.—Jack Denny and His Orch.
  - 12.30 a.m.—Vincent Lopez's Orchestra.
  - 1.00 a.m.—Morton Downey, tenor, and His Music.

## LET GRONDINES

Make your worn Silverware like New at small cost.—Nickel, Silver, Gold, Copper and Chromium Plating.—Out-of-town orders receive prompt attention.  
**JULES GRONDINES**  
 Phone 3-2761 24 Waterloo St. SAINT JOHN, N. B.

## E. S. STEPHENSON & CO., LIMITED

Nelson Street, Saint John, N. B.  
**ENGINEERS MANUFACTURERS AGENTS**  
 SPECIALIZING IN  
**MECHANICAL and ELECTRICAL EQUIPMENT**

## MARITIME OIL & SUPPLY CO., LTD.

81 Prince William Street Saint John, N. B.  
 Distributors of Alemite Products and Lubricating Equipment  
 Stewart-Warner Radios  
 Evinrude and Elto Outboard Motors and Power Lawn Mowers  
 Alemite Lubricating Equipment and All Makes of Outboards Repaired and Serviced.

## MICKEY MOUSE

## NOT AS LIGHT AS HIS FEATHERS!

By WALT DISNEY

HOME FROM A STRENUOUS TRIP MICKEY AND MINNIE ARE OUT GETTING SOME FRESH AIR IN HORACE'S NEW CAR!

BUT, MICKEY—WHAT HAPPENED TO ALL THOSE PEOPLE WHO WERE LEFT ON DR. VULTUR'S ISLAND?

A BATTLESHIP'S GOIN' OUT T' GET 'EM!

MOST OF 'EM WERE JUST SAILORS FROM CAPTURED SHIPS, SO THEY'LL BE RETURNED HOME!

TH' REST OF 'EM WILL PROB'LY BE SENT T' PRISON, ALONG WITH DR. VULTUR AN' HIS CREW!

GOODNESS, MICKEY! WHAT AN' AWFUL BUMP!

YEAH! I'M SORRY! I WAS SO BUSY TALKIN' I GUESS I DIDN'T SEE IT IN TH' ROAD!

© 1936 by Walt Disney Enterprises. Great Britain rights reserved.