

# RADIO PROGRAMS

TUESDAY, January 14, 1936

THE TIME GIVEN IN ALL PROGRAMS IS ATLANTIC STANDARD  
"The Broadcaster" cannot be responsible for errors or omissions in the following programs or for the last-minute changes by stations or sponsors.

### TODAY'S CANADIAN RADIO COMMISSION PROGRAM

- 6.30 p.m.—Ritz Carlton Concert Trio, from Montreal.
- 6.45 p.m.—Closing Stock Quotations, from Montreal.
- 7.00 p.m.—Overseas Program, rebroadcast, from Ottawa.
- 7.30 p.m.—Canadian Press News.
- 7.35 p.m.—Understanding Music, with Howard Barlow's Orch.
- 8.00 p.m.—Luigi Romanelli and His Orchestra.
- 8.15 p.m.—"West to East," Heber and William Morton.
- 8.30 p.m.—Young Tim, children's serial, direction Edgar Stone.
- 8.45 p.m.—Novelty Instrumental Group under Maurice Durienn.
- 9.00 p.m.—From the Green Room, international stars of stage and radio, Loew's Theatre.
- 9.30 p.m.—Music For Today, exchange from New York City.
- 10.00 p.m.—No Mournful Numbers, from Winnipeg.
- 10.30 p.m.—Ici Paris, soloist and orchestra, from Montreal.
- 11.00 p.m.—Au Clair de la Lune, soloists and orchestra, Edmonton.
- 11.30 p.m.—The Maintenance of Your Receiver.
- 11.45 p.m.—Canadian Press News Bulletin and Weather Forecast

### CHSJ—Saint John—1120k.

- 6.00 a.m.—Weather Forecast.
- 7.45 a.m.—Recordings.
- 7.50 p.m.—Weather; News; Music.
- 8.15 a.m.—"Thoughts For Today."
- 8.30 a.m.—Musical Program.
- 10.00 a.m.—"Hour of Good Cheer."
- 11.00 a.m.—Fry-Cadbury Storyette.
- 11.05 a.m.—Community Doings.
- 11.30 a.m.—Moods Musicale.
- 12 noon.—Musical Program.
- 12.15 p.m.—Wassons' Musical Program.
- 12.30 p.m.—Ideal Stores' Program.
- 12.45 p.m.—Driscoll's' Program.
- 2.30 p.m.—"On the Air."
- 3.00 p.m.—Rex Battle's Orch., Toronto
- 5.05 p.m.—News; Musical Program.
- 5.30 p.m.—Musical Program.
- 6.00 p.m.—"Lucky," Emerson Bros.
- 6.10 p.m.—Capitol Theatre News.
- 6.15 p.m.—Ma Itime Farmer Program.
- 6.30 p.m.—Musical Program, CRBC.
- 6.45 p.m.—Stock Market Reports, CRC.
- 7.00 p.m.—"True Confessions," Cystex.
- 7.15 p.m.—Musical Recordings.
- 7.30 p.m. to 12.00 mid.—Canadian Radio Commission Programs  
See details top of 1st col.

Office, 3-3047. Res., 3-8564  
**ALBERT V. WEATHERHEAD**  
M.R.A.I.C.  
Architect and Architectural Engineer  
87 CHARLOTTE STREET  
Saint John, N. B.  
MEMBER:  
Royal Architects' Inst. of Canada  
Architects' Association of N. B.,  
Assoc. of Prof. Engineers of N. B.

**Port Royal Pulp & Paper Co., Ltd.**  
MANUFACTURERS OF  
HIGH-GRADE BLEACHED SULPHITE  
SAINT JOHN, N. B.

**J. & G. McELWAIN** First-Class Auto Body  
Repairing and Painting  
AUTO TOPS—AUTO WOODWORK—WELDING  
>> TRUCK LETTERING A SPECIALTY <<  
Rothsay Avenue Saint John, N. B. Telephone 3-2878

### LOG OF STATIONS

#### MARITIME PROVINCES—

- CHSJ—SAINT JOHN—1120k.
- CFNB—FREDERICTON—550k.
- CKGW—MONCTON—1370k.
- CHNS—HALIFAX—930k.
- CJCB—SYDNEY—1240k.
- CFCY—CHARLOTTOWN—630k.
- CHCK—CHARLOTTOWN—1310k.
- CHGS—SUMMERSIDE—1450k.

#### UPPER CANADIAN—

- CFCF—MONTREAL—600k.
- CKAC—MONTREAL—730k.
- CRCM—MONTREAL—910k.
- CHNC—NEW CARLISLE—1210k.
- CFRB—TORONTO—690k.
- CRCT—TORONTO—840k.
- CKLW—WINDSOR—1030k.

#### UNITED STATES—

- WPG—ATLANTIC CITY—1100k.
- WBAL—BALTIMORE—1060k.
- WLBZ—BANGOR—620k.
- WBZ—BOSTON—990k.
- WEEI—BOSTON—590k.
- WNAC—BOSTON—1230k.
- WGR—BUFFALO—550k.
- WLW—CINCINNATI—700k.
- WTAM—CLEVELAND—1070k.
- WJR—DETROIT—750k.
- WTIC—HARTFORD—1060k.
- WOR—NEWARK—710k.
- WLWL—NEW YORK—1100k.
- WCAU—PHILADELPHIA—1170k.
- KDKA—PITTSBURGH—980k.
- WCBS—PORTLAND—940k.
- WGY—SCHENECTADY—840k.

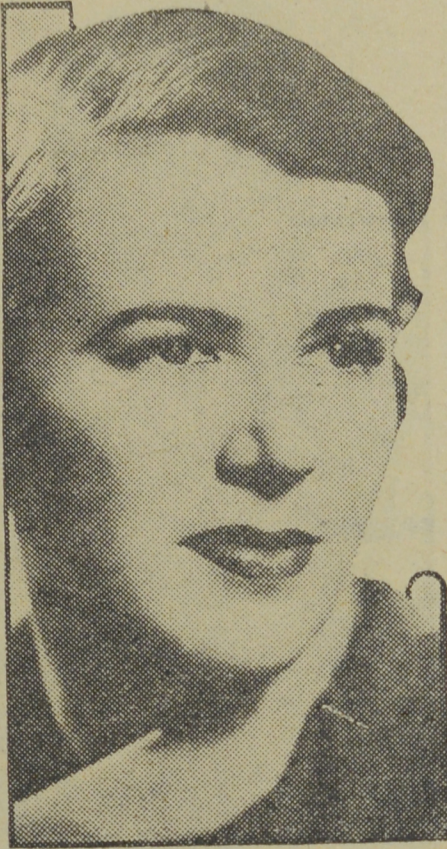
#### CFNB—Fredericton—550k.

- 8.00 a.m.—Musical Clock.
- 8.30 a.m.—M. M. A. Talk.
- 8.35 a.m.—"The Listening Post."
- 9.00 a.m.—Birthday Program.
- 9.15 a.m.—Strings.
- 9.30 a.m.—Maytag Melodies.
- 10.00 a.m.—Concert Period.
- 10.15 a.m.—Studies in Black and White
- 10.30 a.m.—Fry-Cadbury Storyette.
- 10.45 a.m.—Enterprise Foundry Prog.
- 11.00 a.m.—Happy Warrior Hour.
- 12 noon.—Purina Program.
- 12.15 p.m.—Frigidaire Program.
- 12.45 p.m.—Building Products' Prog.
- 1.00 p.m.—Sherwin-Williams Musicale.
- 1.30 p.m.—Marconi Radio Hour.
- 2.30 p.m.—Royal York Orch., Toronto.
- 4.30 p.m.—Musical Comedy Memories.
- 5.00 p.m.—Monitor News Bulletins.
- 5.30 p.m.—Dance Music.
- 5.45 p.m.—Campbell Axe Program.
- 6.00 p.m.—Band Concert.
- 6.15 p.m.—Canada Cement Program.
- 6.30 p.m.—Burgess Battery Program.
- 6.45 p.m.—MacDonald Program.
- 7.00 p.m.—News Bulletins.
- 7.15 p.m.—Weed Chain Program.
- 7.30 p.m. to 12.00 mid.—CRC Programs  
See details top of 1st col.

#### CKCW—Moncton—1370k.

- 8.00 a.m.—Musical Program.
- 8.10 a.m.—News Items.
- 8.30 a.m.—Devotional Period.
- 8.45 a.m.—Organ Melodies.

### Magazine Columnist



A new picture of LOIS LONG, sophisticated mistress-of-ceremonies, who brings to radio a new informality in introducing famous figures of the stage, supper clubs and literary world. Miss Long, well known for her magazine columns which she signs "Lipstick," and as a young woman about New York town, now heads her own variety hour on CBS each Tuesday afternoon at 4.00 p.m., A.S.T.

- 9.00 a.m.—Popular Music Half-Hour.
- 12 noon.—Musical Program.
- 12.15 p.m.—News.
- 12.30 p.m.—Popular Music.
- 1.00 p.m.—Noon-Day Musicale.
- 5.00 p.m.—Musical Program.
- 6.00 p.m.—Concert Hour.
- 7.00 p.m.—Radio Guide Gossip.
- 7.15 p.m.—Katherine Thompson Blight and W. J. Lewis.
- 7.30 p.m. to 12.00 mid.—CRC Programs  
See details top of 1st col.

#### CHNS—Halifax—930k.

- 10.00 a.m.—Morning Devotions.
- 10.15 a.m.—Musical Program.
- 10.45 a.m.—News Review.
- 10.55 a.m.—Fry-Cadbury Program.
- 11.00 a.m.—Woman's Radio Institute.
- 12 noon.—Phinney's Victor Program.
- 12.15 p.m.—Services.
- 12.30 p.m.—Ed. Baker, pianist.
- 12.45 p.m.—News Bulletin.
- 1.00 p.m.—Time; Market Reports, etc.
- 1.15 p.m.—Oxydol's Own Ma Perkins.
- 5.30 p.m.—Uncle Mel.
- 6.00 p.m.—Time. Music; Services.
- 6.30 p.m.—Horoscope; Services.
- 6.45 p.m.—Market Reports.
- 7.00 p.m.—Ervin Street, accordionist.
- 7.15 p.m.—Musical Program.
- 7.30 p.m. to 12.00 mid.—CRC Programs  
See details top of 1st col.

#### GOSMAN, "THE SIGN MAN"

269 Union Street :: Saint John, N. B.

#### CFCY—Charlottetown—630k.

- 12 noon.—Pee-less Program.
- 12.15 p.m.—Prowse Bros. Program.
- 12.31 p.m.—Stock Quotations.
- 12.40 p.m.—Home Forum Program.
- 5.00 p.m.—Outports Program.
- 5.30 p.m.—Moore & McLeod Program.
- 6.00 p.m.—Musical Program.
- 6.15 p.m.—Dry Cleaners' Program.
- 6.30 p.m.—Sleepy Town Express.
- 6.45 p.m.—Merchants' Program.
- 7.00 p.m.—Stock Quotations.
- 7.15 p.m.—Jack Cameron.
- 7.30 p.m. to 12.00 mid.—CRC Programs

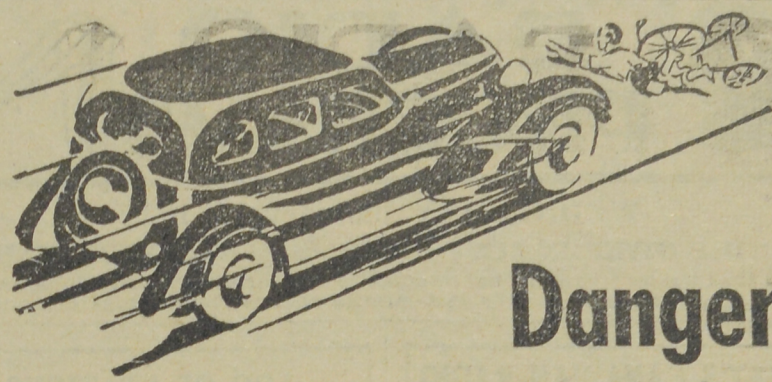
#### CKIC—Wolfville—1010k.

- 12 noon.—Studio Program.
- 6.00 p.m.—Studio Program.

### Have Your Diamonds Re-set

in modern mounts or RE-TIPPED and Made Secure. We can do this in our up-to-date workshop at 9 KING SQUARE, first floor up, (next to Bardsley Hat Factory, Saint John, N. B.)

**CECIL V. COWIE**  
EYE GLASS FRAMES  
ELECTRICALLY WELDED



## Danger

You can never tell when you're going to have to depend on the gripping power of your brakes to protect your own life and the lives of others. For smooth, powerful brakes that will give you complete confidence when on the road always demand—

is nearly always unexpected when driving. Be prepared by having dependable brakes.

# MINTEX

TWICE AS SAFE BRAKE LININGS

WOVEN : MOULDED : DIE PRESSED : HALO

## A Lining For Every Type of Brake

#### WJZ—New York—760k.

- NBC RED Network—WBAL (Baltimore), WBZ (Boston), WLW (Cincinnati), WTIC (Hartford), KDKA (Pittsburgh). See Log top 2nd col.
- 7.00 p.m.—"Flying Time."
- 7.10 p.m.—Esso News Reporter.
- 7.30 p.m.—Press-Radio News Service.
- 7.35 p.m.—To be announced.
- 7.45 p.m.—Lowell Thomas, news.
- 8.00 p.m.—"Easy Aces," sketch.
- 8.15 p.m.—The Norsemen Quartette.
- 8.30 p.m.—Lum and Abner, comedy.
- 8.45 p.m.—Omega Prog., Phil Cook.
- 9.00 p.m.—Eno Crime Clues, drama.
- 9.30 p.m.—Welcome Valley.
- 10.00 p.m.—Ben Bernie and His Orch.
- 10.30 p.m.—Helen Hayes, songs.
- 11.00 p.m.—To be announced.
- 11.15 p.m.—Ray Heatherton, baritone.
- 11.30 p.m.—Meredith Willson's Orch.
- 12.00 mid.—Esso News Reporter.
- 12.05 a.m.—Helen Hayes, Orchestra.
- 12.05 a.m.—Dick Gasparre's Orch.
- 12.30 a.m.—Henry King and His Orch.
- 1.00 a.m.—Shandor, the violinist.
- 1.08 a.m.—Ranny Weeks and His Orch.
- 1.30 a.m.—L. Romanelli's Orchestra.

#### WABC—New York—860k.

- Columbia CBS chain—WCAU (Philadelphia), WGR (Buffalo), WNAC (Boston). See Log at top 2nd col.
- 12.30 a.m.—Louis Armstrong's Orch.
- 5.00 p.m.—Cleveland String Quartette.
- 5.30 p.m.—Science Service.
- 5.45 p.m.—Three Little Words.
- 6.00 p.m.—Terry and Ted Adventure.
- 6.15 p.m.—Jimmy Farrell, baritone.
- 6.30 p.m.—The All-American Boy.
- 6.45 p.m.—Tito Guizar, tenor.
- 7.00 p.m.—Benay Venuta, songs
- 7.15 p.m.—News of Youth.
- 7.30 p.m.—Press-Radio News Service.
- 7.35 p.m.—Understanding Music.
- 8.00 p.m.—Myrt and Marge, drama.
- 8.15 p.m.—Jimmy Farrell, baritone.
- 8.30 p.m.—Kate Smith and Her Guest Stars, with Orchestra.
- 8.45 p.m.—Boake Carter, news.
- 9.00 p.m.—Lavender and Old Lace.
- 9.30 p.m.—Packard Presents Lawrence Tibbett, baritone.
- 10.00 p.m.—Camel Caravan, with Glen Gray and His Orchestra.
- 10.30 p.m.—Fred Waring's Pennsylvanians and Their Music.
- 11.30 p.m.—On the Air with Guskin.
- 12.00 mid.—Ozzie Nelson's Orchestra.

Bread, Rolls, Cake, Pastry with the Real Home Flavor.  
**SHIELD'S HOME BAKERY,**  
265 Main Street.

#### WEAF—New York—660k.

- NBC BLUE Network—WGY (Schenectady), WEEI (Boston), WTAM (Cleveland). See Log top 2nd col.
- 6.30 p.m.—James Wilkinson, baritone.
- 6.45 p.m.—To be announced.
- 7.00 p.m.—Flying Time, aviation.
- 7.15 p.m.—Mid-Week Hymn Sing.
- 7.30 p.m.—Press-Radio News Service.
- 7.45 p.m.—Billy and Betty.
- 8.00 p.m.—Amos 'n' Andy, comedy.
- 8.15 p.m.—"Popeye the Sailor."
- 8.30 p.m.—Human Side of the News.
- 8.45 p.m.—You and Your Government.
- 9.00 p.m.—Leo Reisman and His Orchestra, with Phil Dewey.
- 9.30 p.m.—Lady Esther Program.
- 10.00 p.m.—N. T. G. and His Girls.
- 10.30 p.m.—The Jumbo Fire Chief Show with guest artists.
- 11.00 p.m.—Swift Co. Program.
- 11.30 p.m.—To be announced.
- 12.00 mid.—Ruby Newman's Orchestra.
- 12.30 a.m.—Esso News Reporter.
- 12.35 a.m.—E. Mad Iguera's Orchestra.
- 12.45 a.m.—Jesse Crawford, organist.
- 1.00 a.m.—Leon Belasco and His Orch.
- 1.30 a.m.—Earl Hines with His Orch.

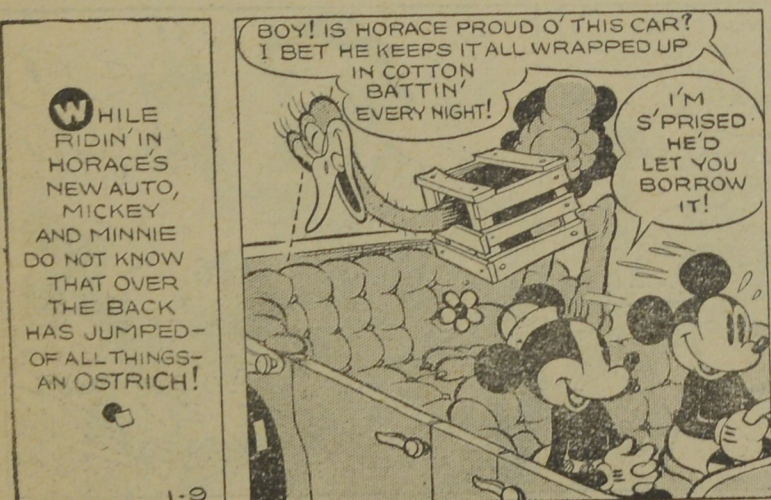
**F. S. WALKER**  
PLUMBING and HEATING  
14 Church St., Phone 3-2025  
SAINT JOHN, N. B.

Theatre Guest Tickets for  
D. C. SKINNER  
86 Mecklenburg St., Saint John, N. B.

COMPLETE  
**LAUNDRY**  
SERVICE  
PROMPT and EFFICIENT  
Telephone 3-2451  
CITY WET WASH LAUNDRY, Ltd.

**ELECTRICAL SUPPLIES of Every Description**  
PROMPT SERVICE TO ALL PARTS OF THE MARITIMES  
**H. M. HOPPER CO., LIMITED**  
51-59 DOCK STREET—SAINT JOHN, N. B.

### MICKEY MOUSE



### DAISIES WILL TELL

