

# RADIO PROGRAMS

SATURDAY, February 15, 1936

THE TIME GIVEN IN ALL PROGRAMS IS ATLANTIC STANDARD  
"The Broadcaster" cannot be responsible for errors or omissions in the following programs or for the last-minute changes by stations or sponsors.

## TODAY'S CANADIAN RADIO COMMISSION PROGRAM

6.30 p.m.—Hotel Frontenac Orchestra.  
6.45 p.m.—Closing Stock Quotations, Montreal Stock Exchange.  
7.00 p.m.—Program from Overseas, by British Broadcasting Co.  
7.30 p.m.—En Dinant, CRBC Dinner Hour Concert Music.  
8.00 p.m.—Rex Battle and His Orch.  
8.15 p.m.—Men of Melody, the Guardsmen, male octette.  
8.30 p.m.—Hortense Lord, pianist.  
8.45 p.m.—Book Review by Prof. J. F. Macdonald, Toronto.  
9.00 p.m.—"Cotters' Saturday Night," Scotch program, Sydney.  
9.30 p.m.—"Let's Go To Music Hall," old-time Music Hall program by George Young.  
10.00 p.m.—N.H.L. Hockey: Toronto vs. Detroit Red Wings.  
11.30 p.m.—Don Bestor and His Orch.  
11.45 p.m.—Canadian Press News Bulletin and Weather Forecast

### CHSJ—Saint John—1120k.

6.00 a.m.—Weather Forecast.  
7.45 a.m.—News; Weather, Music.  
8.15 a.m.—"Thoughts For Today."  
8.30 a.m.—Musical Program.  
10.00 a.m.—"Hour of Good Cheer."  
11.30 a.m.—Moods Musicales.  
12 noon.—Musical Program.  
12.15 p.m.—Wassons' Musical Program.  
12.45 p.m.—Ideal Stores' Musicales.  
1.00 p.m.—Driscolls' Program.  
1.15 p.m.—City Wet Wash Laundry.  
2.30 p.m.—Rex Battle's Orch., Toronto  
5.00 p.m.—"On the Air."  
5.05 p.m.—News; Musical Program.  
5.30 p.m.—Musical Program.  
6.00 p.m.—Capitol Theatre News.  
6.05 p.m.—to 12.00 mid.—CRC Programs  
See details top of 1st col.  
7.15 p.m.—Robin Hood Mills Program  
10.00 p.m.—N.H.L. Hockey Game.

### CKCW—Moncton—1370k.

8.00 a.m.—Musical Program.  
8.10 a.m.—News Items.  
8.30 a.m.—Devotional Period.  
8.45 a.m.—Organ Melodies.  
9.00 a.m.—Popular Music Half-Hour.  
12 noon.—Musical Program.  
12.15 p.m.—Jack Grainger.  
12.30 p.m.—Popular Music.  
1.00 p.m.—Noon-Day Musicales.  
5.00 p.m.—Musical Program.  
6.00 p.m.—Concert Hour.  
7.00 p.m.—Popular Music.  
7.30 p.m.—to 12.00 mid.—CRC Programs

### CFNB—Fredericton—550k.

8.00 a.m.—Musical Clock.  
8.30 a.m.—M. M. A. Talk.  
8.35 a.m.—"The Listening Post."  
9.00 a.m.—Birthday Party (Children's)  
9.30 a.m.—Merry Melodies.  
10.00 a.m.—Concert Period.  
10.30 a.m.—The Veiled Lady of Mystery  
10.45 a.m.—Enterprise Foundry Prog.  
11.00 a.m.—Happy Warrior Hour.  
12 noon.—Purina Program.  
12.15 p.m.—Building Products' Program  
12.30 p.m.—Sherwin-Williams' Musicales.  
1.00 a.m.—Frigidate Program.  
1.30 p.m.—Marconi Radio Hour.  
2.30 p.m.—Royal York Orch., Toronto.  
4.30 p.m.—All Request Program.  
5.00 p.m.—Monitor News Bulletins.

## New Spring Styles

in a great variety of materials. Made-to-your-measure. Guaranteed fit.

American Ladies' Tailoring  
631 Main St. Phone 3-3841

## LOG OF STATIONS

### MARITIME PROVINCES—

CHSJ—SAINT JOHN—1120k.  
CFNB—FREDERICTON—550k.  
CHNS—HALIFAX—930k.  
CJCB—SYDNEY—1240k.  
CFCY—CHARLOTTETOWN—630k.  
CHCK—CHARLOTTETOWN—1310k.  
CHGS—SUMMERSIDE—1450k.

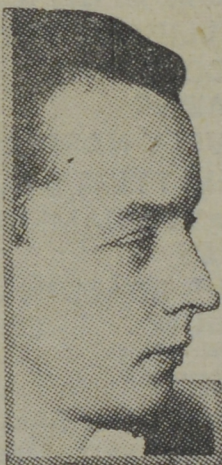
### UPPER CANADIAN—

CFCF—MONTREAL—600k.  
CKAC—MONTREAL—730k.  
CRCM—MONTREAL—910k.  
CHNC—NEW CARLISLE—1210k.  
CFRB—TORONTO—690k.  
CRCT—TORONTO—840k.  
CKLW—WINDSOR—1030k.

### UNITED STATES—

WPG—ATLANTIC CITY—1100k.  
WBAL—BALTIMORE—1060k.  
WLBZ—BANGOR—620k.  
WBZ—BOSTON—990k.  
WEEI—BOSTON—590k.  
WNAC—BOSTON—1230k.  
WGR—BUFFALO—550k.  
WLW—CINCINNATI—700k.  
WTAM—CLEVELAND—1070k.  
WJR—DETROIT—750k.  
WTIC—HARTFORD—1060k.  
WOR—NEWARK—710k.  
WLWL—NEW YORK—1100k.  
WCAU—PHILADELPHIA—1170k.  
KDKA—PITTSBURGH—980k.  
WCSH—PORTLAND—940k.  
WGY—SCHENECTADY—840k.

## Churchill Starred



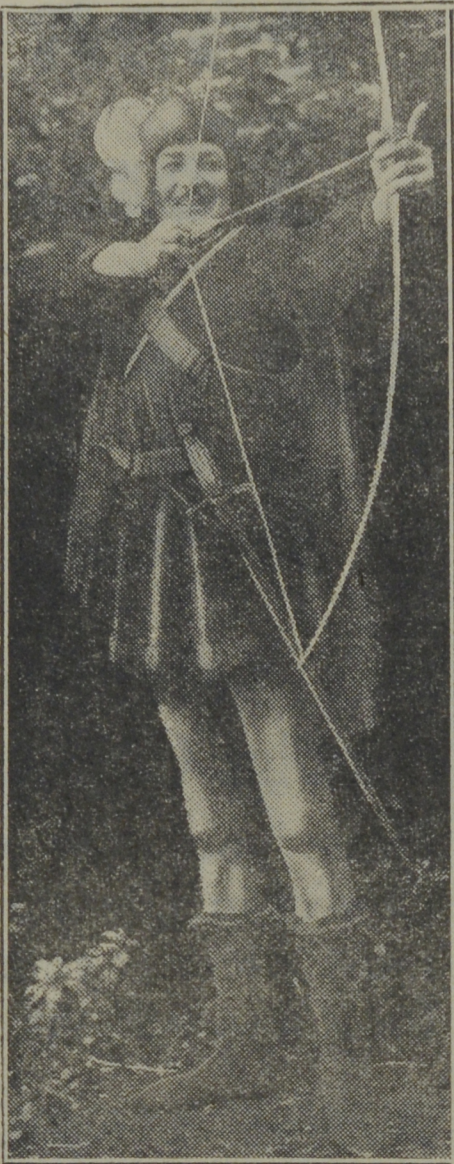
Stuart Churchill the young tenor featured for several seasons with Waring's Pennsylvanians, now is starred four times weekly in the new "Musical Reveries" on the WABC-Columbia network every Monday, Wednesday, Friday and Saturday from 1.15-1.30 p.m., A.S.T. Also heard on this quarter-hour are the dance arrangements of Ken Wood's orchestra and poetic readings by Orson Wells.

5.30 p.m.—Strings.  
5.45 p.m.—The Veiled Lady of Mystery  
6.00 p.m.—Musical Magician.  
6.15 p.m.—Canada Cement Program.  
6.30 p.m.—Burgess Battery Program.  
6.45 p.m.—MacDonald Program.  
7.00 p.m.—News Bulletins.  
7.15 p.m.—Souvenirs in Rhythm.  
7.30 p.m.—CRC Programs. (See details at top of 1st column)  
10.00 p.m.—N.H.L. Hockey Broadcast.

### CHNS—Halifax—930k.

5.15 p.m.—Uncle Mel.  
5.30 p.m.—Uncle Mel.  
6.13 p.m.—Schedule, News, Temper.  
6.25 p.m.—Horoscope; Services.  
6.30 p.m.—Market Reports.

## As "Robin Hood"



### GAYNE WHITMAN

in full costume as "Robin Hood," the role he plays in the serial entitled "Robin Hood and His Merry Men," sponsored by the millers of Robin Hood Flour. Whitman is one of the top-ranking radio actors of the day and is also well known for his work on the stage and screen. This program is broadcast over the following Maritime Stations:—

CHSJ, Saint John—Tuesday, Thursday, Saturday at 7.15 p.m.  
CFNB, Fredericton—Monday, Wednesday, Friday at 6.30 p.m.  
CFCY, Charlottetown—Tuesday, Thursday, Saturday at 6.00 p.m.  
CHNS, Halifax—Monday, Wednesday and Friday at 6.45 p.m.  
CJLS, Yarmouth—Monday, Wednesday and Friday at 6.45 p.m.  
CJCB, Sydney—Monday, Wednesday and Friday at 6.45 p.m.

7.00 p.m.—Jerry Naugler and His Orch.  
7.30 p.m.—to 12.00 mid.—CRC Programs  
See details top of 1st col

### CKIC—Wolfville—1010k.

6.00 p.m.—Studio Program.

### CJLS—Yarmouth—228.9

10.00 a.m.—Morning Devotional.  
10.20 a.m.—Organ Studies.  
10.45 a.m.—CJLS Half-Hour.  
11.30 a.m.—Sustaining Prog am.  
12 noon.—Grand Hotel Program.  
12.30 p.m.—News; Bait Reports.  
12.45 p.m.—Fisherman's Broadcast.  
1.00 p.m.—Weather.  
5.30 p.m.—Uncle Bob and the Kiddies.  
6.00 p.m.—Time Signals.  
6.00 p.m.—Mary Hayden's Piano Moods  
7.00 p.m.—Gateway Program.

## COSMAN, "THE SIGN MAN"

269 Union Street :: Saint John, N. B.

### CFCY—Charlottetown—630k.

11.00 a.m.—Women's Program.  
12 noon.—Peerless Beve ages.  
12.15 p.m.—Prowse Bros., Ltd. Program  
12.30 p.m.—Stock Quotations.  
12.40 p.m.—Home Forum Program.  
5.00 p.m.—Outposts Program.  
6.00 p.m.—Robin Hood and His Men.

# LUMBER



## PROMPT ATTENTION TO ALL ORDERS

The Lumber business is one where constant watchfulness and care are needed to secure the best results. We are always careful to protect our customers by selling them only the best in the particular grade purchased. **SATISFACTION IS OUR CONSTANT AIM.**

WRITE, WIRE OR TELEPHONE YOUR ORDERS TO

## MURRAY & GREGORY, Ltd.

Phone 3-3242

LUMBER—GLASS—MILLWORK  
BUILDERS' SUPPLIES

Saint John, N. B.

6.15 p.m.—Red Rose Tea Program.  
6.30 p.m.—Sleepy Town Express.  
6.45 p.m.—Westinghouse Program.  
7.00 p.m.—Stock Quotations.  
7.30 p.m.—to 12.00 mid.—CRC Programs  
(Details top of 1st. col.)  
10.00 p.m.—General Motors Hockey.

### WJZ—New York—760k.

NBC BLUE Network—WGY (Schenectady), WEEI (Boston), WTAM (Cleveland). See Log top 2nd col.  
6.00 p.m.—Musical Adventures.  
6.15 p.m.—Jackie Heller, tenor.  
6.30 p.m.—Dog Dramas.  
6.45 p.m.—Week-End News Review.  
7.05 p.m.—Temple of Song.  
7.30 p.m.—Press-Radio News Service.  
7.35 p.m.—King's Jester, quartette.  
7.45 p.m.—Jamboree, variety program.  
8.15 p.m.—Home Town, Talk.  
8.30 p.m.—"Message of Israel," talk.  
9.00 p.m.—El Chico, Spanish revue.  
9.15 p.m.—To be announced.  
10.15 p.m.—Russian Symphonic Choir.  
10.30 p.m.—National Barn Dance.  
11.30 p.m.—To be announced.  
12.00 mid.—Esso News Reporter.  
12.05 a.m.—Joe Rines and His O ch.  
12.30 a.m.—Ray Noble with His Orch.  
1.00 a.m.—Carefree Carnival.  
1.30 a.m.—Tom Coakley and His Orch.

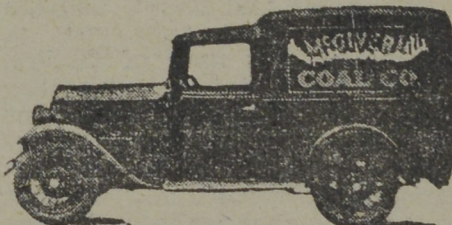
### WEAF—New York—660k.

NBC RED Network—WBAL (Baltimore), WBZ (Boston), WLW (Cincinnati), WTIC (Hartford), KDKA (Pittsburgh). See Log top 2nd col.  
6.30 p.m.—Kaltenmeyer's Kindergarten.  
7.02 p.m.—Otto Thurn's Orchestra.  
7.30 p.m.—Press-Radio News Service.  
7.35 p.m.—Resume of Olympic Games from Germany.  
7.45 p.m.—Religion in the News.  
8.00 p.m.—Thornton Fisher, sports.  
8.15 p.m.—"Popeye the Sailor."  
8.30 p.m.—Negro Male Chorus.  
9.00 p.m.—Lucky Strike's Hit Parade.  
10.00 p.m.—Rubinoff and His Violin.  
10.30 p.m.—The Shell Chateau.  
11.30 p.m.—To be announced.  
12.00 mid.—Dick Gasparre's Orchestra.  
12.30 a.m.—Esso News Reporter.  
12.35 a.m.—Ben Bernie with His Orch.

## EDWARD WALSH

78 Germain Street, Saint John, N. B.  
High-Grade CUSTOM-MADE  
BOOTS and SHOES  
REPAIRING A Specialty  
Established 40 Years at Same Stand

Theatre Guest Tickets for  
LEWIS ROSS  
Broad Street, Saint John, N. B.



Phone 3-2044

Corner Elm Street and Lansdowne Ave

### WABC—New York—860k.

Columbia CBS chain—WCAU (Philadelphia), WGR (Buffalo), WNAC (Boston). See Log at top 2nd col.  
5.00 p.m.—Motor City Melodies.  
5.30 p.m.—Chansonette, salon music.  
6.00 p.m.—Meadowbrook Orchestra.  
6.30 p.m.—Vincent Lopez's Orchestra.  
7.00 p.m.—Fred. Wm. Wile, politics.  
7.15 p.m.—News of Youth.  
7.30 p.m.—Press-Radio News Service.  
7.35 p.m.—Al Roth with His Orch.  
7.45 p.m.—Gogo De Lys, songs.  
8.00 p.m.—"The Atlantic Family On Tour," songs, drama.  
8.30 p.m.—Carborundum Band.  
9.00 p.m.—Palmolive Beauty Box.  
10.00 p.m.—Chesterfield Presents Orch.  
10.30 p.m.—Along Rialto Row.  
11.00 p.m.—California Melodies.  
11.30 p.m.—Debate on the Anti-Lynch-ing Bill.  
12.00 mid.—Abe Lyman and His Orch.  
12.30 a.m.—Ozzie Nelson's Orchestra.  
1.00 a.m.—Claude Hopkin's Orchestra.  
1.30 a.m.—Herbie Kay and His Orch.



## "THE STORE OF QUALITY"

L. D. BROWN

270 Main St. Phone 3-2156

A Thoroughly Up-To-Date  
MEAT, GROCERY AND  
PROVISION MARKET

NEW STORE and  
NEW EQUIPMENT

## THE DUNLOP HOTEL

KING SQUARE, SAINT JOHN  
Running Water in Every  
Room—\$1.00  
Dining Room Now in Operation  
Convenient Garage or Parking

BUILD SAFELY  
DUNTILE  
EASTERN CEMENT PRODUCTS  
111 Princess St. Saint John N.B.

JAS. McALLISTER & SONS  
GILBERT'S LANE DYE WORKS

Dyeing : Scouring : Dry Cleaning  
AT SHORTEST NOTICE  
—LACE CURTAINS A SPECIALTY—  
AT LOWEST RATES

Phone 3-2911  
:: SAINT JOHN, N. B. ::

## MICKEY MOUSE

## "BORROWED" FINERY

By WALT DISNEY

IN DEBT \$264.13—WITH LESS THAN TWO WEEKS IN WHICH TO PAY IT!—  
MICKEY IS TRYING FRANTICALLY TO RAISE THE MONEY!

