

RADIO PROGRAMS

SUNDAY, February 16, 1936

THE TIME GIVEN IN ALL PROGRAMS IS ATLANTIC STANDARD
"The Broadcaster" cannot be responsible for errors or omissions in the following programs or for the last-minute changes by stations or sponsors.

TODAY'S CANADIAN RADIO COMMISSION PROGRAM

4.00 p.m.—New York Philharmonic Orchestra.
6.00 p.m.—Vesper Hour, Winnipeg.
7.00 p.m.—"And It Came To Pass," Biblical drama on story the Ten Commandments.
7.30 p.m.—Events of Canadian Interest, from Halifax, N. S.
7.45 p.m.—"For You Alone," featuring Evan Sisters and Others.
8.00 p.m.—"Garden of Melody," musical tone pictures, Regina.
8.30 p.m.—Band Box Revue, Detroit.
9.00 p.m.—Radio Concert Canadian.
9.30 p.m.—Will Osborne and His Orch.
10.00 p.m.—Forgotten Footsteps, drama from Toronto.
11.00 p.m.—Atlantic Nocturne, music from Halifax.
11.30 p.m.—"Chasing Shadows," from Calgary, Alberta.
11.45 p.m.—Canadian Press News Bulletin and Weather Forecast

CHSJ—Saint John—1120k.

11.00 a.m.—Germain St. Baptist Church
3.45 p.m.—Protestant Orphans' Talk.
4.00 p.m.—N. Y. Philharmonic Orch.
6.00 p.m.—The Vesper Hour (CRO)
7.00 p.m.—Germain St. Baptist Church
8.00 p.m. to 12.00 mid.—Canadian Radio Commission Programs (Details top of 1st col.)

CFNB—Fredericton—550k.

11.00 a.m.—Wilmot United Church.
4.00 p.m.—N. Y. Philharmonic Orch.
7.00 p.m.—Wilmot United Church.
8.00 p.m. to 12.00 mid.—Canadian Radio Commission Progs.
See details top of 1st Col.

CHNS—Halifax—930k.

3.30 p.m.—Christian Science Program.
4.00 p.m.—N. Y. Philharmonic Orch.
6.00 p.m.—Full Gospel Church.
7.00 p.m. to 12.00 mid.—Canadian Radio Commission Programs
See details top of 1st col.
9.00 p.m.—Harbor Lights.
9.30 p.m.—News.

CKIC—Wolfville—1010k.

3.00 p.m.—Religious Service.

CJLS—Yarmouth—228.9

7.00 p.m.—Sacred Hour.

CFCY—Charlottetown—630k.

11.00 a.m.—The Sacred Hour.
4.00 p.m. to 12.00 mid.—CRO Programs
See details top of 1st Col.

WJZ—New York—760k.

NBC BLUE Network—WGY (Schenectady), WEEI (Boston), WTAM (Cleveland). See Log top 2nd col.
4.15 p.m.—Pine Mountain Merry-makers
4.45 p.m.—Kornienko's Oriental Orch.
5.00 p.m.—National Vespers.
5.30 p.m.—Design For Listening.
6.00 p.m.—Roses and Drums, drama.
6.30 p.m.—To be announced.
7.00 p.m.—Velvetone Music.
7.30 p.m.—Campana's Grand Hotel.
8.00 p.m.—Jack Benny, comedy, songs chatter, orchestra.
8.30 p.m.—Believe It Or Not, Ripley
9.00 p.m.—"The Melody Lingers On."
10.00 p.m.—"Life Is A Song."

FEEL FIT AT THE END OF EACH DAY

There's nothing like good eyesight to speed and improve the accuracy of your work, and leave you feeling fit for another day.

BOYANER BROS
Optometrists 111 Charlotte

LOG OF STATIONS

MARITIME PROVINCES—

CHSJ—SAINT JOHN—1120k.
CFNB—FREDERICTON—550k.
CKGW—MONCTON—1370k.
CHNS—HALIFAX—930k.
CJCB—SYDNEY—1240k.
CFCY—CHARLOTTETOWN—630k.
CHCK—CHARLOTTETOWN—1310k.
CHGS—SUMMERSIDE—1450k.

UPPER CANADIAN—

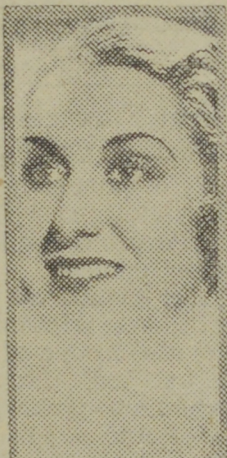
CFCF—MONTREAL—600k.
CKAC—MONTREAL—730k.
CRCM—MONTREAL—910k.
CHNC—NEW CARLISLE—1210k.
CFRB—TORONTO—690k.
CRCT—TORONTO—840k.
CKLW—WINDSOR—1030k.

UNITED STATES—

WPG—ATLANTIC CITY—1100k.
WBAL—BALTIMORE—1060k.
WLBZ—BANGOR—620k.
WBZ—BOSTON—990k.
WEEL—BOSTON—590k.
WNAC—BOSTON—1230k.
WGR—BUFFALO—550k.
WLW—CINCINNATI—700k.
WTAM—CLEVELAND—1070k.
WJR—DETROIT—750k.
WTIC—HARTFORD—1060k.
WOR—NEWARK—710k.
WLWL—NEW YORK—1100k.
WCAU—PHILADELPHIA—1170k.
KDKA—PITTSBURGH—980k.
WCSH—PORTLAND—940k.
WGY—SCHENECTADY—840k.

Former Typist

Vivian della Chiesa, youthful soprano to be heard on the triple-star "Musical Footnotes" program, was a file clerk and a stenographer before she soared to network stardom a little less than a year ago after winning a WBBM unknown singer contest against 2,000 entrants. "Musical Footnotes," on which Miss della Chiesa is co-starred with Franz Imhof and Ralph Ginsburgh's ensemble, is now heard on an extended coast-to-coast WABC-Columbia network each Sunday, at 2.30 to 2.45 p.m., A.S.T.



Vivian della Chiesa

10.30 p.m.—The Jergen Program, with Walter Winchell, gossip.
10.45 p.m.—Paul Whiteman's Musicale.
11.30 p.m.—Sunday at Seth Parker's.
12.00 mid.—Dandies of Yesterday.
12.10 a.m.—Press-Radio News Service.
12.15 a.m.—Shandor, the violinist.
12.30 a.m.—Palladium Orchestra.
1.00 a.m.—Benny Goodman's Orchestra.
1.30 a.m.—Fletcher Henderson and His Orchestra.

WEAF—New York—660k.

NBC RED Network—WBAL (Baltimore), WBZ (Boston), WLW (Cincinnati), WTIC (Hartford), KDKA (Pittsburgh). See Log top 2nd col.
3.00 p.m.—Melody Matinee.
4.00 p.m.—Harry Reser and His Orch.
4.30 p.m.—Metropolitan Opera.
5.00 p.m.—The Widow's Sons.
5.30 p.m.—Pop Concert, Walter Logan.

Fans Like Her



Platinum-haired ANNETTE SARGENT, actress-dancer, is winning high favor through her excellent interpretation of various roles in the current "Famous Jury Trials" dramas, over WLW and the Mutual network Sunday and Monday evenings at 11.00 o'clock, A.S.T. A member of the Dancing Masters of America Association when but 14 years old, Annette has danced with the Olga Fricker Concert Dancers, Lilyan Tashman, Sid Sivers, Senia Solomonoff and Peruchi. As an actress she has appeared with various stock companies. She began her radio career last year at WROL, in Knoxville, Tennessee.

6.00 p.m.—To be announced.
6.45 p.m.—Music by Richard Himber.
7.00 p.m.—The Catholic Hour
7.30 p.m.—Echoes of New York Town.
8.00 p.m.—"K-7," secret service story
8.30 p.m.—Fireside Recitals.
8.45 p.m.—Sunset Dreams (Ranch Boys and Morin Sisters, songs)
9.00 p.m.—Major Bowes' Amateur Hour
9.00 p.m.—The Merry-Go-Round
9.30 p.m.—Album of Familiar Music.
11.00 p.m.—General Motors' Concert.
12.00 mid.—The Melody Master.
12.30 a.m.—Press-Radio News Service.
12.30 a.m.—Little Jack Little's Orch.
1.00 a.m.—Ray Pearl with His Orch.
1.30 a.m.—Sammy Kaye and His Orch.

COSMAN, "THE SIGN MAN"

269 Union Street :: Saint John, N. B.

WABC—New York—860k.

Columbia CBS chain—WCAU (Philadelphia), WGR (Buffalo), WNAC (Boston). See Log at top 2nd col.
4.00 p.m.—The Philharmonic Orchestra of New York.
6.00 p.m.—"Melodiana," with Abe Lyman's Orchestra and Soles
6.30 p.m.—Frank Crumit and Julia Sanderson with Orch.
7.00 p.m.—National Amateur Night.
7.30 p.m.—Ed. McConnell, songs.
7.45 p.m.—"The Voice of Experience"
8.00 p.m.—Eddie Cantor, with Parkyakarkas and Orchestra.
8.30 p.m.—Phil Baker, with Beetle Bottle and His Orch.
9.00 p.m.—To be announced.
10.00 p.m.—Ford Sunday Evening Hour
11.00 p.m.—Wayne King and His Orch.
11.30 p.m.—Freddie Rich's Penthouse Party.
12.00 mid.—Jack Denny and His Orch.
12.30 a.m.—Press-Radio News Service.
12.35 a.m.—Isham Jones and His Orch.
1.00 a.m.—Ted Royal and His Orch.
1.30 a.m.—Harry Sosnik and His Orch.

Weeds' Printery

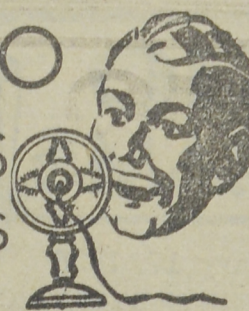
Printing and Binding
217 Prince Edward Street,
Saint John, N. B.

Theatre Guest Tickets for
MISS FLORENCE NAVES
207 King Street East, Saint John

PRESCRIPTIONS Are Our Specialty FRED F. WELSFORD DRUGGIST

Main Street, opposite Douglas Ave.
Mail and Telephone Orders given prompt attention.—Phone 3-2261.

RADIO NEWS FLASHES



DOC ROCKWELL RAPIDFIRE comic, is auditioning again. Latest was for a Detroit motor maker.

INDICATIONS ARE THAT the CBS spot, to be vacated by Phil Cook, will be taken over by the Ed Wynn show.

MORTON DOWNEY WILL take the featured role on the "Evening in Paris" program starting Monday, February 17.

PHIL BAKER, BEETLE, BOTTLE and Agnes Moorehead have returned to vaudeville for a brief period.

ADD TO THOSE SUGGESTED for the comedy spot on "Jumbo," those two arguing gentlemen, Tom Howard and George Shelton.

LATEST TO TACKLE THE airways for a build-up is Toya Susabe, beautiful American-born Japanese girl from Chicago.

A MYNAH BIRD, POSSESSING a vocabulary of 300 words, is being sought for an airing on Fred Allen's "Town Hall Tonight" program.

FRED ALLEN CELEBRATED Lincoln's birthday anniversary (February 12) by entertaining Jack Benny as his guest star on the "Town Hall Tonight" program.

THE MODERN CHOIR, UNDER the direction of Rapport and Cote, have been permanently signed to support James Melton on his "College Prom" programs over the NBC blue network Friday nights at 9.30.

"FIRESIDE RECITALS" which heretofore have only used guest conductors, signed Frank St. Leger, as permanent musical director, which is broadcast over the NBC red network, at 8.30 p.m.

EMANUEL FEUERMAN, THE noted Austrian musician, visiting America for the second time, is the first cellist to be featured as a guest artist on the NBC red network Sunday night concert series (General Motors).

PHIL BAKER SAYS HE CERTAINLY envies the radio editors in northern Canada. With their ear muffs on, they probably can't hear a thing. Phil's "Great American Tourist" broadcasts are heard Sundays at 8.30 p.m., over CBS.

ONE OF THE STRANGEST "business men" in the world—a man who made a business of killing jaguar in South American jungles—will be Phillips Lord's guest in his "Three Minute Thrills" on Tuesday, February 18. His name is Alexander Siemel.

AMONG THE THOUSANDS who deeply regretted the passing of Rudyard Kipling recently was Lawrence Tibbett, whose singing of "The Road to Mandalay" brought him a signed copy of the famous song from Kipling himself. Lawrence Tib-

BACKACHE
quickly disappears when the Liver and Kidneys are aroused by
DR. CHASE'S
KIDNEY PILLS

F. S. WALKER
PLUMBING and HEATING
14 Church St., Phone 3-2025
SAINT JOHN, N. B.

"ALADDIN"
(Kerosene)
MANTLE LAMPS
A Most Popular Gift
P. CAMPBELL & CO.
71 Prince William St., Saint John

BELYEA, MCNIECE & CO.
F. Lansdowne Belyea, C.A., C.P.A.,
David Reevey, C.A.
CONSULTANTS ON TAXATION
Chartered ACCOUNTANTS
Telephone 3-3746
Moncton Saint John Montreal

Have Your Diamonds Re-set
in modern mounts or RE-TIPPED and Made Secure. We can do this in our up-to-date workshop at 9 KING SQUARE, first floor up, (next to Bardsley Hat Factory, Saint John, N. B.)
CECIL V. COWIE
EYE GLASS FRAMES
ELECTRICALLY WELDED

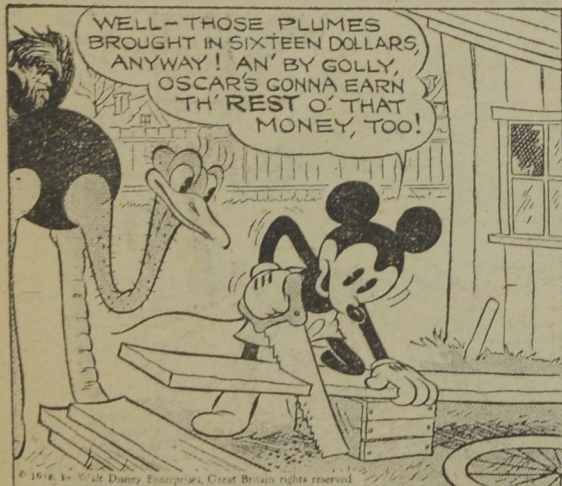
bette is heard over CBS each Tuesday at 9.30 p.m.

DEANE JANIS CLAIMS THAT she finds noisy New York the most restful place to memorize her songs and lines for the Walter O Keefe series of comedy sketches. The rhythm of traffic noises is an aid and not a hindrance to memory, the lovely singing-actress finds. Deane is heard on the "Caravan" series over CBS Tuesdays and Thursdays at 10.00 p.m.

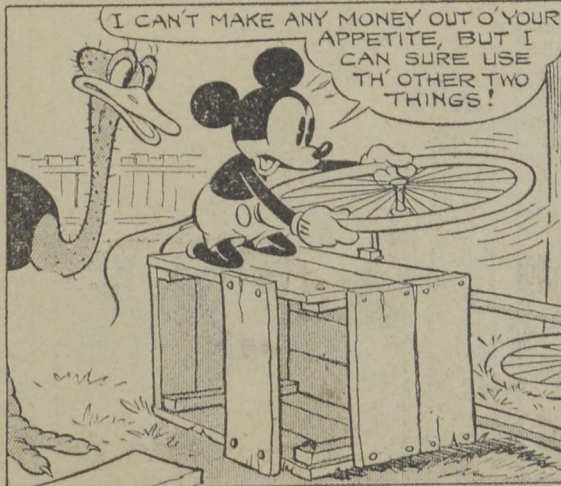
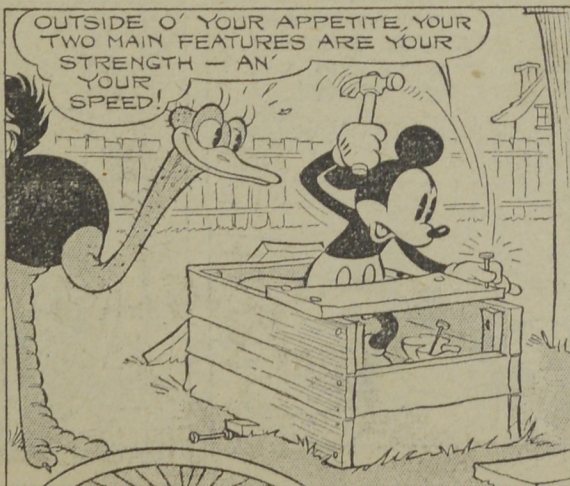
DR. FRANK BLACK, NBC'S general musical director, reveals an unusual fact about musicians in radio. Although those on the NBC roster are considered among the most proficient instrumentalists in America, numbering many virtuosi and concert artists in their midst, very few can carry a tune vocally! Frank Black's music is heard on several NBC programs each week, notably the "Magic Key" program over the blue network each Sunday at 3.00 p.m.

RADIODDITY: TWO OUTSTANDING radio stars whose work is regarded as "typically American" are Eddie Guest, often called "America's poet laureate" and Sigmund Romberg, the famous composer. Yet Guest was born in Birmingham, England, and Romberg is a native of Budapest. Both of them came to the United States as young boys and both becoming, in short order, outstanding citizens. Guest's "Welcome Valley" series is on the NBC blue chain Tuesdays at 9.30 p.m.

MICKEY MOUSE



HITCHING HIS WAGON TO A STAR



By WALT DISNEY

