

RADIO PROGRAMS

MONDAY, February 17, 1936

THE TIME GIVEN IN ALL PROGRAMS IS ATLANTIC STANDARD
"The Broadcaster" cannot be responsible for errors or omissions in the following programs or for the last-minute changes by stations or sponsors.

TODAY'S CANADIAN RADIO COMMISSION PROGRAM

- 7.00 p.m.—Overseas Program, BBC re-broadcast, from Ottawa.
- 7.30 p.m.—Canadian Press News.
- 7.35 p.m.—Sunset Silhouettes with the Garnet Trowell Ensemble
- 8.00 p.m.—Rex Battle With His Orch., from Toronto.
- 8.15 p.m.—Presenting: Lila Valiant, soprano.
- 8.30 p.m.—Young Tim, children's serial direction of Edgar Stone.
- 8.45 p.m.—"A Quarter To Eight," variety show, from Windsor.
- 9.00 p.m.—Show Shop Songs, instrumental and vocal ensemble, from Saint John.
- 9.30 p.m.—Ben Kite's Varieties, an exchange from Detroit, U.S.
- 10.00 p.m.—C'est Rendezvous, modern vocal ensemble and Orch.
- 10.30 p.m.—Melodic Strings.
- 11.00 p.m.—The Youngbloods of Beaver Bend, rural sketch.
- 11.30 p.m.—Geoffrey Waddington with His Royal York Orchestra.
- 11.45 p.m.—Canadian Press News Bulletin and Weather Forecast

CHSJ—Saint John—1120k.

- 6.00 a.m.—Weather Forecast.
- 7.45 a.m.—Recordings.
- 7.50 p.m.—Weather News; Music.
- 8.15 a.m.—"Thoughts For Today."
- 8.30 a.m.—Musical Program.
- 10.00 a.m.—"Hour of Good Cheer."
- 11.00 a.m.—Community Dailies.
- 11.30 a.m.—Moods Musicales.
- 12 noon.—Musical Program.
- 12.15 p.m.—Wassons' Musical Program.
- 12.30 p.m.—Ideal Stores' Ltd., music.
- 12.45 p.m.—Driscolls' Program.
- 1.00 p.m.—Weather; Recordings.
- 1.15 p.m.—Bustin's Fine Furniture.
- 2.00 p.m.—Rex Battle's Orch., Toronto
- 4.00 p.m.—"On the Air."
- 5.00 p.m.—News. Musical Program.
- 5.30 p.m.—Recordings.
- 6.00 p.m.—"Lucky," Emerson Bros.
- 6.10 p.m.—Capitol Theatre News.
- 6.15 p.m.—Musical Program.
- 6.45 p.m.—J. Marcus "Nemises Inc."
- 6.50 p.m.—Recordings.
- 7.00 p.m.—Tuberculosis Talk.
- 7.20 p.m.—Musical Program.
- 7.30 p.m.—to 12.00 mid.—CRC Programs
- 9.00 p.m.—Show Shop Songs to CRC.

CFNB—Fredericton—550k.

- 8.00 a.m.—Musical Clock.
- 8.30 a.m.—M. M. A. Talk.
- 8.35 a.m.—"The Listening Post."
- 9.00 a.m.—Birthdays Program.
- 9.15 a.m.—Popular Songs.
- 9.30 a.m.—Maytag Melodies.
- 10.00 a.m.—Concert Period.
- 10.30 a.m.—The Veiled Lady of Mystery
- 10.45 a.m.—Enterprise Foundry Prog.
- 11.00 a.m.—Happy Warrior Hour.
- 12 noon.—Purina Program.
- 12.15 p.m.—Building Products' Prog.
- 12.30 p.m.—Sherwin-Williams' Musicale.
- 1.00 p.m.—Frigidaire Program.
- 1.30 p.m.—Marconi Radio Hour.
- 2.30 p.m.—Strings and Vocalist.
- 4.30 p.m.—Music Box Revue.
- 5.00 p.m.—Monitor News Bulletins.
- 5.30 p.m.—Dance Music.
- 5.45 p.m.—The Veiled Lady of Mystery
- 6.00 p.m.—Organ Reveries.
- 6.15 p.m.—Canada Cement Program.
- 6.30 p.m.—Robin Hood's Merry Men.
- 6.45 p.m.—MacDonald Program.
- 7.00 p.m.—News Bulletins.
- 7.10 p.m.—Real Life Drama.
- 7.15 p.m.—Souvenirs in Rhythm.
- 7.30 p.m.—to 12.00 mid.—Canadian Radio Commission Programs
- See details top of 1st col.

CKCW—Moncton—1370k.

- 8.00 a.m.—Musical Program.
- 8.15 a.m.—News.
- 8.30 a.m.—Devotional Period.
- 8.45 a.m.—Organ Melodies.
- 9.00 a.m.—Popular Music Half-Hour.
- 12 noon.—Musical Program.
- 12.15 p.m.—Jack Grainger.
- 12.30 p.m.—Popular Music.
- 1.00 p.m.—Noon-Day Musicale.
- 5.00 p.m.—Musical Program.
- 6.00 p.m.—Concert Hour.
- 7.00 p.m.—Popular Music.
- 4.30 p.m.—Terri La Franconi, tenor.
- 7.30 p.m.—to 12.00 mid.—CRC Programs
- See details top of 1st col.

LOG OF STATIONS

MARITIME PROVINCES—

- CHSJ—SAINT JOHN—1120k.
- CFNB—FREDERICTON—550k.
- CKGW—MONCTON—1370k.
- CHNS—HALIFAX—930k.
- CJCB—SYDNEY—1240k.
- CFCY—CHARLOT'TOWN—630k.
- CHCK—CHARLOT'TOWN—1310k.
- CHGS—SUMMERSIDE—1450k.

UPPER CANADIAN—

- CFCF—MONTREAL—600k.
- CKAC—MONTREAL—730k.
- CRCM—MONTREAL—910k.
- CHNC—NEW CARLISLE—1210k.
- CFRE—TORONTO—690k.
- CRCT—TORONTO—840k.
- CKLW—WINDSOR—1030k.

UNITED STATES—

- WPG—ATLANTIC CITY—1100k.
- WBAL—BALTIMORE—1060k.
- WLEZ—BANGOR—620k.
- WBZ—BOSTON—990k.
- WEEI—BOSTON—590k.
- WNAC—BOSTON—1230k.
- WGR—BUFFALO—550k.
- WLW—CINCINNATI—700k.
- WTAM—CLEVELAND—1070k.
- WJR—DETROIT—750k.
- WTIC—HARTFORD—1060k.
- WOR—NEWARK—710k.
- WLWL—NEW YORK—1100k.
- WCAU—PHILADELPHIA—1170k.
- KDKA—PITTSBURGH—980k.
- WCSH—PORTLAND—940k.
- WGY—SCHENECTADY—840k.

CHNS—Halifax—930k.

- 10.00 a.m.—Morning Devotions.
- 10.15 a.m.—Musical Program.
- 10.45 a.m.—News Review.
- 11.00 a.m.—Mrs. Dexter's Radio Hour.
- 12 noon.—Phinney's Victor Program.
- 12.15 p.m.—Syncoated Spots.
- 12.30 p.m.—Crazy Water Crystallizers.
- 12.45 p.m.—News Bulletin.
- 1.00 p.m.—Time; Market Reports, etc.
- 1.15 p.m.—Oxydol's Own Ma Perkins.
- 5.30 p.m.—Uncle Mel.
- 6.00 p.m.—Time. Music; Services.
- 6.25 p.m.—Horoscope; Services.
- 6.30 p.m.—Market Reports.
- 6.45 p.m.—The Fireside Hour.
- 7.00 p.m.—Time. Film Flashes.
- 7.30 p.m.—to 12.00 mid.—CRC Programs
- See details top of 1st Col.

COSMAN, "THE SIGN MAN"

269 Union Street :: Saint John, N. B.

CKIC—Wolfville—1010k.

- 12 noon.—Studio Program.
- 6.00 p.m.—Studio Program.

CJLS—Yarmouth—228.9

- 10.00 a.m.—Morning Devotional.
- 10.20 a.m.—Organ Studies.
- 10.45 a.m.—Woman's Forum.
- 11.30 a.m.—CJLS Program.
- 12 noon.—Grand Hotel Program.
- 12.30 p.m.—News; Bait Reports.
- 12.45 p.m.—Fisherman's Broadcast.
- 1.00 p.m.—Weather.
- 5.30 p.m.—Uncle Bob and the Kiddies.
- 6.00 p.m.—Robin Hood and His Men.
- 6.15 p.m.—The Drifters.
- 6.30 p.m.—Majestic Theatre.
- 6.45 p.m.—"Down Melody Lane."
- 7.00 p.m.—Gateway Program.

CFCY—Charlottetown—630k.

- 11.00 a.m.—Woman's Hour.
- 12 noon.—Musical Program.
- 12.31 p.m.—Stock Quotations.
- 12.40 p.m.—Home Forum Program.
- 1.00 p.m.—Luncheon Program.
- 5.00 p.m.—Outports Program.
- 6.00 p.m.—Davis & Lawrence Co.
- 6.30 p.m.—Sleepy Town Express.
- 6.45 p.m.—Huges and Edwards.
- 7.00 p.m.—Stock Quotations.
- 7.25 p.m.—Ironized Yeast.
- 7.30 p.m.—to 12.00 mid.—CRC Programs
- See details top of 1st Col.
- 9.00 p.m.—Educational Talk.

Charming Joan



JOAN BLAINE
is heard in "A Tale of Today" over the WJZ network every Monday at 10.30 p.m., A.S.T.

WJZ—New York—760k.

- NBC BLUE Network—WGY (Schenectady), WEEI (Boston), WTAM (Cleveland). See Log top 2nd col.
- 3.30 p.m.—NBC Music Guild.
- 4.00 p.m.—Roy Campbell's Royalists.
- 4.15 p.m.—The Wise Man.
- 4.30 p.m.—Beatrice Mack, soprano.
- 4.45 p.m.—King's Jesters, quartette.
- 5.00 p.m.—Betty and Bob, sketch.
- 5.15 p.m.—Songs and Stories.
- 5.30 p.m.—"Let's Talk It Over."
- 6.00 p.m.—Ross Graham, baritone.
- 6.15 p.m.—Junior Radio Journal.
- 6.30 p.m.—The Singing Lady.
- 6.45 p.m.—Little Orphan Annie, drama.
- 7.00 p.m.—Esso News Reporter.
- 7.05 p.m.—U. S. Army Band Concert.
- 7.30 p.m.—Press-Radio News Service.
- 7.35 p.m.—King's Guard, quartette.
- 7.45 p.m.—Lowell Thomas, news.
- 8.00 p.m.—Dinner Concert, organ.
- 8.15 p.m.—Capt. Tim's Adventures.
- 8.30 p.m.—Lum and Abner, comedy.
- 8.45 p.m.—Lois Ravel, songs.
- 9.00 p.m.—Fibber McGee and Molly.
- 9.30 p.m.—Evening in Paris.
- 10.00 p.m.—Sinclair's Greater Minstrels.
- 10.30 p.m.—Princess Pat Revue.
- 11.00 p.m.—Ray Knight's Cuckoo Hour.
- 11.30 p.m.—Music in the Russ Morgan Manner.
- 12.00 mid.—Esso News Reporter.
- 12.05 a.m.—Dorothy Lamour, soprano.
- 12.15 a.m.—Ink Spots, Negro quartette.
- 12.30 a.m.—Ray Noble and His Orch.
- 1.00 a.m.—Shandor, the violinist.
- 1.05 a.m.—Maison Russe Program.
- 1.30 a.m.—Griff Williams' Orchestra.

WEAF—New York—660k.

- NBC RED Network—WBAL (Baltimore), WBZ (Boston), WLW (Cincinnati), WTIC (Hartford), KDKA (Pittsburgh). See Log top 2nd col.
- 4.00 p.m.—"Forever Young," drama.
- 4.15 p.m.—Ma Perkins, drama.
- 4.30 p.m.—Vic and Sade, comedy.
- 4.45 p.m.—The O'Neills, drama.
- 5.00 p.m.—Woman's Radio Review.
- 5.30 p.m.—"Girl Alone," drama.
- 5.45 p.m.—Grandpa Burton, humor.
- 6.00 p.m.—Al Pearce and His Gang.
- 6.30 p.m.—Tom Mix Adventures.
- 6.45 p.m.—James Wilkinson, baritone.
- 7.00 p.m.—Flying Time.
- 7.15 p.m.—Esso News Reporter.
- 7.30 p.m.—Connie Gates, songs.
- 7.30 p.m.—Press-Radio News Service.
- 7.35 p.m.—The Rhythm Parade.
- 7.45 p.m.—Billy and Betty.
- 8.00 p.m.—Amos 'n' Andy, comedy.
- 8.15 p.m.—Uncle Ezra, comedy skit.
- 8.30 p.m.—Edwin C. Hill, news.
- 8.45 p.m.—Education in the News.
- 9.00 p.m.—Hammerstein's Music Hall.
- 9.30 p.m.—"Voice of Firestone," with Nelson Eldy, baritone.
- 10.00 p.m.—A & P Gypsies, music.
- 10.30 p.m.—Vict's Opera House.
- 11.00 p.m.—Carnation Milk Program.
- 11.30 p.m.—National Radio Forum.
- 12.00 mid.—Enoch Light and His Orch.
- 12.30 a.m.—Esso News Reporter.
- 12.35 a.m.—Magnolia Blossoms.
- 1.00 a.m.—Benny Goldman's Orchestra.
- 1.30 a.m.—Stan Wood with His Orch.

WABC—New York—860k.

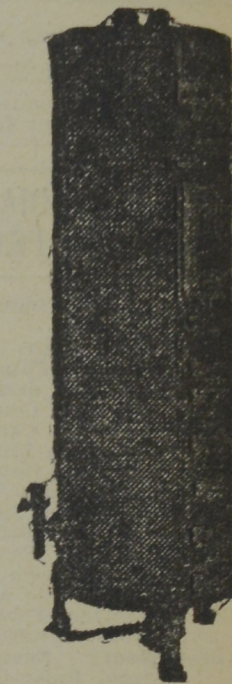
- Columbia CBS chain—WCAU (Philadelphia), WGR (Buffalo), WNAC (Boston). See Log at top 2nd col.
- 3.00 p.m.—Between the Book-Ends.
- 3.15 p.m.—Happy Hollow, drama.
- 3.30 p.m.—American School of the Air.
- 4.00 p.m.—Manhattan Matinee.
- 4.30 p.m.—Hoosier Hop.
- 5.00 p.m.—Commercial Comment.
- 5.30 p.m.—Chicago Variety Hour.
- 5.45 p.m.—Tea at the Ritz.
- 6.00 p.m.—Terry and Ted Adventures.

... 50 to 85 Gallons of Hot Water Daily with a

THRIFT

Automatic GAS Hot Water Heater

Absolutely no attention required. You may have at your convenience 50 to 85 gallons of HOT WATER DAILY and at OUR SPECIAL MONTHLY FLAT RATES. This Heater is sold on very convenient terms by—



New Brunswick Power Co.

ASSURED

Saint John, N. B.

SERVICE

- 6.15 p.m.—Patti Chapin, songs.
- 6.30 p.m.—All-American Boy, drama.
- 6.45 p.m.—The Goldbergs, drama.
- 7.00 p.m.—Buck Rogers in the 25th Century (fantastic).
- 7.15 p.m.—Bobby Benson, Sunny Jim
- 7.30 p.m.—Press-Radio News Service.
- 7.35 p.m.—"Vanished Voices," musical and dramatic.
- 8.00 p.m.—Myrt and Marge, drama.
- 8.15 p.m.—Ted Husing and the Charlotiers.
- 8.30 p.m.—"Singin' Sam."
- 8.45 p.m.—Boake Carter, news.
- 9.00 p.m.—Guy Lombardo's Orchestra
- 9.30 p.m.—Pick and Pat, drama.
- 10.00 p.m.—Lux Radio Theatre.
- 11.00 p.m.—Wayne King and His Orch
- 11.30 p.m.—To be announced.
- 11.45 p.m.—Clyde Barrie, baritone, with Concert Orchestra.
- 12.00 mid.—Jack Denny and His Orch
- 12.30 a.m.—Vincent Lopez's Orchestra
- 1.00 a.m.—Tom Dorsey and His Orch.

get 35 cents a yard for weaving and 20 cents a pound is paid for the unwashed wool. The greatest number of yards any one woman has woven in a day is 17. No difficulty was found in marketing the products. Miss Mowatt believes there are many other staple commodities that could be produced on the farms.

The Charlotte County Craft industries are carried on chiefly in the country homes and farm-houses among the hills and ridges of Charlotte County. This region was one of the earliest settled parts in this part of America and the people who now reside there have been brought up amongst the old traditions, and wild and beautiful surroundings.

The work of the Cottage Craft was started some years ago with the idea of providing for the visiting strangers articles for purchase that would be wholly characteristic of the country, that they might take away with them some happy reminder of the land they came to see.

There has been revived to some extent the traditional industries in which simple materials, which can be made at home or bought at the country store, are used and thus is told the story of the farm life of the Maritimes.

Among the articles produced and offered for sale in the Craft store in St. Andrews are hooked rugs, hand-woven blankets, embroidered handbags, and tweeds for suits and coats.

What is being done in Charlotte County can be done in other counties and these home industries could be extended to other lines as suggested by Miss Mowatt. There are instances where farm people are producing articles of furniture and other things in which native woods are used. There is food for thought in these suggestions and the managements of the different exhibitions might stimulate interest in these farm industries by offering special inducements for exhibits.

Farm Factories Suggested As Solution Of Some Problems

(Continued from Page 17)

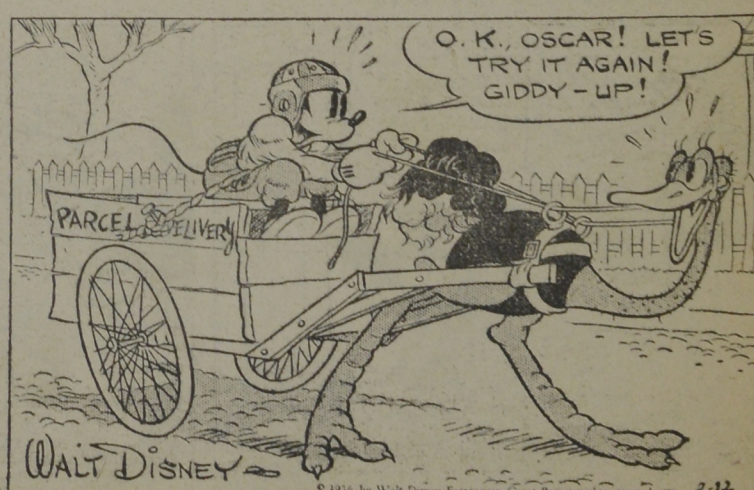
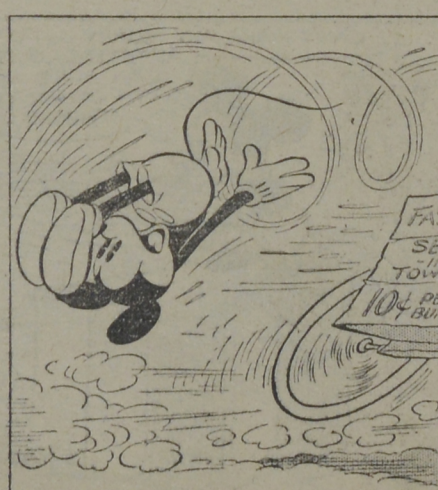
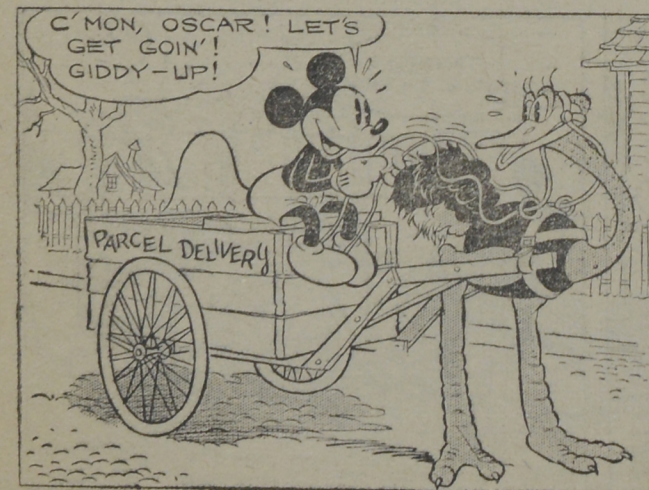
spun cloth and she believes that this industry could be extended to other counties.

The Dominion Bureau of Statistics sees possibilities among this line and in one of its reports says: An ancient industry in which Canadian pioneers were skilled was home spinning and weaving. Those were the days when families had to be able to do many things that are left to the factories in the present day. As the country became more populated, the spinning wheel and the home-made loom fell into general disuse, and the wheel became prized as a relic, but in the last few years Canadian homespun has been staging a come-back.

The reason for the resumption on a fairly large scale of this old domestic activity is attributed by the Department of Agriculture to the low price paid for wool and the necessity of farmers to reduce their expenditure during the difficult times. It is estimated that Canadians are now spinning and weaving into cloth at home five million pounds of wool produced on their own farms. So the spinning wheel is coming back again.

In Charlotte County there was produced in 1935 more than 4,500 yards of cloth, besides blankets and other articles. The people

MICKEY MOUSE



HOLD THAT LINE!

By WALT DISNEY