

# RADIO PROGRAMS

THURSDAY, February 20, 1936

THE TIME GIVEN IN ALL PROGRAMS IS ATLANTIC STANDARD  
"The Broadcaster" cannot be responsible for errors or omissions in the following programs or for the last-minute changes by stations or sponsors.

## TODAY'S CANADIAN RADIO COMMISSION PROGRAM

7.00 p.m.—Overseas Program, BBC re-broadcast, from Ottawa.  
7.30 p.m.—Canadian Press News.  
8.00 p.m.—Luigi Romanelli and His Orchestra.  
8.15 p.m.—The Cossack, Adolf Wantroff, baritone.  
8.30 p.m.—Young Tim, children's serial, with Edgar Stone.  
8.45 p.m.—Edgar Herring's Instrumental group, from Montreal.  
9.00 p.m.—The Plainsmen, orchestra, soloist, male quartette.  
9.20 p.m.—Romance and Dividends in Agriculture, talk.  
9.30 p.m.—Chamber Music, Montreal.  
10.00 p.m.—League of Nations' Third Annual Project: "Policing the World."  
10.30 p.m.—Woodunne Trio.  
10.45 p.m.—Gentleman Jim Himself.  
11.00 p.m.—For You, Madame, orchestra and ladies' forum.  
11.30 p.m.—University Lecture by F. G. Soward, Univ. of B. C.  
11.45 p.m.—Canadian Press News Bulletin and Weather Forecast

### CHSJ—Saint John—1120k.

6.00 a.m.—Weather Forecast.  
7.45 a.m.—Recordings.  
7.50 p.m.—Weather; News; Music.  
8.15 a.m.—"Thoughts For Today."  
8.30 a.m.—Musical Program.  
9.45 a.m.—Mason Remedies, "Raymer"  
10.00 a.m.—"Hour of Good Cheer."  
11.00 a.m.—Fry-Cadbury Storyette.  
11.05 a.m.—Community Doings.  
11.30 a.m.—Moods Musicales.  
12 noon.—Musical Program.  
12.15 p.m.—Wassons' Musical Program.  
12.30 p.m.—Ideal Stores' Program.  
12.45 p.m.—Driscolls' Program.  
1.00 p.m.—Weather; Musical Program  
2.30 p.m.—Rex Battle's Orch., Toronto  
4.00 p.m.—"On the Air."  
5.00 p.m.—News. Musical Program.  
5.30 p.m.—Musical Program.  
5.55 p.m.—American Clothing House.  
6.00 p.m.—"Lucky," Emerson Bros.  
6.10 p.m.—Capitol Theatre News.  
6.15 p.m.—Musical Program.  
7.15 p.m.—Robin Hood Mills Ltd.  
7.30 p.m.—to 12.00 mid.—Canadian Radio Commission Programs (Details top of 1st col.)

### CFNB—Fredericton—550k.

8.00 a.m.—Musical Clock.  
8.30 a.m.—M. M. A. Talk.  
8.35 a.m.—"The Listening Post."  
9.00 a.m.—Birthdays Program.  
9.30 a.m.—Merry Melodies.  
10.00 a.m.—Concert Period.  
10.30 a.m.—The Veiled Lady of Mystery  
10.45 a.m.—Enterprise Foundry Prog.  
11.00 a.m.—Happy Warrior Hour.  
12 noon.—Purina Program.  
12.15 p.m.—Building Products' Prog.  
12.30 p.m.—Sherwin-Williams' Musicales.  
1.00 p.m.—Frigidaire Program.  
1.30 p.m.—Marconi Radio Hour.  
2.30 p.m.—Royal York Orch., Toronto  
4.30 p.m.—With the Old Masters.  
5.00 p.m.—Monitor News Bulletins.  
5.30 p.m.—Strings.  
5.45 p.m.—The Veiled Lady of Mystery  
6.00 p.m.—Musical Spots.  
6.15 p.m.—Canada Cement Program.  
6.30 p.m.—Burgess Battery Program.  
6.45 p.m.—MacDonald Program.  
7.00 p.m.—News Bulletins.  
7.15 p.m.—Souvenirs in Rhythm.  
7.30 p.m.—to 12.00 mid.—CRC Programs

### CKCW—Moncton—1370k.

8.00 a.m.—Musical Program.  
8.15 a.m.—News.  
8.30 a.m.—Devotional Period.  
8.45 a.m.—Organ Melodies.  
9.00 a.m.—Popular Music Half-Hour.  
12 noon.—Musical Program.  
12.30 p.m.—Popular Music.  
12.15 p.m.—Jack Grainger.

## LOG OF STATIONS

### MARITIME PROVINCES—

CHSJ—SAINT JOHN—1120k.  
CFNB—FREDERICTON—550k.  
CKGW—MONCTON—1370k.  
CHNS—HALIFAX—930k.  
CJCB—SYDNEY—1240k.  
CFCY—CHARLOT'TOWN—630k.  
CHCK—CHARLOT'TOWN—1310k.  
CHGS—SUMMERSIDE—1450k.

### UPPER CANADIAN—

CFCF—MONTREAL—600k.  
CKAC—MONTREAL—730k.  
CRCM—MONTREAL—910k.  
CHNC—NEW CARLISLE—1210k.  
CFRB—TORONTO—690k.  
CRCT—TORONTO—840k.  
CKLW—WINDSOR—1030k.

### UNITED STATES—

WPG—ATLANTIC CITY—1100k.  
WBAL—BALTIMORE—1060k.  
WLBZ—BANGOR—620k.  
WBZ—BOSTON—990k.  
WEEI—BOSTON—590k.  
WNAC—BOSTON—1230k.  
WGR—BUFFALO—550k.  
WLW—CINCINNATI—700k.  
WTAM—CLEVELAND—1070k.  
WJR—DETROIT—750k.  
WTIC—HARTFORD—1060k.  
WOR—NEWARK—710k.  
WLWL—NEW YORK—1100k.  
WCAU—PHILADELPHIA—1170k.  
KDKA—PITTSBURGH—980k.  
WCHS—PORTLAND—940k.  
WGY—SCHENECTADY—840k.

5.00 p.m.—Musical Program.  
6.00 p.m.—Concert Hour.  
7.00 p.m.—The Billikins.  
7.15 p.m.—Real Life Dramas.  
7.30 p.m.—to 12.00 mid.—CRC Programs  
1.00 p.m.—Neon-Day Musicales.

### CHNS—Halifax—930k.

10.00 a.m.—Morning Devotions.  
10.15 a.m.—Musical Program.  
10.40 a.m.—Fry-Cadbury Program.  
10.45 a.m.—News Review.  
11.00 a.m.—Mrs. Dexter's Radio Hour.  
12 noon.—Phinney's Victor Program.  
12.15 p.m.—Services.  
12.30 p.m.—Cousins' Radio Parade.  
12.45 p.m.—News Bulletin.  
1.00 p.m.—Time; Market Reports, etc.  
1.15 p.m.—Oxydol's Own Ma Perkins.  
5.30 p.m.—Uncle Mel.  
6.00 p.m.—Time. Music; Services.  
6.25 p.m.—Horoscope; Services.  
6.30 p.m.—Market Reports.  
7.30 p.m.—to 12.00 mid.—CRC Programs  
See details top of 1st col.  
8.00 p.m.—Boston American Program.  
8.15 p.m.—M. B. Fineberg's Program.

### CKIC—Wolfville—1010k.

12 noon.—Studio Program.  
6.00 p.m.—Studio Program.

### CJLS—Yarmouth—228.9

10.00 a.m.—Morning Devotional.  
10.20 a.m.—Organ Studies.  
10.45 a.m.—CJLS Half-Hour.  
12 noon.—Grand Hotel Program.  
12.15 p.m.—Valetor Program.  
12.30 p.m.—News; Bait Reports.  
12.45 p.m.—Fisherman's Broadcast.  
1.00 p.m.—Weather.  
5.30 p.m.—Uncle Bob and the Kiddies.  
6.00 p.m.—Time Signals; The Drifters.  
6.15 p.m.—Wally Gates and His Orch.  
6.30 p.m.—Majestic Theatre.  
6.45 p.m.—Pentecostal Pair.  
7.15 p.m.—Wally Gates' Orchestra.

### CFCY—Charlottetown—630k.

11.00 a.m.—Woman's Hour.  
12 noon.—Peerless Beverages.  
12.15 p.m.—Prowse Bros., Ltd. Program.  
12.31 p.m.—Stock Quotations.  
12.40 p.m.—Home Forum Program.  
5.00 p.m.—Outports Program.  
6.00 p.m.—Robin Hood and His Men.  
6.15 p.m.—Red Rose Tea Program.  
6.30 p.m.—Sleepy Town Express.  
6.45 p.m.—Westinghouse Program.  
7.00 p.m.—Stock Quotations.

## Takes It Easy



The microphone doesn't awe BING CROSBY. Very much at home at NBC's Hollywood studios, Bing is shown here in three candid camera attitudes rehearsing for his Kraft program, heard over an NBC-WEAF network each Thursday at 11.00 p.m., A.S.T.

7.15 p.m.—Soullis Typewriter Co.  
7.30 p.m.—to 12.00 mid.—CRC Programs  
See details top of 1st Col.

## COSMAN, "THE SIGN MAN"

269 Union Street :: Saint John, N. B.

### WJZ—New York—760k.

NBC BLUE Network—WGY (Schenectady), WEEI (Boston), WTAM (Cleveland). See Log top 2nd col.

1.30 p.m.—National Home-Farm Hour.  
2.30 p.m.—Julia Glass, pianist, with Phyllis Kraeuter, 'cellist.  
2.45 p.m.—Dot and Will, drama.  
3.00 p.m.—Words and Music.  
3.30 p.m.—NBC Music Guild.  
4.15 p.m.—Rochester Philharmonic Orchestra.

5.00 p.m.—Betty and Bob, drama.  
5.15 p.m.—Gene Arnold's Ranch Boys.  
5.30 p.m.—NBC Radio Guild.  
6.30 p.m.—The Singing Lady.  
6.45 p.m.—Little Orphan Annie, drama  
7.05 p.m.—James Wilkinson, baritone.  
7.15 p.m.—Animal Close-Ups.  
7.30 p.m.—Press-Radio News Service.  
7.35 p.m.—Muriel Wilson, soprano.  
7.45 p.m.—Lowell Thomas, news.  
8.00 p.m.—"Easy Aces," drama.  
8.15 p.m.—"Nine To Five," drama.  
8.30 p.m.—Lum and Abner, comedy.  
8.45 p.m.—Omega Program, with Phil Cook, Ladd Trio, White.

9.00 p.m.—Music Is My Hobby.  
9.15 p.m.—NBC String Symphony.  
10.00 p.m.—Death Valley Days, drama.  
10.30 p.m.—America's Town Meetings.  
11.30 p.m.—NBC Cinema Theatre.  
12.05 a.m.—Emil Coleman's Orchestra.  
12.30 a.m.—Ben Bernie and His Orch.  
1.00 a.m.—Shandor, the violinist.  
1.00 a.m.—Ruby Newman's Orchestra.

## BUY NEW BRUNSWICK-MADE PRODUCTS

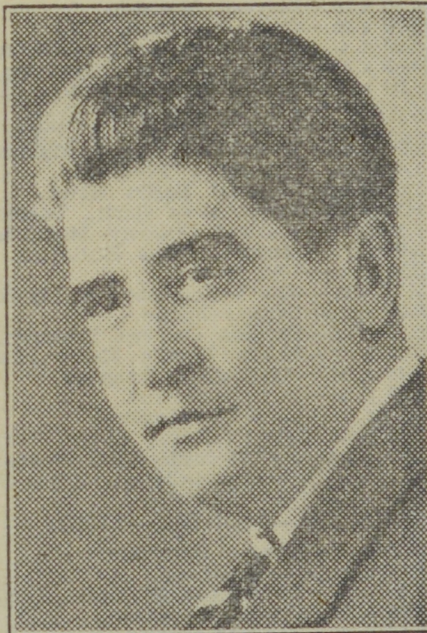
QUALITY  
**foods**  
that you'll enjoy!

**S & F Brand**  
**BOLOGNA**  
**COOKED HAM**  
**SAUSAGES**

These and our other Delicious Pork Foods are unexcelled in Quality and Flavor and are Reasonably Priced at Your Dealers.

**SLIPP & FLEWELLING, LIMITED**  
PORK PACKERS AT SAINT JOHN

## Gospel Singer



EDWARD MacHUGH.  
NBC's Gospel singer, who is heard every day except Sunday at 11.15 a.m., A.S.T., over WJZ.

### WEAF—New York—660k.

NBC RED Network—WBAL (Baltimore), WBZ (Boston), WLW (Cincinnati), WTIC (Hartford), KDKA (Pittsburgh). See Log top 2nd col.  
5.00 p.m.—Woman's Radio Review.  
5.30 p.m.—"Girl Alone," drama.  
5.45 p.m.—Tintype Tenor.  
6.30 p.m.—The Birth of a Song.  
7.00 p.m.—Flying Time, aviation.

7.20 p.m.—Connie Gates, contralto.  
7.30 p.m.—Press-Radio News Service.  
7.35 p.m.—John B. Kennedy, talk.  
7.45 p.m.—Billy and Betty, sketch.  
8.00 p.m.—Amos 'n' Andy, skit.  
8.15 p.m.—"Popeye the Sailor."  
8.30 p.m.—Martha Mears, songs.  
8.45 p.m.—Life Studies, Tom Powers.  
9.00 p.m.—Fleischmann Hour, with Rudy Vallee and Orch.  
10.00 p.m.—Maxwell House Show Boat, with Lanny Ross, direc.  
11.00 p.m.—Bing Crosby with Jim Dorsey's Orchestra.  
12.00 mid.—Harold Nagel's Orchestra.  
12.15 a.m.—Phil Levant's Orchestra.  
12.35 a.m.—The Minneapolis Symphony Orchestra.  
12.30 a.m.—Esso News Reporter.  
1.30 a.m.—Sammy Kaye's Orchestra.

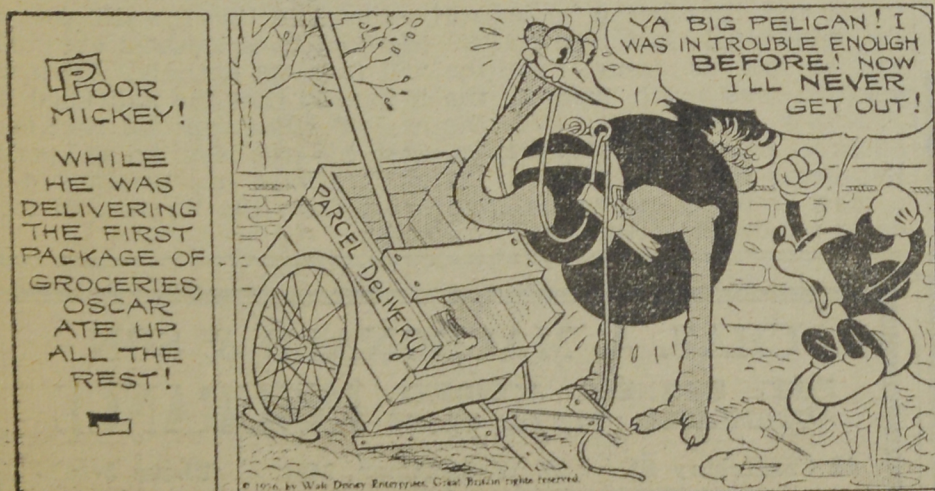
### WABC—New York—860k.

Columbia CBS chain—WCAU (Philadelphia), WGR (Buffalo), WNAC (Boston). See Log at top 2nd col.  
5.00 p.m.—Salvation Army Staff Band.  
5.15 p.m.—Howells and Wrights.  
5.30 p.m.—Greetings from Kentucky.  
6.00 p.m.—Terry and Ted Adventures.  
6.15 p.m.—Jimmy Farrell, songs.  
6.30 p.m.—All-American Boy.  
6.45 p.m.—The Goldbergs, drama.  
7.00 p.m.—Vocals by Verrill.  
7.15 p.m.—Parade of Youth.  
7.30 p.m.—Press-Radio News Service.  
7.35 p.m.—George Hall and His Orch.  
7.45 p.m.—Imperial Hawaiian Band.  
8.00 p.m.—Myrt and Marge, drama.  
8.15 p.m.—Krueger Musical Toast.  
8.30 p.m.—Kate Smith's Coffee Time.  
8.45 p.m.—Boake Carter, news.  
9.00 p.m.—Harv and Esther, comedy.  
9.30 p.m.—"The March of Time."  
10.00 p.m.—Camel Caravan.  
10.30 p.m.—CBS Dramatic Guild.  
11.00 p.m.—Held's Brigadiers.  
11.30 p.m.—Phil Cook, Just Another Amateur.  
12.00 mid.—Guy Lombardo and His Royal Canadians.  
12.30 a.m.—Isham Jones and His Orch.  
1.00 a.m.—George Olsen and His Orch.

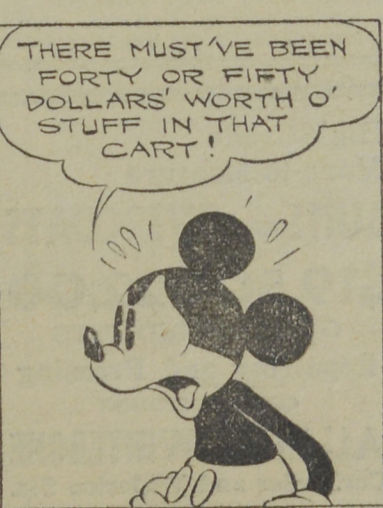
## ST. JOHN DRY DOCK & SHIPBUILDING CO., LTD.

SAINT JOHN, N. B.  
**SHIP REPAIRS OF ALL KINDS.**  
**STRUCTURAL STEEL.**  
DESIGNERS AND ERECTORS OF ALL CLASSES OF STRUCTURAL STEEL WORK

## MICKEY MOUSE



## HIS DEBT TO SOCIETY



## By WALT DISNEY.

