

RADIO PROGRAMS

FRIDAY, February 7, 1936

THE TIME GIVEN IN ALL PROGRAMS IS ATLANTIC STANDARD
 "The Broadcaster" cannot be responsible for errors or omissions in the following programs or for the last-minute changes by stations or sponsors.

TODAY'S CANADIAN RADIO COMMISSION PROGRAM

- 6.45 p.m.—Stock Market Reports.
- 7.00 p.m.—Overseas Program. BBC re-broadcast, from Ottawa.
- 7.30 p.m.—Canadian Press News.
- 7.35 p.m.—By Candlelight, with Gareth Trowell String Ensemble.
- 8.00 p.m.—Rex Battle and His Concert Orchestra, from Toronto.
- 8.15 p.m.—Presenting: Jeanne Desjardins, soprano.
- 8.30 p.m.—Young Tim, children's serial with Edgar Stone.
- 8.45 p.m.—Surprise Box, variety.
- 9.00 p.m.—Live, Laugh and Love, orchestra with soloists.
- 9.30 p.m.—"Anything Goes," Marjorie Payne's Orchestra, Halifax
- 10.00 p.m.—University Debate, Bishops vs. Dalhousie.
- 10.30 p.m.—Canadian Concert Hall of the Air, with Andre Mathieu, pianist, and Orchestra under J. J. Gagnier.
- 11.00 p.m.—"Up-to-the-Minute," news, music, sports, etc.
- 11.30 p.m.—Gene Fogarty and His Orchestra for Dancing.
- 11.45 p.m.—Canadian Press News Bulletin and Weather Forecast

CHSJ—Saint John—1120k.

- 6.00 a.m.—Weather Forecast.
- 7.45 a.m.—Recordings.
- 7.50 p.m.—Weather; News; Music.
- 8.15 a.m.—"Thoughts For Today."
- 8.30 a.m.—Musical Program.
- 8.45 a.m.—Mason Remedies, "Raymar."
- 10.00 a.m.—"Hour of Good Cheer."
- 11.05 a.m.—Community Doings.
- 11.30 a.m.—Moods Musicales.
- 12 noon—Musical Program.
- 12.05 p.m.—Clint Regan's Boys' Shop.
- 12.15 p.m.—Wassons' Musical Program
- 12.30 p.m.—Ideal Stores' Musicales.
- 12.45 p.m.—Driscolls' Program.
- 1.00 p.m.—Weather. Recordings.
- 1.15 p.m.—Bustin's Fine Furniture.
- 1.20 p.m.—Musical Program.
- 2.30 p.m.—Rex Battle's Orch., Toronto
- 4.00 p.m.—"On the Air"
- 5.00 p.m.—News. Musical Program.
- 5.30 p.m.—Musical Program.
- 5.45 p.m.—United Thrift Store Ltd.
- 5.50 p.m.—Musical Program.
- 6.00 p.m.—"Lucky," Emerson Bros.
- 6.10 p.m.—Capitol Theatre News.
- 6.15 p.m.—Musical Program.
- 6.45 p.m.—J. Marcus "Nemises Inc."
- 7.00 p.m.—Simpson's "Easy Chair."
- 7.30 p.m. to 12.00 mid.—Canadian Radio Commission Programs
 See details top of 1st col.
- 8.00 p.m.—Dodd's Radio Short Story.
- 8.15 p.m.—Pacific Dairies' Drama.

COSMAN, "THE SIGN MAN"

265 Union Street :: Saint John, N. B.

CFNB—Fredericton—550k.

- 8.00 a.m.—Musical Clock.
- 8.30 a.m.—M. M. A. Talk.
- 8.35 a.m.—"The Listening Post."
- 9.00 a.m.—Birthday Program.
- 9.15 a.m.—Radio Chain Letter.
- 9.30 a.m.—Maytag Melodies.
- 10.00 a.m.—Concert Period.
- 10.30 a.m.—Piano and Violin.
- 10.45 a.m.—Enterprise Foundry Prog.
- 11.00 a.m.—Happy Warrior Hour.
- 12 noon—Purina Program.
- 12.15 p.m.—Building Products' Prog.
- 12.30 p.m.—Sherwin-Williams' Musicales.
- 1.00 p.m.—Frigidaire Program.
- 1.30 p.m.—Marconi Radio Hour.
- 2.30 p.m.—Royal York Orch., Toronto.
- 4.30 p.m.—Musical Comedy Memories.
- 5.00 p.m.—Monitor News Bulletins.
- 5.30 p.m.—Tea Dance.
- 5.45 p.m.—Band Parade.
- 6.00 p.m.—Dinner Music.
- 6.15 p.m.—Canada Cement Program.
- 6.30 p.m.—Robin Hood's Merry Men.
- 6.45 p.m.—MacDonald Program.
- 7.00 p.m.—News Bulletins.
- 7.10 p.m.—Real Life Drama.
- 7.15 p.m.—Dodd's Radio Short Story.
- 7.30 p.m. to 12.00 mid.—CRC Programs
 See details top of 1st Col.

CKCW—Moncton—1370k.

- 8.00 a.m.—Musical Program.
- 8.10 a.m.—News Items.
- 8.30 a.m.—Devotional Period.
- 8.45 a.m.—Organ Melodies.
- 9.00 a.m.—Popular Music Half-Hour.
- 9.15 a.m.—Home Forum.
- 12 noon—Musical Program.
- 12.15 p.m.—Jack Grainger.
- 1.00 p.m.—Noon-Day Musicales.
- 12.30 p.m.—Popular Music.
- 5.00 p.m.—Musical Program.
- 6.00 p.m.—Concert Hour.
- 7.00 p.m.—Biscuit Boys.
- 7.15 p.m.—Real Life Dramas.
- 7.30 p.m. to 12.00 mid.—CRC Programs

CHAS. A. MACDONALD & SON
 FIRE, SICKNESS, ACCIDENT,
 AUTOMOBILE, PLATE GLASS INSURANCE
 49 Canterbury St. H. W. Kinsman, Mgr. Phone 3-3536

LOG OF STATIONS

MARITIME PROVINCES—

- CHSJ—SAINT JOHN—1120k.
- CFNB—FREDERICTON—550k.
- CKGW—MONCTON—1370k.
- CHNS—HALIFAX—930k.
- CJOB—SYDNEY—1240k.
- CFCY—CHARLOT'TOWN—630k.
- CHCK—CHARLOT'TOWN—1310k.
- CHGS—SUMMERSIDE—1450k.

UPPER CANADIAN—

- CFCF—MONTREAL—600k.
- CKAC—MONTREAL—730k.
- CRCM—MONTREAL—910k.
- CHNC—NEW CARLISLE—1210k.
- CFRB—TORONTO—690k.
- CRCT—TORONTO—840k.
- CKLW—WINDSOR—1030k.

UNITED STATES—

- WPG—ATLANTIC CITY—1100k.
- WBAL—BALTIMORE—1060k.
- WLBZ—BANGOR—620k.
- WEEI—BOSTON—990k.
- WEEI—BOSTON—590k.
- WNAC—BOSTON—1230k.
- WGR—BUFFALO—550k.
- WLW—CINCINNATI—700k.
- WTAM—CLEVELAND—1070k.
- WJR—DETROIT—750k.
- WTIC—HARTFORD—1060k.
- WOR—NEWARK—710k.
- WLWL—NEW YORK—1100k.
- WCAU—PHILADELPHIA—1170k.
- KDKA—PITTSBURGH—990k.
- WCSH—PORTLAND—940k.
- WGY—SCHENECTADY—840k.

New WLW Star



In **ELLIS FRAKES**, talented young Covington, Ky., baritone, E. J. Fitzgerald, WLW music supervisor, believes he has a discovery having the possibilities of becoming one of the outstanding radio finds of the season. He made his first professional appearance at the age of six as boy soprano in St. Paul's Episcopal choir, Cincinnati. Since then he has made guest appearances on radio programs. He holds the distinction of having won the Kentucky Atwater-Kent contests in three of the five years in which he competed. Frakes has already scored successes on such programs as "Music Box Hour" and "Crosley Follies."

CHNS—Halifax—930k.

- 10.00 a.m.—Morning Devotions.
- 10.15 a.m.—Musical Program.
- 10.45 a.m.—News Review.
- 10.55 a.m.—Musical Interlude.
- 11.00 a.m.—Woman's Radio Institute.
- 12 noon—Phinney's Victor Program.
- 12.15 p.m.—Services.
- 12.30 p.m.—Crazy Water Crystalizers.
- 12.45 p.m.—News Bulletin.
- 1.00 p.m.—Time; Market Reports, etc.
- 1.15 p.m.—Oxydol's Own Ma Perkins.
- 2.00 p.m.—Dept. of Education.
- 5.30 p.m.—Uncle Mel.
- 6.00 p.m.—Time. Music; Services.
- 6.25 p.m.—Horoscope; Services.
- 6.30 p.m.—Market Reports.
- 6.45 p.m.—Fireside Hour.

A Dreamer



DOROTHY LAMOUR.

NBC's Dreamer of Songs is heard each Monday, Wednesday and Friday in her own program over WJZ at five minutes after midnight.

- 7.00 p.m.—Birks' Time, Pollyanna.
- 7.30 p.m. to 12.00 mid.—CRC Programs
 (Details top of 1st. col.)

CKIC—Wolfville—1010k.

- 12 noon—Studio Program.
- 6.00 p.m.—Studio Program.

CJLS—Yarmouth—228.9

- 10.00 a.m.—Morning Devotional.
- 10.20 a.m.—Organ Studies.
- 10.45 a.m.—Woman's Forum.
- 11.30 a.m.—CJLS Half-Hour.
- 12 noon—Grand Hotel Program.
- 12.30 p.m.—News; Bait Reports.
- 12.45 p.m.—Fisherman's Broadcast.
- 1.00 p.m.—Weather.
- 5.30 p.m.—Uncle Bob and the Kiddies.
- 6.00 p.m.—Time Signals.
- 6.15 p.m.—Sunset Yodeler.
- 6.30 p.m.—Majestic Theatre.
- 6.45 p.m.—"Down Melody Lane."
- 7.00 p.m.—Chas. E. Dyke.
- 7.15 p.m.—Gateway Four Orchestra.

CFCY—Charlottetown—630k.

- 11.00 a.m.—Woman's Hour.
- 12 noon—Musical Program.
- 12.31 p.m.—Stock Quotations.
- 12.40 p.m.—Home Forum Program.
- 5.00 p.m.—Outports Program.
- 6.00 p.m.—Moore & MacLeod, Ltd.
- 6.15 p.m.—Musical Program.
- 6.30 p.m.—Sleepy Town Express.
- 6.45 p.m.—Hughes & Edwards' Prog.
- 7.00 p.m.—Stock Quotations.
- 7.15 p.m.—Stellar Jewellers.
- 7.25 p.m.—Ironized Yeast.
- 7.30 p.m. to 12.00 mid.—CRC Programs
 (Details top of 1st. col.)

WJZ—New York—760k.

NBC RED Network—WBAL (Baltimore), WBEZ (Boston), WLW (Cincinnati), WTIC (Hartford), KDKA (Pittsburgh). See Log top 2nd col.

- 5.45 p.m.—Strolling Songsters.
- 6.30 p.m.—The Singing Lady.
- 6.45 p.m.—Little Orphan Annie.
- 7.05 p.m.—Animal News Club.
- 7.15 p.m.—Mary Small, songs.
- 7.30 p.m.—Press-Radio News Service.
- 7.35 p.m.—The King's Guard.
- 7.45 p.m.—Lowell Thomas, news.
- 8.00 p.m.—Dinner Concert.
- 8.15 p.m.—Capt. Tim's Adventures.
- 8.30 p.m.—Lum and Abner, comedy.
- 8.45 p.m.—The Young New Yorkers.
- 9.00 p.m.—Irene Rich, musical star.
- 9.15 p.m.—Wendell Hall, red-headed music maker.
- 9.30 p.m.—Kellogg's College Prom.
- 10.00 p.m.—Al Pearce and His Orch.
- 10.30 p.m.—Fred. Waring with His Orch.
- 11.00 p.m.—Nickelodeon, comedy, songs and melodrama.
- 11.30 p.m.—The Other Americas.
- 12.05 a.m.—Dorothy Lamour, soprano.
- 12.15 a.m.—Ink Spots, Negro quartette.
- 12.30 a.m.—Emil Coleman's Orchestra.
- 1.00 a.m.—Shandor, the violinist.
- 1.08 a.m.—Ranny Weeks' Orchestra.
- 1.30 a.m.—Paul Pendarnis' Orchestra.

WEAF—New York—660k.

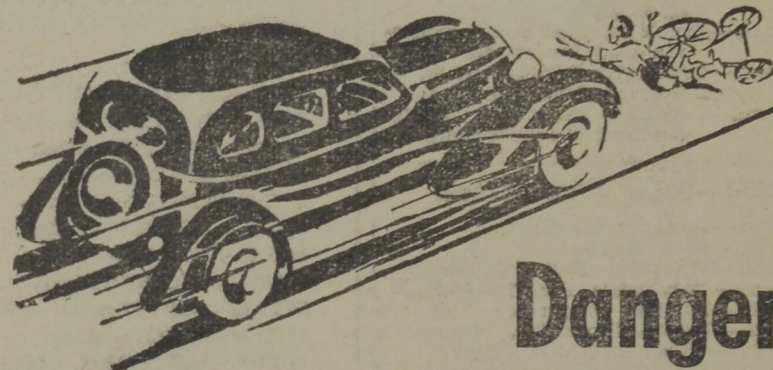
NBC BLUE Network—WGY (Schenectady), WEEI (Boston), WTAM (Cleveland). See Log top 2nd col.

- 6.45 p.m.—Terri La Franconi, tenor.
- 7.00 p.m.—Flying Time.
- 7.20 p.m.—Lee Gordon with His Orch.
- 7.30 p.m.—Press-Radio News Service.
- 7.45 p.m.—Billy and Betty, drama.
- 8.00 p.m.—Amos 'n' Andy, sketch.
- 8.15 p.m.—Uncle Ezra's Radio Station.
- 8.30 p.m.—Human Side of the News.
- 8.45 p.m.—The Fox Fur Trappers.
- 9.00 p.m.—Cities Service Concert Orch. soloist, quartette, orch.
- 10.00 p.m.—"Waltz Time," with Frank Munn, tenor.
- 10.30 p.m.—True Story Hour.
- 11.00 p.m.—The First Nighter, sketch.
- 12.00 mid.—George R. Holmes, news.
- 12.15 a.m.—Phil Levant's Orchestra.
- 12.30 a.m.—Eso News Reporter.
- 12.45 a.m.—Jesse Crawford, organist.
- 1.00 a.m.—Henry Busse and His Orch.
- 1.30 a.m.—Johnny Huntington's Orch.

'SALADA' TEA

is delicious

- | | |
|--|---|
| WABC—New York—860k. | 7.35 p.m.—Blue Flames, quartette. |
| Columbia CBS chain—WCAU (Philadelphia), WGR (Buffalo), WNAC (Boston). See Log at top 1st col (Boston). See Log at top 2nd col. | 7.45 p.m.—Kaltenborn Edits the News. |
| 6.15 p.m.—Buddy Clark, baritone. | 8.00 p.m.—Myrt and Marge, drama. |
| 6.30 p.m.—Jack Armstrong, drama. | 8.15 p.m.—The Minstrel Man. |
| 6.45 p.m.—The Goldbergs, drama. | 8.45 p.m.—Boake Carter, news. |
| 7.00 p.m.—Buck Rogers in the 25th Century (fantastic). | 9.00 p.m.—Flying Red Horse Tavern. |
| 7.15 p.m.—Bobby Benson, Sunny Jim. | 9.30 p.m.—Broadway Varieties. |
| 7.30 p.m.—Press-Radio News Service. | 10.00 p.m.—Hollywood Hotel, drama, etc. |
| | 11.00 p.m.—Richard Himber and Orch. |
| | 11.30 p.m.—Special Symphony Concert. |
| | 12.00 mid.—Louis Armstrong's Orch. |
| | 12.30 a.m.—Guy Lombardo's Orchestra. |
| | 1.00 a.m.—Vincent Lopez's Orchestra. |



Danger

You can never tell when you're going to have to depend on the gripping power of your brakes to protect your own life and the lives of others. For smooth, powerful brakes that will give you complete confidence when on the road always demand—

is nearly always unexpected when driving. Be prepared by having dependable brakes.

MINTEX

TWICE AS SAFE BRAKE LININGS

WOVEN ; MOULDED ; DIE PRESSED ; HALO

A Lining For Every Type of Brake

NEGLECT
 MEANS SHORT LIFE

YOUR BATTERY is much like your body—neglect it and you shorten its life. Our Willard Service Test protects you against battery failure.



FREE ON ANY MAKE OF BATTERY

BATTERY & ELECTRIC SERVICE

90 DUKE STREET
 OFFICIAL SERVICE STATION IN SAINT JOHN CITY

