

# RADIO PROGRAMS

FRIDAY, January 31, 1936

THE TIME GIVEN IN ALL PROGRAMS IS ATLANTIC STANDARD  
 "The Broadcaster" cannot be responsible for errors or omissions in the following programs or for the last-minute changes by stations or sponsors.

## TODAY'S CANADIAN RADIO COMMISSION PROGRAM

- 6.45 p.m.—Stock Market Reports.
- 7.00 p.m.—Overseas Program, BBC re-broadcast, from Ottawa.
- 7.30 p.m.—Canadian Press News.
- 7.35 p.m.—By Candlelight, with Gareth Trowell String Ensemble.
- 8.00 p.m.—Rex Battle and His Concert Orchestra, from Toronto.
- 8.15 p.m.—Presenting: Jeanne Desjardins, soprano.
- 8.30 p.m.—Young Tim, children's serial with Edgar Stone.
- 8.45 p.m.—Surprise Box, variety.
- 9.00 p.m.—Live, Laugh and Love, orchestra with soloists.
- 9.30 p.m.—"Anything Goes," Marjorie Payne's Orchestra, Halifax.
- 10.00 p.m.—University Debate, Bishops vs. Dalhousie.
- 10.30 p.m.—Canadian Concert Hall of the Air, with Andre Mathieu, pianist, and Orchestra under J. J. Gagnier.
- 11.00 p.m.—"Up-to-the-Minute," news, music, sports, etc.
- 11.30 p.m.—Gene Fogarty and His Orchestra for Dancing.
- 11.45 p.m.—Canadian Press News Bulletin and Weather Forecast

### CHSJ—Saint John—1120k.

- 6.00 a.m.—Weather Forecast.
- 7.45 a.m.—Recordings.
- 7.50 p.m.—Weather; News; Music.
- 8.15 a.m.—"Thoughts For Today."
- 8.30 a.m.—Musical Program.
- 9.45 a.m.—Mason Remedies, "Raymar."
- 10.00 a.m.—"Hour of Good Cheer."
- 11.05 a.m.—Community Dotings.
- 11.30 a.m.—Moods Musicales.
- 12 noon—Musical Program.
- 12.05 p.m.—Clint Regan's Boys' Shop.
- 12.15 p.m.—Wassons' Musical Program
- 12.30 p.m.—Ideal Stores' Musicales.
- 12.45 p.m.—Driscoll's Program.
- 1.00 p.m.—Weather Recordings.
- 1.15 p.m.—Bustin's Fine Furniture.
- 1.20 p.m.—Musical Program.
- 2.30 p.m.—Rex Battle's Orch., Toronto
- 4.00 p.m.—"On the Air."
- 5.00 p.m.—News. Musical Program.
- 5.30 p.m.—Musical Program.
- 5.45 p.m.—United Thrift Store Ltd.
- 5.50 p.m.—Musical Program.
- 6.00 p.m.—"Lucky," Emerson Bros.
- 6.10 p.m.—Capitol Theatre News.
- 6.15 p.m.—Musical Program.
- 6.45 p.m.—J. Marcus "Nemises Inc."
- 7.00 p.m.—Simpson's "Easy Chair."
- 7.30 p.m. to 12.00 mid.—Canadian Radio Commission Programs  
 See details top of 1st col.
- 8.00 p.m.—Dodd's Radio Short Story.
- 8.15 p.m.—Pacific Dairies' Drama.

### GOSMAN, "THE SIGN MAN"

269 Union Street :: Saint John, N. B.

### CFNB—Fredericton—550k.

- 8.00 a.m.—Musical Clock.
- 8.30 a.m.—M. M. A. Talk.
- 8.35 a.m.—"The Listening Post."
- 9.30 a.m.—Maytag Melodies.
- 10.00 a.m.—Concert Period.
- 10.15 a.m.—Tangoes.
- 10.30 a.m.—Piano and Violin.
- 10.45 a.m.—Enterprise Foundry Prog.
- 11.00 a.m.—Happy Warrior Hour.
- 12 noon—Purina Program.
- 12.15 p.m.—Building Products' Prog.
- 12.30 p.m.—Sherwin-Williams' Musicales.
- 1.00 p.m.—Frigidaire Program.
- 1.30 p.m.—Marconi Radio Hour.
- 2.30 p.m.—Royal York Orch., Toronto.
- 4.30 p.m.—Musical Comedy Memories.
- 5.00 p.m.—Monitor News Bulletins.
- 5.30 p.m.—Weed Chain Program.
- 5.45 p.m.—Band Parade.
- 6.00 p.m.—Dinner Music.
- 6.15 p.m.—Canada Cement Program.
- 6.30 p.m.—Robin Hood's Merry Men.
- 6.45 p.m.—MacDonald Program.
- 7.00 p.m.—News Bulletins.
- 7.10 p.m.—Real Life Drama.
- 7.15 p.m.—Dodd's Radio Short Story.
- 7.30 p.m. to 12.00 mid.—CRC Programs  
 See details top of 1st Col.

### CKCW—Moncton—1370k.

- 8.00 a.m.—Musical Program.
- 8.10 a.m.—News Items.
- 8.30 a.m.—Devotional Period.
- 8.45 a.m.—Organ Melodies.
- 9.00 a.m.—Popular Music Half-Hour.
- 9.15 a.m.—Home Forum.
- 12 noon—Musical Program.
- 12.15 p.m.—Jack Grainger.
- 1.00 p.m.—Noon-Day Musicales.
- 12.30 p.m.—Popular Music.
- 5.00 p.m.—Musical Program.
- 6.00 p.m.—Concert Hour.
- 7.00 p.m.—Biscuit Boys.
- 7.15 p.m.—Real Life Dramas.
- 7.30 p.m. to 12.00 mid.—CRC Programs

### CHNS—Halifax—930k.

- 10.00 a.m.—Morning Devotions.
- 10.15 a.m.—Musical Program.
- 10.45 a.m.—News Review.
- 10.55 a.m.—Musical Interlude.
- 11.00 a.m.—Woman's Radio Institute.
- 12 noon—Phinney's Victor Program.
- 12.15 p.m.—Services.
- 12.30 p.m.—Crazy Water Crystallers.
- 12.45 p.m.—News Bulletin.
- 1.00 p.m.—Time; Market Reports, etc.
- 1.15 p.m.—Oxydol's Own Ma Perkins.
- 2.00 p.m.—Dept. of Education.
- 5.30 p.m.—Uncle Mel.
- 6.00 p.m.—Time; Music; Services.
- 6.25 p.m.—Horoscope; Services.
- 6.30 p.m.—Market Reports.
- 6.45 p.m.—Fireside Hour.
- 7.00 p.m.—Birks' Time. Pollyanna.
- 7.30 p.m. to 12.00 mid.—CRC Programs  
 (Details top of 1st. col.)

## LOG OF STATIONS

### MARITIME PROVINCES—

- CHSJ—SAINT JOHN—1120k.
- CFNB—FREDERICTON—550k.
- CKGW—MONCTON—1370k.
- CHNS—HALIFAX—930k.
- CJOB—SYDNEY—1240k.
- CFCY—CHARLOT'TOWN—630k.
- CHCK—CHARLOT'TOWN—1310k.
- CHGS—SUMMERSIDE—1450k.

### UPPER CANADIAN—

- CFCF—MONTREAL—600k.
- CKAC—MONTREAL—730k.
- CRCM—MONTREAL—910k.
- CHNC—NEW CARLISLE—1210k.
- CFRB—TORONTO—690k.
- CROT—TORONTO—840k.
- CKLW—WINDSOR—1030k.

### UNITED STATES—

- WPG—ATLANTIC CITY—1100k.
- WBAL—BALTIMORE—1060k.
- WLBZ—BANGOR—620k.
- WBZ—BOSTON—990k.
- WEEL—BOSTON—590k.
- WNAC—BOSTON—1230k.
- WGR—BUFFALO—550k.
- WLW—CINCINNATI—700k.
- WTAM—CLEVELAND—1070k.
- WJR—DETROIT—750k.
- WTIC—HARTFORD—1060k.
- WOR—NEWARK—710k.
- WLWL—NEW YORK—1100k.
- WCAU—PHILADELPHIA—1170k.
- KDKA—PITTSBURGH—980k.
- WCSH—PORTLAND—940k.
- WGY—SCHENECTADY—840k.

## Meet— Your Announcer Frank Cooley

It was a part in a Shakespearean play that opened radio's doors for Frank Cooley, WLW announcer. . . In 1933 he appeared in "All's Well That Ends Well" at the St. Louis Little Theater. KMOX broadcast a portion of the play and station officials liked his work so well they gave him a staff job. . . He arrived at WLW in Cincinnati by way of WTMJ, Milwaukee. . . At the Nation's Station he announces Sports Commentator Bob Newhall's daily broadcasts. . . A native of San Antonio, Texas, Frank attended Soldar High School in St. Louis and Kemper Military School where he distinguished himself on the debating and track teams. . . Recalls as his most harrowing experience an airplane trip from Amsterdam to Copenhagen in 1930. The pilot lost himself for more than three hours in a blinding storm. An earthquake in Naples the same year cured his wanderlust and he rushed home on the first America-bound ship. . . Frank is blond, unmarried and 23 years old. . . Creamed cabbage is to him what fried chicken is to most folks. Cats give him the jitters.

### CKIC—Wolfville—1010k.

- 12 noon—Studio Program.
- 6.00 p.m.—Studio Program.

### CJLS—Yarmouth—228.9

- 10.00 a.m.—Morning Devotional.
- 10.20 a.m.—Organ Studies.
- 10.45 a.m.—Woman's Forum.
- 11.30 a.m.—CJLS Half-Hour.
- 12 noon—Grand Hotel Program.
- 12.30 p.m.—News; Bait Reports.
- 12.45 p.m.—Fisherman's Broadcast.
- 1.00 p.m.—Weather.
- 5.30 p.m.—Uncle Bob and the Kiddies.
- 6.00 p.m.—Time Signals.
- 6.15 p.m.—Sunset Yodeler.
- 6.30 p.m.—Majestic Theatre.
- 6.45 p.m.—"Down Melody Lane."

## Ex-Stenographer



Here is the most recent picture of lovely MINABELLE ABBOTT, ex-stenographer who is now launched on a brilliant dramatic career as "Mary Sothern" in the "Life of Mary Sothern" series over WLW at Cincinnati, and the Mutual network, Mondays through Fridays at 5.15 p.m., A.S.T.

- 7.00 p.m.—Chas. E. Dyke.
- 7.15 p.m.—Gateway Four Orchestra.

### CFCY—Charlottetown—630k.

- 12 noon—Musical Program.
- 12.31 p.m.—Stock Quotations.
- 12.40 p.m.—Home Forum Program.
- 1.00 p.m.—Luncheon Music.
- 5.00 p.m.—Outports Program.
- 5.45 p.m.—Mother's Own Tea.
- 6.00 p.m.—Kelly & McInnis.
- 6.15 p.m.—Musical Program.
- 6.30 p.m.—Sleepy Town Express.
- 6.45 p.m.—Davis & Lawrence Co.
- 7.00 p.m.—Stock Quotations.
- 7.15 p.m.—S. A. MacDonald.
- 7.30 p.m. to 12.00 mid.—CRC Programs

### WJZ—New York—760k.

NBC RED Network—WBAL (Baltimore), WBZ (Boston), WLW (Cincinnati), WTIC (Hartford), KDKA (Pittsburgh). See Log top 2nd col.

- 5.45 p.m.—Strolling Songsters.
- 6.30 p.m.—The Singing Lady.
- 6.45 p.m.—Little Orphan Annie.
- 7.05 p.m.—Animal News Club.
- 7.15 p.m.—Mary Small, songs.
- 7.30 p.m.—Press-Radio News Service.
- 7.35 p.m.—The King's Guard.
- 7.45 p.m.—Lowell Thomas, news.
- 8.00 p.m.—Dinner Concert.
- 8.15 p.m.—Capt. Tim's Adventures.
- 8.30 p.m.—Lum and Abner, comedy.
- 8.45 p.m.—Opportunity Matinee.
- 9.00 p.m.—Irene Rich, musical star.
- 9.15 p.m.—Wendell Hall, red-headed music maker.
- 9.30 p.m.—Kellogg's College Prom.
- 10.00 p.m.—Al Pearce and His Orch.
- 10.30 p.m.—Fred Waring with His Orch.
- 11.00 p.m.—Nickelodeon, comedy, songs and melodianna.
- 11.30 p.m.—The Other Americas.
- 12.05 a.m.—Dorothy Lamour, soprano.
- 12.15 a.m.—Ink Spots, Negro quartette.
- 12.30 a.m.—Emil Coleman's Orchestra.
- 1.00 a.m.—Shandor, the violinist.
- 1.08 a.m.—Ranny Weeks' Orchestra.
- 1.30 a.m.—George Duffy and His Orch.

### WEAF—New York—660k.

NBC BLUE Network—WGY (Schenectady), WEEL (Boston), WTAM (Cleveland). See Log top 2nd col.

- 6.45 p.m.—Terri La Franconi, tenor.
- 7.00 p.m.—Flying Time.
- 7.20 p.m.—Lee Gordon with His Orch.
- 7.30 p.m.—Press-Radio News Service.
- 7.45 p.m.—Billy and Betty, drama.
- 8.00 p.m.—Amos 'n' Andy, sketch.
- 8.15 p.m.—Uncle Ezra's Radio Station.
- 8.30 p.m.—Frances Adair, soprano.
- 8.45 p.m.—The Fox Fur Trappers.
- 9.00 p.m.—Cities Service Concert Orch. soloist, quartette, orch.
- 10.00 p.m.—"Waltz Time," with Frank Munn, tenor.
- 10.30 p.m.—True Story Hour.
- 11.00 p.m.—The First Nighter, sketch.
- 12.00 mid.—George R. Holmes, news.
- 12.15 a.m.—Leonard Keller's Orchestra
- 12.30 a.m.—Enric Madriguera's Orch.
- 12.45 a.m.—Jesse Crawford, organist.
- 1.00 a.m.—Leon Belasco and His Orch.
- 1.30 a.m.—L. Romanelli's Orchestra.

### WABC—New York—860k.

Columbia CBS chain—WCAU (Philadelphia), WGR (Buffalo), WNAC (Boston). See Log at top 1st col (Boston). See Log at top 2nd col.

- 5.15 p.m.—U. S. Army Band Concert.
- 5.45 p.m.—Tea at the Ritz.
- 6.00 p.m.—Terry and Ted Adventures.
- 6.15 p.m.—Buddy Clark, baritone.
- 6.30 p.m.—Jack Armstrong, drama.
- 6.45 p.m.—The Goldbergs, drama.
- 7.00 p.m.—Buck Rogers in the 25th Century (fantastic).
- 7.15 p.m.—Bobby Benson, Sunny Jim.
- 7.30 p.m.—Press-Radio News Service.
- 7.35 p.m.—Blue Flames, quartette.
- 7.45 p.m.—Kaltenborn Edits the News.
- 8.00 p.m.—Myrt and Marge, drama.
- 8.15 p.m.—The Minstrel Man.

## LET GRONDINES

make your worn Silverware like New at small cost.—Nickel, Silver, Gold, Copper and Chromium Plating.—Out-of-town orders receive prompt attention.

JULES GRONDINES  
 Phone 3-2761 24 Waterloo St.  
 SAINT JOHN, N. B.

# 'SALADA' TEA

is delicious

- 8.45 p.m.—Boake Carter news.
- 9.00 p.m.—Flying Red Horse Tavern.
- 9.30 p.m.—Broadway Varieties.
- 10.00 p.m.—Hollywood Hotel, drama, etc.
- 11.00 p.m.—Richard Himber and Orch.
- 11.30 p.m.—Mary Eastman, soprano.
- 12.00 mid.—Louis Armstrong's Orch.
- 1.00 a.m.—Morton Downey tenor, with Orchestra.

manufactures were unwilling to have the spread between prices in Canada and in the United States increased more than necessary in any part of Canada.

The Maritime Provinces now paid the average freight rate so there would be no change effected there. The proposal would mean higher prices in Ontario and Quebec and lower prices in the west.

## Regional Freight Rates On Autos Among The Proposals

(Continued from Page 17)

charges in those regions. The Winnipeg freight rate would be charged for all cars sold in Western Canada and the balance of freight charges on cars sold in the West spread over the cars sold in Ontario and Quebec.

The suggestion was a constructive one and worthy of further study, said W. R. Campbell, president of the Ford Motor Company. His company had studied it before but had considered the system in the United States prevented a change in Canada. Canadian prices were always compared with American prices and

Without expressing an opinion pro or con, W. J. Smith, comptroller of the General Motors Corporation, expressed fear that freight equalization would mean higher prices to the consumer. The companies would have to guard against loss through heavier sales than anticipated in the far west in computing the uniform charge for freight.

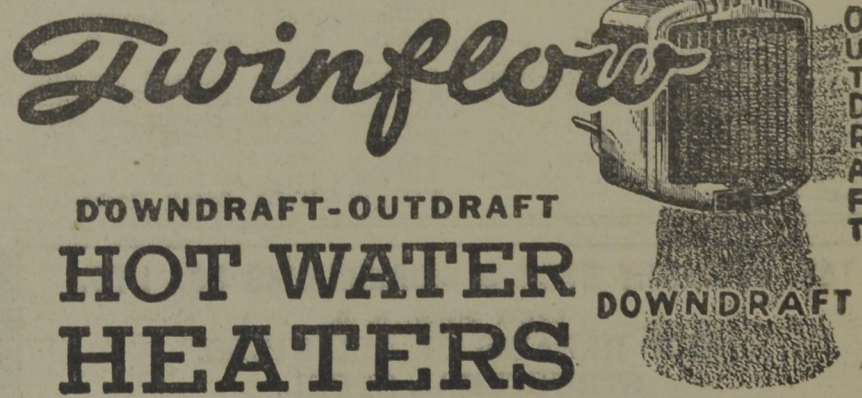
This would probably result in the total charges for freight exceeding the actual payments. It would also work against establishment of local assembly plants.

## E. S. STEPHENSON & CO., LIMITED

Nelson Street, Saint John, N. B.  
 ENGINEERS MANUFACTURERS AGENTS  
 SPECIALIZING IN  
 MECHANICAL and ELECTRICAL EQUIPMENT

# NEW COMFORT IN COLD WEATHER

made possible by THE FAMOUS



HARRISON Twinflow Hot Water Heaters, unlike conventional heaters, deliver heat both downward to the floor and outward toward passenger and driver. . . This dual heat delivery is accomplished by means of built-in distributing chamber and two sets of deflectors. . . Twinflow Downdraft-Outdraft Heaters mean warm feet and more comfortable and healthful heating of your car.

LET US EQUIP YOUR CAR TODAY  
 Battery & Electric Service, Limited  
 90 Duke Street :: :: Saint John, N. B.