

RADIO PROGRAMS

WEDNESDAY, March 11, 1936

THE TIME GIVEN IN ALL PROGRAMS IS ATLANTIC STANDARD
"The Broadcaster" cannot be responsible for errors or omissions in the following programs or for the last-minute changes by stations or sponsors.

TODAY'S CANADIAN RADIO COMMISSION PROGRAM

7.30 p.m.—Canadian Press News.
7.35 p.m.—Dinner Music.
8.00 p.m.—Rex Battle with His Royal York Orchestra, Toronto.
8.15 p.m.—Across the Bay, variety.
8.30 p.m.—Young Tim, children's serial, with Edgar Stone.
8.45 p.m.—Presenting: Marthe Lapointe soprano, and Gaby Hudson, pianist, song recital.
9.00 p.m.—"To The Evening Star," a concert ensemble.
9.30 p.m.—Acadian Serenade, soloists with orchestra, Halifax.
10.00 p.m.—The Road to Yesterday.
10.30 p.m.—Alfred Wallenstein with His Sinfonietta.
11.00 p.m.—"Club Thirteen," orchestra, Three Belles, Bob, Jane.
11.30 p.m.—Mart Kenney and His Orch.
11.45 p.m.—Canadian Press News Bulletin and Weather Forecast

CHSJ—Saint John—1120k.

6.00 a.m.—Weather Forecast.
7.45 a.m.—Recordings.
7.50 p.m.—Weather; News; Music.
8.15 a.m.—"Thoughts For Today."
8.30 a.m.—Musical Program.
9.45 a.m.—Mason Remedies, "Raymer."
11.00 a.m.—Fry-Cadbury Storytte.
11.05 a.m.—Community Dols.
11.50 a.m.—Moods Musicales.
12 noon.—Musical Program.
12.10 p.m.—Bustin's Fine Furniture.
12.15 p.m.—Wassons' Musical Program.
12.30 p.m.—Ideal Stores' Ltd., music.
12.45 p.m.—Driscoll's Program.
2.30 p.m.—Rex Battle's Orch., Toronto.
4.00 p.m.—"On the Air."
5.00 p.m.—News. Musical Program.
6.00 p.m.—"Lucky," Emerson Bros.
6.10 p.m.—Capitol Theatre News.
6.15 p.m.—Front-Page Drama.
6.30 p.m.—Recordings.
6.45 p.m.—J. Marcus' Happiness Hour.
7.20 p.m.—Musical Program.
7.30 p.m. to 12.00 mid.—CRC Programs
See details top of 1st Col.

CFNB—Fredericton—550k.

8.00 a.m.—Musical Clock.
8.30 a.m.—M. M. A. Talk.
8.35 a.m.—"The Listening Post."
9.00 a.m.—Birthday Program.
9.15 a.m.—Popular Songs.
9.30 a.m.—Maytag Melodies.
10.00 a.m.—Concert Period.
10.30 a.m.—The Veiled Lady of Mystery.
10.45 a.m.—Enterprise Foundry Prog.
11.00 a.m.—Happy Warrior Hour.
12 noon.—Purina Program.
12.15 p.m.—Building Products' Prog.
12.30 p.m.—Sherwin-Williams' Musicales.
1.30 p.m.—Frigidaire Program.
2.30 p.m.—Marconi Radio Hour.
3.30 p.m.—Royal York Concert Orch.
4.30 p.m.—Music Box Revue.
5.00 p.m.—Monitor News.
5.30 p.m.—Dance Music.
5.45 p.m.—The Veiled Lady of Mystery.
6.00 p.m.—Organ Reveries.
6.15 p.m.—Canada Cement Program.
6.30 p.m.—Robin Hood's Merry Men.
6.45 p.m.—MacDonald Program.
7.00 p.m.—News Bulletins.
7.15 p.m.—Souvenirs in Rhythm.
7.30 p.m. to 12.00 mid.—Canadian Radio Commission Programs
See details top 1st. col.

CKCW—Moncton—1370k.

8.00 a.m.—Musical Program.
8.15 a.m.—News.
8.30 a.m.—Devotional Period.
8.45 a.m.—Organ Melodies.
9.00 a.m.—Popular Music Half-Hour.
12 noon.—Musical Program.
12.15 p.m.—Jack Grainger.
12.30 p.m.—Popular Music.
1.00 p.m.—Noon-Day Musicales.
5.00 p.m.—Musical Program.
6.00 p.m.—Concert Hour.
7.00 p.m.—The Billikins.
7.15 p.m.—Real Life Dramas.
7.30 p.m. to 12.00 mid.—CRC Programs
See details top 1st. col.

CKIC—Wolfville—1010k.

12 noon.—Studio Program.
6.00 p.m.—Studio Program.

LOG OF STATIONS

MARITIME PROVINCES—

CHSJ—SAINT JOHN—1120k.
CFNB—FREDERICTON—550k.
CKGW—MONCTON—1370k.
CHNS—HALIFAX—930k.
CJCB—SYDNEY—1240k.
CFCY—CHARLOT'TOWN—630k.
CHCK—CHARLOT'TOWN—1310k.
CHGS—SUMMERSIDE—1450k.

UPPER CANADIAN—

CFCF—MONTREAL—600k.
CKAC—MONTREAL—730k.
CRCM—MONTREAL—910k.
CHNC—NEW CARLISLE—1210k.
CFRB—TORONTO—690k.
CRCT—TORONTO—840k.
CKLW—WINDSOR—1030k.

UNITED STATES—

WPG—ATLANTIC CITY—1100k.
WBAL—BALTIMORE—1060k.
WLBZ—BANGOR—620k.
WBZ—BOSTON—990k.
WEEL—BOSTON—590k.
WNAC—BOSTON—1230k.
WGR—BUFFALO—550k.
WLW—CINCINNATI—700k.
WTAM—CLEVELAND—1070k.
WJR—DETROIT—750k.
WTIC—HARTFORD—1060k.
WOR—NEWARK—710k.
WLWL—NEW YORK—1100k.
WCAU—PHILADELPHIA—1170k.
KDKA—PITTSBURGH—980k.
WCSH—PORTLAND—940k.
WGY—SCHENECTADY—840k.

CHNS—Halifax—930k.

10.00 a.m.—Morning Devotions.
10.15 a.m.—Musical Program.
10.40 a.m.—Fry-Cadbury Program.
10.45 a.m.—News Review.
11.00 a.m.—Mrs. Dexter's Radio Hour.
12 noon.—Phinney's Victor Program.
12.15 p.m.—Services.
12.30 p.m.—Crazy Water Crystalizers.
12.45 p.m.—News Bulletin.
1.00 p.m.—Time; Market Reports, etc.
1.15 p.m.—Oxydol's Own Ma Perkins.
5.00 p.m.—Uncle Mel.
5.30 p.m.—Pollyanna.
6.00 p.m.—Time. Music; Services.
6.25 p.m.—Horoscope; Services.
6.30 p.m.—Market Reports.
6.45 p.m.—Fireside Hour.
7.00 p.m.—Laurie Hart and His Orch.
7.30 p.m. to 12.00 mid.—CRC Programs
See details top of 1st col.

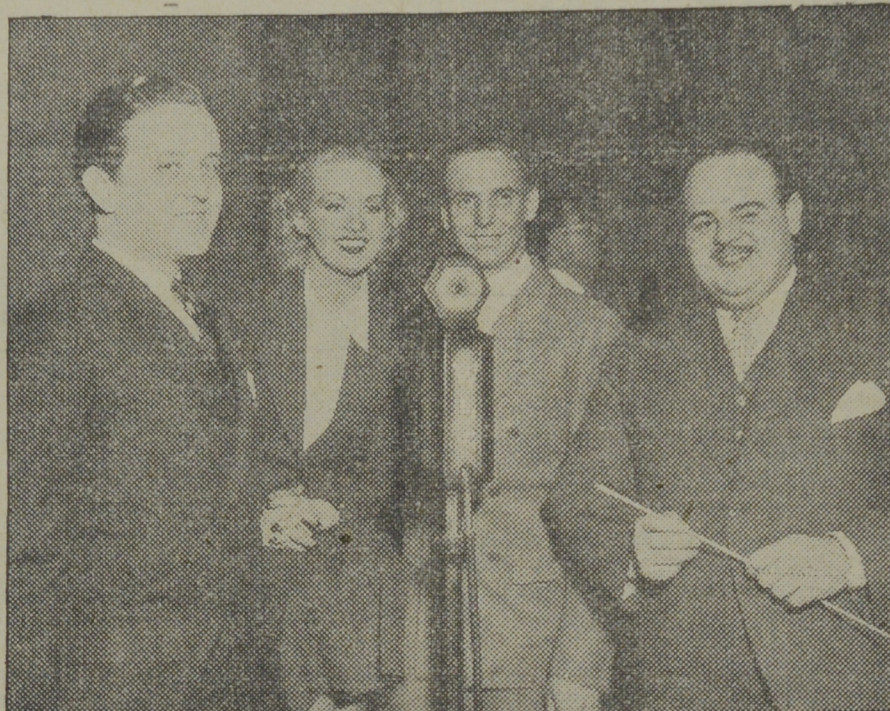
CJLS—Yarmouth—228.9

10.00 a.m.—Morning Devotional.
10.20 a.m.—Organ Studies.
10.30 a.m.—Fry Cadbury Program.
10.45 a.m.—Woman's Forum.
11.30 a.m.—Sustaining Program.
12 noon.—Grand Hotel Program.
12.30 p.m.—News; Bait Reports.
12.45 p.m.—Fisherman's Broadcast.
1.00 p.m.—Weather.
5.30 p.m.—Uncle Bob and the Kiddies.
6.00 p.m.—Robin Hood and His Men.
6.15 p.m.—Gateway Hawaiians.
6.30 p.m.—"Down Melody Lane."
7.00 p.m.—Gateways Program.

CFCY—Charlottetown—630k.

11.00 a.m.—Woman's Hour.
12 noon.—Irwin Printing Co.
12.31 p.m.—Stock Quotations.
12.40 p.m.—Home Forum Program.
5.00 p.m.—Outports Program.
6.00 p.m.—Davis & Lawrence Co.
6.30 p.m.—Sleepy Town Express.
6.45 p.m.—Tip Top Store.
7.00 p.m.—Stock Quotations.
7.25 p.m.—Ironized Yeast.
7.30 p.m. to 12.00 mid.—CRC Programs
(Details top of 1st. col.)
7.45 p.m.—Basilica Service.
9.00 p.m.—The Islanders.

Jackie Coogan Is Guest



JACKIE COOGAN, all-time Number One "Kiddie" of the movies, and MISS BETTY GRABLE, were guest performers recently on the Crosley Follies' hour over WLW and the Mutual network. In the group, left to right, are: TOM SLATER, announcer; Miss Grable, Jackie Coogan, and PHIL DAVIS, Follies' orchestra leader.

Brilliant Tenor



NINO MARTINI

in his latest portrait. This brilliant young tenor has won three-fold acclaim at the Metropolitan Opera House, on the screen, and in his distinctive programs with Andre Kostelanetz' Orchestra and Chorus on the nationwide CBS network every Saturday at 10.00 p.m., A.S.T. Martini, a native of Verona, Italy, offers on his Chesterfield programs selections from every repertoire of song—operatic arias, favorite melodies from the classics, operettas and popular American and European

WJZ—New York—760k.

NBC BLUE Network—WGY (Schenectady), WEEL (Boston), WTAM (Cleveland). See Log top 2nd col.
7.30 p.m.—Press-Radio News Bureau.
7.35 p.m.—King's Guard, male quartet.
7.45 p.m.—Lowell Thomas, news.
8.00 p.m.—Easy Aces, comedy sketch.
8.15 p.m.—Capt. Tim's Adventures, composers.

8.30 p.m.—Lum and Abner, comedy.
8.45 p.m.—The Dream Singer.
9.00 p.m.—Musical, with Phil Ducey, Jane Williams, Orchestra.
9.30 p.m.—Armco Iron Master Prog.
10.00 p.m.—The Corn Cob Pipe Club of Virginia.
10.30 p.m.—20,000 Years in Sing Sing.
11.00 p.m.—John Charles Thomas, with Frank Tours' Orchestra.
11.30 p.m.—Gems of Color.
12.00 mid.—Eso News Reporter.
12.05 a.m.—Henry Busse with His Orch.
12.30 a.m.—Enoch Light and His Orch.
1.00 a.m.—Shandor, the violinist.
1.08 a.m.—Joe Rines with His Orch.
1.30 a.m.—Enric Madriguera's Orch.

WEAF—New York—660k.

NBC RED Network—WBAL (Baltimore), WBZ (Boston), WLW (Cincinnati), WTIC (Hartford), KDKA (Pittsburgh). See Log top 2nd col.
7.30 p.m.—Press-Radio News Bureau.
7.35 p.m.—Jackie Heller, tenor.
7.45 p.m.—Billy and Betty, drama.
8.00 p.m.—Amos 'n' Andy, comedy.
8.15 p.m.—Uncle Ezra, comedy skit.
8.30 p.m.—Human Side of the News.
8.45 p.m.—"Our American Schools."
9.00 p.m.—One Man's Family, drama.
9.30 p.m.—Lady Esther Program.
10.00 p.m.—Town Hall Tonight, with Fred Allen and others.
11.00 p.m.—Your Hit Parade.
12.00 mid.—Eddie Duchin's Orchestra.
12.35 a.m.—Benny Goodman's Orch.
12.45 a.m.—Jesse Crawford, organist.
1.30 a.m.—Henry Busse and His Orch.
1.30 a.m.—Lights Out, mystery drama

WABC—New York—860k.

Columbia CBS chain—WCAU (Philadelphia), WGR (Buffalo), WNAC (Boston). See Log at top 2nd col.
7.30 p.m.—Press-Radio News Service.
7.35 p.m.—Vanished Voices.
8.00 p.m.—Myrt and Marge, sketch.
8.15 p.m.—Paris Night Life.
8.30 p.m.—Kate Smith's Coffee Time.

8.45 p.m.—Boake Carter, news.
9.00 p.m.—Cavalcade of America.
9.30 p.m.—Burns and Allen, comedy.
10.00 p.m.—Rosa Ponselle, with Orchestra and Chorus.
10.30 p.m.—Ray Noble with His Orch.
11.00 p.m.—Gang Busters.
11.30 p.m.—Morton Downey, tenor.
12.00 mid.—Abe Lyman and His Orch.
12.30 a.m.—Claude Hopkni's Orchestra.
1.00 a.m.—George Olsen and His Orch.
1.30 a.m.—Milton Keller's Orchestra.

Name Badges In The British Navy Now Being Changed

(Continued from Page 17)

Vivacious, casting about for an idea for a badge for his ship, had a brain wave. Shortly afterward there appeared on the quarter-deck, cast in brass in the form of a ship's badge, a portrait of Lloyd George.

H.M.S. Onslaught had a badge which puzzled people for some time. It consisted of a single bulrush. When the commanding officer was asked to explain the significance of the badge he remarked, "Well, isn't an onslaught a—rush?"

Some of the work of preparing ship's badges leads to a great deal of research. In the case of ships named after famous men or cities the ship's badge usually takes the form of some part of the arms of the man or city after which the ship is named. But even here there is sometimes great difficulty, for many old-time admirals adopted arms to which they had no real right.

Many ships' names lead to research in natural history to produce an appropriate badge. The names of some of the new submarines and sloops, which are named after kinds of fish, have taken the Admiralty adviser to the Zoological Gardens Aquarium.

Horticulture also has its place, as in the case of the "Flower" class sloops built during the war. The origin of these names lies in the fact that difficulty was experienced in choosing names for a large number of sloops which were being rapidly constructed. An official of the Admiralty was a keen gardener and had a seedsman's catalogue on his desk. He ran his finger down the catalogue and the "Flower" class came into being.

Some ships' names are so inappropriate that it is almost impossible to design a badge which will be appropriate both to the name of the ship and the traditions of the navy. Most of these names are the outcome of the "alphabetical" system of naming classes of ships, and names such as "Truant," "Torrid," "Dainty" are found in the navy list.

Support "The Broadcaster" by patronizing its advertisers.

ST. JOHN DRY DOCK & SHIPBUILDING CO., LTD.

SAINT JOHN, N. B.

SHIP REPAIRS OF ALL KINDS.
STRUCTURAL STEEL.

DESIGNERS AND ERECTORS OF ALL CLASSES OF STRUCTURAL STEEL WORK

CHAS. A. MACDONALD & SON

FIRE, SICKNESS, ACCIDENT, AUTOMOBILE, PLATE GLASS INSURANCE

49 Canterbury St. H. W. Kinsman, Mgr. Phone 3-3536

"Automobile Springs of Quality" OLD SPRINGS RE-CONDITIONED AXLES RE-SET

SAINT JOHN SPRING WORKS

J. E. ARROWSMITH, Manager.
81-83 Thorne Ave., Saint John, N. B.

MICKEY MOUSE

A BONE TO PICK WITH GOOFLY!

By WALT DISNEY

