

# RADIO PROGRAMS

TUESDAY, January 21, 1936

THE TIME GIVEN IN ALL PROGRAMS IS ATLANTIC STANDARD  
"The Broadcaster" cannot be responsible for errors or omissions in the following programs or for the last-minute changes by stations or sponsors.

## TODAY'S CANADIAN RADIO COMMISSION PROGRAM

- 6.30 p.m.—Ritz Carlton Concert Trio, from Montreal.
- 6.45 p.m.—Closing Stock Quotations, from Montreal.
- 7.00 p.m.—Overseas Program, rebroadcast, from Ottawa.
- 7.30 p.m.—Canadian Press News.
- 7.35 p.m.—Understanding Music, with Howard Barlow's Orch.
- 8.00 p.m.—Luigi Romanelli and His Orchestra.
- 8.15 p.m.—"West to East," Heber and William Morton.
- 8.30 p.m.—Young Tim, children's serial, direction Edgar Stone.
- 8.45 p.m.—Novelty Instrumental Group under Maurice Durienn.
- 9.00 p.m.—From the Green Room, international stars of stage and radio, Loew's Theatre.
- 9.30 p.m.—No Mournful Numbers, from Winnipeg.
- 10.00 p.m.—Ottawa Boys' Band.
- 10.30 p.m.—Ici Paris, soloist and orchestra, from Montreal.
- 11.00 p.m.—Au Clair de la Lune, soloists and orchestra, Edmonton.
- 11.30 p.m.—Radio Manufacturer's Talk.
- 11.45 p.m.—Canadian Press News Bulletin and Weather Forecast.

### CHSJ—Saint John—1120k.

- 6.00 a.m.—Weather Forecast.
- 7.45 a.m.—Recordings.
- 7.50 p.m.—Weather; News; Music.
- 8.15 a.m.—"Thoughts For Today."
- 8.30 a.m.—Musical Program.
- 10.00 a.m.—"Hour of Good Cheer."
- 11.00 a.m.—Fry-Cadbury Storyette.
- 11.05 a.m.—Community Doings.
- 11.30 a.m.—Moods Musicales.
- 12 noon—Musical Program.
- 12.15 p.m.—Wassons' Musical Program.
- 12.30 p.m.—Ideal Stores' Program.
- 12.45 p.m.—Driscolls' Program.
- 2.30 p.m.—Rex Battle's Orch., Toronto
- 4.00 p.m.—"On the Air."
- 5.00 p.m.—News Bulletin.
- 5.05 p.m.—Recordings.
- 5.30 p.m.—Musical Program.
- 6.00 p.m.—"Lucky," Emerson Bros.
- 6.10 p.m.—Capitol Theatre News.
- 6.15 p.m.—Musical Program.
- 6.30 p.m.—Musical Program, CRBC.
- 6.45 p.m.—Stock Market Reports, CRC.
- 7.00 p.m.—"True Confessions," Cystex.
- 7.15 p.m.—Robin Hood Mills Ltd.
- 7.30 p.m. to 12.00 mid.—Canadian Radio Commission Programs  
See details top of 1st col.
- 8.15 p.m.—Pacific Dairies Ltd, Prog.

Office, 3-3047.

Res., 3-8564

### ALBERT V. WEATHERHEAD

M.R.A.I.C.

Architect and Architectural Engineer

57 CHARLOTTE STREET  
Saint John, N. B.

MEMBER:

Royal Architects' Inst. of Canada  
Architects' Association of N. B.,  
Assoc. of Profess. Engineers of N.B.

## LOG OF STATIONS

### MARITIME PROVINCES—

- CHSJ—SAINT JOHN—1120k.
- CFNB—FREDERICTON—550k.
- CKGW—MONCTON—1370k.
- CHNS—HALIFAX—930k.
- CJCB—SYDNEY—1240k.
- CFCY—CHARLOTTOWN—630k.
- CHCK—CHARLOTTOWN—1310k.
- CHGS—SUMMERSIDE—1450k.

### UPPER CANADIAN—

- CFCF—MONTREAL—600k.
- CKAC—MONTREAL—730k.
- CRCM—MONTREAL—910k.
- CHNC—NEW CARLISLE—1210k.
- CFRB—TORONTO—690k.
- CRCT—TORONTO—840k.
- CKLW—WINDSOR—1030k.

### UNITED STATES—

- WPG—ATLANTIC CITY—1100k.
- WBAL—BALTIMORE—1060k.
- WLBZ—BANGOR—620k.
- WBZ—BOSTON—990k.
- WEEL—BOSTON—590k.
- WNAC—BOSTON—1230k.
- WGR—BUFFALO—550k.
- WLW—CINCINNATI—700k.
- WTAM—CLEVELAND—1070k.
- WJR—DETROIT—750k.
- WTIC—HARTFORD—1060k.
- WOR—NEWARK—710k.
- WLWL—NEW YORK—1100k.
- WCAU—PHILADELPHIA—1170k.
- KDKA—PITTSBURGH—980k.
- WCSH—PORTLAND—940k.
- WGY—SCHENECTADY—840k.

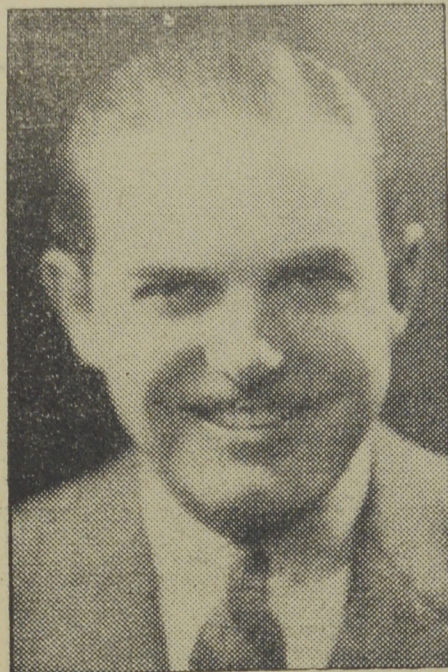
### CFNB—Fredericton—550k.

- 8.00 a.m.—Musical Clock.
- 8.30 a.m.—M. M. A. Talk.
- 8.35 a.m.—"The Listening Post."
- 9.00 a.m.—Birthday Program.
- 9.15 a.m.—Strings.
- 9.30 a.m.—Maytag Melodies.
- 10.00 a.m.—Concert Period.
- 10.15 a.m.—Studies in Black and White
- 10.30 a.m.—Fry-Cadbury Storyette.
- 10.45 a.m.—Enterprise Foundry Prog.
- 11.00 a.m.—Happy Warrior Hour.
- 12 noon—Purina Program.
- 12.15 p.m.—Frigidaire Program.
- 12.45 p.m.—Building Products Prog.
- 1.00 p.m.—Sherwin-Williams Musicales.
- 1.30 p.m.—Marconi Radio Hour.
- 2.30 p.m.—Royal York Orch., Toronto.
- 4.30 p.m.—Musical Comedy Memories.
- 5.00 p.m.—Monitor News Bulletins.
- 5.30 p.m.—Dance Music.
- 5.45 p.m.—Old Time Dance Music.
- 6.00 p.m.—Dinner Music.
- 6.15 p.m.—Canada Cement Program.
- 6.30 p.m.—Burgess Battery Program.
- 6.45 p.m.—MacDonald Program.
- 7.00 p.m.—News Bulletins.
- 7.15 p.m.—Weed Chain Program.
- 7.30 p.m. to 12.00 mid.—CRC Programs  
See details top of 1st col.

### CKCW—Moncton—1370k.

- 8.00 a.m.—Musical Program.
- 8.10 a.m.—News Items.
- 8.30 a.m.—Devotional Period.
- 8.45 a.m.—Organ Melodies.

## Popular Maestro



The distinctive music of ROSS PIERCE and his novelty orchestra is now to be heard over WLW and WSAI direct from the Old Vienna Restaurant, Hotel Netherland Plaza, Cincinnati. The Pierce orchestra is presented under the management of the WLW Artists' Bureau. Well known in musical and night club circles, Ross Pierce has just returned to Cincinnati following a successful tour through the west and on the Pacific coast. Before organizing his own band he played with such orchestras as those of Henry Thies, Jean Goldkett, Seymour Simins, Paul Whiteman. He served on the musical staffs of both station WLW and Columbia. St. Louis is his home town.

- 9.00 a.m.—Popular Music Half-Hour.
- 12 noon—Musical Program.
- 12.15 p.m.—News.
- 12.30 p.m.—Popular Music.
- 1.00 p.m.—Noon-Day Musicales.
- 5.00 p.m.—Musical Program.
- 6.00 p.m.—Concert Hour.
- 7.00 p.m.—Radio Guide Gossip.
- 7.15 p.m.—Katherine Thompson Blight and W. J. Lewis.
- 7.30 p.m. to 12.00 mid.—CRC Programs  
See details top of 1st col.

### CHNS—Halifax—930k.

- 10.00 a.m.—Morning Devotions.
- 10.15 a.m.—Musical Program.
- 10.45 a.m.—News Review.
- 10.55 a.m.—Fry-Cadbury Program.
- 11.00 a.m.—Mrs. Dexter's Radio Hour.
- 12 noon—Phinney's Victor Program.
- 12.15 p.m.—Services.
- 12.30 p.m.—Cousins' Radio Parade.
- 12.45 p.m.—News Bulletin.
- 1.00 p.m.—Time; Market Reports, etc.
- 1.15 p.m.—Oxydol's Own Ma Perkins.
- 5.30 p.m.—Uncle Mel.
- 6.00 p.m.—Time; Music; Services.
- 6.25 p.m.—Horoscope; Services.
- 6.30 p.m.—Market Reports.
- 7.00 p.m.—Don Murray and His Orch.
- 7.30 p.m. to 12.00 mid.—CRC Programs  
See details top of 1st Col.

### GOSMAN, "THE SIGN MAN"

269 Union Street :: Saint John, N. B.

### CFCY—Charlottetown—630k.

- 12 noon—Peerless Program.
- 12.15 p.m.—Prowse Bros. Program.
- 12.31 p.m.—Stock Quotations.
- 12.40 p.m.—Home Forum Program.
- 5.00 p.m.—Outports Program.
- 5.30 p.m.—Moore & McLeod Program.
- 6.00 p.m.—Musical Program.
- 6.15 p.m.—Dry Cleaners' Program.
- 6.30 p.m.—Sleepy Town Express.
- 6.45 p.m.—Merchants' Program.
- 7.00 p.m.—Stock Quotations.
- 7.15 p.m.—Jack Cameron.
- 7.30 p.m. to 12.00 mid.—CRC Programs

### CKIC—Wolfville—1010k.

- 12 noon—Studio Program.
- 6.00 p.m.—Studio Program.

## Have Your Diamonds Re-set

in modern mounts or RE-TIP-PED and Made Secure. We can do this in our up-to-date workshop at 9 KING SQUARE, first floor up, (next to Bardsley Hat Factory, Saint John, N. B.

### CECIL V. COWIE

EYE GLASS FRAMES  
ELECTRICALLY WELDED

## MINTEX TWICE AS SAFE BRAKE LININGS

A Lining For Every Type of Brake



Another Motorist's Operating Budget "all shot."

## Good Brakes

The yearly cost of regular Brake Service on the average car is only a fraction of what a single accident is likely to cost in repairs.

Over a period of years you actually save money on your operating expenses by arranging with us for periodic brake inspection service.

When new linings are necessary, the best is none too good. Therefore BE SAFE by always demanding "MINTEX" (Twice As Safe) Brake Linings.

Don't Forget Your Brakes. They Guard Your Safety.

ON SALE AT LEADING DEALERS EVERYWHERE

### WJZ—New York—760k.

NBC RED Network—WBAL (Baltimore), WBZ (Boston), WLW (Cincinnati), WTIC (Hartford), KDKA (Pittsburgh). See Log top 2nd col.

- 7.00 p.m.—"Flying Time."
- 7.10 p.m.—Esso News Reporter.
- 7.30 p.m.—Press-Radio News Service.
- 7.35 p.m.—To be announced.
- 7.45 p.m.—Lowell Thomas, news.
- 8.00 p.m.—"Easy Aces," sketch.
- 8.15 p.m.—The Norsemen Quartette.
- 8.30 p.m.—Lum and Abner, comedy.
- 8.45 p.m.—Omega Prog., Phil Cook.
- 9.00 p.m.—Eno Crime Clues, drama.
- 9.30 p.m.—Welcome Valley.
- 10.00 p.m.—Ben Bernie and His Orch.
- 10.30 p.m.—Helen Hayes, songs.
- 11.00 p.m.—Wendell Hall, music maker.
- 11.15 p.m.—Ray Heatherton, baritone.
- 11.30 p.m.—Meredith Willson's Orch.
- 12.00 mid.—Esso News Reporter.
- 12.05 a.m.—Dick Gasparre's Orchestra.
- 12.30 a.m.—Henry King and His Orch.
- 1.00 a.m.—Shandor, the violinist.
- 1.08 a.m.—Ranny Weeks and His Orch.
- 1.30 a.m.—L. Romanelli's Orchestra.

12.35 a.m.—E. Madriguera's Orchestra.  
12.45 a.m.—Jesse Crawford, organist.  
1.00 a.m.—Leon Belasco and His Orch.  
1.30 a.m.—Earl Hines with His Orch.

### WABC—New York—860k.

Columbia CBS chain—WCAU (Philadelphia), WGR (Buffalo), WNAC (Boston). See Log at top 2nd col.

- 5.00 p.m.—Cleveland String Quartette.
- 5.30 p.m.—Science Service.
- 5.45 p.m.—Three Little Words.
- 6.00 p.m.—Terry and Ted Adventure.
- 6.15 p.m.—Jimmy Farrell, baritone.
- 6.30 p.m.—The All-American Boy.
- 6.45 p.m.—The Goldbergs, drama.
- 7.00 p.m.—Benay Venuta, songs.
- 7.15 p.m.—News of Youth.
- 7.30 p.m.—Press-Radio News Service.
- 7.35 p.m.—Understanding Music.
- 8.00 p.m.—Myrt and Marge, drama.
- 8.15 p.m.—Krueger Musical Toast.
- 8.30 p.m.—Kate Smith and Her Guest Stars, with Orchestra.
- 8.45 p.m.—Boake Carter, news.
- 9.00 p.m.—Lavender and Old Lace.
- 9.30 p.m.—Packard Presents Lawrence Tibbett, baritone.
- 10.00 p.m.—Camel Caravan, with Glen Gray and His Orchestra.
- 10.30 p.m.—Fred Waring's Pennsylvanians and Their Music.
- 11.30 p.m.—On the Air with Gluskin.
- 12.00 mid.—Ozzie Nelson's Orchestra.
- 12.30 a.m.—Louis Armstrong's Orch.

## Bread, Rolls, Cake, Pastry with the Real Home Flavor.

SHIELD'S HOME BAKERY,  
265 Main Street.

### WEAF—New York—660k.

NBC BLUE Network—WGY (Schenectady), WEEL (Boston), WTAM (Cleveland). See Log top 2nd col.

- 6.30 p.m.—James Wilkinson, baritone.
- 6.45 p.m.—To be announced.
- 7.00 p.m.—Flying Time, aviation.
- 7.15 p.m.—Mid-Week Hymn Sing.
- 7.30 p.m.—Press-Radio News Service.
- 7.45 p.m.—Billy and Betty.
- 8.00 p.m.—Amos 'n' Andy, comedy.
- 8.15 p.m.—"Popeye the Sailor."
- 8.30 p.m.—Human Side of the News.
- 8.45 p.m.—You and Your Government.
- 9.00 p.m.—Leo Reisman and His Orchestra, with Phil Dewey.
- 9.30 p.m.—Lady Esther Program.
- 10.00 p.m.—N. T. G. and His Girls.
- 10.30 p.m.—The Jumbo Fire Chief Show with guest artists.
- 11.00 p.m.—Swift Co. Program.
- 11.30 p.m.—Jimmy Fidler and His Hollywood Gossip.
- 12.00 mid.—Ruby Newman's Orchestra.
- 12.30 a.m.—Esso News Reporter.

## F. S. WALKER

PLUMBING and HEATING

14 Church St., Phone 3-2025  
SAINT JOHN, N. B.

### COMPLETE

## LAUNDRY SERVICE

PROMPT and EFFICIENT  
Telephone 3-2451

CITY WET WASH LAUNDRY, Ltd.

## CARLSON'S AUTO PARTS

300 Union Street Saint John, N. B. Phone 3-6188

NEW PARTS and ACCESSORIES for All Makes of Cars and Trucks

—Our Prices Are the Lowest in the Maritimes—  
WRITE US FOR CATALOGUE

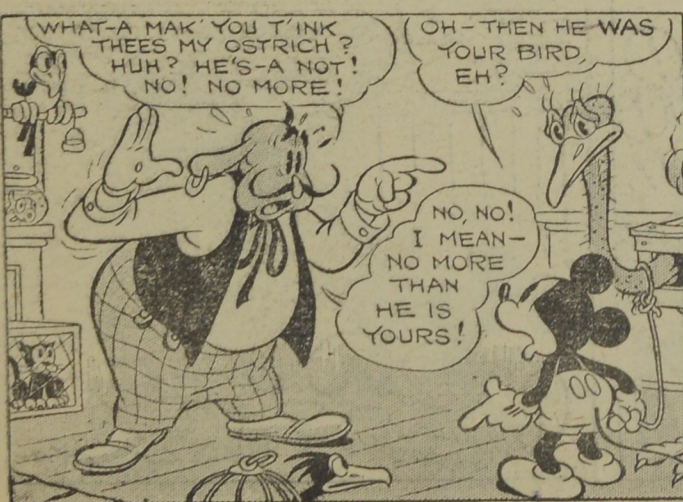
## ELECTRICAL SUPPLIES of Every Description

PROMPT SERVICE TO ALL PARTS OF THE MARITIMES

### H. M. HOPPER CO., LIMITED

51-59 DOCK STREET—SAINT JOHN, N. B.

## MICKEY MOUSE



## POSSESSION'S NINE-TENTHS OF THE LAW

