

RADIO PROGRAMS

WEDNESDAY, January 22, 1936

THE TIME GIVEN IN ALL PROGRAMS IS ATLANTIC STANDARD
 "The Broadcaster" cannot be responsible for errors or omissions in the following programs or for the last-minute changes by stations or sponsors.

TODAY'S CANADIAN RADIO COMMISSION PROGRAM

- 7.00 p.m.—Overseas Program, BBC re-broadcast, from Ottawa.
- 7.30 p.m.—Canadian Press News.
- 7.35 p.m.—Dinner Music.
- 8.00 p.m.—Rex Battle with His Royal York Orchestra, Toronto.
- 8.15 p.m.—Across the Bay, variety.
- 8.30 p.m.—Young Tim, children's serial, with Edgar Stone.
- 8.45 p.m.—Presenting: Marthe Lapointe soprano, and Gaby Hudson, pianist, song recital.
- 9.00 p.m.—Knights of Gladness, soloist and orchestra.
- 9.30 p.m.—Acadian Serenade, soloists with orchestra, Halifax.
- 10.00 p.m.—The Road to Yesterday.
- 10.30 p.m.—Alfred Wallenstein with His Sinfonietta.
- 11.00 p.m.—"Club Thirteen," orchestra, Three Belles, Bob, Jane.
- 11.30 p.m.—Mark Kenney with His Orchestra.
- 11.45 p.m.—Canadian Press News Bulletin and Weather Forecast.

CHSJ—Saint John—1120k.

- 6.00 a.m.—Weather Forecast.
- 7.45 a.m.—Recordings.
- 7.50 p.m.—Weather; News; Music.
- 8.15 a.m.—"Thoughts For Today."
- 8.30 a.m.—Musical Program.
- 9.45 a.m.—Mason Remedies, "Raymer."
- 11.00 a.m.—Fry-Cadbury Storytte.
- 11.05 a.m.—Community Doings.
- 11.30 a.m.—Moods Musicales.
- 12 noon—Musical Program.
- 12.10 p.m.—Bustin's Fine Furniture.
- 12.15 p.m.—Wassons' Musical Program.
- 12.30 p.m.—Ideal Stores' Ltd., music.
- 12.45 p.m.—Driscoll's Program.
- 2.30 p.m.—Rex Battle's Orch., Toronto
- 4.00 p.m.—"On the Air."
- 5.00 p.m.—News, Musical Program.
- 6.00 p.m.—"Lucky," Emerson Bros.
- 8.10 p.m.—Capital Theatre News.
- 8.15 p.m.—Front-Page Drama.
- 6.30 p.m.—Recordings.
- 6.45 p.m.—J. Marcus' "Happiness Hour"
- 7.20 p.m.—Musical Program.
- 7.30 p.m. to 12.00 mid.—CRC Programs See details top of 1st col.
- 9.30 p.m.—Dwyers' Bakeries' Program.

COSMAN, "THE SIGN MAN" 269 Union Street :: Saint John, N. B.

CFNB—Fredericton—550k.

- 8.00 a.m.—Musical Clock.
- 8.30 a.m.—M. M. A. Talk.
- 8.35 a.m.—"The Listening Post."
- 9.00 a.m.—Birthday Program.
- 9.30 a.m.—Maytag Melodies.
- 10.00 a.m.—Concert Period.
- 10.15 a.m.—Tangoes.
- 10.30 a.m.—Fry-Cadbury Storytte.
- 10.35 a.m.—Piano and Violin.
- 10.45 a.m.—Enterprise Foundry Prog.
- 11.00 a.m.—Happy Warrior Hour.
- 12 noon—Fridaire Program.
- 12.15 p.m.—Fridaire Program.
- 12.45 p.m.—Building Products' Prog.
- 1.00 p.m.—Sherwin-Williams Musicales.
- 1.30 p.m.—Marconi Radio Hour.
- 2.30 p.m.—Royal York Concert Orch.
- 4.30 p.m.—Music Box Revue.
- 5.00 p.m.—Monitor News.
- 5.30 p.m.—Dance Music.
- 5.45 p.m.—Concert Songs.
- 6.00 p.m.—Dinner Music.
- 6.15 p.m.—Canada Cement Program.
- 6.30 p.m.—Robin Hood's Merry Men.
- 6.45 p.m.—MacDonald Program.
- 7.00 p.m.—News Bulletins.
- 7.10 p.m.—Real Life Dramas.
- 7.15 p.m.—Weed Chain Program.
- 7.30 p.m. to 12.00 mid.—CRC Programs See details top of 1st col.

CKCW—Moncton—1370k.

- 8.00 a.m.—Musical Program.
- 8.15 a.m.—News.
- 8.30 a.m.—Devotional Period.
- 8.45 a.m.—Organ Melodies.
- 9.00 a.m.—Popular Music Half-Hour.
- 12 noon—Musical Program.
- 12.15 p.m.—Jack Grainger.
- 12.30 p.m.—Popular Music.
- 1.00 p.m.—Noon-Day Musicales.

LOG OF STATIONS

MARITIME PROVINCES—

- CHSJ—SAINT JOHN—1120k.
- CFNB—FREDERICTON—550k.
- CKGW—MONCTON—1370k.
- CHNS—HALIFAX—930k.
- CJOB—SYDNEY—1240k.
- CFCY—CHARLOT'TOWN—630k.
- CHCK—CHARLOT'TOWN—1310k.
- CHGS—SUMMERSIDE—1450k.

UPPER CANADIAN—

- CFCF—MONTREAL—600k.
- CKAC—MONTREAL—730k.
- CRCM—MONTREAL—910k.
- CHNC—NEW CARLISLE—1210k.
- CFRB—TORONTO—690k.
- CRCT—TORONTO—840k.
- CKLW—WINDSOR—1030k.

UNITED STATES—

- WPG—ATLANTIC CITY—1100k.
- WBAL—BALTIMORE—1060k.
- WLBZ—BANGOR—620k.
- WEZ—BOSTON—990k.
- WEEI—BOSTON—590k.
- WNAC—BOSTON—1230k.
- WGR—BUFFALO—550k.
- WLW—CINCINNATI—700k.
- WTAM—CLEVELAND—1070k.
- WJR—DETROIT—750k.
- WTIC—HARTFORD—1060k.
- WOR—NEWARK—710k.
- WLWL—NEW YORK—1100k.
- WCAU—PHILADELPHIA—1170k.
- KDKA—PITTSBURGH—980k.
- WCSH—PORTLAND—940k.
- WGY—SCHENECTADY—840k.

- 5.00 p.m.—Musical Program.
- 6.00 p.m.—Concert Hour.
- 7.00 p.m.—The Billikins.
- 7.15 p.m.—Real Life Dramas.
- 7.30 p.m. to 12.00 mid.—CRC Programs (Details top of 1st. col.)

CHNS—Halifax—930k.

- 10.00 a.m.—Morning Devotions.
- 10.15 a.m.—Musical Program.
- 10.40 a.m.—Fry-Cadbury Program.
- 10.45 a.m.—News Review.
- 11.00 a.m.—Mrs. Dexter's Radio Hour.
- 12 noon—Phinney's Victor Program.
- 12.15 p.m.—Services.
- 12.30 p.m.—Crazy Water Crystalizers.
- 1.00 p.m.—News Bulletin.
- 1.15 p.m.—Time; Market Reports, etc.
- 1.30 p.m.—Oxydel's Own Ma Perkins.
- 5.00 p.m.—Uncle Mel.
- 5.30 p.m.—Follyanna.
- 6.00 p.m.—Time, Music; Services.
- 6.25 p.m.—Horoscope; Services.
- 6.30 p.m.—Market Reports.
- 6.45 p.m.—Fireside Hour.
- 7.00 p.m.—Laurie Hart and His Orch.
- 7.30 p.m. to 12.00 mid.—CRC Programs See details top of 1st col.

CKIC—Wolfville—1010k.

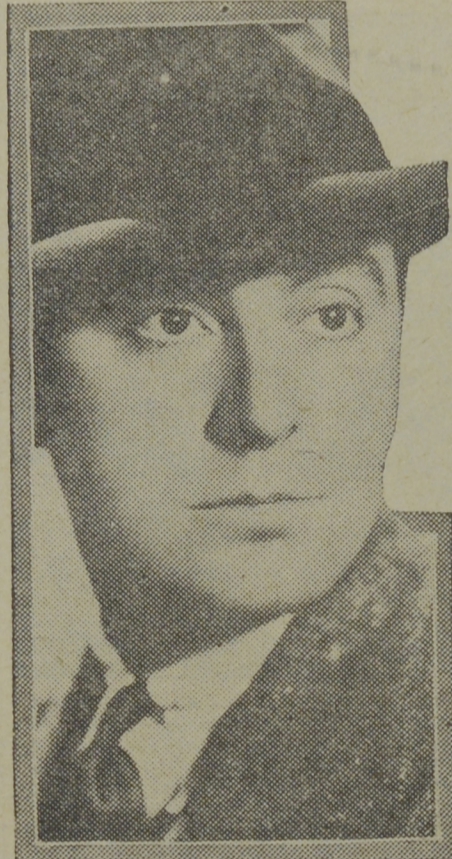
- 12 noon—Studio Program.
- 6.00 p.m.—Studio Program.
- 1.00 a.m.—George Olsen and His Orch.

CFCY—Charlottetown—630k.

- 12 noon—Musical Program.
- 12.31 p.m.—Stock Quotations.
- 12.40 p.m.—Home Forum Program.
- 5.00 p.m.—Outports Program.
- 5.45 p.m.—Mother's Own Tea.
- 6.00 p.m.—Kelly & McInnis.
- 6.30 p.m.—Sleepy Town Express.
- 6.45 p.m.—Davis & Lawrence Co.
- 7.00 p.m.—Stock Quotations.
- 7.15 p.m.—S. A. MacDonald.
- 7.30 p.m. to 12.00 mid.—CRC Programs See details top of 1st Col.

Theatre Guest Tickets for
 W. H. WILSON
 65 Prince William St., Saint John.

"Miltie-Wiltie"



MILTON WATSON, popular young tenor from California, is the vocal light with Jacques Renard's orchestra on the program starting the irrepressible Gracie and the much repressed George Watson's voice is heard over a WABC-Columbia network every Wednesday evening, from 9.30 to 10.00 p.m. A.S.T. Watson has starred in stage productions throughout the country and has been a feature of several famous Broadway successes. A champion athlete in his college career, Milton is six feet, one inch tall, and weighs 170 pounds.

WJZ—New York—760k.

- NBC RED Network—WBAL (Baltimore), WEZ (Boston), WLW (Cincinnati), WTIC (Hartford), KDKA (Pittsburgh). See Log top 2nd col.
- 9.00 p.m.—Musical, with Phil Dusey, Jane Williams, Orchestra.
- 9.30 p.m.—Armco Iron Master Prog.
- 10.00 p.m.—NBC Cinema Theater.
- 10.30 p.m.—20,000 Years in Sing Sing.
- 11.00 p.m.—John Charles Thomas, with Frank Tours' Orchestra.
- 11.30 p.m.—Jimmy Fidler, gossip.
- 11.45 p.m.—The Band Goes To Town, with Concert Orchestra.
- 12.00 mid.—Dorothy Lamour, soprano.
- 12.15 a.m.—Ink Spots, Negro quartette.
- 12.30 a.m.—Al Donahue and His Orch.
- 1.00 a.m.—Shandor, the violinist.
- 1.08 a.m.—Harold Stern and His Orch.
- 1.30 a.m.—Don Bestor with His Orch.

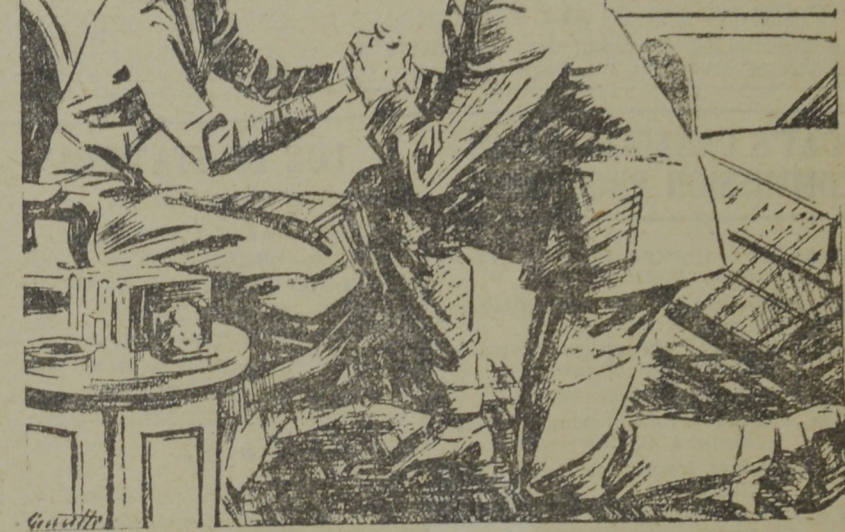
WEAF—New York—660k.

- NBC BLUE Network—WGY (Schenectady), WEEI (Boston), WTAM (Cleveland). See Log top 2nd col.
- 6.30 p.m.—Tom Mix and His Ralston Straight Shooters.
- 6.45 p.m.—To be announced.
- 7.00 p.m.—Flying Time, adventures.
- 7.15 p.m.—Esso News Reporter.
- 7.35 p.m.—Lee Gordon with His Orch.
- 7.45 p.m.—Billy and Betty, drama.
- 8.00 p.m.—Amos 'n' Andy, comedy.
- 8.15 p.m.—Uncle Ezra, comedy skit.
- 8.30 p.m.—Cornie Gates, songs.
- 8.45 p.m.—City Voices.
- 9.00 p.m.—One Man's Family, drama.
- 9.30 p.m.—Lady Esther Program.
- 10.00 p.m.—Town Hall Tonight, with Fred Allen and others.
- 11.00 p.m.—Cleveland Symphony Orch.
- 11.30 p.m.—NBC Music Guild.
- 12.00 mid.—Eddie Duchin's Orchestra.
- 12.35 a.m.—Enric Madriguera's Orch.
- 12.45 a.m.—Jesse Crawford, organist.
- 1.00 a.m.—Leon Belasco and His Orch.
- 1.30 a.m.—Lights Out, mystery drama.

WABC—New York—860k.

- Columbia CBS chain—WCAU (Philadelphia), WGR (Buffalo), WNAC (Boston). See Log at top 2nd col.
- 7.35 p.m.—George Hall with His Orch.
- 7.45 p.m.—Household Music Box.
- 8.00 p.m.—Myrt and Marge, sketch.
- 8.15 p.m.—Krueger Musical Toast.
- 8.30 p.m.—Kate Smith's Coffee Time.
- 8.45 p.m.—Boake Carter, news.

BUT I CAN'T COOK!
 WHO CARES?
 WE CAN LIVE ON
S & F BRANDS



For Quick, Tasty, Ready-to-Serve Meals, ask for—

S & F BRAND Cooked Ham: Bologna

(CELLOPHANE WRAPPED)
 SLIPP & FLEWELLING, LIMITED
 PORK PACKERS << >> SAINT JOHN, N. B.

- 9.00 p.m.—Cavalcade of America.
- 9.30 p.m.—Burns and Allen, skit.
- 10.00 p.m.—Lily Pons, songs; Orch.
- 10.30 p.m.—Ray Noble with His Orch.
- 11.00 p.m.—Crime Crusade Program.
- 11.30 p.m.—Mary Eastman, soprano, with Orchestra.
- 12.00 mid.—Abe Lyman and His Orch.
- 12.30 a.m.—Claude Hopkni's Orchestra.
- 1.00 a.m.—George Olsen and His Orch.
- 1.30 a.m.—Henry Halstead's Orchestra.

payable in foreign exchange, of which it is in desperate need. Increased exports paid for in German marks which emigrating Jews are forced to leave behind would merely represent extra competition for German exports sold for foreign exchange. There is one possibility, however, that might make the project worth while for the German Government and that would be a scheme that would bring foreign exchange. This, it is pointed out, could be done by paying for part of the increased exports in marks and the rest in gold or foreign exchange. If the proposed special fund raised abroad could be utilized for such a purpose, it is felt the German Government would be at least willing to talk about the scheme.

Germany Has Plan To Export Goods When The Jews Leave

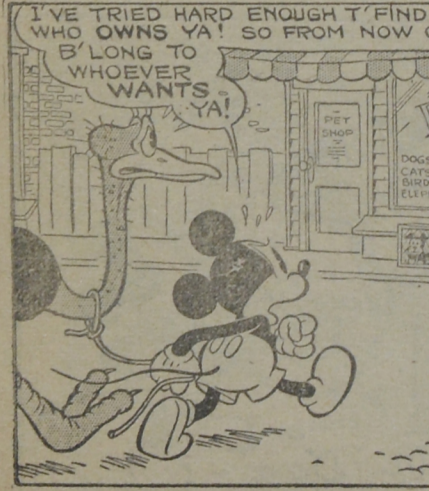
(Continued from Page 17)
 Reichsbank all gold foreign exchange or securities they may acquire as the proceeds of the capital in their possession at the time of their emigration. Special regulations permit emigrants to Palestine to get their money from Germany in proportion to the amount of German exports to Palestine, but new regulations, which will scarcely be more liberal, are to be issued soon. It was pointed out that if Jews emigrating from Germany were permitted to transfer their property in the shape of German goods freely and keep the proceeds they would gladly suffer any loss involved in the transaction so the proposed special fund to be raised abroad for liquidating these exports would not be necessary. But such transfers have always been forbidden under the foreign exchange control laws and new decrees have made these prohibitions more drastic. The German Government is making every effort to restrict exports payable in marks within Germany and to increase exports

JERUSALEM FACES DEATH

Jerusalem.—The most serious drought for many centuries is threatening Jerusalem. The delay in the arrival of a number of pumping shafts from England is generally held to be the cause. The shafts were ordered to complete the Holy City's new water-supply plant which will bring water by pipeline from a coastal river 45 miles away; but they were not included in the original consignment of machinery. Unless heavy rain falls, the city's 105,000 inhabitants may be without water for 14 days as the ancient Solomon Pools, still used as a reservoir, have only a few day's water supply left.

"Automobile Springs of Quality" OLD SPRINGS RE-CONDITIONED AXLES RE-SET
SAINT JOHN SPRING WORKS J. E. ARROWSMITH, Manager. 81-83 Thorne Ave., Saint John, N. B.

MICKEY MOUSE



"— AND STAY OUT!"



OSCAR!



By WALT DISNEY

