

RADIO PROGRAMS

THURSDAY, January 23, 1936

THE TIME GIVEN IN ALL PROGRAMS IS ATLANTIC STANDARD
 "The Broadcaster" cannot be responsible for errors or omissions in the following programs or for the last-minute changes by stations or sponsors.

TODAY'S CANADIAN RADIO COMMISSION PROGRAM

- 7.00 p.m.—Overseas Program, BBC re-broadcast, from Ottawa.
- 7.30 p.m.—Canadian Press News.
- 8.00 p.m.—Luigi Romanelli and His Orchestra.
- 8.15 p.m.—The Cossack, Adolf Wantroff, baritone.
- 8.30 p.m.—Young Tim, children's serial, with Edgar Stone.
- 8.45 p.m.—Edgar Herring's Instrumental group, from Montreal.
- 9.00 p.m.—The Plainsmen, orchestra, soloist, male quartette.
- 9.20 p.m.—Romance and Dividends in Agriculture, talk.
- 9.30 p.m.—Chamber Music, Montreal.
- 10.00 p.m.—Woodwind Duo.
- 10.15 p.m.—Gentleman Jim Himself.
- 10.30 p.m.—League of Nations Society in Canada.
- 11.00 p.m.—For You, Madame, orchestra and ladies' forum.
- 11.30 p.m.—University Lecture by F. G. Somard, Univ. of B. C.
- 11.45 p.m.—Canadian Press News Bulletin and Weather Forecast

CHSJ—Saint John—1120k.

- 6.00 a.m.—Weather Forecast.
- 7.45 a.m.—Recordings.
- 7.50 p.m.—Weather; News; Music.
- 8.15 a.m.—"Thoughts For Today."
- 8.30 a.m.—Musical Program.
- 9.45 a.m.—Mason Remedies, "Raymer"
- 10.00 a.m.—"Hour of Good Cheer."
- 11.00 a.m.—Fry-Cadbury Storyette.
- 11.05 a.m.—Community Doings.
- 11.30 a.m.—Moods Musicale.
- 12 noon—Musical Program.
- 12.15 p.m.—Wassons' Musical Program.
- 12.30 p.m.—Ideal Stores' Program
- 12.45 p.m.—Driscoll's Program.
- 1.00 p.m.—Weather; Musical Program
- 2.30 p.m.—Rex Battle's Orch., Toronto
- 4.00 p.m.—"On the Air"
- 5.00 p.m.—News. Musical Program.
- 5.30 p.m.—Musical Program.
- 5.55 p.m.—American Clothing House.
- 6.00 p.m.—"Lucky," Emerson Bros.
- 6.10 p.m.—Capitol Theatre News.
- 6.15 p.m.—Musical Program.
- 7.15 p.m.—Robin Hood Mills Ltd.
- 7.30 p.m. to 12.00 mid.—Canadian Radio Commission Programs (Details top of 1st. col.)

CFNB—Fredericton—550k.

- 8.00 a.m.—Musical Clock.
- 8.30 a.m.—M. M. A. Talk.
- 8.35 a.m.—"The Listening Post."
- 9.00 a.m.—Birthday Program.
- 9.30 a.m.—Maytag Melodies.
- 10.00 a.m.—Concert Period.
- 10.15 a.m.—Studies in Black and White
- 10.30 a.m.—Strings.
- 10.45 a.m.—Enterprise Foundry Prog.
- 11.00 a.m.—Happy Warrior Hour.
- 12 noon—Purina Program.
- 12.15 p.m.—Frigidaire Program.
- 12.45 p.m.—Building Products' Prog.
- 1.00 p.m.—Sherwin-Williams Musicale
- 1.30 p.m.—Marconi Radio Hour.
- 2.30 p.m.—Royal York Orch., Toronto
- 4.30 p.m.—Music Box Review.
- 5.00 p.m.—Monitor News Bulletins.
- 5.30 p.m.—Symphonic Gems.
- 6.15 p.m.—Canada Cement Program.
- 6.30 p.m.—Burgess Battery Program.
- 6.45 p.m.—MacDonald Program.
- 7.00 p.m.—News Bulletins.
- 7.15 p.m.—Weed Chain Program.
- 7.30 p.m. to 12.00 mid.—CRC Programs See details top of 1st col.

CKCW—Moncton—1370k.

- 8.00 a.m.—Musical Program.
- 8.15 a.m.—News.
- 8.30 a.m.—Devotional Period.
- 8.45 a.m.—Organ Melodies.
- 9.00 a.m.—Popular Music Half-Hour.
- 12 noon—Musical Program.
- 12.15 p.m.—Jack Grainger.
- 12.30 p.m.—Popular Music.
- 1.00 p.m.—Noon-Day Musicale.
- 5.00 p.m.—Musical Program.
- 6.00 p.m.—Concert Hour.

LOG OF STATIONS

MARITIME PROVINCES—

- CHSJ—SAINT JOHN—1120k.
- CFNB—FREDERICTON—550k.
- CKGW—MONCTON—1370k.
- CHNS—HALIFAX—930k.
- CJCB—SYDNEY—1240k.
- CFCY—CHARLOTTOWN—630k.
- CHCK—CHARLOTTOWN—1310k.
- CHGS—SUMMERSIDE—1450k.

UPPER CANADIAN—

- CFCF—MONTREAL—600k.
- CKAC—MONTREAL—730k.
- CRCM—MONTREAL—910k.
- CHNC—NEW CARLISLE—1210k.
- CFRB—TORONTO—690k.
- CRCT—TORONTO—840k.
- CKLW—WINDSOR—1030k.

UNITED STATES—

- WPG—ATLANTIC CITY—1100k.
- WBAL—BALTIMORE—1060k.
- WLBZ—BANGOR—620k.
- WBZ—BOSTON—990k.
- WEEI—BOSTON—590k.
- WNAC—BOSTON—1230k.
- WGR—BUFFALO—550k.
- WLW—CINCINNATI—700k.
- WTAM—CLEVELAND—1070k.
- WJR—DETROIT—750k.
- WTIC—HARTFORD—1060k.
- WOR—NEWARK—710k.
- WLWL—NEW YORK—1100k.
- WCAU—PHILADELPHIA—1170k.
- KDKA—PITTSBURGH—980k.
- WCSH—PORTLAND—940k.
- WGY—SCHENECTADY—840k.

- 7.00 p.m.—The Billikins.
- 7.15 p.m.—Real Life Dramas.
- 7.30 p.m. to 12.00 mid.—CRC Programs

CHNS—Halifax—930k.

- 10.00 a.m.—Morning Devotions.
- 10.15 a.m.—Musical Program.
- 10.40 a.m.—Fry-Cadbury Program.
- 10.45 a.m.—News Review.
- 11.00 a.m.—Mrs. Dexter's Radio Hour.
- 12 noon—Phinney's Victor Program.
- 12.15 p.m.—Services.
- 12.30 p.m.—Cousins' Radio Parade.
- 12.45 p.m.—News Bulletin.
- 1.00 p.m.—Time; Market Reports, etc.
- 1.15 p.m.—Oxydol's Own Ma Perkins.
- 5.30 p.m.—Uncle Mel.
- 6.00 p.m.—Time. Music; Services.
- 6.25 p.m.—Horoscope; Services.
- 6.30 p.m.—Market Reports.
- 7.30 p.m. to 12.00 mid.—CRC Programs See details top of 1st Col.
- 8.00 p.m.—Boston American Program.
- 8.15 p.m.—M. B. Fineberg's Program.

GOSMAN, "THE SIGN MAN"

269 Union Street :: Saint John, N. B.

CKIC—Wolfville—1010k.

- 12 noon—Studio Program.
- 6.00 p.m.—Studio Program.

CFCY—Charlottetown—630k.

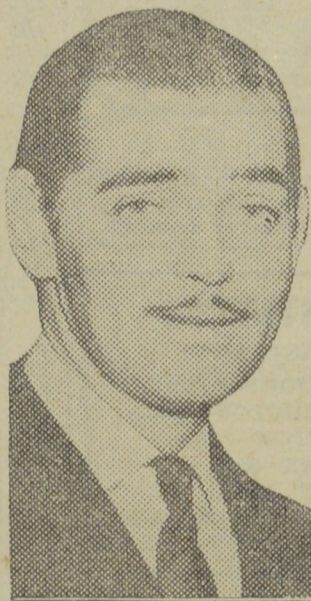
- 12 noon—Peerless Program.
- 12.15 p.m.—Prowse Bros. Program.
- 12.31 p.m.—Stock Quotations.
- 12.40 p.m.—Home Forum Program.
- 1.00 p.m.—Luncheon Program.
- 5.00 p.m.—Outports Program.
- 5.30 p.m.—Moore & McLeod Program.

Theatre Guest Tickets for
 MRS. A. L. MacKENZIE
 207 Duke Street, Saint John, N. B.

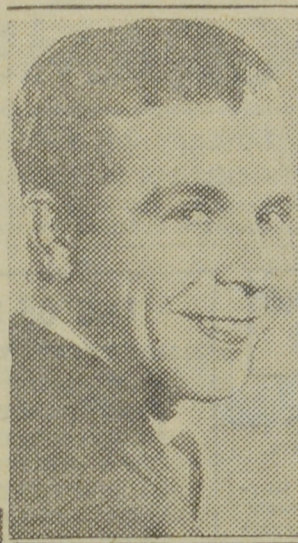
SHIRLEY TEMPLE HOLLYWOOD'S BEST DRAWING CARD



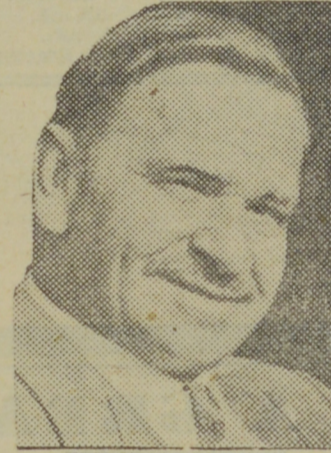
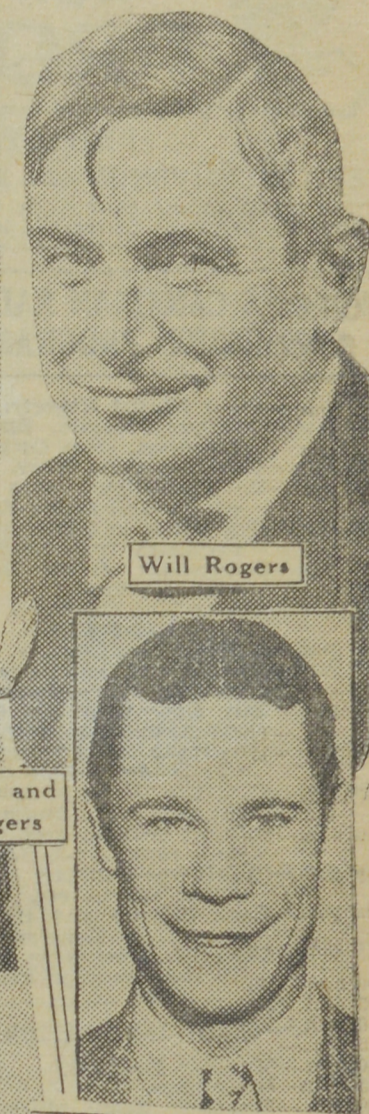
Shirley Temple



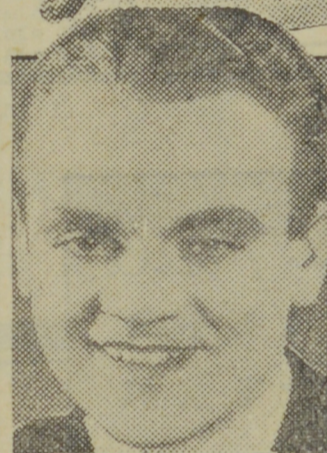
Will Rogers



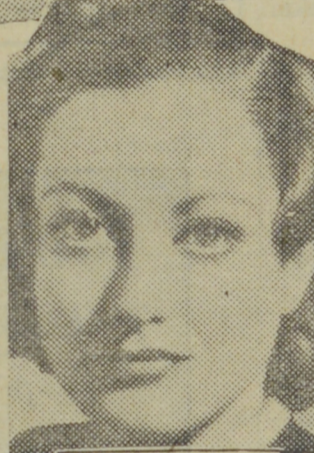
Fred Astaire and
Ginger Rogers



Wallace Beery



James Cagney



Joan Crawford



Claudette Colbert

It was six-and-one-half-year-old Shirley Temple who drew the most patrons to the box offices of movie houses throughout the United States and Canada in 1934-35, according to the annual ranking of the ten biggest money-making stars from September, 1934, to September, 1935, as elected by independent exhibitors. The first ten money-makers in order of their drawing

power were SHIRLEY TEMPLE, the late WILL ROGERS, CLARK GABLE, FRED ASTAIRE and GINGER ROGERS, CLARK GABLE, FRED ASTAIRE and GINGER ROGERS, JOAN CRAWFORD, CLAUDETTE COLBERT, DICK POWELL, WALLACE BEERY, JOE E. BROWN, and JAMES CAGNEY. Exhibitors listed the team of Fred Astaire and Ginger Rogers together in their selection, inasmuch as the two are currently co-starred.

- 6.00 p.m.—Jack Cameron
- 6.15 p.m.—Cudmore Dry Cleaning.
- 6.30 p.m.—Sleepy Town Express.
- 6.45 p.m.—Merchants' Program.
- 7.00 p.m.—Stock Quotations.
- 7.15 p.m.—Tip Top Store Program.
- 7.30 p.m. to 12.00 mid.—CRC Programs See details top of 1st Col.

WJZ—New York—760k.

- NBC RED Network—WBAL (Baltimore), WBZ (Boston), WLW (Cincinnati), WTIC (Hartford), KDKA (Pittsburgh). See Log top 2nd col.
- 2.30 p.m.—Julia Glass, pianist, with Phyllis Kraeuter, "cellist.
- 2.45 p.m.—Dot and Will, drama.
- 3.00 p.m.—Words and Music.
- 3.30 p.m.—NBC Music Guild.
- 4.15 p.m.—Eastman Symphony Orch.
- 5.00 p.m.—Betty and Bob, drama.
- 5.15 p.m.—Gene Arnold's Ranch Boys.
- 5.30 p.m.—NBC Radio Guild.
- 6.30 p.m.—The Singing Lady.
- 6.45 p.m.—Little Orphan Annie, drama
- 7.05 p.m.—James Wilkinson, baritone.
- 7.15 p.m.—Sports Expert, John Tunis.
- 7.30 p.m.—Press-Radio News Service.
- 7.45 p.m.—Muriel Wilson, soprano.
- 8.00 p.m.—Lowell Thomas, news.
- 8.15 p.m.—"Easy Aces," drama.
- 8.30 p.m.—"Nine To Five," drama.
- 8.45 p.m.—Lum and Abner, comedy.
- 8.45 p.m.—Omega Program, with Phil

- Cook, Ladd Trio, White.
- 9.00 p.m.—Music Is My Hobby.
- 9.15 p.m.—NBC Stating Symphony.
- 10.00 p.m.—Death Valley Days, drama.
- 10.30 p.m.—America's Town Meetings.
- 11.30 p.m.—Roy Shield with His Orch.
- 12.05 a.m.—Emil Coleman's Orchestra.
- 12.30 a.m.—Ben Bernie and His Orch.
- 1.00 a.m.—Shandor, the violinist.
- 1.08 a.m.—Henry King and His Orch.
- 1.30 a.m.—Freddy Martin's Orchestra.

WEAF—New York—660k.

- NBC BLUE Network—WGY (Schenectady), WEEI (Boston), WTAM (Cleveland). See Log top 2nd col.
- 4.45 p.m.—The O'Neills, drama.
- 5.00 p.m.—Woman's Radio Review.
- 5.30 p.m.—"Girl Alone," drama.
- 5.45 p.m.—Tintype Tenor.
- 6.30 p.m.—Louise Florea, soprano.
- 7.00 p.m.—Flying Time, aviation.
- 7.20 p.m.—Connie Gates, contralto.
- 7.30 p.m.—Press-Radio News Service.
- 7.35 p.m.—Talk: "New Deal Policies."
- 7.45 p.m.—Billy and Betty, sketch.
- 8.00 p.m.—Amos 'n' Andy, skit.
- 8.15 p.m.—"Popeye the Sailor."
- 8.30 p.m.—Human Side of the News.
- 8.45 p.m.—Life Studies, Tom Powers.
- 9.00 p.m.—Fleischmann Hour, with Rudy Vallee and Orch.
- 10.00 p.m.—Maxwell House Show Boat with Lanny Ross, direc.

- 11.00 p.m.—Bing Crosby with Jim Dorsey's Orchestra.
- 12.00 mid.—Ruby Newman's Orchestra.
- 12.15 a.m.—Leonard Keller's Orchestra.
- 12.35 a.m.—The Minneapolis Symphony Orchestra.
- 1.30 a.m.—Leo Zoilo and His Orch.

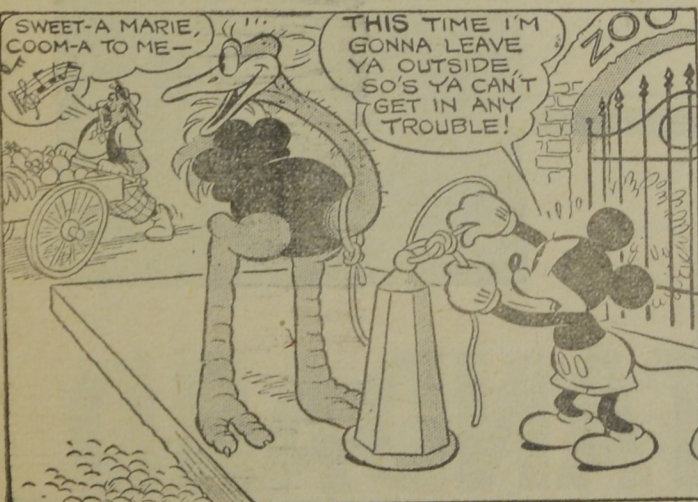
WABC—New York—860k.

- Columbia CBS chain—WCAU (Philadelphia), WGR (Buffalo), WNAO (Boston). See Log at top 2nd col.
- 6.15 p.m.—Jimmy Farrell, songs.
- 6.30 p.m.—All-American Boy.
- 6.45 p.m.—The Goldbergs, drama.
- 7.00 p.m.—Patti Chopain, songs.
- 7.15 p.m.—Parade of Youth.
- 7.30 p.m.—Press-Radio News Service.
- 7.35 p.m.—George Hall and His Orch.
- 7.45 p.m.—Household Music Box.
- 8.00 p.m.—Myrt and Marge, drama.
- 8.15 p.m.—Krueger Musical Toast.
- 8.30 p.m.—Kate Smith's Coffee Time.
- 8.45 p.m.—Boake Carter, news.
- 9.00 p.m.—Harv and Esther, comedy.
- 9.30 p.m.—"The March of Time."
- 10.00 p.m.—Camel Caravan.
- 10.30 p.m.—CBS Dramatic Guild.
- 11.00 p.m.—Heldt's Brigadiers.
- 11.30 p.m.—Phil Cook, Just Another Amateur.
- 12.00 mid.—Guy Lombardo and His Royal Canadians.
- 12.30 a.m.—Isham Jones and His Orch.

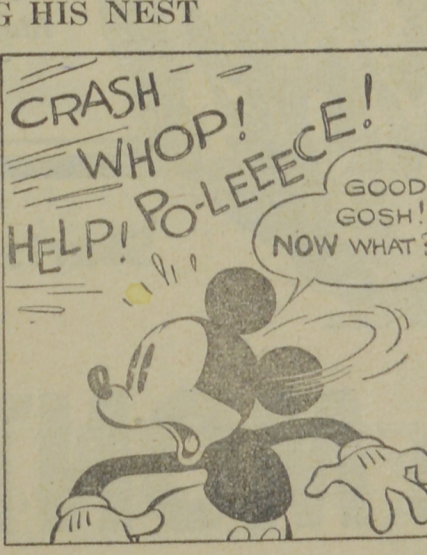
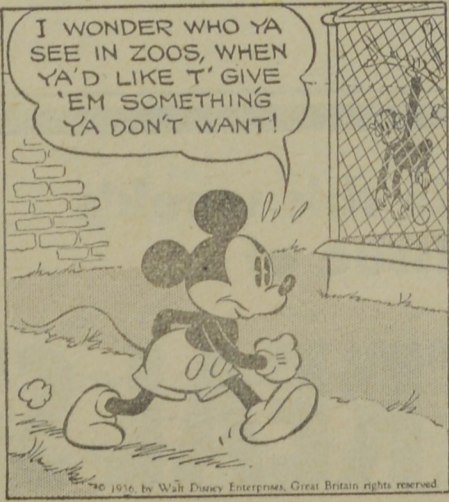
ST. JOHN DRY DOCK & SHIPBUILDING CO., LTD.

SAINT JOHN, N. B.
SHIP REPAIRS OF ALL KINDS.
STRUCTURAL STEEL.
 DESIGNERS AND ERECTORS OF ALL CLASSES OF
STRUCTURAL STEEL WORK

MICKEY MOUSE



FEATHERING HIS NEST



By WALT DISNEY