

# RADIO PROGRAMS

SUNDAY, January 5, 1936

THE TIME GIVEN IN ALL PROGRAMS IS ATLANTIC STANDARD  
 "The Broadcaster" cannot be responsible for errors or omissions in the following programs or for the last-minute changes by stations or sponsors.

## TODAY'S CANADIAN RADIO COMMISSION PROGRAM

- 4.00 p.m.—New York Philharmonic Orchestra.
- 6.00 p.m.—Vesper Hour, Winnipeg.
- 7.00 p.m.—"And It Came To Pass," Biblical drama on story the Ten Commandments.
- 7.30 p.m.—Events of Canadian Interest, from Halifax, N. S.
- 7.45 p.m.—Presenting Soloist Recital.
- 8.00 p.m.—"Garden of Melody," musical tone pictures, Regina.
- 8.30 p.m.—Band Box Revue, Detroit.
- 9.00 p.m.—Radio Concert Canadien.
- 9.30 p.m.—Horace Heidt's Concert Orchestra, from Chicago, Ill.
- 10.00 p.m.—Forgotten Footsteps, drama from Toronto.
- 11.00 p.m.—Atlantic Nocturne, music from Halifax.
- 11.30 p.m.—"Chasing Shadows," from Calgary, Alberta.
- 11.45 p.m.—Canadian Press News Bulletin and Weather Forecast

### CHSJ—Saint John—1120k.

- 11.00 a.m.—Sacred Music.
- 3.45 p.m.—Protestant Orphans' Talk.
- 4.00 p.m.—N. Y. Philharmonic Orch.
- 6.00 p.m.—The Vesper Hour (CRC)
- 7.00 p.m. to 12.00 mid.—Canadian Radio Commission Programs (Details top of 1st. col.)

### GOSMAN, "THE SIGN MAN"

269 Union Street :: Saint John, N. B.

### CFNB—Fredericton—550k.

- 11.00 a.m.—Service from George Street Baptist Church
- 4.00 p.m. to 12.00 mid.—Canadian Radio Commission Progs. See details top of 1st Col.

### CHNS—Halifax—930k.

- 12.30 p.m.—Appeal for Colored Children
- 3.00 p.m.—St. Patrick's Church.
- 4.00 p.m.—N. Y. Philharmonic Orch.
- 6.00 p.m.—Cabinet of Melody. Time.
- 6.30 p.m.—"The King's Men."
- 6.45 p.m.—Nick Shoester and Music.
- 7.30 p.m. to 12.00 mid.—Canadian Radio Commission Programs See details top of 1st col.

### CKIC—Wolfville—1010k.

- 3.00 p.m.—Religious Service.

## BARDSLEY



**HATS FOR MEN**  
 DRESSY—DURABLE  
 BUY YOURS AT FACTORY  
 1 KINC SQUARE

## Enjoyed The Fun



The CBS camera sleuths caught BENAY VENUTA, blonde Columbia song star, sharing in the grand fun around the beautiful studio Christmas tree. And just about the best decoration, as we can see, is the glamorous lady herself. Miss Venuta currently is starred on tour in the musical comedy "Anything Goes" and commutes each Sunday night to the CBS studios to sing in Freddie Rich's "Penthouse Party" at 11.30 p.m., A.S.T.

## LOG OF STATIONS

### MARITIME PROVINCES—

- CHSJ—SAINT JOHN—1120k.
- CFNB—FREDERICTON—550k.
- CKGW—MONCTON—1370k.
- CHNS—HALIFAX—930k.
- CJCB—SYDNEY—1240k.
- CFCY—CHARLOT'TOWN—630k.
- CHCK—CHARLOT'TOWN—1310k.
- CHGS—SUMMERSIDE—1450k.

### UPPER CANADIAN—

- CFCF—MONTREAL—600k.
- CKAC—MONTREAL—730k.
- CRCM—MONTREAL—910k.
- CHNC—NEW CARLISLE—1210k.
- CFRB—TORONTO—690k.
- CRCT—TORONTO—840k.
- CKLW—WINDSOR—1030k.

### UNITED STATES—

- WPG—ATLANTIC CITY—1100k.
- WBAL—BALTIMORE—1060k.
- WLBZ—BANGOR—620k.
- WBZ—BOSTON—990k.
- WEEL—BOSTON—590k.
- WNAC—BOSTON—1230k.
- WGR—BUFFALO—550k.
- WLW—CINCINNATI—700k.
- WTAM—CLEVELAND—1070k.
- WJR—DETROIT—750k.
- WTIC—HARTFORD—1060k.
- WOR—NEWARK—710k.
- WLWL—NEW YORK—1100k.
- WCAU—PHILADELPHIA—1170k.
- KDKA—PITTSBURGH—980k.
- WCSH—PORTLAND—940k.
- WGY—SCHENECTADY—840k.

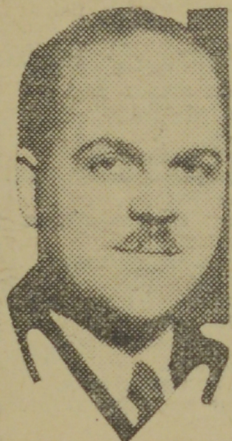
### WJZ—New York—760k.

- NBC RED Network—WBAL (Baltimore), WBZ (Boston), WLW (Cincinnati), WTIC (Hartford), KDKA (Pittsburgh). See Log top 2nd col.
- 6.30 p.m.—Dog Chats.
- 6.45 p.m.—Week-End Review.
- 7.00 p.m.—Velvetone Music.
- 7.30 p.m.—Campana's Grand Hotel.
- 8.00 p.m.—Jack Benny, comedy, songs, chatter, orchestra.
- 8.30 p.m.—Believe It Or Not, Ripley.
- 9.00 p.m.—Musical Comedy Revue.
- 9.45 p.m.—Hendrik Willem van Loon.
- 10.00 p.m.—"Life Is A Song."
- 10.30 p.m.—The Jergen Program, with Walter Winchell, gossip.
- 10.45 p.m.—Paul Whiteman's Musicale.
- 11.30 p.m.—Continental Varieties.
- 12.00 mid.—Dandies of Yesterday.
- 12.10 a.m.—Press-Radio News Service.
- 12.15 a.m.—Shandor, the violinist.
- 12.30 a.m.—Harold Stern and His Orch.
- 1.00 a.m.—Dancing in the Twin Cities
- 1.30 a.m.—Earl Hines with His Orch.

### WEAF—New York—660k.

- NBC BLUE Network—WGY (Schenectady), WEEL (Boston), WTAM (Cleveland). See Log top 2nd col.
- 6.00 p.m.—Penthouse Serenade.
- 6.30 p.m.—Dream Dramas.
- 6.45 p.m.—Music by Richard Himber.
- 7.00 p.m.—The Catholic Hour.
- 7.30 p.m.—Echoes of New York Town.
- 8.00 p.m.—"K-7," secret service story.
- 8.30 p.m.—Fireside Recitals.

## Ted Malone



Ted Malone

One of radio's most popular readers of poetry and home-spun philosophy is Ted Malone, heard on "Between the Bookends." At the present time Ted is one of the leaders in amount of fan mail that is received by CBS artists. His quarter of an hour programs are heard over the nation-wide WABC-Columbia network Sundays through Fridays from 3.00 to 3.15 p.m., A.S.T.

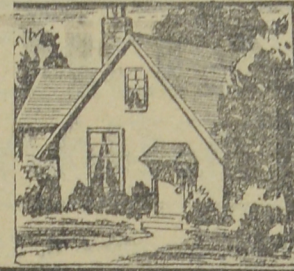
### CFCY—Charlottetown—630k.

- 11.00 a.m.—The Sacred Hour.
- 4.00 p.m. to 12.00 mid.—CRC Programs

**J. & G. McELWAIN** First-Class Auto Body Repairing and Painting  
 AUTO TOPS—AUTO WOODWORK—WELDING  
 >> TRUCK LETTERING A SPECIALTY <<  
 Rothesay Avenue Saint John, N. B. Telephone 3-2878

**Port Royal Pulp & Paper Co., Ltd.**  
 MANUFACTURERS OF  
 HIGH-GRADE BLEACHED SULPHITE  
 SAINT JOHN, N. B.

## FRONT DOORS



A HOUSE IS JUDGED BY ITS FRONT DOOR. An inviting doorway creates a favorable impression. We have very attractive doors in all styles. When Glass is required, we make the panels in the latest designs.

## MURRAY & GREGORY, Ltd.

Phone 3-3242 LUMBER—GLASS—MILLWORK BUILDERS' SUPPLIES Saint John, N. B.

- 8.45 p.m.—Sunset Dreams (Ranch Boys and Morin Sisters, songs)
- 9.00 p.m.—Major Bowes' Amateur Hour
- 10.00 p.m.—The Merry-Go-Round.
- 10.30 p.m.—Album of Familiar Music.
- 11.00 p.m.—General Motors' Concert.
- 12.00 mid.—The Melody Master.
- 12.30 a.m.—Press-Radio News Service.
- 1.00 a.m.—Enric Madriguera's Orch.
- 1.00 a.m.—Willie Bryant's Orchestra.
- 1.30 a.m.—Sammy Kaye and His Orer.

### WABC—New York—860k.

- Columbia CBS chain—WCAU (Philadelphia), WGR (Buffalo), WNAC (Boston). See Log at top 2nd col.
- 4.00 p.m.—The Philharmonic Orchestra of New York.
- 6.00 p.m.—"Melodiana," with Abe Ly-

- 6.30 p.m.—Frank Crumit and Julia Sanderson with Orch.
- 7.00 p.m.—National Amateur Night.
- 7.30 p.m.—Ed. McConnell, songs.
- 7.45 p.m.—"The Voice of Experience."
- 8.00 p.m.—Eddie Cantor, with Parkyakarkas and Orchestra.
- 8.30 p.m.—Phil Baker, with Beetle Bottle and His Orch.
- 9.00 p.m.—To be announced.
- 9.30 p.m.—Leslie Howard, stage star.
- 10.00 p.m.—Ford Sunday Evening Hour
- 11.00 p.m.—Wayne King and His Orch.
- 11.30 p.m.—To be announced.
- 12.00 mid.—Carl Hoff and His Orch.
- 12.30 a.m.—Press-Radio News Service.
- 12.35 a.m.—Isham Jones and His Orch.
- 1.00 a.m.—Frank Dalley and His Orch.
- 1.30 a.m.—Henry Halstead's Orchestra.

## CARLSON'S AUTO PARTS

300 Union Street Saint John, N. B. Phone 3-6188  
 NEW PARTS and ACCESSORIES for All Makes of Cars and Trucks  
 —Our Prices Are the Lowest in the Maritimes—  
 WRITE US FOR CATALOGUE

# WHY

## BUY A

# WILLARD

# ?

80 AMPERE HOUR  
 CAPACITY

# \$7.95

- BECAUSE** only first-quality materials are used in making Willard Batteries.
- BECAUSE** every Willard must pass 74 rigid inspections before it leaves the factory—hence the Willard you buy is **DEPENDABLE**.
- BECAUSE** the Willard that **FITS** your car costs no more than many less dependable batteries.

## Battery & Electric Service, Ltd.

90 Duke Street—Saint John, N. B.



## MICKEY MOUSE

## THE LIFE RAFT!

By WALT DISNEY

THE PIRATE SUBMARINE IS SINKING RAPIDLY, WITH NO LIFEBOATS ABOARD, AND MICKEY'S SUBMARPLANE HAS ROOM FOR ONLY TWO!

