

# RADIO PROGRAMS

MONDAY, January 6, 1936

THE TIME GIVEN IN ALL PROGRAMS IS ATLANTIC STANDARD  
 "The Broadcaster" cannot be responsible for errors or omissions in the following programs or for the last-minute changes by stations or sponsors.

## TODAY'S CANADIAN RADIO COMMISSION PROGRAM

- 7.00 p.m.—Overseas Program, BBC re-broadcast, from Ottawa.
- 7.30 p.m.—Canadian Press News.
- 7.35 p.m.—Sunset Silhouettes with the Garnet Trowell Ensemble
- 8.00 p.m.—Rex Battle With His Orch., from Toronto.
- 8.15 p.m.—Presenting: Lila Valiant, soprano.
- 8.30 p.m.—Young Tim, children's serial direction of Edgar Stone.
- 8.45 p.m.—"A Quarter To Eight," variety show, from Windsor.
- 9.00 p.m.—Show Shop Songs, instrumental and vocal ensemble, from Saint John.
- 9.30 p.m.—Ben Kyte's Varieties, an exchange from Detroit, U.S.
- 10.00 p.m.—C'est Rendezvous, modern vocal ensemble and Orch.
- 10.30 p.m.—Melodic Strings.
- 11.00 p.m.—The Youngbloods of Beaver Bend, rural sketch.
- 11.30 p.m.—Billy Bisset and His Orch., with dance music.
- 11.45 p.m.—Canadian Press News Bulletin and Weather Forecast

### CHSJ—Saint John—1120k.

- 6.00 a.m.—Weather Forecast.
- 7.45 a.m.—Recordings.
- 7.50 p.m.—Weather, News; Music.
- 8.15 a.m.—"Thoughts For Today."
- 8.30 a.m.—Musical Program.
- 10.00 a.m.—"Hour of Good Cheer."
- 11.00 a.m.—Community Defoging.
- 11.30 a.m.—Moods Musicales.
- 12 noon—Musical Program.
- 12.15 p.m.—Wassons' Musical Program.
- 12.30 p.m.—Dorothy's Milk Program.
- 12.45 p.m.—Driscoll's Program.
- 1.00 p.m.—Weather; Recordings.
- 1.15 p.m.—Bustin's Fine Furniture.
- 2.00 p.m.—Rex Battle's Orch., Toronto
- 5.00 p.m.—"On the Air."
- 5.05 p.m.—News; Musical Program.
- 5.30 p.m.—Recordings.
- 6.00 p.m.—"Lucky," Emerson Bros.
- 6.10 p.m.—Capitol Theatre News.
- 6.15 p.m.—Musical Program.
- 6.30 p.m.—Recordings.
- 7.00 p.m.—Tuberculosis Talk.
- 7.20 p.m.—Musical Program.
- 7.30 p.m. to 12.00 mid.—CRC Programs (Details top of 1st col.)
- 9.00 p.m.—Show Shop Songs to CRC.

### CFNB—Fredericton—550k.

- 8.00 a.m.—Musical Clock.
- 8.10 a.m.—"The Listening Post."
- 8.30 a.m.—Enterprise Foundry Prog.
- 9.00 a.m.—Popular Songs.
- 9.15 a.m.—Novelty Program.
- 9.30 a.m.—Maytag Melodies.
- 10.00 a.m.—Concert Period.
- 10.15 a.m.—Tangoes.
- 10.30 a.m.—Piano and Violin.
- 10.45 a.m.—Dance Music.
- 11.00 a.m.—Happy Warrior Hour.
- 12 noon—Purina Program.

## LOG OF STATIONS

### MARITIME PROVINCES—

- CHSJ—SAINT JOHN—1120k.
- CFNB—FREDERICTON—550k.
- CKGW—MONCTON—1370k.
- CHNS—HALIFAX—930k.
- CJCB—SYDNEY—1240k.
- CFCY—CHARLOT'TOWN—630k.
- CHCK—CHARLOT'TOWN—1310k.
- CHGS—SUMMERSIDE—1450k.

### UPPER CANADIAN—

- CFCF—MONTREAL—600k.
- CKAC—MONTREAL—730k.
- CRCM—MONTREAL—910k.
- CHNC—NEW CARLISLE—1210k.
- CFRE—TORONTO—690k.
- CRCT—TORONTO—840k.
- CKLW—WINDSOR—1030k.

### UNITED STATES—

- WPG—ATLANTIC CITY—1100k.
- WBAL—BALTIMORE—1060k.
- WLBZ—BANGOR—620k.
- WBZ—BOSTON—990k.
- WEEL—BOSTON—590k.
- WNAC—BOSTON—1230k.
- WGR—BUFFALO—550k.
- WLW—CINCINNATI—700k.
- WTAM—CLEVELAND—1070k.
- WJR—DETROIT—750k.
- WTIC—HARTFORD—1060k.
- WOR—NEWARK—710k.
- WLWL—NEW YORK—1100k.
- WCAU—PHILADELPHIA—1170k.
- KDKA—PITTSBURGH—980k.
- WCSH—PORTLAND—940k.
- WGY—SCHENECTADY—840k.

- 12.15 p.m.—Building Products' Prog.
- 12.30 p.m.—Sherwin-Williams Musicales.
- 1.00 a.m.—Frigidaire Program.
- 1.30 p.m.—Marconi Radio Hour.
- 2.30 p.m.—Strings and Vocalist.
- 4.30 p.m.—Music Box Revue.
- 5.00 p.m.—Monitor News Bulletins.
- 5.30 p.m.—Dance Music.
- 5.45 p.m.—Concert Songs.
- 6.00 p.m.—Dinner Music.
- 6.15 p.m.—Canada Cement Program.
- 6.30 p.m.—Burgess Battery Program.
- 6.45 p.m.—MacDonald Program.
- 7.00 p.m.—News Bulletins.
- 7.15 p.m.—Weed Chain Program.
- 7.30 p.m. to 12.00 mid.—Canadian Radio Commission Programs (See details top of 1st col.)

### CKCW—Moncton—1370k.

- 8.00 a.m.—Musical Program.
- 8.15 a.m.—News.
- 8.30 a.m.—Devotional Period.
- 8.45 a.m.—Organ Melodies.
- 9.00 a.m.—Popular Music Half-Hour.
- 12 noon—Musical Program.
- 12.15 p.m.—Jack Granger.
- 12.30 p.m.—Popular Music.
- 1.00 p.m.—Noon-Day Musicales.
- 5.00 p.m.—Musical Program.
- 6.00 p.m.—Concert Hour.
- 7.00 p.m.—Popular Music.
- 7.15 p.m.—Real Life Dramas.
- 7.30 p.m. to 12.00 mid.—CRC Programs (See details top of 1st col.)

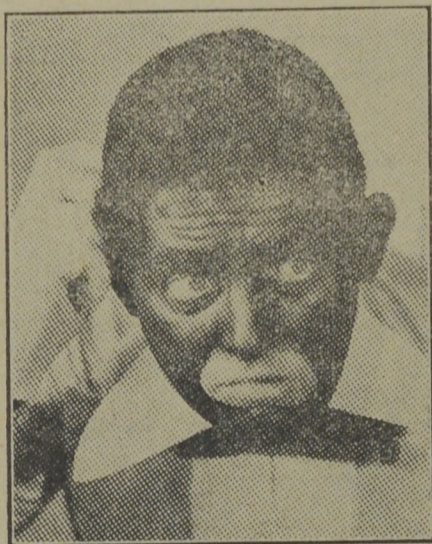
### CHNS—Halifax—930k.

- 10.00 a.m.—Morning Devotions.
- 10.15 a.m.—Musical Program.
- 10.45 a.m.—News Review.
- 10.55 a.m.—Musical Interlude.
- 11.00 a.m.—Woman's Radio Institute.
- 12 noon—Phinney's Victor Program.
- 12.15 p.m.—Services.
- 12.30 p.m.—Crazy Water Crystallers.
- 12.45 p.m.—News Bulletin.
- 1.00 p.m.—Time; Market Reports, etc.
- 1.15 p.m.—Oxydol's Own Ma Perkins.
- 5.30 p.m.—Uncle Mel.
- 6.00 p.m.—Time. Music; Services.
- 6.30 p.m.—Horoscope; Services.
- 6.45 p.m.—Market Reports.
- 7.00 p.m.—Time. Film Flashes.
- 7.15 p.m.—Reid's Hawaiian Guitars.
- 7.25 p.m.—Real Life Dramas.
- 7.30 p.m. to 12.00 mid.—CRC Programs (See details top of 1st col.)

### CKIC—Wolfville—1010k.

- 12 noon—Studio Program.
- 2.00 p.m.—Studio Program.

## Air Waves Veteran



That darktown dandy, MALCOLM (Whitewash) CLAIRE, has been in radio for five years. He is now with the Sinclair Minstrels, heard over WJZ each Monday at 10 p.m.

### CFCY—Charlottetown—630k.

- 12 noon—Musical Program.
- 12.31 p.m.—Stock Quotations.
- 12.40 p.m.—Home Forum Program.
- 1.00 p.m.—Luncheon Program.
- 5.00 p.m.—Outports Program.
- 5.45 p.m.—Mother's Own Tea.
- 6.00 p.m.—Kelly & McInnis.
- 6.15 p.m.—Musical Program.
- 6.30 p.m.—Sleepy Town Express.
- 6.45 p.m.—Davis & Law ence.
- 7.00 p.m.—Stock Quotations.
- 7.15 p.m.—S. A. MacDonald.
- 7.30 p.m. to 12.00 mid.—CRC Programs (See details top of 1st Col.)

### COSMAN, "THE SIGN MAN"

269 Union Street :: Saint John, N. B.

### WJZ—New York—760k.

- NBC RED Network—WBAL (Baltimore), WEZ (Boston), WLW (Cincinnati), WTIC (Hartford), KDKA (Pittsburgh). See Log top 2nd col.
- 4.30 p.m.—Terri La Franconi, tenor.
- 4.45 p.m.—King's Jesters, qua tette.
- 5.15 p.m.—Betty and Bob, sketch.
- 6.00 p.m.—Junior Radio Journal.
- 6.15 p.m.—Jackie Heller, tenor.
- 6.30 p.m.—The Singing Lady.
- 6.45 p.m.—Little Orphan Annie, drama.
- 7.00 p.m.—Esso News Reporter.
- 7.05 p.m.—U. S. Army Band Concert.
- 7.30 p.m.—Press-Radio News Service.
- 7.35 p.m.—The Choristers.
- 7.45 p.m.—Lowell Thomas, news.
- 8.00 p.m.—Dinner Concert, organ.
- 8.15 p.m.—Capt. Tim's Adventures.
- 8.30 p.m.—Lum and Abner, comedy.
- 8.45 p.m.—Sylvia Froos, blues singer.
- 9.00 p.m.—Fibber McGee and Molly.
- 9.30 p.m.—Evening in Paris.
- 10.00 p.m.—Sinclair's Greater Minstrels
- 10.30 p.m.—Princess Pat Revue.
- 11.00 p.m.—Ray Knight's Cuckoo Hour.
- 11.30 p.m.—To be announced.
- 12.00 mid.—Esso News Reporter.
- 12.05 a.m.—Dorothy Lamour, soprano.
- 12.15 a.m.—Ink Spots, Negro quartette.
- 12.30 a.m.—Ray Noble and His Orch.
- 1.00 a.m.—Shandor, the violinist.
- 1.08 a.m.—Howard Lally and His Orch.
- 1.30 a.m.—Don Bestor with His Orch.

### WEAF—New York—660k.

- NBC BLUE Network—WGY (Schenectady), WEEL (Boston), WTAM (Cleveland). See Log top 2nd col.
- 4.30 p.m.—Vic and Sade, comedy.
- 4.45 p.m.—The O'Neills, drama.
- 5.00 p.m.—Woman's Radio Review.
- 5.30 p.m.—"Girl Alone," drama.
- 5.45 p.m.—Grandpa Burton, humor.
- 6.00 p.m.—Al Pearce and His Gang.
- 6.30 p.m.—Tom Mix Adventures.
- 6.45 p.m.—Clara, Lu 'n' Em, skit.
- 7.00 p.m.—Flying Time.

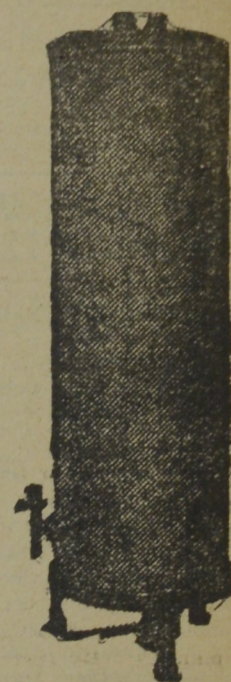
## There's a Warning in Tired Eyes!

Headaches and fatigue follow the warning of tired eyes . . . and they may lead to more serious ills, if the cause is not corrected.

**BOYANER BROS**  
 Optometrists 00 III Charlott

... 50 to 85 Gallons of Hot Water Daily with a

# THRIFT Automatic GAS Hot Water Heater



Absolutely no attention required. You may have at your convenience 50 to 85 gallons of HOT WATER DAILY and at OUR SPECIAL MONTHLY FLAT RATES. This Heater is sold on very convenient terms by—

## New Brunswick Power Co.

ASSURED Saint John, N. B. SERVICE

### HE FELL FOR HER

Jones had the boiled-owl look and sorry-for-himself appearance of a man who is suffering acutely from morning afterishness.

"You are not looking yourself at all," a friend of his remarked when the boss had gone out of the room.

"No," answered Jones, lugubriously, as a man attending his own funeral. "The fact is, I came a dreadful thud last night."

"How did you manage that?" murmured his friend, sympathetically.

"Well, it was like this old chap," said Jones, with his head in his hands. "The wife was talking, do you see, talking and talking and talking."

"Yes. Yes! Mine's like that. They're all like that. But what happened?"

"Well, it was my fault. I shouldn't have done it, I know, but I hung on to every word she said."

"Very foolish, indeed," said his friend, impatiently. "And what happened then?"

"Her voice broke," groaned Jones.

Theatre Guest Tickets for MISS VIOLET THOMPSON  
 159 Waterloo St., Saint John, N. B.

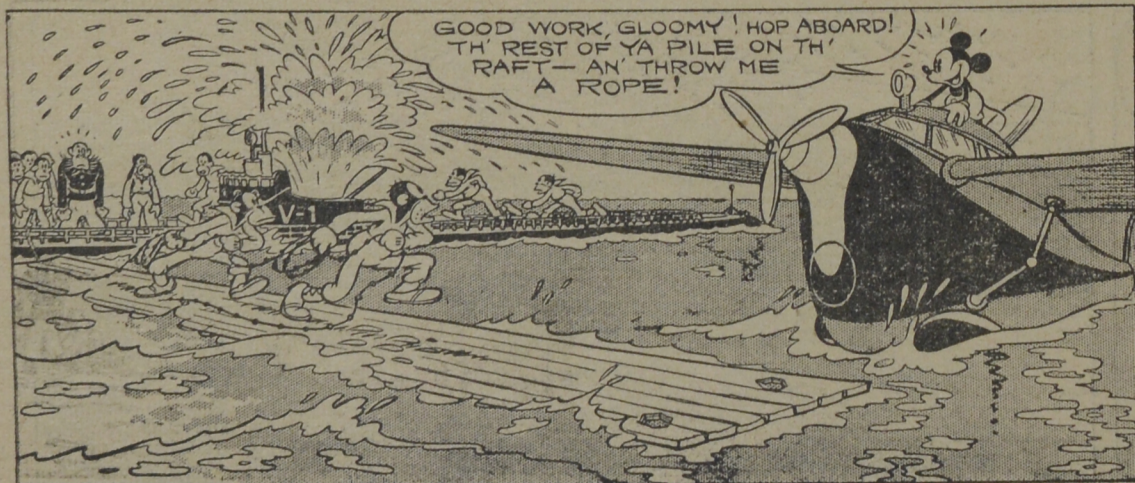
## E. S. STEPHENSON & CO., LIMITED

Nelson Street, Saint John, N. B.  
 ENGINEERS MANUFACTURERS AGENTS  
 SPECIALIZING IN MECHANICAL and ELECTRICAL EQUIPMENT

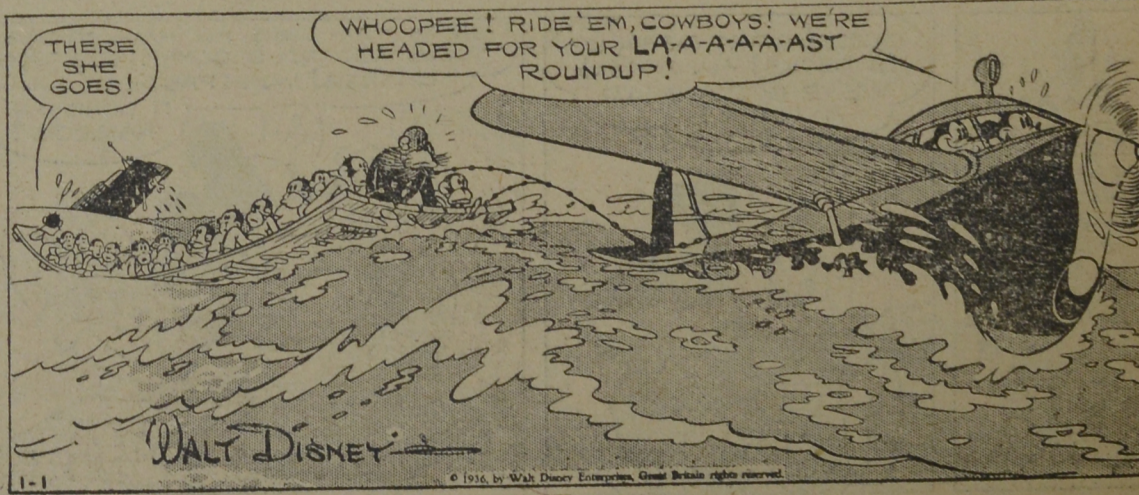
## MARITIME OIL & SUPPLY CO., LTD.

81 Prince William Street Saint John, N. B.  
 Distributors of Alemite Products and Lubricating Equipment  
 Stewart-Warner Radios  
 Evinrude and Elto Outboard Motors and Power Lawn Mowers  
 Alemite Lubricating Equipment and All Makes of Outboards Repaired and Serviced.

## MICKEY MOUSE



## IN TOW



By WALT DISNEY