

RADIO PROGRAMS

FRIDAY, January 10, 1936

THE TIME GIVEN IN ALL PROGRAMS IS ATLANTIC STANDARD
 "The Broadcaster" cannot be responsible for errors or omissions in the following programs or for the last-minute changes by stations or sponsors.

TODAY'S CANADIAN RADIO COMMISSION PROGRAM

- 6.45 p.m.—Stock Market Reports.
- 7.00 p.m.—Overseas Program. BEC re-broadcast, from Ottawa.
- 7.30 p.m.—Canadian Press News.
- 7.35 p.m.—By Candlelight, with Gareth Trowell String Ensem.
- 8.00 p.m.—Rex Battle and His Concert Orchestra, from Toronto.
- 8.15 p.m.—Presenting: Jeanne Desjardins, soprano.
- 8.30 p.m.—Young Tim, children's serial with Edgar Stone.
- 8.45 p.m.—Surprise Box, variety.
- 9.00 p.m.—Live, Laugh and Love, orchestra with soloists.
- 9.30 p.m.—Ben Kyte with His Orch., exchange from Detroit.
- 10.00 p.m.—"Anything Goes," musical variety, from Halifax.
- 10.30 p.m.—Canadian Concert Hall of the Air, with Jean Belland cellist, and Orchestra directed by J. J. Gagnier.
- 11.00 p.m.—"Up-to-the-Minute," news, music, sports, etc.
- 11.30 p.m.—Gene Fogarty and His Orchestra for Dancing.
- 11.45 p.m.—Canadian Press News Bulletin and Weather Forecast

CHSJ—Saint John—1120k.

- 6.00 a.m.—Weather Forecast.
- 7.45 a.m.—Recordings.
- 7.50 p.m.—Weather; News; Music.
- 8.15 a.m.—"Thoughts For Today."
- 8.30 a.m.—Musical Program.
- 9.45 a.m.—Mason Remedies, "Raymar."
- 10.00 a.m.—"Hour of Good Cheer."
- 11.05 a.m.—Community Doings.
- 11.30 a.m.—Moods Musicales.
- 12 noon.—Musical Program.
- 12.05 p.m.—Clint Regan's Boys' Shop.
- 12.15 p.m.—Wassons' Musical Program
- 12.30 p.m.—Ideal Stores' Musicales.
- 12.45 p.m.—Driscoll's Program.
- 1.00 p.m.—Weather, Recordings.
- 1.15 p.m.—Bustin's Fine Furniture.
- 1.20 p.m.—Musical Program.
- 2.30 p.m.—Rex Battle's Orch., Toronto
- 5.00 p.m.—"On the Air."
- 5.05 p.m.—News; Musical Program.
- 5.30 p.m.—Musical Program.
- 5.45 p.m.—United Thrift Store Ltd.
- 5.50 p.m.—Musical Program.
- 6.00 p.m.—"Lucky," Emerson Bros.
- 6.10 p.m.—Capitol Theatre News.
- 6.15 p.m.—Musical Program.
- 6.45 p.m.—Leinster St. Garage Program
- 7.00 p.m.—Simpson's "Easy Chair."
- 7.15 p.m.—C. & E. Everett's Program.
- 7.30 p.m. to 12.00 mid.—CRC Programs
- 8.00 p.m.—Dodd's Radio Short Story.
- 8.15 p.m.—Wills Products' Program.

See details top of 1st col.

CFNB—Fredericton—550k.

- 8.00 a.m.—Musical Clock.
- 8.30 a.m.—"The Listening Post."
- 9.00 a.m.—Enterprise Foundry Prog.
- 9.30 a.m.—Maytag Melodies.
- 10.00 a.m.—Concert Period.
- 10.15 a.m.—Tangoes.
- 10.30 a.m.—Piano and Violin.
- 10.45 a.m.—Dance Music.
- 11.00 a.m.—Happy Warrior Hour.
- 12 noon.—Purina Program.
- 12.15 p.m.—Building Products' Prog.
- 12.30 p.m.—Sherwin-Williams Musicales.
- 1.00 a.m.—Frigidaire Program.
- 1.30 p.m.—Marconi Radio Hour.
- 2.30 p.m.—Royal York Orch., Toronto.
- 4.30 p.m.—Musical Comedy Memories.
- 5.00 p.m.—Monitor News Bulletins.
- 5.30 p.m.—Weed Chain Program.
- 5.45 p.m.—Dance Music.
- 6.00 p.m.—Aladdin Program.
- 6.15 p.m.—Canada Cement Program.
- 6.30 p.m.—Burgess Battery Program.
- 6.45 p.m.—MacDonald Program.
- 7.00 p.m.—News Bulletins.
- 7.15 p.m.—Dodd's Radio Short Story.
- 7.30 p.m. to 12.00 mid.—CRC Programs

See details top of 1st Col.

CKCW—Moncton—1370k.

- 8.00 a.m.—Musical Program.
- 8.10 a.m.—News Items.
- 8.30 a.m.—Devotional Period.
- 8.45 a.m.—Organ Melodies.
- 9.00 a.m.—Popular Music Half-Hour.
- 9.15 a.m.—Home Forum.
- 12 noon.—Musical Program.
- 12.15 p.m.—Jack Grainger.
- 1.00 p.m.—Noon-Day Musicales.
- 12.30 p.m.—Popular Music.
- 5.00 p.m.—Musical Program.
- 6.00 p.m.—Concert Hour.
- 7.00 p.m.—Biscuit Boys.
- 7.15 p.m.—Real Life Dramas.
- 7.30 p.m. to 12.00 mid.—CRC Programs

See details top of 1st Col.

CHNS—Halifax—930k.

- 10.00 a.m.—Morning Devotions.
- 10.15 a.m.—Musical Program.
- 10.45 a.m.—News Review.
- 10.55 a.m.—Musical Interlude.
- 11.00 a.m.—Woman's Radio Institute.
- 12 noon.—Phinney's Victor Program.
- 12.15 p.m.—Services.
- 12.30 p.m.—Crazy Water Crystallizers.
- 12.45 p.m.—News Bulletin.
- 1.00 p.m.—Time; Market Reports, etc.
- 1.15 p.m.—Oxydol's Own Ma Perkins.
- 2.00 p.m.—Dept. of Education.

LOG OF STATIONS

MARITIME PROVINCES—

- CHSJ—SAINT JOHN—1120k.
- CFNB—FREDERICTON—550k.
- CKGW—MONCTON—1370k.
- CHNS—HALIFAX—930k.
- CJCB—SYDNEY—1240k.
- CFY—CHARLOTTOWN—630k.
- CHCK—CHARLOTTOWN—1310k.
- CHGS—SUMMERSIDE—1450k.

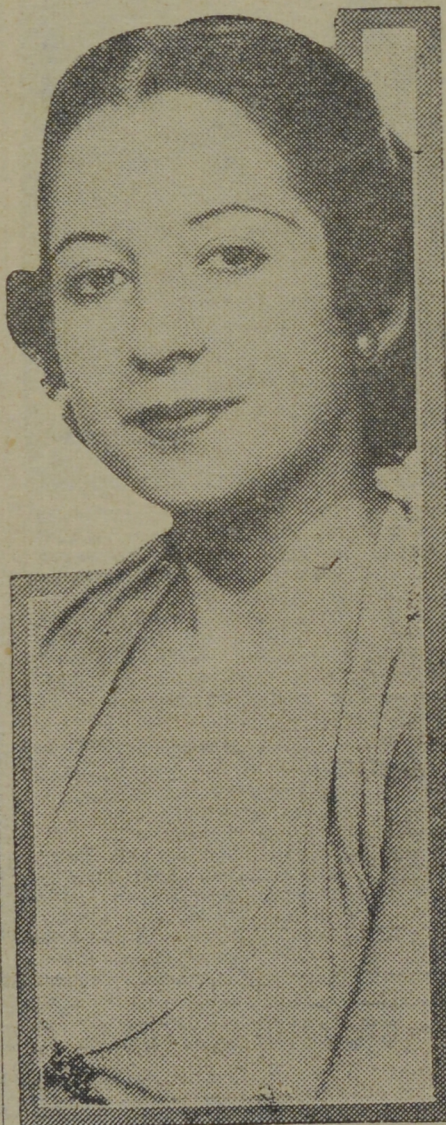
UPPER CANADIAN—

- CFCF—MONTREAL—600k.
- CKAC—MONTREAL—730k.
- CRCM—MONTREAL—910k.
- CHNC—NEW CARLISLE—1210k.
- CFRE—TORONTO—890k.
- CRCR—TORONTO—840k.
- CKLW—WINDSOR—1030k.

UNITED STATES—

- WPG—ATLANTIC CITY—1100k.
- WBAL—BALTIMORE—1060k.
- WLBZ—BANGOR—620k.
- WBZ—BOSTON—990k.
- WEEL—BOSTON—590k.
- WNAC—BOSTON—1230k.
- WGR—BUFFALO—550k.
- WLW—CINCINNATI—700k.
- WTAM—CLEVELAND—1070k.
- WJR—DETROIT—750k.
- WTIC—HARTFORD—1060k.
- WOR—NEWARK—710k.
- WLWL—NEW YORK—1100k.
- WCAU—PHILADELPHIA—1170k.
- KDKA—PITTSBURGH—980k.
- WCSE—PORTLAND—940k.
- WGY—SCHENECTADY—840k.

Blues By Miss Blue



A youngster in years and new to radio is BONNIE BLUE. Discovered by Mark Warnow, she was given a berth on his program and is now heard with his Blue Velvet Orchestra over the WABC-Columbia network each Friday from 6.00 to 6.30 p.m., A.S.T. Blues, and the lighter kinds of popular ditties are her specialty.

- 5.30 p.m.—Uncle Mel.
- 6.00 p.m.—Time Music; Services.
- 6.30 p.m.—Horoscope; Services.
- 6.45 p.m.—Market Reports.
- 7.00 p.m.—Birks' Time, Pollyanna.
- 7.25 p.m.—Real Life Dramas.
- 7.30 p.m. to 12.00 mid.—CRC Programs (Details top of 1st. col.)

CKIC—Wolfville—1010k.

- 12 noon.—Studio Program.
- 6.00 p.m.—Studio Program.

Radio Fashions



DORIS WESTER (left) and CONNIE GATES were two of the "Amateur Models" in NBC's Winter Fashion Show of the Air. Doris wears a black and white "radio print"—so named because if you put all its motifs together you'd have a radio receiving set! Connie wears a snappy cruise costume—tailored jacket of nubby linen and scarf, skirt and belt of ginger brown and white tweed.

CFCY—Charlottetown—630k.

- 12 noon.—Musical Program.
- 12.31 p.m.—Stock Quotations.
- 12.40 p.m.—Home Forum Program.
- 1.00 p.m.—Luncheon Music.
- 5.00 p.m.—Outports Program.
- 5.45 p.m.—Mother's Own Tea.
- 6.00 p.m.—Kelly & McInnis.
- 6.15 p.m.—Musical Program.
- 6.30 p.m.—Sleepy Town Express.
- 6.45 p.m.—Davis & Lawrence Co.
- 7.00 p.m.—Stock Quotations.
- 7.15 p.m.—S. A. MacDonald.
- 7.30 p.m. to 12.00 mid.—CRC Programs

WJZ—New York—760k.

- NBC RED Network—WBAL (Baltimore), WBZ (Boston), WLW (Cincinnati), WTIC (Hartford), KDKA (Pittsburgh). See Log top 2nd col.
- 5.45 p.m.—Strolling Songsters.
- 6.00 p.m.—Thurns' Bavarian Orch.
- 6.30 p.m.—The Singing Lady.
- 6.45 p.m.—Little Orphan Annie.
- 7.05 p.m.—Animal News Club.
- 7.15 p.m.—Mary Small, songs.
- 7.30 p.m.—Press-Radio News Service.
- 7.35 p.m.—The King's Guard.
- 7.45 p.m.—Lowell Thomas, news.
- 8.00 p.m.—Dinner Concert.
- 8.15 p.m.—Capt. Tim's Adventures.
- 8.30 p.m.—Lum and Abner, comedy.
- 8.45 p.m.—Sylvia Froos, blues singer.
- 9.00 p.m.—Irene Rich, musical star.
- 9.15 p.m.—Bob Crosby with His Orch.
- 9.30 p.m.—Kellogg's College Prom.
- 10.00 p.m.—To be announced.
- 11.00 p.m.—Nickelodeon, comedy, songs and melodrama.
- 11.30 p.m.—The Other Americas.
- 12.05 a.m.—Dorothy Lamour, soprano.
- 12.15 a.m.—Ink Spots, Negro quartette.
- 12.30 a.m.—Emil Coleman's Orchestra.
- 1.00 a.m.—Shandor, the violinist.
- 1.08 a.m.—Ruby Newman's Orchestra.
- 1.30 a.m.—George Duffy with His Orch.

COSMAN, "THE SIGN MAN"

269 Union Street :: Saint John, N. B.

WEAF—New York—660k.

- NBC BLUE Network—WGY (Schenectady), WEEL (Boston), WTAM (Cleveland). See Log top 2nd col.
- 5.00 p.m.—Woman's Radio Review.
- 5.30 p.m.—Girl Alone, drama.
- 5.45 p.m.—Grandpa Burton, sketch.
- 6.00 p.m.—Al Pearce and His Gang.
- 6.30 p.m.—Tom Mix and His Shooters.
- 6.45 p.m.—Clara, Lu 'n' Em.
- 7.00 p.m.—Flying Time.
- 7.20 p.m.—Lee Gordon with His Orch.
- 7.30 p.m.—Press-Radio News Service.
- 7.45 p.m.—Billy and Betty, drama.
- 8.00 p.m.—Amos 'n' Andy, sketch.
- 8.15 p.m.—Uncle Ezra's Radio Station.
- 8.30 p.m.—Frances Adair, soprano.
- 8.45 p.m.—The Fox Fur Trappers.
- 9.00 p.m.—Cities Service Concert Orch soloist, quartette, orch.

10.00 p.m.—"Waitz Time," with Frank Munn, tenor.

- 10.30 p.m.—True Story Hour.
- 11.00 p.m.—The First Nighter, sketch.
- 11.30 p.m.—Pop Revue.
- 12.00 mid.—George R. Holmes, news.
- 12.15 a.m.—Leonard Keller's Orchestra
- 12.30 a.m.—Enric Madriguera's Orch.
- 12.45 a.m.—Jesse Crawford, organist.
- 1.00 a.m.—Leon Belasco and His Orch
- 1.30 a.m.—L. Romanelli's Orchestra.

WABC—New York—860k.

- Columbia CBS chain—WCAU (Phil adelphia), WGR (Buffalo), WNAC (Boston). See Log at top 1st col (Boston). See Log at top 2nd col
- 5.00 p.m.—Vivian Della Chiesa, songs.
- 5.15 p.m.—U. S. Army Band Concert.
- 5.45 p.m.—Tea at the Ritz.
- 6.00 p.m.—Terry and Ted Adventures
- 6.15 p.m.—Buddy Clark, baritone.
- 6.30 p.m.—Jack Armstrong, drama.
- 6.45 p.m.—To be announced.
- 7.00 p.m.—To be announced.
- 7.15 p.m.—Bobby Benson, Sunny Jim
- 7.30 p.m.—Press-Radio News Service.
- 7.45 p.m.—Kaltenborn Edits the News.
- 8.00 p.m.—Myrt and Marge, drama.
- 8.15 p.m.—The Minstrel Man.
- 8.45 p.m.—Boake Carter, news.
- 9.00 p.m.—Flying Red Horse Tavern.
- 9.30 p.m.—Broadway Varieties.
- 10.00 p.m.—Hollywood Hotel, drama, et
- 11.00 p.m.—Richard Himber and Orch
- 11.30 p.m.—World Peaceways Program.
- 12.00 mid.—Louis Armstrong's Orch.
- 1.00 a.m.—Vince Lopez and His Orch.
- 1.30 a.m.—Will Osborne and His Orch.

SMILES

CHARACTER REVEALED

"I often think you can tell people's character by their gardens."

"I do, too. There's Miss Matchie, who is as mercenary as she can be, and the prominent plants in her gardens are moneywort and marigold."

QUITE RIGHT

An agitated assistant rushed up to the manager of the big store. "We've just caught a woman shoplifting."

"What has she taken?" asked the manager.

"Fifty yards of elastic," replied the assistant.

"Then just tell her she's in for a long stretch," ordered the manager.

Many Old Vessels Junked To Make Way for New Craft

Revival of World Trade Indicated in Movements of Shipping.

There has been a great mortality among ships since 1934 due to the demand for more up to date vessels to meet the requirements of world trade today, states the Industrial Department of the Canadian National Railways. During that time, according to Lloyd's register, 652 vessels, representing over 1,843,000 tons have been, are under process of or about to be broken up. In addition 321,000 tons have been lost due to casualty or stress of weather. At the end of June, 1935, there were 167 new vessels under Lloyd's classification under construction, representing 929,038 gross tons, or 72 per cent. of the world total, of which 57 per cent. was credited to Great Britain. During the year 1934-35 280 vessels were put into commission under Lloyd's, an increase of 115.5 per cent. of the world tonnage, with Great Britain accounting for 398,703 tons and elsewhere 356,611. In 1913-14 there were 2,020,185 tons of new shipping registered by Lloyd's and in 1933-34, 350,430 tons. There has been a steady reduction in laid-up tonnage indicative of the revival in world trade, it having fallen from 12,000,000 tons in two years ago to 8,000,000 tons last year and there is a further drop to 5,500,000 tons, or a total drop of 7,500,000 tons in three years.

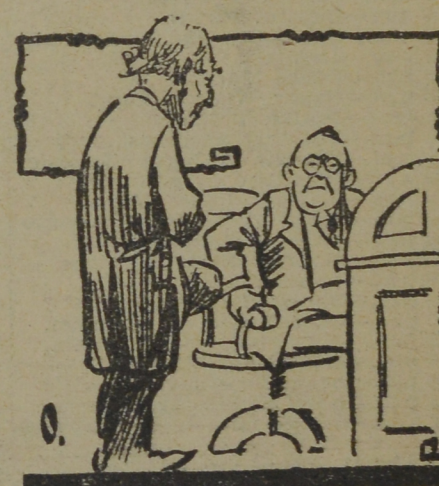
PLENTY

In days of old when nights were cold

It took two fleeces from the fold to dress a lady fair. But in these days of jazz and bob

A little silkworm does the job, with yards galore to spare.

NO RAISE FOR HIM



"Sir, my expenses at home are increasing and I am growing old in your employ, and—"

"Well, what do you expect me to do—furnish you with monkey glands."

HIS ONLY CHANCE

"Yes, it is really remarkable," observed mother at the head of the table. "Clifford seems to eat twice as much chicken when we have visitors."

"Indeed!" exclaimed the lady visitor. "And, pray, why is that, Clifford?"

"Cause that's the only time we have it!" replied the truthful lad.

LOOK BEFORE YOU LEAP

Togo, the Japanese servant, walked into his mistress' boudoir one morning unannounced.

"You must not come into my room without knocking first, Togo," said the lady. "I might be dressing."

"Oh, no, madam," replied Togo. "I always peak through the kleehole."

"Automobile Springs of Quality" OLD SPRINGS RE-CONDITIONED AXLES RE-SET

SAINT JOHN SPRING WORKS J. E. ARROWSMITH, Manager. 81-83 Thorne Ave., Saint John, N. B.