

# RADIO PROGRAMS

SATURDAY, May 16, 1936

THE TIME GIVEN IN ALL PROGRAMS IS ATLANTIC STANDARD. "The Broadcaster" cannot be responsible for errors or omissions in the following programs or for the last-minute changes by stations or sponsors.

## TODAY'S CANADIAN RADIO COMMISSION PROGRAM

- 6.00 p.m.—Closing Stock Quotations, on Montreal Markets.
- 6.15 p.m.—Varieties, from Toronto.
- 6.30 p.m.—Markowsky and His Dinner Music, from Ottawa.
- 7.00 p.m.—Presenting: Nellie Smith, contralto, from Toronto.
- 7.15 p.m.—Luigi Romanelli with His Dinner Music, Toronto.
- 7.30 p.m.—Captain Jack, sea stories for the children, Halifax.
- 7.45 p.m.—Romantic Piano Duo, from Montreal.
- 8.00 p.m.—Bert Anstice and His Boys with Hill-Billy Music.
- 8.30 p.m.—Concert by Boston Symphony Orchestra.
- 9.00 p.m.—Boston Pop Concert.
- 9.30 p.m.—Let's Go To The Music Hall, old-time music hall music.
- 10.00 p.m.—Musical Merry-Go-Round in Hits of the Week, Toronto.
- 10.35 p.m.—Lloyd Huntley and His Orch.
- 10.45 p.m.—Canadian Press News Bulletin and Weather Forecast.
- 11.00 p.m.—CRBC Time Signal.
- 11.00 p.m.—Across the Border, exchange from New York City.

### CHSJ—Saint John—1120k.

- 6.00 a.m.—Weather Forecast.
- 7.45 a.m.—News; Weather, Music.
- 8.15 a.m.—"Thoughts For Today."
- 8.45 a.m.—Musical Program.
- 9.45 a.m.—"Hour of Good Cheer."
- 11.30 a.m.—Prof. Mem-O-Rea.
- 11.45 a.m.—Crazy Water Crystalizers.
- 12 noon—Musical Program.
- 12.15 p.m.—Wassons' Musical Program.
- 12.45 p.m.—Ideal Stores' Musicale.
- 1.00 p.m.—Driscolls' Program.
- 1.15 p.m.—City Wet Wash Program.
- 1.30 p.m.—Rex Battle's Orch., Toronto.
- 4.45 p.m.—Jack and Jill.
- 5.00 p.m.—"On the Air."
- 5.05 p.m.—News; Musical Program.
- 5.30 p.m.—Popular Dance Music.
- 6.00 p.m.—Capitol Theatre News.
- 6.05 p.m.—to 12.00 mid.—CRC Programs (See details top of 1st col.)
- 6.30 p.m.—Prof. Mem-O-Rea.
- 7.45 p.m.—Playlet.

### CFNB—Fredericton—550k.

- 8.00 a.m.—Musical Clock.
- 8.30 a.m.—M. M. A. Talk.
- 8.35 a.m.—"The Listening Post."
- 9.00 a.m.—Birthday Party (Children's)
- 9.30 a.m.—Madame Zari.
- 10.15 p.m.—Thor Program.
- 10.45 a.m.—Enterprise Foundry Prog.
- 11.00 a.m.—Happy Warrior Hour.
- 12 noon—Purina Program.
- 12.15 p.m.—Building Products' Program
- 12.30 p.m.—Sherwin-Williams' Musicale.
- 1.00 a.m.—Frigidaire Program.
- 1.30 p.m.—Royal York Concert Orch.
- 2.00 p.m.—Marconi Radio Hour.
- 4.30 p.m.—Tea Dance.
- 4.45 p.m.—Burgess Battery Program.
- 5.00 p.m.—Monitor News Bulletins.
- 5.30 p.m.—All-Request Program.
- 6.00 p.m.—Fireside Program.
- 6.15 p.m.—Canada Cement Program.
- 6.30 p.m.—C.C.M. Program.
- 6.45 p.m.—MacDonald Program.
- 7.00 p.m.—Valley Motors' Program.
- 7.10 p.m.—News Bulletin.
- 7.15 p.m.—Souvenirs in Rhythm.
- 7.30 p.m.—CRC Programs. (See details at top of 1st column)

### CKCW—Moncton—1370k.

- 8.00 a.m.—Rise and Shine.
- 8.15 a.m.—Times' Newscast.
- 8.30 a.m.—Devotional Period.
- 8.45 a.m.—The Children's Hour.
- 9.00 a.m.—Sweet Music.
- 9.15 a.m. to 9.30—Swinging Along.
- 12 noon—Luncheon Dance.
- 12.15 p.m.—Transcript Newscast.
- 12.30 p.m.—Live Stock Reports.
- 12.30 p.m.—Betsy Bee Hive.
- 12.45 p.m.—Music.
- 1.00 p.m.—The Variety Show.
- 1.30 p.m. to 2.00—Waltz Time.
- 5.00 p.m.—Your Hit Parade.

## LOG OF STATIONS

### MARITIME PROVINCES—

- CHSJ—SAINT JOHN—1120k.
- CFNB—FREDERICTON—550k.
- CHNS—HALIFAX—930k.
- CJCB—SYDNEY—1240k.
- CFCY—CHARLOTTOWN—630k.
- CHCK—CHARLOTTOWN—1310k.
- CHGS—SUMMERSIDE—1450k.

### UPPER CANADIAN—

- CFCF—MONTREAL—600k.
- CKAC—MONTREAL—730k.
- CRCM—MONTREAL—910k.
- CHNC—NEW CARLISLE—1210k.
- CFRB—TORONTO—690k.
- CRCT—TORONTO—840k.
- CKLW—WINDSOR—1030k.

### UNITED STATES—

- WPG—ATLANTIC CITY—1100k.
- WBAL—BALTIMORE—1060k.
- WLBZ—LANGOR—620k.
- WBZ—BOSTON—990k.
- WEEL—BOSTON—590k.
- WNAC—BOSTON—1230k.
- WGR—BUFFALO—550k.
- WLW—CINCINNATI—700k.
- WTAM—CLEVELAND—1070k.
- WJR—DETROIT—750k.
- WTIC—HARTFORD—1060k.
- WOR—NEWARK—710k.
- WLWL—NEW YORK—1100k.
- WCAU—PHILADELPHIA—1170k.
- KDKA—PITTSBURGH—980k.
- WOSH—PORTLAND—940k.
- WGY—SCHENECTADY—840k.

- 6.00 p.m.—Hawaiian Shadows.
- 6.15 p.m.—The Barn Dance.
- 6.25 p.m.—Imperial News Flashes.
- 6.30 p.m.—Radio Commission Program
- 6.45 p.m.—Twilight Hour.
- 7.30 p.m. to 12.00 mid.—CRC Programs

### CHNS—Halifax—930k.

- 5.15 p.m.—Uncle Mel.
- 6.00 p.m.—Market Reports.
- 6.15 p.m.—Services.
- 6.40 p.m.—Horoscope.
- 6.45 p.m.—Services.
- 7.00 p.m.—Jerry Naugler and His Orch.
- 7.30 p.m. to 12.00 mid.—Canadian Radio Commission Programs

### CKIC—Wolfville—1010k.

- 6.00 p.m.—Studio Program.

### CJLS—Yarmouth—228.9

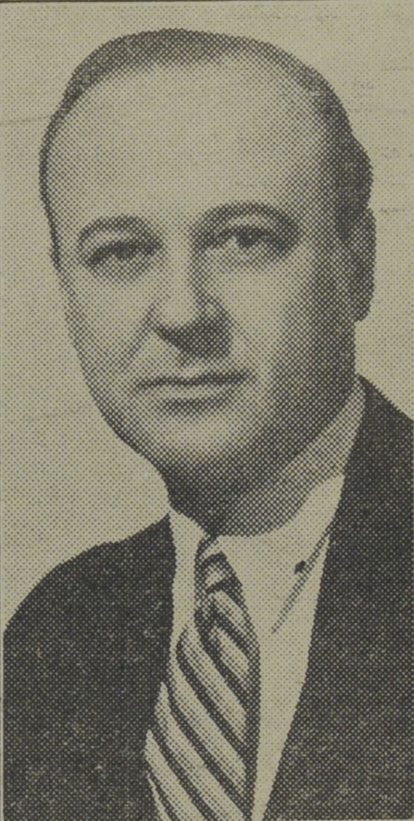
- 10.00 a.m.—Morning Devotional.
- 10.30 a.m.—Organ Studies.
- 11.00 a.m.—CJLS Half-Hour.
- 11.30 a.m.—Blanche Pery and Aileen Crowell.
- 12 noon—Grand Hotel Program.
- 12.30 p.m.—News; Bait Reports.
- 12.45 p.m.—Fisherman's Broadcast.
- 1.00 p.m.—Weather.
- 5.30 p.m.—Uncle Bob and the Kiddies.
- 6.00 p.m.—"Down Melody Lane."
- 6.30 p.m.—Piano Moods (amateurs).
- 7.00 p.m.—Gateway Program.

### CFCY—Charlottetown—630k.

- 11.00 a.m.—Enamel Heating Products.
- 11.15 a.m.—Women at Home Program.
- 12.01 p.m.—Prowse Bros., Ltd.
- 12.15 p.m.—Goodman Company.
- 12.30 p.m.—Official Weather Report.
- 12.31 p.m.—Woods Reade Stock Quotes
- 12.40 p.m.—The "Home Forum."
- 1.00 p.m.—Birks' Time.
- 4.30 p.m.—Brantford Carite Co.
- 4.45 p.m.—Sunglo Fox Foods.
- 5.00 p.m.—Halifax Herald Outports.
- 6.00 p.m.—L. M. Poole Co. Program.
- 6.15 p.m.—"Memory Lane."
- 6.30 p.m.—Official Weather Report.

**E. S. STEPHENSON & CO., LIMITED**  
 Nelson Street, Saint John, N. B.  
 ENGINEERS MANUFACTURERS AGENTS  
 SPECIALIZING IN  
 MECHANICAL and ELECTRICAL EQUIPMENT

## Goes to Opera



GEORGE RASELY.

well known NBC tenor, who has joined the Metropolitan popular season which opened May 11. He made his debut in the English tered "Bride," singing the comedy role of Wenzel. Born in St. Louis, Mo., Rasely began his musical career at fifteen as an oratorio chorister in Worcester, Mass., singing in the famous Worcester Festival Chorus. At twenty he was tenor soloist at Boston's historic Old South Church. Two years later he sang tenor solos with the Handel and Haydn Society in Symphony Hall, Boston. Rasely made his debut as a radio artist with WEAF in 1926 and also appeared over WJZ before those two stations were merged to form the National Broadcasting Company. He has continued to sing over NBC networks ever since the beginning of network broadcasting.

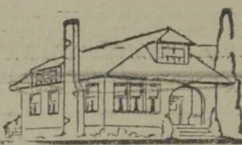
- 6.31 p.m.—Sleepy Town Express.
- 6.45 p.m.—Musical Program.
- 7.00 p.m.—Woods Reade Stock Quotes.
- 7.15 p.m.—Building Products' Program
- 7.30 p.m. to 12.00 mid.—CRC Programs (See details top 1st col.)
- 8.00 p.m.—Moore & McLeod Program.
- 8.15 p.m.—G. J. Hamilton & Sons.

### CHGS—Summerside—1500k.

- 7.30 a.m.—The Eye Opener.
- 8.30 a.m.—Time, Close Down.
- 10.00 a.m.—Morning Melodies.
- 10.30 a.m.—Heart Songs.
- 10.45 a.m.—Home Hour.
- 11.25 a.m.—Rural Program.
- 12.25 p.m.—Time, Weather, etc.
- 12.30 p.m.—Guy Lombardo's Orch.
- 12.45 p.m.—Spanish Music.
- 1.00 p.m.—Midday Music.
- 2.30 p.m.—Time, Close Down.
- 4.00 p.m.—Afternoon Music.
- 4.30 p.m.—Martial Moments.
- 4.45 p.m.—Organ Melodies.
- 5.00 p.m.—Twilight Hour.
- 5.30 p.m.—Variety Program.
- 6.00 p.m.—Musical Merriment.
- 6.25 p.m.—Time, Announcements.



"THE STORE OF QUALITY"  
**L. D. BROWN**  
 270 Main St. Phone 3-2156  
 A Thoroughly Up-To-Date  
**MEAT, GROCERY AND  
 PROVISION MARKET**  
 NEW STORE and  
 NEW EQUIPMENT



## YOUR CEILINGS?

Have You a Living or Dining Room Ceiling in poor condition? If so, let us solve this problem for you with a lovely BEAMED Effect. We know that you will like it.

ESTIMATES FURNISHED WITHOUT OBLIGATION

## MURRAY & GREGORY, Limited

Phone 3-3242 LUMBER—GLASS—MILLWORK Saint John, N. B. BUILDERS' SUPPLIES

- 6.30 p.m.—Canadian Radio Com. Prog.
- 6.45 p.m.—Evening Melodies.
- 11.00 p.m.—Time, National Anthem.

### WJZ—New York—760k.

- NBC BLUE Network—WGY (Schenectady), WEEL (Boston), WTAM (Cleveland). See Log top 2nd col
- 5.15 p.m.—Musical Adventures.
- 5.30 p.m.—Treasure Trails.
- 5.45 p.m.—Ruth and Ross, songs, etc.
- 6.00 p.m.—News Review.
- 6.05 p.m.—Jesse Crawford at the console; Paul Small, solos.
- 6.15 p.m.—Captain Tim's Adventures.
- 6.30 p.m.—Press-Radio News Service.
- 6.35 p.m.—Jamboree, variety program.
- 7.00 p.m.—King's Jesters, quartette.
- 7.15 p.m.—Home Town, drama.
- 7.30 p.m.—"Message of Israel," talk.
- 8.00 p.m.—Henri Dee line, pianist.
- 8.30 p.m.—Boston Symphony Orchestra
- 9.15 p.m.—Armchair Quartette.
- 9.30 p.m.—National Barn Dance.
- 10.30 p.m.—To be announced.
- 11.15 p.m.—Emil Coleman's Orchestra.
- 11.30 p.m.—Glen Gray with His Orch.
- 12.00 mid.—Springtime String O'ch.
- 12.30 a.m.—Henry King and His Orch.

### WEAF—New York—660k.

- NBC RED Network—WBAL (Baltimore), WBZ (Boston), WLW (Cincinnati), WTIC (Hartford), KDKA (Pittsburgh). See Log top 2nd col.
- 5.30 p.m.—Kaltenmeyer's Kindergarten.
- 6.00 p.m.—Otto Thurn's Orchestra.
- 6.30 p.m.—Press-Radio News Service.
- 6.35 p.m.—Baseball Resume.
- 6.45 p.m.—Religion in the News.
- 7.00 p.m.—Connie Gates, contralto, with Jerry Gears' Orch.

- 7.15 p.m.—Edwin C. Hill, with news.
- 7.30 p.m.—Negro Male Chorus.
- 7.45 p.m.—Sport Page of the Air.
- 8.00 p.m.—Carl Ranazza's Orchestra.
- 9.00 p.m.—Frank Fay, comedian, with His Orchestra.

- 9.30 p.m.—The Shell Chateau.
- 10.30 p.m.—Dr. West's Celebrity Night.
- 11.00 p.m.—Clem McCarthy, sport shots
- 11.15 p.m.—Billy Losse and His Orch.
- 11.30 p.m.—Esso News Reporter.
- 11.35 p.m.—Chas. Dornberger's Orch.
- 12.00 mid.—Eddie Duchin and His Orch.
- 12.30 a.m.—Rudy Vallee and His Orch.

### WABC—New York—860k.

- Columbia CBS Chain—WCAU (Philadelphia), WGR (Buffalo), WNAC (Boston). See Log at top 2nd col.
- 4.00 p.m.—Frank Dailey and His Orch.
- 4.30 p.m.—Isle of Dreams.
- 5.00 p.m.—The Captivators.
- 5.15 p.m.—Boadhurst's Sea Stories.
- 5.30 p.m.—Motor City Melodies.
- 6.00 p.m.—Fred. Wm. Wile, politics.
- 6.15 p.m.—News of Youth.
- 6.30 p.m.—Press-Radio News Service.
- 6.35 p.m.—Al Roth and His Orchestra.
- 6.45 p.m.—Song Stylists.
- 7.00 p.m.—Mabelle Jennings, comment
- 7.15 p.m.—Song Stylists, quartette.
- 7.30 p.m.—"The Atlantic Family On Tour," songs and drama.
- 8.00 p.m.—Ziegfeld Follies of the Air.
- 9.00 p.m.—Bruna Castagna, contralto, and Symphony Orch.
- 9.30 p.m.—Salon Mode ne.
- 10.00 p.m.—"Your Hit Parade."
- 11.00 p.m.—Bob Crosby with His Orch.
- 11.30 p.m.—Harry Haisler's Orchestra.
- 12.00 mid.—Abe Lyman and His Orch.
- 12.30 a.m.—Frankie Master's Orch.

A New Feature!  
**LOVE STORY  
 ON THE AIR**  
 Wednesdays at 6:30 p. m.  
**STATION  
 CFNB**  
 Listen In!

## MICKEY MOUSE

A. W. O. L.

By WALT DISNEY

**MICKEY** KEEPS HIS APPOINTMENT, AND FINDS TRIGGER HAWKES DRESSED IN THE UNIFORM OF THE FOREIGN LEGION!

HERE'S YOUR PACKAGE — BUT WHY THE TRICK COSTUME? SHHHHHH!

IT'S A — A — IT'S A DISGUISE! I'M TRAILING A CRIMINAL! BUT YOU RUN ALONG NOW AND DON'T ASK ANY MORE QUESTIONS!

DISGUISE, HUH? I WONDER WHERE HE GOT IT! OVER HERE IT'S DANGEROUS TO WEAR THAT UNIFORM — UNLESS — UNLESS —

GOOD GOSH! THAT'S IT! HE SAID HE WAS GONNA HIDE IN TH' BEST PLACE IN TH' WORLD! AN' HE'S DONE IT! HE'S JOINED TH' FOREIGN LEGION!