

RADIO PROGRAMS

TUESDAY, May 19, 1936

THE TIME GIVEN IN ALL PROGRAMS IS ATLANTIC STANDARD
"The Broadcaster" cannot be responsible for errors or omissions in the following programs or for the last-minute changes by stations or sponsors.

TODAY'S CANADIAN RADIO COMMISSION PROGRAM

- 6.00 p.m.—Closing Stock Quotations, on Montreal Markets.
- 6.15 p.m.—Mid-Week Hymn Sing, mixed quartette and organ.
- 6.30 p.m.—Dinner Music, Montreal.
- 7.00 p.m.—Presenting: Pauline Wright, contralto, Windsor.
- 7.15 p.m.—Rex Battle and His Royal York Orch., dinner music.
- 7.30 p.m.—Musical Tours, with William Nixon, tenor, Ottawa.
- 7.30 p.m.—Canadian Press News.
- 7.45 p.m.—A Novelty Ensemble, from Montreal.
- 8.00 p.m.—Reve de Valse, orchestra under Lucio Agostini.
- 8.30 p.m.—Jazz Nocturne, International Exchange from New York.
- 9.00 p.m.—Mystery House, a dramatic sketch, from Montreal.
- 9.30 p.m.—Serenade To Spring, from Toronto.
- 10.00 p.m.—No Mournful Numbers.
- 10.30 p.m.—Louis Guenette with His Chateau Frontenac Orch.
- 10.45 p.m.—Canadian Press News Bulletin and Weather Forecast.
- 11.00 p.m.—CRBC Time Signal.
- 11.01 p.m.—Luigi Romanelli with His Dance Orchestra, Toronto.
- 11.30 p.m.—"Lullaby Lagoon," slumber music, from Montreal.

CHSJ—Saint John—1120k.

- 6.00 a.m.—Weather Forecast.
- 7.45 a.m.—Recordings.
- 7.50 p.m.—Weather; News; Music.
- 8.15 a.m.—"Thoughts For Today."
- 8.45 a.m.—Musical Program.
- 10.00 a.m.—"The Hour of Good Cheer."
- 11.00 a.m.—Community Doings.
- 11.10 a.m.—Recordings.
- 11.30 a.m.—Prof. Mem-O-Rea.
- 11.45 a.m.—Crazy Water Crystallizers.
- 12 noon.—Musical Program.
- 12.15 p.m.—Wassons' Musical Program.
- 12.30 p.m.—Ideal Stores' Program.
- 12.45 p.m.—Driscolls' Program.
- 1.00 p.m.—Musical Program.
- 1.30 p.m.—Rex Battle's Orch., Toronto.
- 2.00 p.m.—Fashion Parade by Christine
- 2.15 p.m.—Music.
- 4.00 p.m.—"On the Air."
- 5.00 p.m.—News Bulletin.
- 5.05 p.m.—Recordings.
- 5.15 p.m.—Melodic Melodies.
- 5.30 p.m.—Musical Program.
- 6.00 p.m.—"Lucky," Emerson Bros.
- 6.10 p.m.—Capitol Theatre News.
- 6.15 p.m.—Musical Program.
- 6.30 p.m.—Prof. Mem-O-Rea.
- 6.45 p.m.—Stock Market Reports, CRC.
- 7.00 p.m.—"True Confessions," Cystex.
- 7.15 p.m.—Robin Hood Mills Ltd.
- 7.30 p.m.—to 12.00 mid.—Canadian Radio Commission Programs
See details top of 1st col.
- 8.15 p.m.—Pacific Dairies Ltd. Prog.

CFNB—Fredericton—550k.

- 8.00 a.m.—Musical Clock.
- 8.30 a.m.—M. M. A. Talk.
- 8.35 a.m.—"The Listening Post."
- 9.00 a.m.—Birthdar Program.
- 9.30 a.m.—Madame Zari.
- 9.45 a.m.—Morning Concert.
- 10.15 a.m.—Thor Program.
- 10.45 a.m.—Enterprise Foundry Prog.
- 11.00 a.m.—Happy Warrior Hour.
- 12 noon.—Purina Program.
- 12.15 p.m.—Building Products' Prog.
- 12.30 p.m.—Canada Starch Melodies.
- 12.45 p.m.—Sherwin-Williams' Musicales.
- 1.00 p.m.—Frigidaire Program.
- 1.30 p.m.—Rex Battle's Cincret Orch.
- 2.00 p.m.—Marconi Radio Hour.
- 4.30 p.m.—Tea Dance.
- 4.45 p.m.—Concert Hall of the Air.
- 5.00 p.m.—Monitor News Bulletins.
- 5.30 p.m.—Scrap Book.
- 6.00 p.m.—Fireside Hour.
- 6.15 p.m.—Canada Cement Program.
- 6.30 p.m.—C.C.M. Program.
- 6.45 p.m.—MacDonald Program.
- 7.00 p.m.—Valley Motors' Program.

LOG OF STATIONS

MARITIME PROVINCES—

- CHSJ—SAINT JOHN—1120k.
- CFNB—FREDERICTON—550k.
- CKGW—MONCTON—1370k.
- CHNS—HALIFAX—930k.
- CJCB—SYDNEY—1240k.
- CFCY—CHARLOT'TOWN—630k.
- CHCK—CHARLOT'TOWN—1310k.
- CHGS—SUMMERSIDE—1450k.

UPPER CANADIAN—

- CFCF—MONTREAL—600k.
- CKAC—MONTREAL—730k.
- CRCM—MONTREAL—910k.
- CHNC—NEW CARLISLE—1210k.
- CFRB—TORONTO—690k.
- CRCT—TORONTO—840k.
- CKLW—WINDSOR—1030k.

UNITED STATES—

- WPG—ATLANTIC CITY—1100k.
- WBAL—BALTIMORE—1060k.
- WLBZ—BANGOR—620k.
- WEZ—BOSTON—990k.
- WEEI—BOSTON—590k.
- WNAC—BOSTON—1230k.
- WGR—BUFFALO—550k.
- WLW—CINCINNATI—700k.
- WTAM—CLEVELAND—1070k.
- WJR—DETROIT—750k.
- WTIC—HARTFORD—1060k.
- WOR—NEWARK—710k.
- WLWL—NEW YORK—1100k.
- WCAU—PHILADELPHIA—1170k.
- KDKA—PITTSBURGH—980k.
- WCSH—PORTLAND—940k.
- WGY—SCHENECTADY—840k.

7.10 p.m.—News Bulletins.

- 7.15 p.m.—Souvenirs in Rhythm.
- 7.17 p.m.—"Pop Donovan," sports.
- 7.30 p.m.—to 12.00 mid.—Canadian Radio Commission Programs
See details top of 1st col.

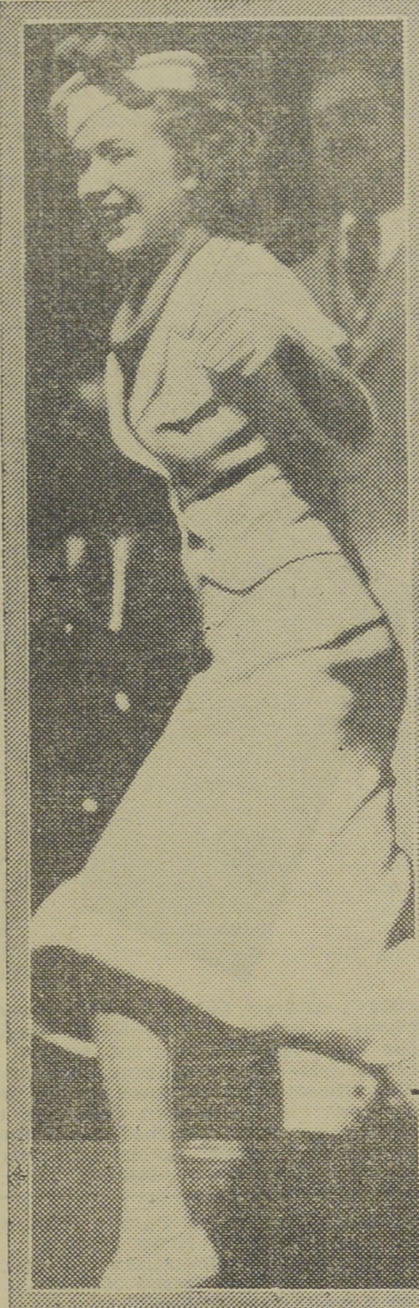
CKCW—Moncton—1370k.

- 8.00 a.m.—Rise and Shine.
- 8.15 a.m.—Times' Newscast.
- 8.30 a.m.—Devotional Period.
- 8.45 a.m.—Anniversary Hour.
- 9.00 a.m.—Sweet Music.
- 9.15 a.m.—to 9.30—Home Forum.
- 12 noon.—Luncheon Dance.
- 12.15 p.m.—Transcript Newscast.
- 12.29 p.m.—Live Stock Reports.
- 12.30 p.m.—Betty Bee Hive.
- 12.45 p.m.—To Milady.
- 1.00 p.m.—Don Sesta.
- 1.00 p.m.—The Variety Show.
- 1.30 p.m.—to 2.00—International Hour.
- 5.00 p.m.—Your Hit Parade.
- 6.00 p.m.—Hawaiian Shadows.
- 6.15 p.m.—Excerpts from the Operas.
- 6.25 p.m.—Imperial News Flashes.
- 6.30 p.m.—Atlantic Antics.
- 6.45 p.m.—Travelogue.
- 7.30 p.m.—to 12.00 mid.—Canadian Radio Commission Programs
See details top of 1st col.

CHNS—Halifax—930k.

- 10.00 a.m.—Morning Devotions.
- 10.15 a.m.—Musical Program.
- 10.30 a.m.—Morning Melodies.
- 10.45 a.m.—News Review.
- 11.00 a.m.—Mrs. Dexter's Radio Hour.
- 12 noon.—Synopsated Spots.
- 12.15 p.m.—Cousins' Spring Parade.
- 12.30 p.m.—Canada Starch Melodies.
- 12.45 p.m.—News Bulletin.
- 1.00 p.m.—Time; Market Reports, etc.
- 1.15 p.m.—Oxydol's Own Ma Perkins.
- 5.30 p.m.—Uncle Mel.
- 6.00 p.m.—Time; Music; Services.
- 6.30 p.m.—News.
- 6.40 p.m.—Horoscope; Services.
- 6.45 p.m.—Salada Tea Organ Reveries.

Priscilla's Truckin'!



PRISCILLA LANE.

petite, versatile Waring comedienne, does a bit of truckin' for the benefit of the audience during a recent broadcast at a CBS Radio Playhouse. Priscilla and her sister, Rosemary, are regular features of the weekly Waring broadcast, heard over the nationwide WABC-Columbia network each Tuesday, from 9.30 to 10.00 p.m.—A.S.T.

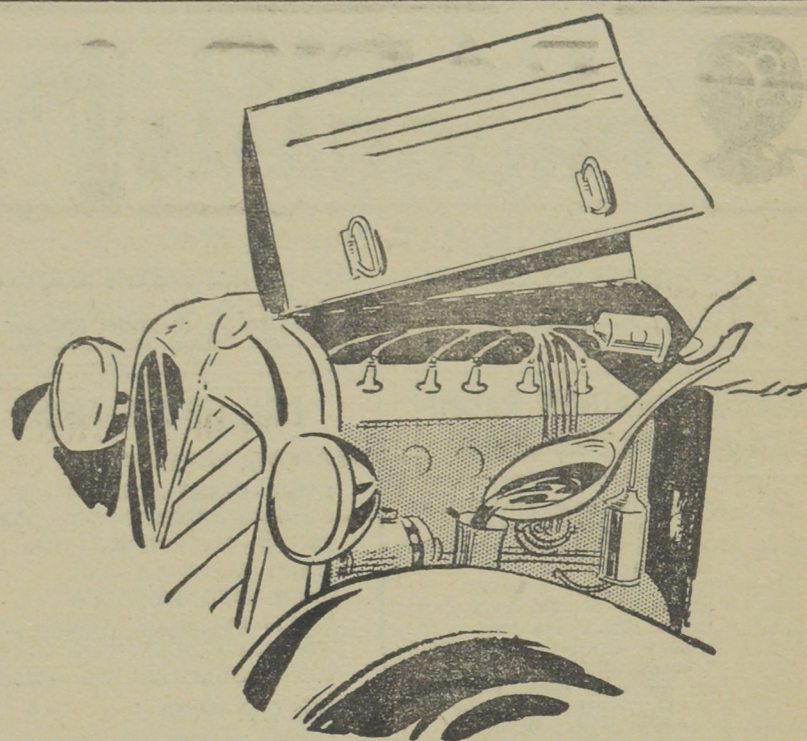
7.30 p.m.—to 12.00 mid.—Canadian Radio Commission Programs
See details top 1st col.

CFCY—Charlottetown—630k.

- 11.00 a.m.—Enamel Heating Products.
- 11.15 a.m.—Women at Home Program.
- 12 noon.—Prowse Bros., Ltd. Prog.
- 12.15 p.m.—Goodman Company.
- 12.30 p.m.—Official Weather Report.
- 12.31 p.m.—Woods Reade Stock Quotes
- 12.40 p.m.—The "Home Forum."
- 1.00 p.m.—Birch's Time.
- 4.30 p.m.—Brantford Carrite Co.
- 4.45 p.m.—Sunglo Fox Foods.
- 5.00 p.m.—Halifax Herald Outports.
- 6.00 p.m.—L. M. Poole Co. Program.
- 6.15 p.m.—"Memory Lane."
- 6.30 p.m.—Official Weather Reprt.
- 6.31 p.m.—Sleepy Town Express.
- 6.45 p.m.—Musical Program.
- 7.01 p.m.—Woods Reade Stock Quotes
- 7.15 p.m.—Building Products' Program
- 7.30 p.m.—to 12.00 mid.—CRC Programs
dio Commission Programs
See details top of 1st Col.
- 8.00 p.m.—Moore & McLeod, Ltd.
- 8.15 p.m.—G. J. Hamilton & Sons.

CHGS—Summerside—1500k.

- 7.30 a.m.—The Eye Opener.
- 8.30 a.m.—Time, Close Down.
- 10.00 a.m.—Morning Melodies.
- 10.30 a.m.—Heart Songs.
- 10.35 a.m.—Home Hour.
- 11.25 a.m.—Rural Program.
- 12.10 p.m.—Bee Hive Program.
- 12.25 p.m.—Time, Weather, etc.
- 12.30 p.m.—Robert Naylor, tenor.
- 12.45 p.m.—Jay Wilbur and His Band.
- 1.00 p.m.—Midday Music.
- 2.00 p.m.—Time; Close Down.
- 4.00 p.m.—Afternoon Music.
- 4.30 p.m.—Martial Moments.
- 4.45 p.m.—Popular Songs.
- 5.00 p.m.—Twilight Hour.
- 5.30 p.m.—Variety Program.
- 6.00 p.m.—Musical Merriment.
- 6.10 p.m.—Beatty Washer Program.
- 6.25 p.m.—Time, Announcements.
- 6.30 p.m.—Exlde Battery Program.
- 6.45 p.m.—Evening Melodies.



Give Your Car A SPRING Tonic

Let us remove the last effect of Winter from your car. Your crank case in particular needs attention. We'll remove that sludge, flush it, and refill it; oil your transmission—in fact, service all the working parts. Bring in your car today. We'll fix it up for summer driving.

AVENUE SERVICE STATION

DOUGLAS AVENUE

- 7.00 p.m.—Canadian Radio Com. Prog. See details top 1st col.
- 11.00 p.m.—Time, National Anthem.

CJLS—Yarmouth—228.9

- 10.00 a.m.—Morning Devotional.
- 10.20 a.m.—Organ Studies.
- 11.00 a.m.—CJLS Half-Hour.
- 11.30 a.m.—Sustaining Program.
- 12 noon.—Grand Hotel Program.
- 12.30 p.m.—News; Bait Reports.
- 1.00 p.m.—Weather.
- 5.30 p.m.—Uncle Bob and the Kiddies.
- 6.00 p.m.—"Down Melody Lane."
- 6.15 p.m.—Twilight Hill-Billies.
- 6.30 p.m.—Max Hamilton.
- 7.00 p.m.—Gateway Program.

CKIC—Wolfville—1010k.

- 12 noon.—Studio Program.
- 6.00 p.m.—Studio Program.

WJZ—New York—760k.

- NBC BLUE Network—WGY (Schenectady), WEEI (Boston), WTAM (Cleveland). See Log top 2nd col.
- 4.45 p.m.—The Magic Voice.
- 5.00 p.m.—Meetin' House.
- 5.30 p.m.—The Singing Lady, nursery songs and stories.
- 5.45 p.m.—Little Orphan Annie, drama
- 6.00 p.m.—The Ezzo News Reporter.
- 6.05 p.m.—Minute Men.
- 6.15 p.m.—Animal Close-ups, stories.
- 6.30 p.m.—Press-Radio News Service.
- 6.35 p.m.—Frank and Flo, songs, etc.
- 6.45 p.m.—Lowell Thomas, news.
- 8.00 p.m.—"Easy Aces," sketch.
- 7.15 p.m.—Tony Russell, songs.
- 7.30 p.m.—Lum and Abner, comedy.
- 7.45 p.m.—To be announced.
- 8.00 p.m.—Eno Crime Clues, drama.
- 8.30 p.m.—Welcome Valley.
- 9.00 p.m.—Ben Bernie and His' Orch.
- 9.30 p.m.—String Symphony.
- 10.30 p.m.—Elza Shalbert Reviews.
- 10.45 p.m.—Barry McKinley, baritone.
- 11.00 p.m.—The Ezzo News Reporter.
- 11.05 p.m.—Phil Levant and His Orch.
- 11.30 p.m.—Ruby Newman's Orchestra.
- 12.00 mid.—Shandor, the violinist.
- 12.08 a.m.—Jimmy Dorsey's Orchestra.
- 12.30 a.m.—Jessie Hawkins' Orchestra.

WEAF—New York—660k.

- NBC RED Network—WBAL (Baltimore), WBZ (Boston), WLW (Cincinnati), WTIC (Hartford), KDKA (Pittsburgh). See Log top 2nd col.
- 5.30 p.m.—Manhattan Guardsmen.
- 6.00 p.m.—Flying Time, aviation.
- 6.15 p.m.—Mid-Week Hymn Sing.
- 6.30 p.m.—Press-Radio News Service.
- 6.35 p.m.—Baseball Resume.
- 6.45 p.m.—Billy and Betty.

- 7.00 p.m.—Amos 'n' Andy, comedy.
- 7.15 p.m.—Human Side of the News.
- 7.30 p.m.—Welfare Committee Talk.
- 7.45 p.m.—You and Your Government.
- 8.00 p.m.—Leo Reisman with His Orch. and Phil Dewey.
- 8.30 p.m.—Lady Esther Program.
- 9.00 p.m.—The Voice of the People.
- 9.30 p.m.—Ed Wynn as Gulliver the Traveller.
- 10.00 p.m.—Elgin Swing Time Revue.
- 10.30 p.m.—Royal Campbell's Royalists.
- 10.45 p.m.—Twin City Foursome.
- 11.00 p.m.—Clem McCarthy, sports shots
- 11.15 p.m.—Nano Rodrigo's Orchestra.
- 11.30 p.m.—Ezzo News Reporter.
- 11.35 p.m.—Earl Hines with His Orch.
- 11.45 p.m.—Jesse Crawford, organist.
- 12.00 mid.—Henry Busse and His Orch.
- 12.30 a.m.—Sophie Tucker's Orchestra.

WABC—New York—860k.

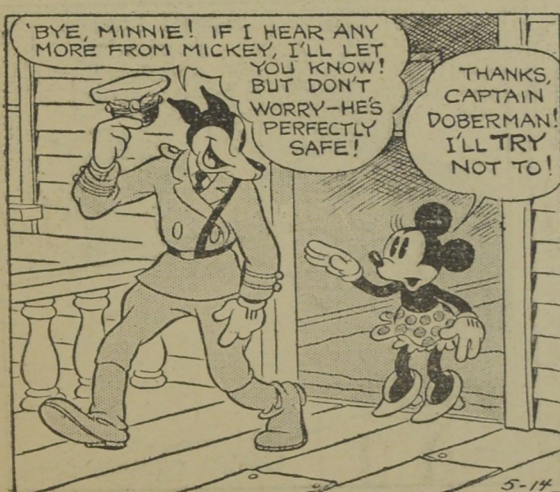
- Columbia CBS Chain—WCAU (Philadelphia), WGR (Buffalo), WNAC (Boston). See Log at top 2nd col.
- 5.00 p.m.—Jimmy Farrell, baritone.
- 5.15 p.m.—Billy Mills and His Orch.
- 5.45 p.m.—"Wilderness Road," drama.
- 6.00 p.m.—Benay Venuta, songs.
- 6.15 p.m.—News of Youth.
- 6.30 p.m.—Press-Radio News Service.
- 6.35 p.m.—Alexander Cores, violinist.
- 6.45 p.m.—"Renfrew of the Mounties,"
- 7.00 p.m.—Maybelle Jennings, commentator.
- 7.15 p.m.—Krueger Musical Toast.
- 7.30 p.m.—Kate Smith and Her Guest Stars, with Orchestra.
- 7.45 p.m.—Boake Carter, minstrel man.
- 8.00 p.m.—Laugh with Ken Murray.
- 8.30 p.m.—Camel Caravan, with Glen Gray and His Orchestra.
- 9.30 p.m.—Fred Waring's Pennsylvanians and Their Music.
- 10.00 p.m.—Parties at Pickfair, with Mary Pickford.
- 10.30 p.m.—"The March of Time."
- 10.45 p.m.—Willard Robison's Orchestra.
- 11.30 p.m.—LeRoy Smith's Orchestra.
- 12.00 mid.—Frank Dalley and His Orch.
- 12.30 a.m.—Xavier Cugat's Orchestra.

SHORT-WAVE STATIONS

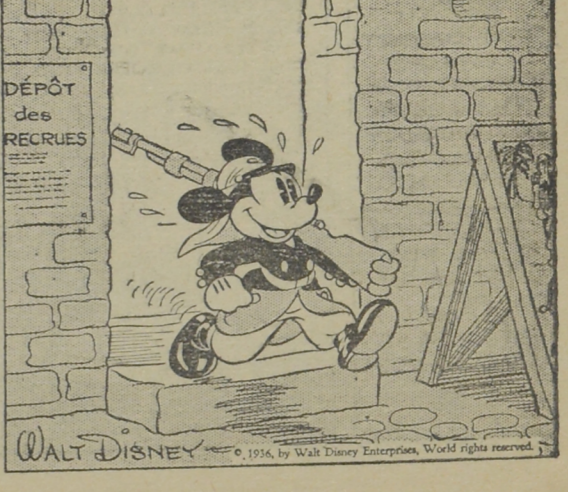
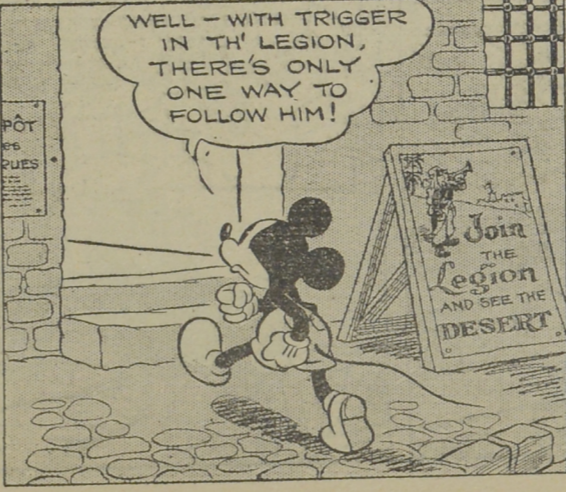
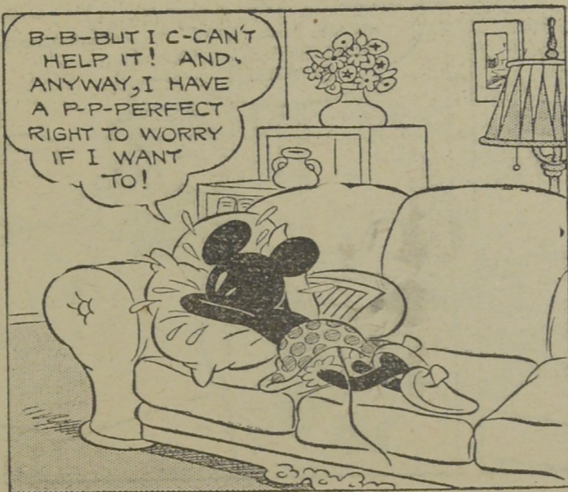
- British Empire, DAVENTRY—GSA, 49.6 meters—GSB, 31.6—GSC, 31.3—GSD, 25.5—GSE, 25.3—GSF, 19.8—GSG, 16.9—GSH, 13.9—GSI, 19.6—GSJ, 13.9—GSL, 49.1.
- BERLIN, Germany—DJD, 25.5m.—DJC, 49.8.
- ROME, Italy—2RO, 31.1 m.
- MADRID, Spain—EAQ, 30.4 m.

CARLSON'S AUTO PARTS
300 Union Street Saint John, N. B. Phone 3-6188
NEW PARTS and ACCESSORIES for All Makes of Cars and Trucks
—Our Prices Are the Lowest in the Maritimes—
WRITE US FOR CATALOGUE

MICKEY MOUSE



A CALL TO ARMS



By WALT DISNEY