



Stop That Cough.

Englishmen's Cough Mixture
It is the most certain and Speedy Remedy for all Disorders of the Chest and Lungs...

FELLOWS' Dyspepsia Bitters

Indigestion, Jaundice, Bilious Complaint, Bad Breath, Sick Headache, Heartburn, Acid Stomach, etc.

Fellows' Leeming's Essence

Cures Splints, Sprains, Rheumatism, Strains of the Tendons and Back Sticks, Cramps of the Shoulders, Stiff, Hoarse, Knee, Warblers, Fatigue, Posture, And Enlargement of any of the Joints.

NEW BRUNSWICK RAILWAY COMPANY.

Summer Time Table.

BEGINNING MONDAY, June 19th, TRAINS will run as follows:
1.13 A. M. Passenger Train leaves WOODSTOCK for Gibson.

House for Sale.

THAT beautifully situated House and property belonging to the Estate of the late Wm. A. McLean, is now offered for sale.

Splendid Farm FOR SALE.

THE Subscriber offers for sale on private terms that well-known farm in Marguerite Valley, N. B., formerly owned by the late Geo. B. Covert, Esq., containing 60 acres...

VALUABLE LAND, FOR SALE.

THE subscribers are authorized to sell several Farms near Fredericton. Prices moderate and terms easy.

GRAND HOTEL GRAND FALLS.

TO Lease for a term of years or for Sale, that beautiful Hotel and premises situated at Grand Falls, on Front Street, at present occupied by Leonard Brien.

EXECUTORS' NOTICE.

ALL persons having legal claims against the Estate of the late WILLIAM GRIEVES, are requested to send their claims to the undersigned...

Auctioneer Notice.

THE Subscriber having taken the Store on Queen Street, next below Thomas Stanger's, Collector, is now carrying on the business of Auctioneer and Commission Merchant...

DIPHTHERIA!

JOHNSON'S ANODYNE LINIMENT will positively prevent this terrible disease, and will positively cure nine cases out of ten...

TENDERS.

TENDERS addressed to the undersigned, and endorsed "Tender for Quaco Lightship," will be received at my office...

WELLAND CANAL.

NOTICE TO CONTRACTORS.

SEALED TENDERS addressed to the undersigned, and endorsed "Tender for the Welland Canal," will be received at my office...

TRENT NAVIGATION.

Fenelon Falls, Buckhorn Rapids and Burleigh Canals.

NOTICE TO CONTRACTORS.

SEALED TENDERS, addressed to the undersigned, and endorsed "Tender for Trent Navigation," will be received at my office...

VALUABLE PROPERTY FOR SALE.

THAT valuable property in Kingsclear known as "Woodlands," fronting on the River St. John, and situated in the Parish of St. John of the City of Fredericton (proper).

CHARLES C. TADOR, Woodlands.

FARM REGISTER.

THE BOARD OF AGRICULTURE, in carrying out the provisions of the "Farm Register Act," has the honor to announce that the registration of farms is now open...

PROPERTY FOR SALE.

THOSE THREE DWELLINGS, with outbuildings attached, known as the "Riverview Property," and situated on King and Westminster Streets, Fredericton, N. B., are now offered for sale...

IN THE YORK COUNTY COURT.

In the matter of John Smith, an absconding and absent debtor.

NOTICE.

NOTICE is hereby given, that a general meeting of the Creditors of the said John Smith, will be held on THURSDAY, the 30th day of August next, at the hour of ten o'clock in the forenoon...

SEED.

After a trial of many years a practical gardener says he finds the following method of raising peas in small gardens the most profitable and satisfactory.

SEED.

Potato growing has been the object of a curious experiment just completed in England. A pound of early potatoes was taken and allowed to sprout (sprout) freely.

SEED.

After a trial of many years a practical gardener says he finds the following method of raising peas in small gardens the most profitable and satisfactory.

SEED.

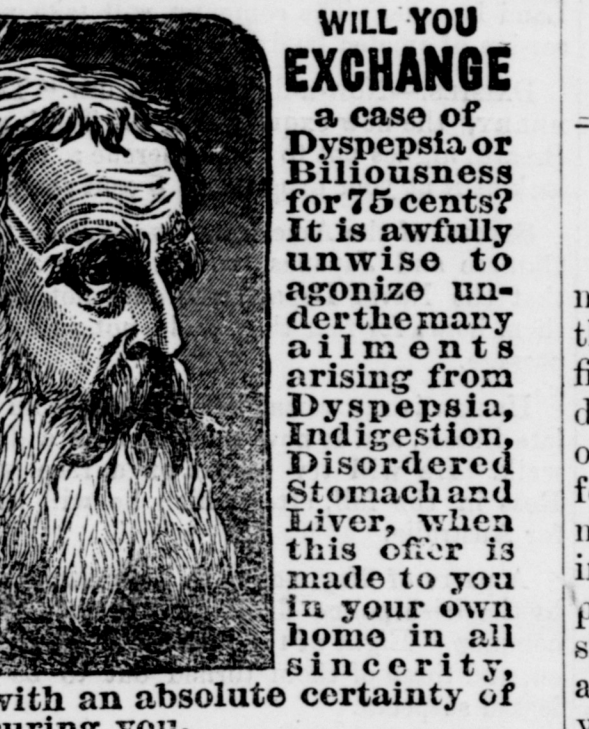
Potato growing has been the object of a curious experiment just completed in England. A pound of early potatoes was taken and allowed to sprout (sprout) freely.

SEED.

After a trial of many years a practical gardener says he finds the following method of raising peas in small gardens the most profitable and satisfactory.

SEED.

Potato growing has been the object of a curious experiment just completed in England. A pound of early potatoes was taken and allowed to sprout (sprout) freely.



WILL YOU EXCHANGE a case of Dyspepsia or Biliousness for 75 cents? It is awfully unwise to agonize under the many ailments arising from Dyspepsia, Indigestion, Disordered Stomach and Liver...



1882--SEEDS--1882

WILEY'S Field Seeds.

- 200 lbs. Beet Seed, 250 " Carrot Seed, 300 " Mangel Seed, 1500 " Turnip Seed, 5000 " Northern Red Clover, 1000 " Alsike Clover, 250 bus. Timothy, Kentucky Blue Grass, Orchard Grass, Red Top Grass.

Garden Seeds.

- Beans, Beets, Cabbage, Carrots, Corn, Celery, Cress, Cucumber, Water-melon, Musk Melon, Lettuce, Fine Danver's Onion, (American Seed), Parsnips, Peas, Radish, Squash, Tomato, Herbs, etc., etc., etc., Amber Sugar Cane, Sugar Beet

Flower Seeds.

All the new and choice varieties. Cladlus Bulbs! VICK'S FLOWER SEEDS.

JOHN M. WILEY, Opp. Normal School, Queen St., Fredericton.

SHORT HORN DURHAM BULLS FOR SALE.

THE Subscriber offers for sale six young Short Horn Durham Bulls, Registered Short Horns from 1 year and upwards. They are very desirable animals for breeders or Agricultural Societies.

SEED.

After a trial of many years a practical gardener says he finds the following method of raising peas in small gardens the most profitable and satisfactory.

SEED.

Potato growing has been the object of a curious experiment just completed in England. A pound of early potatoes was taken and allowed to sprout (sprout) freely.

SEED.

After a trial of many years a practical gardener says he finds the following method of raising peas in small gardens the most profitable and satisfactory.

Agriculture.

Management of Manure.

Few farmers adopt any systematic method of managing their manure, though it is a matter of the very first importance. Among those who do there is a difference in their mode of going about it.

Practical Directions for Draining.

We have had several articles on the subject of draining, and now add some practical directions for the laying out of drains after perusing which the farmer will have the necessary information for proceeding with the work of draining his own farm.

Draining.

In the report of May, issued by the United States Department of Agriculture, we find a return on Draining from which we take the following:- The testimony of the increased production and profit of underdraining is emphatic and general.

Liquid Manure Sprinkler.

A correspondent of the New England Farmer gives his ideas as to what makes a proper liquid manure sprinkler, as follows:- The question of how to save and apply liquid manure without the labor and expense of twice carting farm-ers, which has prevented many farmers from saving it, I have solved, to my own satisfaction, at least. I had been looking unsuccessfully for the last year for a street sprinkler that was out of me, which I might buy cheaply for the purpose of spreading liquid manure upon the field, and therefore concluded to make one by using a molasses hogshead for a tank, which is a perfect success and within the reach of the poorest farmer, and is not patented.

SHEEP.

The crying need of American Agriculture today is a more general incorporation of the sheep into the farming economy. More prolific than horses or cattle, as well as more tractable, subsisting on scantier herbage and requiring less supervision, it claims the additional advantage of being a source of marketable fleeces, pending its growth to maturity. It is more readily transferred from one inclosure to another, and is easily restrained by fences which would prove no barrier against the encroachment of other farm stock.

Flouriculture.

It is a mistaken idea that flowers should be watered twice a day and only, at sunrise and after sunset. Flower should always be watered when the soil about their roots dries. Some plants require to be watered twice a day, some three or four times some once, and others four or five times a week. Care should be taken to water the soil about the roots, and not to sprinkle the top as many do, thinking that if the leaves and flowers get a dainty bath from the spout of a watering-pot, all is well. The root of the plant is the nourishment, and not the blossoms and leaves. Although, of course, they present a far lovelier appearance when sprinkled over with diamond drops of water. Another point for amateur florists to observe is the careful pruning of all plants, removing half withered blossoms and many more buds not collected in a box, and will make excellent manure. Dead flowers and leaves on a plant spoils its beauty, as soiled lace at the neck and sleeves spoils the beauty of a dress. Roses grow well in any ordinary garden soil that is free from standing water and well drained. The soil should not contain too much clay, but if this is apparent it may be remedied by an application of wood and coal ashes, lime, and stable manure. The rose bushes should be pruned in October, and not in the spring of the year as many suppose.

Flouriculture.

The secret of raising winter squash is to plant them late. When maggots get into the vines, the only way to save the crop is to cover the vines about six inches deep with earth. Burying the worm kills it, and does not hurt the vines. The crescent strawberry is the best variety for all purposes. The way to get rich in farming is to keep down weeds and use plenty of manure.

Flouriculture.

Farm manures contain all, while commercial fertilizers may contain only a portion of the ingredients which plants use for food. But if a farmer were to find it profitable to apply large quantities of phosphates to his fields, as is often the case, he would probably secure that material more cheaply by purchasing a superphosphate, or bone meal, than by getting horse manure from city stables at large expense.

Improved Method of Summer Mulching.

Our chief obstacle in summer is drought. How to prevent it is unknown, but to cultivate in such manner as to mitigate its disadvantages is what all can do. The best of all remedies in dry spells is mulching. Those who practise it do so for the purpose of protection in winter; but a mulch is really of more advantage in the warmest days of summer than when the temperature is at zero. Contrary to expectation, those who live in sandy locations can bear testimony to the fact that the apparently dry, sandy soils retain more moisture than those of a heavier nature, but are almost burning hot at the surface during midday in times of drought. This great heat of the surface is too severe for tender and young plants. While warm at the surface the moisture by capillary attraction is usually sufficient for growth, but much loss occurs from evaporation. A retention of moisture enables plants to pass through the dry spells and increases yield. As a proof of this we know that in places where a loess board has fallen and covered the ground earthworms get at work, humus forms, the color is darker and the place evidently richer. This is owing to the shade and darkness afforded by the covering. The soil's moisture is retained, the ground is better covered, and the plants are better protected from evaporation. Clearing of the ground in better condition than being sowed, and adds much valuable nitrogenous matter to the soil by the decay of its roots when turned under; but we are satisfied that much of the benefit gained by the soil is derived from the shading afforded by the thin growing clover. The denser the shade the richer the soil becomes, and plants with broad leaves are better for the purpose than straight-stalked ones, which we know by comparing the benefits derived from crops of buckwheat and rye. The buckwheat shades the ground completely, but the rye is better for turning under when young. Mulching can be done with leaves, straw, grass that has been hoed up, and even newspapers. The latter are available, and can be made serviceable, by painting them with some substance that is insoluble in water. A good home-made article for such purpose is to dissolve glue in a vessel of water to the consistency of thin syrup. In another vessel dissolve, in the same quantity of water, as much bichromate of potash as it will take. Then pour the two liquids together. The mixture remains fluid in the dark. A good home-made article for such purpose is to dissolve glue in a vessel of water to the consistency of thin syrup. In another vessel dissolve, in the same quantity of water, as much bichromate of potash as it will take. Then pour the two liquids together. The mixture remains fluid in the dark.

Manuring Fruit Trees.

One would hardly suppose that it was necessary to say to people that they should manure their fruit trees. Over and over again we have urged this in our columns. But universal experience is that fruit trees are neglected, and experience equally universal shows that it is only by calling repeated attention to these matters that people will do better. Fall is a particularly good season for attention to this. The heaviest of farm work is over, and nothing particularly pressing, and just this kind of thing can be done with advantage all round. While orchard-trees are young, and crops cultivated between them, they do tolerably well. Garden or farm-crops cannot be grown without manure. Everybody knows this. They are manured as the trees steal some of it. But the time comes when the trees meet their branches, and crops cannot be grown to advantage any more, and then all manure for the fruit trees stops forever. They generally get yellow, the fruit poor and knotty, and much falls off in a dry time. Just here comes in another idea. Everybody wants or ought to want good roads. One of the best ways is to keep the ditches open and clean. This lets off the water easily; it is water on roads that spoils them. Then this ditch stuff is capital food for trees. If it will pay to keep the road dry, it will doubly pay when drying the road to spread the stuff under the fruit trees. Many fruit trees require good, rich manure, and when one talks of manuring fruit trees, he has an idea of the valuable matter, at so many dollars a ton must be procured. Nothing of the kind. A ride around our good old Germantown will show many an old pear, apple or cherry tree, so situated that simply every year washes down around the stem over the roots, and it is wonderful how they grow and bear. Some of these old pear trees are Sockels and the spaces a ton must be procured. Nothing of the kind. A ride around our good old Germantown will show many an old pear, apple or cherry tree, so situated that simply every year washes down around the stem over the roots, and it is wonderful how they grow and bear. Some of these old pear trees are Sockels and the spaces a ton must be procured. Nothing of the kind. A ride around our good old Germantown will show many an old pear, apple or cherry tree, so situated that simply every year washes down around the stem over the roots, and it is wonderful how they grow and bear. Some of these old pear trees are Sockels and the spaces a ton must be procured. Nothing of the kind. A ride around our good old Germantown will show many an old pear, apple or cherry tree, so situated that simply every year washes down around the stem over the roots, and it is wonderful how they grow and bear. Some of these old pear trees are Sockels and the spaces a ton must be procured. Nothing of the kind. A ride around our good old Germantown will show many an old pear, apple or cherry tree, so situated that simply every year washes down around the stem over the roots, and it is wonderful how they grow and bear. Some of these old pear trees are Sockels and the spaces a ton must be procured. Nothing of the kind. A ride around our good old Germantown will show many an old pear, apple or cherry tree, so situated that simply every year washes down around the stem over the roots, and it is wonderful how they grow and bear. Some of these old pear trees are Sockels and the spaces a ton must be procured. Nothing of the kind. A ride around our good old Germantown will show many an old pear, apple or cherry tree, so situated that simply every year washes down around the stem over the roots, and it is wonderful how they grow and bear. Some of these old pear trees are Sockels and the spaces a ton must be procured. Nothing of the kind. A ride around our good old Germantown will show many an old pear, apple or cherry tree, so situated that simply every year washes down around the stem over the roots, and it is wonderful how they grow and bear. Some of these old pear trees are Sockels and the spaces a ton must be procured. Nothing of the kind. A ride around our good old Germantown will show many an old pear, apple or cherry tree, so situated that simply every year washes down around the stem over the roots, and it is wonderful how they grow and bear. Some of these old pear trees are Sockels and the spaces a ton must be procured. Nothing of the kind. A ride around our good old Germantown will show many an old pear, apple or cherry tree, so situated that simply every year washes down around the stem over the roots, and it is wonderful how they grow and bear. Some of these old pear trees are Sockels and the spaces a ton must be procured. Nothing of the kind. A ride around our good old Germantown will show many an old pear, apple or cherry tree, so situated that simply every year washes down around the stem over the roots, and it is wonderful how they grow and bear. Some of these old pear trees are Sockels and the spaces a ton must be procured. Nothing of the kind. A ride around our good old Germantown will show many an old pear, apple or cherry tree, so situated that simply every year washes down around the stem over the roots, and it is wonderful how they grow and bear. Some of these old pear trees are Sockels and the spaces a ton must be procured. Nothing of the kind. A ride around our good old Germantown will show many an old pear, apple or cherry tree, so situated that simply every year washes down around the stem over the roots, and it is wonderful how they grow and bear. Some of these old pear trees are Sockels and the spaces a ton must be procured. Nothing of the kind. A ride around our good old Germantown will show many an old pear, apple or cherry tree, so situated that simply every year washes down around the stem over the roots, and it is wonderful how they grow and bear. Some of these old pear trees are Sockels and the spaces a ton must be procured. Nothing of the kind. A ride around our good old Germantown will show many an old pear, apple or cherry tree, so situated that simply every year washes down around the stem over the roots, and it is wonderful how they grow and bear. Some of these old pear trees are Sockels and the spaces a ton must be procured. Nothing of the kind. A ride around our good old Germantown will show many an old pear, apple or cherry tree, so situated that simply every year washes down around the stem over the roots, and it is wonderful how they grow and bear. Some of these old pear trees are Sockels and the spaces a ton must be procured. Nothing of the kind. A ride around our good old Germantown will show many an old pear, apple or cherry tree, so situated that simply every year washes down around the stem over the roots, and it is wonderful how they grow and bear. Some of these old pear trees are Sockels and the spaces a ton must be procured. Nothing of the kind. A ride around our good old Germantown will show many an old pear, apple or cherry tree, so situated that simply every year washes down around the stem over the roots, and it is wonderful how they grow and bear. Some of these old pear trees are Sockels and the spaces a ton must be procured. Nothing of the kind. A ride around our good old Germantown will show many an old pear, apple or cherry tree, so situated that simply every year washes down around the stem over the roots, and it is wonderful how they grow and bear. Some of these old pear trees are Sockels and the spaces a ton must be procured. Nothing of the kind. A ride around our good old Germantown will show many an old pear, apple or cherry tree, so situated that simply every year washes down around the stem over the roots, and it is wonderful how they grow and bear. Some of these old pear trees are Sockels and the spaces a ton must be procured. Nothing of the kind. A ride around our good old Germantown will show many an old pear, apple or cherry tree, so situated that simply every year washes down around the stem over the roots, and it is wonderful how they grow and bear. Some of these old pear trees are Sockels and the spaces a ton must be procured. Nothing of the kind. A ride around our good old Germantown will show many an old pear, apple or cherry tree, so situated that simply every year washes down around the stem over the roots, and it is wonderful how they grow and bear. Some of these old pear trees are Sockels and the spaces a ton must be procured. Nothing of the kind. A ride around our good old Germantown will show many an old pear, apple or cherry tree, so situated that simply every year washes down around the stem over the roots, and it is wonderful how they grow and bear. Some of these old pear trees are Sockels and the spaces a ton must be procured. Nothing of the kind. A ride around our good old Germantown will show many an old pear, apple or cherry tree, so situated that simply every year washes down around the stem over the roots, and it is wonderful how they grow and bear. Some of these old pear trees are Sockels and the spaces a ton must be procured. Nothing of the kind. A ride around our good old Germantown will show many an old pear, apple or cherry tree, so situated that simply every year washes down around the stem over the roots, and it is wonderful how they grow and bear. Some of these old pear trees are Sockels and the spaces a ton must be procured. Nothing of the kind. A ride around our good old Germantown will show many an old pear, apple or cherry tree, so situated that simply every year washes down around the stem over the roots, and it is wonderful how they grow and bear. Some of these old pear trees are Sockels and the spaces a ton must be procured. Nothing of the kind. A ride around our good old Germantown will show many an old pear, apple or cherry tree, so situated that simply every year washes down around the stem over the roots, and it is wonderful how they grow and bear. Some of these old pear trees are Sockels and the spaces a ton must be procured. Nothing of the kind. A ride around our good old Germantown will show many an old pear, apple or cherry tree, so situated that simply every year washes down around the stem over the roots, and it is wonderful how they grow and bear. Some of these old pear trees are Sockels and the spaces a ton must be procured. Nothing of the kind. A ride around our good old Germantown will show many an old pear, apple or cherry tree, so situated that simply every year washes down around the stem over the roots, and it is wonderful how they grow and bear. Some of these old pear trees are Sockels and the spaces a ton must be procured. Nothing of the kind. A ride around our good old Germantown will show many an old pear, apple or cherry tree, so situated that simply every year washes down around the stem over the roots, and it is wonderful how they grow and bear. Some of these old pear trees are Sockels and the spaces a ton must be procured. Nothing of the kind. A ride around our good old Germantown will show many an old pear, apple or cherry tree, so situated that simply every year washes down around the stem over the roots, and it is wonderful how they grow and bear. Some of these old pear trees are Sockels and the spaces a ton must be procured. Nothing of the kind. A ride around our good old Germantown will show many an old pear, apple or cherry tree, so situated that simply every year washes down around the stem over the roots, and it is wonderful how they grow and bear. Some of these old pear trees are Sockels and the spaces a ton must be procured. Nothing of the kind. A ride around our good old Germantown will show many an old pear, apple or cherry tree, so situated that simply every year washes down around the stem over the roots, and it is wonderful how they grow and bear. Some of these old pear trees are Sockels and the spaces a ton must be procured. Nothing of the kind. A ride around our good old Germantown will show many an old pear, apple or cherry tree, so situated that simply every year washes down around the stem over the roots, and it is wonderful how they grow and bear. Some of these old pear trees are Sockels and the spaces a ton must be procured. Nothing of the kind. A ride around our good old Germantown will show many an old pear, apple or cherry tree, so situated that simply every year washes down around the stem over the roots, and it is wonderful how they grow and bear. Some of these old pear trees are Sockels and the spaces a ton must be procured. Nothing of the kind. A ride around our good old Germantown will show many an old pear, apple or cherry tree, so situated that simply every year washes down around the stem over the roots, and it is wonderful how they grow and bear. Some of these old pear trees are Sockels and the spaces a ton must be procured. Nothing of the kind. A ride around our good old Germantown will show many an old pear, apple or cherry tree, so situated that simply every year washes down around the stem over the roots, and it is wonderful how they grow and bear. Some of these old pear trees are Sockels and the spaces a ton must be procured. Nothing of the kind. A ride around our good old Germantown will show many an old pear, apple or cherry tree, so situated that simply every year washes down around the stem over the roots, and it is wonderful how they grow and bear. Some of these old pear trees are Sockels and the spaces a ton must be procured. Nothing of the kind. A ride around our good old Germantown will show many an old pear, apple or cherry tree, so situated that simply every year washes down around the stem over the roots, and it is wonderful how they grow and bear. Some of these old pear trees are Sockels and the spaces a ton must be procured. Nothing of the kind. A ride around our good old Germantown will show many an old pear, apple or cherry tree, so situated that simply every year washes down around the stem over the roots, and it is wonderful how they grow and bear. Some of these old pear trees are Sockels and the spaces a ton must be procured. Nothing of the kind. A ride around our good old Germantown will show many an old pear, apple or cherry tree, so situated that simply every year washes down around the stem over the roots, and it is wonderful how they grow and bear. Some of these old pear trees are Sockels and the spaces a ton must be procured. Nothing of the kind. A ride around our good old Germantown will show many an old pear, apple or cherry tree, so situated that simply every year washes down around the stem over the roots, and it is wonderful how they grow and bear. Some of these old pear trees are Sockels and the spaces a ton must be procured. Nothing of the kind. A ride around our good old Germantown will show many an old pear, apple or cherry tree, so situated that simply every year washes down around the stem over the roots, and it is wonderful how they grow and bear. Some of these old pear trees are Sockels and the spaces a ton must be procured. Nothing of the kind. A ride around our good old Germantown will show many an old pear, apple or cherry tree, so situated that simply every year washes down around the stem over the roots, and it is wonderful how they grow and bear. Some of these old pear trees are Sockels and the spaces a ton must be procured. Nothing of the kind. A ride around our good old Germantown will show many an old pear, apple or cherry tree, so situated that simply every year washes down around the stem over the roots, and it is wonderful how they grow and bear. Some of these old pear trees are Sockels and the spaces a ton must be procured. Nothing of the kind. A ride around our good old Germantown will show many an old pear, apple or cherry tree, so situated that simply every year washes down around the stem over the roots, and it is wonderful how they grow and bear. Some of these old pear trees are Sockels and the spaces a ton must be procured. Nothing of the kind. A ride around our good old Germantown will show many an old pear, apple or cherry tree, so situated that simply every year washes down around the stem over the roots, and it is wonderful how they grow and bear. Some of these old pear trees are Sockels and the spaces a ton must be procured. Nothing of the kind. A ride around our good old Germantown will show many an old pear, apple or cherry tree, so situated that simply every year washes down around the stem over the roots, and it is wonderful how they grow and bear. Some of these old pear trees are Sockels and the spaces a ton must be procured. Nothing of the kind. A ride around our good old Germantown will show many an old pear, apple or cherry tree, so situated that simply every year washes down around the stem over the roots, and it is wonderful how they grow and bear. Some of these old pear trees are Sockels and the spaces a ton must be procured. Nothing of the kind. A ride around our good old Germantown will show many an old pear, apple or cherry tree, so situated that simply every year washes down around the stem over the roots, and it is wonderful how they grow and bear. Some of these old pear trees are Sockels and the spaces a ton must be procured. Nothing of the kind. A ride around our good old Germantown will show many an old pear, apple or cherry tree, so situated that simply every year washes down around the stem over the roots, and it is wonderful how they grow and bear. Some of these old pear trees are Sockels and the spaces a ton must be procured. Nothing of the kind. A ride around our good old Germantown will show many an old pear, apple or cherry tree, so situated that simply every year washes down around the stem over the roots, and it is wonderful how they grow and bear. Some of these old pear trees are Sockels and the spaces a ton must be procured. Nothing of the kind. A ride around our good old Germantown will show many an old pear, apple or cherry tree, so situated that simply every year washes down around the stem over the roots, and it is wonderful how they grow and bear. Some of these old pear trees are Sockels and the spaces a ton must be procured. Nothing of the kind. A ride around our good old Germantown will show many an old pear, apple or cherry tree, so situated that simply every year washes down around the stem over the roots, and it is wonderful how they grow and bear. Some of these old pear trees are Sockels and the spaces a ton must be procured. Nothing of the kind. A ride around our good old Germantown will show many an old pear, apple or cherry tree, so situated that simply every year washes down around the stem over the roots, and it is wonderful how they grow and bear. Some of these old pear trees are Sockels and the spaces a ton must be procured. Nothing of the kind. A ride around our good old Germantown will show many an old pear, apple or cherry tree, so situated that simply every year washes down around the stem over the roots, and it is wonderful how they grow and bear. Some of these old pear trees are Sockels and the spaces a ton must be procured. Nothing of the kind. A ride around our good old Germantown will show many an old pear, apple or cherry tree, so situated that simply every year washes down around the stem over the roots, and it is wonderful how they grow and bear. Some of these old pear trees are Sockels and the spaces a ton must be procured. Nothing of the kind. A ride around our good old Germantown will show many an old pear, apple or cherry tree, so situated that simply every year washes down around the stem over the roots, and it is wonderful how they grow and bear. Some of these old pear trees are Sockels and the spaces a ton must be procured. Nothing of the kind. A ride around our good old Germantown will show many an old pear, apple or cherry tree, so situated that simply every year washes down around the stem over the roots, and it is wonderful how they grow and bear. Some of these old pear trees are Sockels and the spaces a ton must be procured. Nothing of the kind. A ride around our good old Germantown will show many an old pear, apple or cherry tree, so situated that simply every year washes down around the stem over the roots, and it is wonderful how they grow and bear. Some of these old pear trees are Sockels and the spaces a ton must be procured. Nothing of the kind. A ride around our good old Germantown will show many an old pear, apple or cherry tree, so situated that simply every year washes down around the stem over the roots, and it is wonderful how they grow and bear. Some of these old pear trees are Sockels and the spaces a ton must be procured. Nothing of the kind. A ride around our good old Germantown will show many an old pear, apple or cherry tree, so situated that simply every year washes down around the stem over the roots, and it is wonderful how they grow and bear. Some of these old pear trees are Sockels and the spaces a ton must be procured. Nothing of the kind. A ride around our good old Germantown will show many an old pear, apple or cherry tree, so situated that simply every year washes down around the stem over the roots, and it is wonderful how they grow and bear. Some of these old pear trees are Sockels and the spaces a ton must be procured. Nothing of the kind. A ride around our good old Germantown will show many an old pear, apple or cherry tree, so situated that simply every year washes down around the stem over the roots, and it is wonderful how they grow and bear. Some of these old pear trees are Sockels and the spaces a ton must be procured. Nothing of the kind. A ride around our good old Germantown will show many an old pear, apple or cherry tree, so situated that simply every year washes down around the stem over the roots, and it is wonderful how they grow and bear. Some of these old pear trees are Sockels and the spaces a ton must be procured. Nothing of the kind. A ride around our good old Germantown will show many an old pear, apple or cherry tree, so situated that simply every year washes down around the stem over the roots, and it is wonderful how they grow and bear. Some of these old pear trees are Sockels and the spaces a ton must be procured. Nothing of the kind. A ride around our good old Germantown will show many an old pear, apple or cherry tree, so situated that simply every year washes down around the stem over the roots, and it is wonderful how they grow and bear. Some of these old pear trees are Sockels and the spaces a ton must be procured. Nothing of the kind. A ride around our good old Germantown will show many an old pear, apple or cherry tree, so situated that simply every year washes down around the stem over the roots, and it is wonderful how they grow and bear. Some of these old pear trees are Sockels and the spaces a ton must be procured. Nothing of the kind. A ride around our good old Germantown will show many an old pear, apple or cherry tree, so situated that simply every year washes down around the stem over the roots, and it is wonderful how they grow and bear. Some of these old pear trees are Sockels and the spaces a ton must be procured. Nothing of the kind. A ride around our good old Germantown will show many an old pear, apple or cherry tree, so situated that simply every year washes down around the stem over the roots, and it is wonderful how they grow and bear. Some of these old pear trees are Sockels and the spaces a ton must be procured. Nothing of the kind. A ride around our good old Germantown will show many an old pear, apple or cherry tree, so situated that simply every year washes down around the stem over the roots, and it is wonderful how they grow and bear. Some of these old pear trees are Sockels and the spaces a ton must be procured. Nothing of the kind. A ride around our good old Germantown will show many an old pear, apple or cherry tree, so situated that simply every year washes down around the stem over the roots, and it is wonderful how they grow and bear. Some of these old pear trees are Sockels and the spaces a ton must be procured. Nothing of the kind. A ride around our good old Germantown will show many an old pear, apple or cherry tree, so situated that simply every year washes down around the stem over the roots, and it is wonderful how they grow and bear. Some of these old pear trees are Sockels and the spaces a ton must be procured. Nothing of the kind. A ride around our good old Germantown will show many an old pear, apple or cherry tree, so situated that simply every year washes down around the stem over the roots, and it is wonderful how they grow and bear. Some of these old pear trees are Sockels and the spaces a ton must be procured. Nothing of the kind. A ride around our good old Germantown will show many an old pear, apple or cherry tree, so situated that simply every year washes down around the stem over the roots, and it is wonderful how they grow and bear. Some of these old pear trees are Sockels and the spaces a ton must be procured. Nothing of the kind. A ride around our good old Germantown will show many an old pear, apple or cherry tree, so situated that simply every year washes down around the stem over the roots, and it is wonderful how they grow and bear. Some of these old pear trees are Sockels and the spaces a ton must be procured. Nothing of the kind. A ride around our good old Germantown will show many an old pear, apple or cherry tree, so situated that simply every year washes down around the stem over the roots, and it is wonderful how they grow and bear. Some of these old pear trees are Sockels and the spaces a ton must be procured. Nothing of the kind. A ride around our good old Germantown will show many an old pear, apple or cherry tree, so situated that simply every year washes down around the stem over the roots, and it is wonderful how they grow and bear. Some of these old pear trees are Sockels and the spaces a ton must be procured. Nothing of the kind. A ride around our good old Germantown will show many an old pear, apple or cherry tree, so situated that simply every year washes down around the stem over the roots, and it is wonderful how they grow and