

# Vote UPHAM, SMITH and SHAW and Save This County From the Toils of the C.P.R.

## Staggering Expenditures on Carleton County Bridges

Taken From the Auditor-General's Report

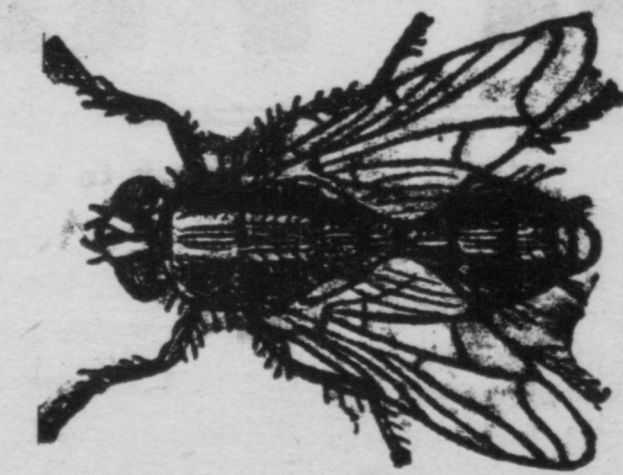
## Premier Flemming Hands Over to "Various Persons" \$8,896.38

POURING OUT MONEY LIKE WATER

Red Bridge.—Gilmore Bros., Lumber, \$161.26; Connell Bros., Hardware, \$27.22; H. E. Burt, Paint, etc., \$15.75; D. Noble, Lumber, \$8.55; D. W. Jackson, Supt., Expenses, \$13.; Paid Freight, \$1.; Various Persons, Wages, \$202.73 .....	\$429 51
Cook Dickinson, Lumber, \$59.; D. W. Jackson, Supt., Expenses, \$5.80; Z. Orser, Spikes, \$2.85; Various Persons, Wages \$13 .....	80 65
J. Martin, Caretaker, One Year, to September 15th, 1910 .....	5 00
Killoil Bridge.—John Connor, Contract Building, \$33.; D. W. Jackson, Supt., Expenses, \$6.75; Wages, \$7 .....	96 75
Broad Bridge.—A. DeMerchant, Lumber, \$15.75; D. W. Jackson, Supt., Expenses, \$3.25; Various Persons, Wages, \$5.24 .....	24 24
Keenan Bridge.—John Hall, Contract Building, \$51.; D. W. Jackson, Expenses, \$3.25; Wages, \$3.50 .....	57 75
Gilmore Bros., Lumber, \$21.84; D. W. Jackson, Supt., Expenses, \$6.15; Various Persons, Wages, \$20.50 .....	48 49
Holmsville Bridge.—A. DeMerchant, Lumber, \$22.50; D. W. Jackson, Supt., Expenses, \$1.20; Wages, \$3.74 .....	32 44
Woodstock Bridge.—Price & Nevers, on Account Contract for Lumber, \$1,181.67; McElroy & Murchie, Lumber, \$423.89; H. E. Burt, Spikes, \$19.51; Various Persons, Wages, \$194.92 .....	1,819 99
Connell Bros., Hardware, \$2.60; H. E. Burt, Spikes, etc., \$21.50; Dunbar Engine and Foundry Co., Iron and Machine Work, etc., \$43.86; W. F. Dibblee & Son, Paroid Roofing at \$2.50 per square, \$166.25; Gasoline, Hardware, etc., \$16.94; Various Persons, Wages, \$367.75 .....	618 90
Various Persons, Wages .....	489 97
Various Persons Placing Timber to Prevent Snow from Drifting .....	4 50
F. A. Glidden, Caretaker, One Year to May 8th, 1911 .....	125 00
Sutton Bridge.—A. DeMerchant, Lumber, \$61.21; Bohan Bros., Posts, \$8.; D. W. Jackson, Supt., Expenses, \$3.75; Various Persons, Wages, \$198.36 .....	271 32
Ingram Bridge.—Aaron Shaw, Contract Building, \$234.; D. W. Jackson, Supt., Time and Expenses, Inspection, \$11.35 .....	245 35
Kinney Bridge.—Connell Bros., Hardware, \$9.85; H. E. Burt, Hardware, \$15.50; C. F. Briggs, Lumber, \$58.; G. Gartley, Lumber, \$25.50; F. Briggs, Lumber, \$45.; G. A. Cronkite, making two Signs, \$8.; D. W. Jackson, Supt., Expenses, \$10.50; Various Persons, Wages, \$133.49 .....	305 84
Jones Bridge.—Jas. Johnston, Contract Building, \$164.25; D. W. Jackson, Time and Expenses, Inspection, \$10.75 .....	175 00
River de Chute Bridge.—Miller Bros., Lumber, \$59.45; B. F. Smith, Lumber, \$106.96; Connell Bros., Hardware, \$12.25; D. B. Baird, Paint, etc., \$5.57; H. E. Burt, Paint, etc., \$15.40; D. W. Jackson, Expenses, \$11.95; Various Persons, Wages, \$302.37 .....	513 95
Big Presque Isle Mouth Bridge.—H. E. Burt, Spikes, \$9.30; B. F. Smith Co., Lumber, \$190.; D. W. Jackson, Supt., Expenses, \$5.25; Various Persons, Wages, \$124.62 .....	329 17
G. C. Turner, Caretaking, 1 Year, \$10.; Repairs, \$5 .....	15 00
Gilmore Bros., Lumber, \$167.07; D. W. Jackson, Supt., Expenses, \$28.60; Various Persons, Wages, \$597.81 .....	793 48
Florenceville Bridge.—B. F. Smith, Contract for Birch and Cedar Lumber .....	2,364 00
Connell Bros., Bolts, \$5.88; Estabrooks & Sherwood, Dynamite, etc., \$2.52; D. W. Jackson, Supt., Expenses, \$6.; Paid Express and Freight, \$1.40; Various Persons, Wages, \$292.99 .....	308 79
Connell Bros., Hardware, \$19.; H. E. Burt, Wire Rope, Chain, etc., \$27.09; Various Persons, Stone, \$30.13; D. W. Jackson, Supt., Expenses, \$6.25; Paid Freight, 70c.; Various Persons, Wages, \$652.97 .....	736 14
Connell Bros., Hardware, \$20.77; L. Hume, Stone, \$8.12; W. F. Dibblee & Son, Spikes, etc., \$7.31; E. McCain, Stone, \$29.14; W. McCain, Stone, \$18.22; H. McCain, Stone, \$6.; D. W. Jackson, Supt., Expenses, \$5.15; Paid Freight, \$1.05; Various Persons, Wages, \$567.99 .....	663 75
B. F. Smith, Lumber, \$942.72; Connell Bros., Hardware, \$126.05; J. F. Everett, Hardware, \$12.24; A. A. Milbury, Blacksmithing, etc., \$61.70; W. R. Fawcett, 5 months Rent Winch and Rigging, \$25.; H. E. Burt, Iron, \$3.50; D. W. Jackson, Supt., Expenses, \$6.80; C. P. Railway, Freight, \$11.94; Various Persons, Wages, \$461.35 .....	1,651 30
H. E. Burt, Paints, \$19.35; Various Persons, Wages, \$10.50 .....	29 85
Wm. Lewis & Son, Bolts, \$185.; H. E. Burt, Iron and Spikes \$58.65; W. W. Wilson, Nails and Spikes, \$5.20; Connell Bros., Link Bar and Wrenches, \$6.50; J. E. Everett, Spikes, Rope, etc., \$6.35; C. P. Railway, Freight, \$23.65; D. W. Jackson, Supt., Expenses, \$10.05; Various Persons, Wages, \$579.13 .....	874 53
J. F. Everett, Hardware, \$3.77; C. P. Railway, Freight, 70c.; D. W. Jackson, Supt., Expenses, \$14.60; Various Persons, Wages \$399.06 .....	418 12
L. A. W. Hunter, 1 Year Caretaking, to April 20th, 1911 .....	80 00
Mitchell Bridge.—Runabout Lumber Co., Lumber, \$84.52; P. Burke, Cedar, \$46.16; Connell Bros., Hardware, \$29.85; H. E. Burt, Spikes, \$4.; D. W. Jackson, Supt., Expenses, \$26.90; Paid Freight, 80c.; Various Persons, Wages, \$392.85 .....	585 08

Lockhart Mill Bridge.—C. R. Lockhart, Lumber, \$172.48; Connell Bros., Hardware, \$92.55; J. Meed, Bolts, etc., \$19.34; M. Welsh, Cedar, \$12.37; H. E. Burt Spikes, \$6.05; D. W. Jackson, Supt., Expenses, \$5.40; Paid Freight and Carting \$3.92; Various Persons, Wages, \$229.49 .....	541 60
Elliott Brook Bridge.—Jos. Lee, Sr., Contract Building .....	950 00
Jos. Lee, Extras, \$50.08; D. W. Jackson, Time and Expenses, Inspection, \$14.20 .....	64 28
Colwell Bridge.—W. F. Dibblee & Son, Hardware, \$4.20; Connell Bros., Hardware, \$2.88; Gilmore Bros., Lumber, \$121.55; C. P. Railway, Freight, \$18.; D. W. Jackson, Expenses, \$6.; Less for Old Lumber, \$4., equals \$2.; Various Persons, Wages, \$100f12 .....	248 75
Hartland Bridge.—Price & Nevers, Lumber, \$1,149.70; Z. Orser, Zinc, etc., \$4.90; Connell Bros., Hardware, \$13.; W. H. Thorne & Co., Spikes, etc., \$50.90; C. P. Railway, Freight, \$5.35; D. W. Jackson, Expenses, \$2.20; Various Persons, Wages, \$529.35 .....	1,755 40
W. Rideout, Stone, \$24.50; Connell Bros., Hardware, \$70.29; W. H. Thorne & Co., Hardware, \$25.; S. T. Sippell, Hardware, \$14.03; W. McAdam, Blacksmithing, \$25.; Price & Nevers, Lumber, \$23.16; C. P. Railway, Freight, \$7.41; D. W. Jackson, Supt., Expenses, \$4.75; Various Persons, Wages, \$640.72 .....	861 86
Price & Nevers, Lumber, \$166.91; H. E. Burt, Bolts, \$2.91; D. W. Jackson, Supt., Expenses, \$3.50; Various Persons, Wages, \$151.23 .....	324 55
S. H. Shaw, Caretaking 1 Year, to May 4th, 1911 .....	80 00
Gilmore Mill Bridge.—Connell Bros., Hardware, \$28.; Gilmore Bros., Lumber, \$206.11; W. F. Dibblee & Sons, Paints, etc., \$23.85; D. W. Jackson, Supt., Expenses, \$25.70; Various Persons, Wages, \$295.72 .....	579 38
Wallace Bridge.—Z. Orser, Hardware and Paint, \$7.; A. W. Pratt, Lumber, \$15.61; M. H. Jordan, Cedar, \$43.16; D. W. Jackson, Expenses, \$13.10; Paid Spikes, 98c.; Various Persons, Wages, \$101.62 .....	181 39
Bell Bridge.—B. Bell, Cedar, \$3.; Price & Nevers, Lumber, \$35.20; D. W. Jackson, Expenses, \$1.50; Various Persons, Wages, \$22.75 .....	62 45
Padget Bridge.—H. E. Burt, Paint, etc., \$5.32; W. F. Dibblee & Son, Hardware, \$3.69; Robinson & Dow, Lumber, \$8.28; Keith & Plummer, Rent Jackscrew, \$1.; Price & Nevers, Lumber, \$19.42; R. E. Robison, Lumber, \$21.20; Various Persons, Lumber and Bolts, \$48.66; D. W. Jackson, Supt., Expenses, \$2.85; Various Persons, Wages, \$149.24 .....	259 66
Balls Mill Bridge.—Gilmore Bros., Lumber, \$43.13; D. W. Jackson, Expenses, \$3.50; Various Persons, Wages, \$34 .....	80 63
Kirkland Bridge.—J. Kennedy, Lumber, \$5.; D. W. Jackson, Supt., Expenses, \$7.25; Various Persons, Wages, \$84.75 .....	97 00
Monument Settlement Bridge.—A. J. Slater, Lumber, \$4.; George Bustard, Lumber, \$2.; Gilmore Bros., Lumber, \$31.50; D. W. Jackson, Supt., Expenses, \$6.25; Various Persons, Wages, \$45 .....	88 75
Brewster Bridge.—J. Hood, Blacksmith, \$3.50; Connell Bros., Washers, \$1.29; D. Lemont, Lumber, \$21.15; D. W. Jackson, Supt., Expenses, \$7.70; Various Persons, Wages, \$56 .....	90 64
Campbell Brook Bridge.—Connell Bros., Hardware, \$16.30; Price & Nevers, Cedar, \$20.70; M. E. Watson, Cedar, \$55.50; McElroy & Murchie, Lumber, \$144.94; W. F. Dibblee & Son, Paint, etc., \$11.66; D. W. Jackson, Supt., Expenses, \$2.; Various Persons Wages, \$333.86 .....	584 96
Kenneth Bridge.—M. J. Love, Hardware, \$3.20; W. F. Lemont, Lumber, \$23.; J. Crawford, Lumber, \$34.46; D. W. Jackson, Supt., Expenses, \$4.40; Various Persons, Wages, \$22.25 .....	87 31
Centreville Bridge.—Amos Downey, 1 Year Caretaking to May 8th, 1911 .....	10 00
Emerson Crouse, Job Repairing Bridge .....	6 00
Chickethawk Bridge.—Leonard Hawthorne, 1 Year Caretaking to April 23, 1911 .....	10 00
McBride Bridge.—Frank L. Boone, Contract Building .....	2,298 00
F. L. Boone, Extras .....	50 67
T. C. Strong, 2 1/2 p. c. Commission for Inspection .....	58 72
Shaw Bridge.—W. R. Fawcett, On Account Contract .....	619 00
B. B. Shaw, 7 1/2 p. c. Commission for Inspection .....	46 43
Lane's Creek Bridge.—P. Smith & Co., Lumber, \$10.25; Wages, \$3.50 .....	13 75
Gilmore Bridge.—D. W. Jackson, Time and Expenses, Inspecting and Reporting .....	7 80
McIntosh Bridge.—Whitman Brewer, on Account Contract .....	675 00
E. McIntosh, 7 1/2 p. c. Commission for Inspection .....	50 63
Monquart Bridge.—H. Giberson, 1 Year Caretaking to April 23, 1911 .....	50 00
Various Bridges.—D. W. Jackson, Supt., Inspecting, etc., Time, \$113.; Expenses, \$86.55 .....	205 55

The above is an exact copy of the Auditor General's Report for the year 1911 as found on pages 87, 88 and 89. Read over these figures for yourself and then examine the bridges and see what is the amount stolen. Also consider what an amount of actual Road work could be done with the money thus recklessly squandered among Political Henchmen and Various Persons.



The female house fly lays from 120 to 150 eggs at a time, and these mature in two weeks. Under favorable conditions the descendants of a single pair will number millions in three months. Therefore all housekeepers should commence using

## WILSON'S FLY PADS

early in the season, and thus cut off a large proportion of the summer crop.

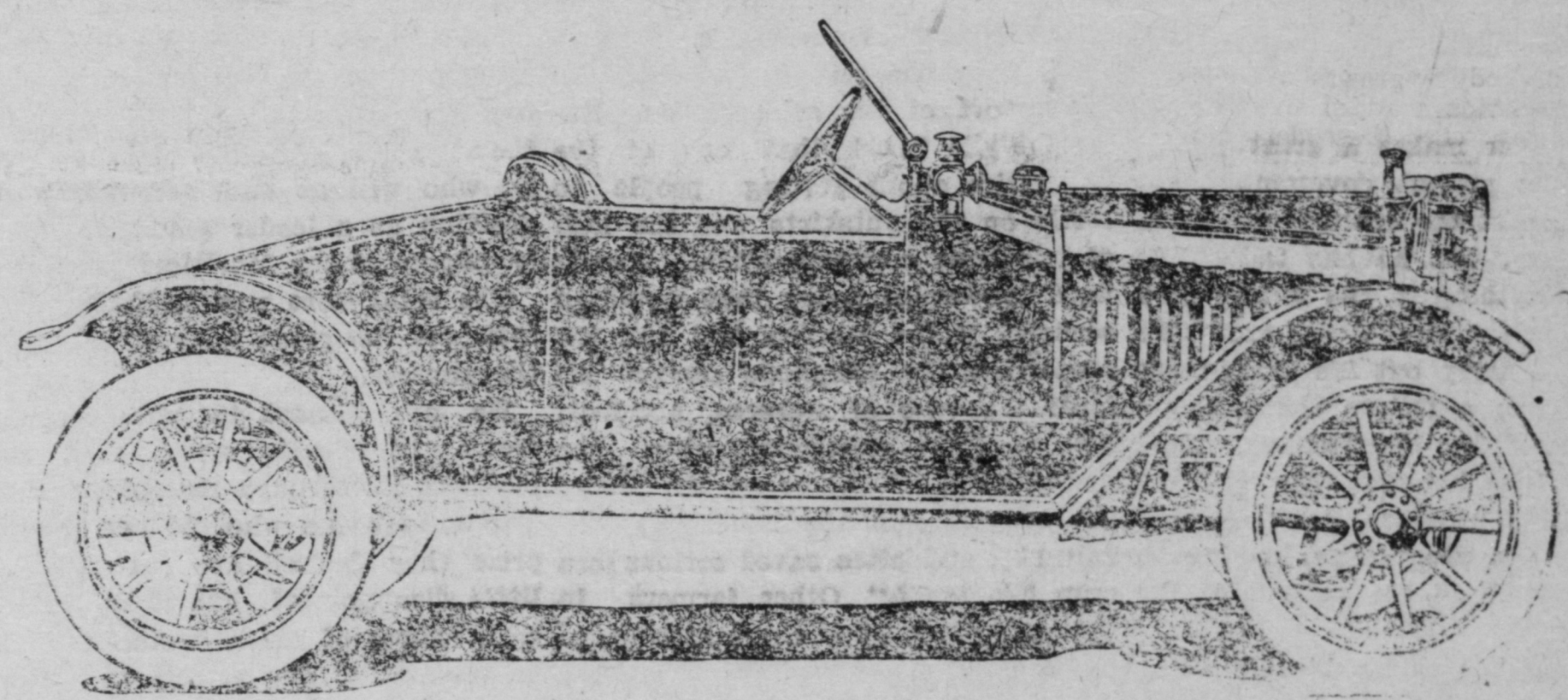
## Clothes Wringers

## Washing Machines

## Brushes and Brooms

# Burt's Hardware

Corner Main and Connell Street



Hupmobile Long-Stroke "32" Touring Car, \$1,000

F. O. B., Detroit, including equipment of windshield, gas lamps and generator, all lamps, tools and horn. Three speeds forward and reverse; sliding gears. Four cylinder motor, 3 1/2 inch bore and 5 1/2 inch stroke. Bosch magneto, 106-inch wheel base, 32x3 1/2 inch tires. Color, standard Hupmobile blue. Roadster, \$1000.

Says it's the best Car on earth to pull in the Mud

## HUPMOBILE

Late last March, when the country roads were at their worst, Earl Sowards drove a recently-bought Hupmobile "32" Touring Car, fresh from the Detroit factory, to his home in Decatur, Ind.

His testimony as to the pulling power of the "32" is so convincing and emphatic that we quote it verbatim from his letter to us describing the trip:—

"It is the best mud-turtle you ever saw. I could not tell you how bad the roads were, for if I did you would not believe me," the letter says.

"I had 23 miles where I never saw a place that the mud was less than six inches deep; and one place the mud came above the running board for a space of 40 rods or more. It is impossible to stick the car.

"The model '32' is the best car on earth to pull in the mud. I know, for I have driven several of the best makes. I have had eight years of experience. I never touched any part of the motor, only to put in oil.

"I was pulling through the mud along by a farmer's house. Just in front of the house was some water, and I thought I would have some fun; so I let my motor die slowly and stopped for a chat. I asked him if he would get his team and pull me out. He answered: 'There are not two teams in the country that could do it.'

"Then I told him that I would have to pull myself, and he said: 'I guess you can stay with me until the mud dries up a little.'

"When I was ready to go on, I started up as if nothing had happened.

"He said he was going to have a car of that kind."

On account of its low centre of gravity, the Hupmobile '32' clings to the road under all conditions, with the least possible sideway and wind resistance.

Absolutely lowest in point of upkeep-cost. You cannot buy better style or better service at any price.

## STANDARD 20 H. P. RUNABOUT \$850

F. O. B., Detroit, with same power plant that took the world touring car around the world—four cylinders, 20 h. p., sliding gears, Bosch Magneto. Equipped with top, windshield, gas lamps and generator, oil lamps, tools and horn. Roadster, with 110-inch wheelbase and highly finished steel box mounted on rear deck, \$950.

GEO. E. PHILLIPS, Agent, - Woodstock, N. B

# Vote For UPHAM-SMITH-SHAW