

## THEY MADE PERFECT ATTENDANCE

### March Report of Town Schools.

#### FISHER.

##### GRADE I

Pupils enrolled, 44.  
Percentage, 79.61.  
Perfect attendance, 9.  
Mary Stevens, Elizabeth Wilson,  
Ruth Greer, Helen Watters, Robert  
Kennedy, Holland Smith, Harold  
Burden, Geoffrey Medler, Frances  
McAlpine.

H. MABEL BAILEY,  
Teacher.

##### GRADE II.

Pupils enrolled, 33.  
Percentage, 86.71.  
Elen Shaw, Doris Carter, Doris  
Grant, George Armour, Edwin Wil-  
son, John McLaughlan, Charles  
Webb, Franklin Creighton.

CLARA M. CARSON,  
Teacher.

##### GRADE III.

Pupils enrolled, 34.  
Percentage, 89.21.  
Perfect attendance, 10.  
Roland Hull, Douglas Nelson,  
Elizabeth Baird, Madeline Sharpe,  
Chester McIntyre, Thelma Taylor,  
Byron Grant, Orville Dalling, Don-  
ald Manzer, Hattie Pringle.

MARGUERITE HANSON,  
Teacher.

##### GRADE IV.

Pupils enrolled, 45.  
Percentage, 89.43.  
Perfect attendance, 11.  
Nellie McFarlane, Emma Norton,  
Helen Nelson, Basil Marsten, Robert  
Grant, Donald Smith, Winston Clark,  
Douglas Stevens, Banfred Colpitts,  
George Dunbar, Charles Crandall.

PAYE M. PLUMMER,  
Teacher.

##### GRADE V.

Pupils enrolled, 52.  
Percentage, 83.92.  
Perfect attendance, 12.  
Mary Thorne, Isobel Mair, Philip  
Marsten, Elen Jamieson, Edine  
Marsten, Eddie Brewer, Gordon Prin-  
gle, Elmer Arnold, James Harrington,  
Edwin Clarke, Elva Jamieson, Wil-  
lie Troy.

FRANCES MILMORE,  
Teacher.

##### GRADE VII

Pupils enrolled, 35.

Percentage, 93.6.  
Perfect attendance, 13.  
Wendell Watson, Hollie Young,  
Walter Hayden, Randolph Jones,  
Douglas Hayden, Mildred Hand,  
John Hall, Harry Duthie, Dorothy  
Jones, Dorothy Loane, Harriet Black  
Hope Jarvis, Everett Shaw.  
AGNES S. CRICKARD,  
Teacher.

##### GRADES VI and VIII

Pupils enrolled, 51.  
Percentage, 93.98.  
Perfect attendance, 21.  
Donald York, Allan Young, Hamil-  
ton Baird, Opal Nelson, Charles Com-  
ben, Dorothy Pringle, Alice Jones,  
Donald Baird, Allyn Perry, George  
Connell, Elva Gillespie, Thelma  
Smith, Charles Hayden, Cleora Ar-  
nold, Ena Hall, Wilfred Lenehan,  
Barbara Foster, Donald Wilcox, Mar-  
jorie Thorne, Elsie Grant, Ruth  
Fleming.

J. MAY L. CARTER,  
Teacher.

##### GRADE IX.

Pupils enrolled, 25.  
Percentage, 95.57.  
Perfect attendance, 5.  
Rita McKinley, Jean Savage, Mar-  
jorie Samphier, Creighton Balmain,  
Muriel Newsham.

JENNIE F. KING,  
Teacher.

##### GRADE X.

Pupils enrolled, 21.  
Percentage, 96.82.  
Perfect attendance, 6.  
Doris Hanson, Mary Pringle, Mar-  
ion Marsten, Beatrice Fields, R. K.  
Jones, Glenn Adney.

J. NEALES,  
Teacher.

##### GRADE XI.

Pupils enrolled, 16.  
Percentage, 87.  
Perfect attendance, 3.  
Annie Gibson, Muriel Merriman,  
Kenneth Hayden.

D. W. WALLACE,  
Principal.

##### BROADWAY.

##### GRADE I.

Pupils enrolled, 40.  
Percentage, 91.92.  
Perfect attendance, 13.  
Hazel Winchester, Shirley King,  
James Augerton, Mary Raymond,  
Arnold Folster, Elsie Brewer, Marion  
Hayden, Hazel Delong, Eldon Quigg,  
Marjorie Britton, Hattie Boyer,  
Arthur Boyer, Harold Crabbe.

ALICE F. POLLEY,  
Teacher.

##### GRADE II.

Pupils enrolled, 36.  
Percentage, 86.  
Perfect attendance, 7.  
Donald Kaye, Merritt Winchester,  
James King, Henry Crabbe, Roy  
Nason, Fay Merrithew, Edwin Mc-  
Kinley.

MARY SLIPP,  
Teacher.

##### GRADE III.

Percentage, 89.89.  
Perfect attendance, 18.  
Albert Babbirk, Victor Thompson,  
Anna Britton, Arden Rogers Harold  
Oldham, Claire Dunphy, Wilbur Cor-  
ey, Marguerite Knox, Jean McMillan,  
Charlotte Hynes, Robert Delong, Wil-  
lie Quigg, Page Kelley, Leona McKin-  
ley, George Merrithew, Katherine  
McQuarrie, Ronald Wilson, Donald  
Weeks.

M. HELEN GARCELON,  
Teacher.

##### GRADES IV and V.

Pupils enrolled, 52.  
Percentage, 87.6.  
Perfect attendance, 19.  
Jean Currie, Goldie Hynes, Walter  
Gilliland, Ross Mowatt, Willie Hayes  
Colby Brewer, Doris King, Andy  
Mowatt, Hazel Sparrow, Margaret  
Hopper, Bessie Folster, Lily McKin-  
ley, Grace Tompkins, Eleanor Weeks,  
Murray Babbirk, Turner Winchester,  
Rowena Britton, Jean Sparrow, Dor-  
is Corey.

MARY MILMORE,  
Teacher.

(Continued on Page Eight)

## A Woman Advises Women

Tyneside P. O., Ont.  
"I received your sample of GIN  
PILLS and after using them I felt so  
much better that I got a box at my  
druggists and now I am taking the  
third box."

"The pain across my back and  
kidneys has almost entirely gone and  
I am better than I have been for  
years. I was a great sufferer from  
rheumatism but it has all left me. I  
strongly advise all women who suffer  
from pain in the back and weak  
kidneys to try GIN PILLS."

MRS. T. HARRIS.

Gin Pills sell for 50 cts. a box or 6 boxes  
for \$2.50 at all good dealers. Sample  
free if you write to National Drug &  
Chemical Co. of Canada, Limited,  
Toronto; or to U. S. address, Na-Din-  
Co., Inc., 222 Main St., Buffalo, N.Y.

TRY

**GinPills**  
FOR THE KIDNEYS



## For Factory - Farm or Dwelling Amazon Roofing



A handsome, durable, economical roof that can be  
laid by anybody without previous experience or spe-  
cial skill. Just unroll Amazon and nail it on the roof.

It is not too heavy to handle easily. It is very  
pliable, easy to cut and fit, and very tough. Nails,  
cement and caps are supplied free.

Amazon is handsome enough for a dwelling, dur-  
able enough for a factory, inexpensive enough for  
farm buildings.

**THE BARRETT CO., LIMITED**  
(Formerly The Barrett-Peterson Bldg. Co., Limited)  
ST. JOHN, N.B. HALIFAX, N.S. SYDNEY, N.S.  
Ad. No. 4.

## For Ton Trucking Purposes

**Ford**  
ONE-TON TRUCK



**B**USINESS men everywhere who have hauling or  
delivering problems to consider—whether operating  
a wholesale business, a retail store, or a farm—will wel-  
come the arrival of the Ford One-Ton Truck.

PRICE

**\$750**

F. O. B.

FORD, ONT.

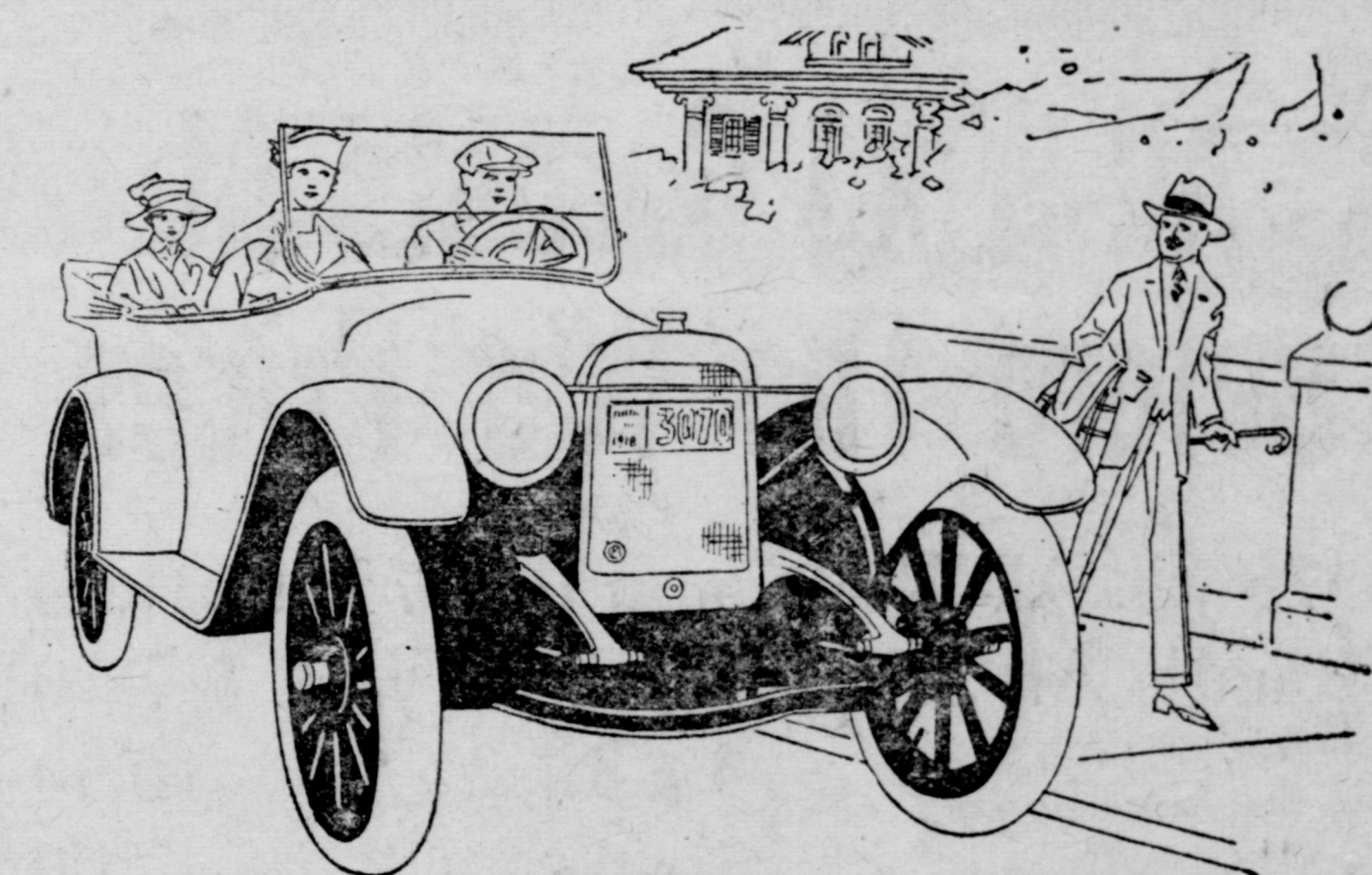
Supplied as  
chassis only

Heretofore, the Ford user who wanted to carry loads  
up to a ton found it necessary to get one of several special  
attachments or extensions which were on the market.  
Now the standard Ford truck is available—a car that can  
withstand the drudgeries of commercial use, and yet  
lacks superfluous weight, and is easily handled.

The truck differs from Ford passenger cars in that it is  
specially designed throughout in proper pattern and  
strength for heavy-duty service. It has a final drive of  
the worm gear type, so that all gears are enclosed. Rear  
wheels are equipped with solid tires. Front tires are  
pneumatic. Standard Ford motor, transmission and  
ignition.

The largest truck and automobile company in the  
British Empire, with an organization of more than 700  
Canadian dealers stands back of every Ford truck  
purchased.

**R. L. Phillips & Co., - Dealers - Woodstock**



## Every Mile out of Every Gallon

*The low-grade gasoline problem solved*

**T**HE Chalmers engine has taken the sting out of the declining  
quality of gasoline.

This great engine not only gains power from low-grade gasoline.  
It stops many motor troubles that come from "raw" or unused  
gasoline.

It turns the very last bit of gas into High Power.

This is accomplished by two simple features—the "ramshorn"  
manifold and the "hot spot." The "hot spot" fully completes  
the evaporation of the gasoline.

The "ramshorn" manifold carries the highly combustible vapor  
hot to the cylinders. There are no sharp turns or corners. No  
traps for raw gasoline. The result is that raw gasoline is not  
carried to the cylinders. Many annoying troubles are thus avoided.

Test the Chalmers engine yourself. Drive it. Try it in any  
weather with any grade of gasoline. Note how quickly it "warms  
up," how quick to start.

Let us give you a thorough demonstration of this great engine.  
To-day's Chalmers with the great Chalmers engine will give you  
a taste of motor performance you will relish. You can't appreciate  
this economical, business-like car until you take a turn at the  
wheel. Come in. Anytime.

## the great Chalmers engine

7-passenger - - \$1,900.00	Sedan - - - \$2,785.00	Town Car - - - \$4,235.00
5-passenger - - \$1,915.00	Cabriolet - - - \$2,375.00	Limousine Landaulet, \$4,315.00
Roadster - - - \$1,915.00	Limousine - - - \$4,235.00	Town Car Landaulet, \$4,315.00

**Frederickton Motor Sales Company**  
FREDERICTON, N. B.

THE CHALMERS MOTOR CO. OF CANADA, LTD. WALKERVILLE

## Why you should look for this Trade-mark on your Shoes

**A** TRADE-MARK is a manufacturers' signature. If a firm makes  
an article they are prepared to stand behind—they stamp it with  
their trade-mark. It is put on their goods so you may identify them.  
It stands to reason, therefore, that it is safer for the public to always buy  
"known" and "trade-marked" shoes rather than "anonymous" shoes.

Each working day of the year, the A. H. M.  
trade-mark is stamped on the soles of thousands  
of pairs of shoes for men, women and children,  
because we want you to know our shoes when you  
see them—because we are making a sincere effort  
to produce good values in footwear—because we  
believe you will find our shoes satisfactory—and  
buy them again and again.

Ames Holden McCready are Canada's largest  
makers of shoes. A. H. M. footwear is sold by thou-  
sands of dealers in every part of Canada—and by  
the leading merchants in almost every town.

We make such a large proportion of the boots  
and shoes that the Canadian people wear that  
you are probably wearing A. H. M. shoes now.  
However, the next time you buy shoes, to make  
sure, look for this trade-mark on the sole.

We make many grades and styles of foot-  
wear, but no matter what price you pay for  
them you will find them excellent value for the  
money. You will find it profitable and satis-  
factory in future to always make this trade-  
mark your guide in buying footwear for your-  
self and your family.

## AMES HOLDEN MCCREADY

"Shoemakers to the Nation"

ST. JOHN MONTREAL TORONTO WINNIPEG EDMONTON VANCOUVER



MONTREAL  
FACTORY

When you buy  
Shoes look for—



—this Trade-mark  
on every sole.

ST. JOHN  
FACTORY

Advertise in The Sentinel.