

COMMERCIAL HOTEL, RICHIBUCTO, N. B.

Philip Woods, Manager.

NEWLY FURNISHED THROUGH-
OUT.

LIVERY STABLE IN CONNECTION.

Hotel Stanley,

KING SQUARE, ST. JOHN, N. B.
J. M. FOWLER, PROPRIETOR.

HOT-WATER HEATING THROUGH-
OUT.

First-Class in all its Appointments.

GRAND ANSE HOTEL, GRAND ANSE, GLOUCESTER CO., N. B.

This house is but a short distance from the Grand Anse Station on the Caraquet Railway, and possesses unsurpassed advantages as a watering place. Bathing, Boating, Fishing, Beautiful Drives, etc., etc. Sample Rooms and Livery Stable in connection.

Charges moderate.
WM. THERIAULT, PROPRIETOR.

Commercial House,

Pictouche, New Brunswick.

V. D. BOURQUE, - - - Proprietor.

This House is run on strictly Temperance principles, and permanent and transient boarders will find it a desirable residence both as regards location and comfort. It is situated within a short distance of the Railway depot, Telegraph and Post Office. Good Sample Room in the building. Stabling on the premises. No pains will be spared to make guests feel at home.

QUEEN HOTEL,

FREDERICTON, N. B.

First-class Livery Stables in connection.

J. A. EDWARDS, Proprietor.

BRUNSWICK HOUSE,

(Opposite Railway Station.)

ROGERSVILLE, - - - N. B.

Open Day and Night.

Sample Rooms on premises. Baggage carried and from Station.

M. O'BRIEN, Proprietor.

BANGOR HOUSE,

13 King Square.

St. John, N. B.

R. CLARKE, - - - Proprietor.

Eureka Hotel,

WELDFORD STATION, I. C. Railway

THIS newly refitted and neatly furnished hotel, is one of the most convenient on the line, being only one minute's walk from the depot. Meals ready at all hours to suit passengers on trains, at reasonable rates. Good Sample Room in connection.

J. W. McDERMOTT, Proprietor.

ADAMS HOUSE,

CHATHAM, - - - N. B.

Sample Rooms and Livery Stable in connection.

THOS. FLANAGAN, Proprietor.

CANADA HOUSE,

CHATHAM, NEW BRUNSWICK.

Wm. JOHNSTON, - - - Proprietor.

This hotel is run strictly on temperance principles and travellers will find it a desirable temporary residence both as regards location and comfort. It is situated within two minutes' walk of steamboat landing and Telegraph and Post Office. Sample rooms for commercial travellers and stabling on the premises. No pains will be spared to make guests feel at home.

VICTORIA HOTEL,

King Street, ST. JOHN, N. B.

D. W. McCORMICK,

PROPRIETOR.

BELMONT HOTEL,

SAINT JOHN, N. B.

(Directly opposite N. B. and I. C. R. Stations.)

J. SIME, - - - Proprietor.

Horse Cars pass the House both ways every five minutes, and connect with all steamboat lines. Baggage taken to and from the station free of charge.

Terms moderate.

NEW VICTORIA HOTEL

248 to 252 Prince William St., St. John, N. B.

J. L. McCOSKERY, - - - Proprietor.

One minute's walk from steamboat landing. Street cars for and from all railway stations and steamboat landings pass this hotel every five minutes.

KEARY HOUSE,

BATHURST, N. B.

Good Sample Rooms, etc., in connection.

For Sore Throat, Diphtheria, Quinsy Croup, apply Dr. Kendrick's white Liment.

CHALEUR HOTEL.

Main Street,
DALHOUSIE, N. B.

This hotel is the nearest to the depot and steamboat landing.

Good sample room.

Terms moderate.

WM. McINTYRE, - - - Proprietor.

Hotel Brunswick,

MONCTON, N. B.

Union Hotel,

OPPOSITE PUBLIC SQUARE,

NEWCASTLE, N. B.

Livery Stable in connection.

H. R. MURRAY, Proprietor.

Leonard Hotel,

AND DINING ROOMS,

Opposite Masonic Hall, Chatham, N. B.

Permanent and Transient Boarders accommodated on reasonable terms.

NEW KENT HOTEL,

Formerly the Exchange,

QUEEN ST., RICHIBUCTO, N. B.

THIS HOUSE BEING FITTED AND REFURNISHED THOROUGHLY, IS NOW OPENED AS A COMMODIOUS RESIDENCE FOR PERMANENT AND TRANSIENT GUESTS.

FURNISHED SAMPLE ROOMS

FOR COMMERCIAL MEN.

Livery Stable in connection.

S. O'DONNELL, - - - Proprietor.

aug289ui

Commercial Hotel,

Moncton, N. B.

WM. BROWN, - - - Proprietor.

Centrally located, and close to Post Office, Custom House, etc. Recently enlarged and refitted. Electric Bells and all modern conveniences.

Sample Rooms and Western Union Telegraph in connection.

Free Hack in attendance to and from all Passenger Trains.

Bay View Hotel,

BUCTOUCHE, N. B.

This new and nicely furnished Hotel is pleasantly situated within three minutes' walk of the Railway Station.

Passengers and Baggage taken to and from the Depot free of charge.

FINE SAMPLE ROOMS IN CONNECTION.

FIRST-CLASS LIVERY STABLE.

aug289ui

THOMAS ROBERTS,

Proprietor.

INTERCOLONIAL HOTEL.

OPPOSITE I. C. R. STATION.

SACKVILLE, - - N. B.

FIRST CLASS LIVERY IN CONNECTION.

TERRACE HOTEL.

AMHERST, N. S.

Large and well Lighted Sample Rooms in centre of Town formerly occupied by Lamy Hotel.

FREE COACH TO AND FROM ALL TRAINS.

W. and W. CALHOUN, - - Proprietors.

The Head Surgeon

Of the Lubon Medical Company is now at Toronto, Canada, and may be consulted either in person or by letter on all chronic diseases peculiar to man. Men, young, old or middle-aged, who find themselves nervous, weak and exhausted, who are broken down from excess or overwork, resulting in many of the following symptoms: Mental depression, premature old age, loss of vitality, loss of memory, bad dreams, dimness of sight, palpitation of the heart, emissions, lack of energy, pain in the kidneys, headache, pimples on face or body, itching or peculiar sensation about the scrotum, wasting of the organs, dizziness, specks before the eyes, twitching of the muscles, eye lids and elsewhere, bashfulness, deposits in the urine, loss of will power, tenderness of the scalp and spine, weak and flabby muscles, desire to sleep, constipation, dullness of hearing, loss of voice, desire for solitude, excitability of temper, sunken eyes surrounded with LEADEN CIRCLE, oily looking skin, etc., are all symptoms of nervous debility that lead to insanity and death unless cured. The spring or vital force having lost its tension every function wanes in consequence. Those who through abuse committed in ignorance may be permanently cured. Send your address for a book on all diseases peculiar to man. Books sent free sealed. Heart disease, the symptoms of which are faint spells, purple lip numbness, palpitation, skips, beats, hot flushes, rush of blood to the head, dull pain in the heart which beats strong, rapid and irregular, the second beat quicker than the first, pain about the breast bone, etc., can be positively cured. No cure, no pay. Send for book. Address M. V. LUBON, 24 Macdonell Ave. Toronto, Canada.

CAUTION.

EACH PLUG OF THE

Myrtle Navy!

IS MARKED

T. & B.

IN BRONZE LETTERS.

NONE OTHER GENUINE

Some Facts About Tennyson Personally.

Tennyson at one time made a practice of running up to London at least once a year, and roaming about as far as possible unrecognized, but no one could pass him by without turning to look at one of the strangest figures that ever trod the streets of modern London. A tall, round-shouldered man, growing stout in these latter days, he always walked with a stick, and gave the impression that he was not altogether free from gout. A long beard covering his face, and he looked out through a pair of large spectacles upon a world, which, on the whole, he was rather inclined to despise. In supplement of his spectacles there dangled across the somewhat shabby-looking tweed dust-coat a pair of gold-rimmed pince-nez. The tweed dustcoat, in color a rusty red, was evidently an acquaintance of many years, and had grown too tight for him across the chest, over which it was nevertheless determinedly buttoned. Dark trousers, with gaiters over his thick-soled boots, and a broadbrimmed felt hat, probably older by some years than the tweed dustcoat, completed the dress of the poet laureate when last he was seen sturdily plodding across Regent's Park.

In Tennyson the poet was exhaustive of the man to a remarkable degree. He existed for the general public only as a poet. He stood at the opposite extreme from Byron's egotistical personality. The man behind the poet was a mystery—an inviolable shade which vulgar curiosity essayed to grasp in vain. His aloofness was a kind that makes Emerson seem in comparison the most sociable of men. In his youth he had a great capacity for friendship within narrow bounds. At Cambridge he was one of Whewell's men, and among these he found his early friends, Arthur Hallam, chief, Fitzgerald, the translator of the Omar Khayyam, the "Old Fitz" one of the most lovely poems of his later life, Milnes, Trench, Maurice, Speeding, and "the lost light of those dawn-golden times," the Rev. W. H.

Brookfield, to whom, with his wife, Thackeray wrote those delightful letters that were published in 1887.

There was never a more purely literary life, and never a literary life confined more closely to a single line of work. Many poets have written a good deal of prose, at least with their left hand. Tennyson confined himself to poetry with a tenacity and exclusiveness strangely matched by the opposing genius of his time. He was devoted to ideal excellence. He was not easily satisfied with his own performance, but ever returned upon it with a critic's eye and a courageous hand. Every cadence, every word, was challenged and assayed. The result was a unique external beauty and perfection, while of high imagination and delightful fancy, soaring thoughts and earnest purpose, there was never any lack in the full tide of his career.

The remoteness of his personal life from the hot crowd and turmoil of his generation was symbolic of the remoteness of his genius from the practical activities and aspirations of his time. He entered deeply into the heart of science, into the doubt and trouble and unrest of the religious world. He made himself the voice of all these things, a voice of hope and cheer. He was an evolutionist before Spencer and Darwin in his confidence in the gradual amelioration of society.

Piles! Piles! Itching Piles.

Symptoms—Moisture; intense itching and stinging; most at night; worse by scratching. If allowed to continue tumors form, which often bleed and ulcerate, becoming very sore. SWAYNE'S Ointment stops the itching and bleeding, heals ulceration, and in most cases removes the tumors. At druggists, or by mail, for 50 cents. Dr. Swayne & Son, Philadelphia. Lyman Sons & Co., Montreal, wholesale agents.

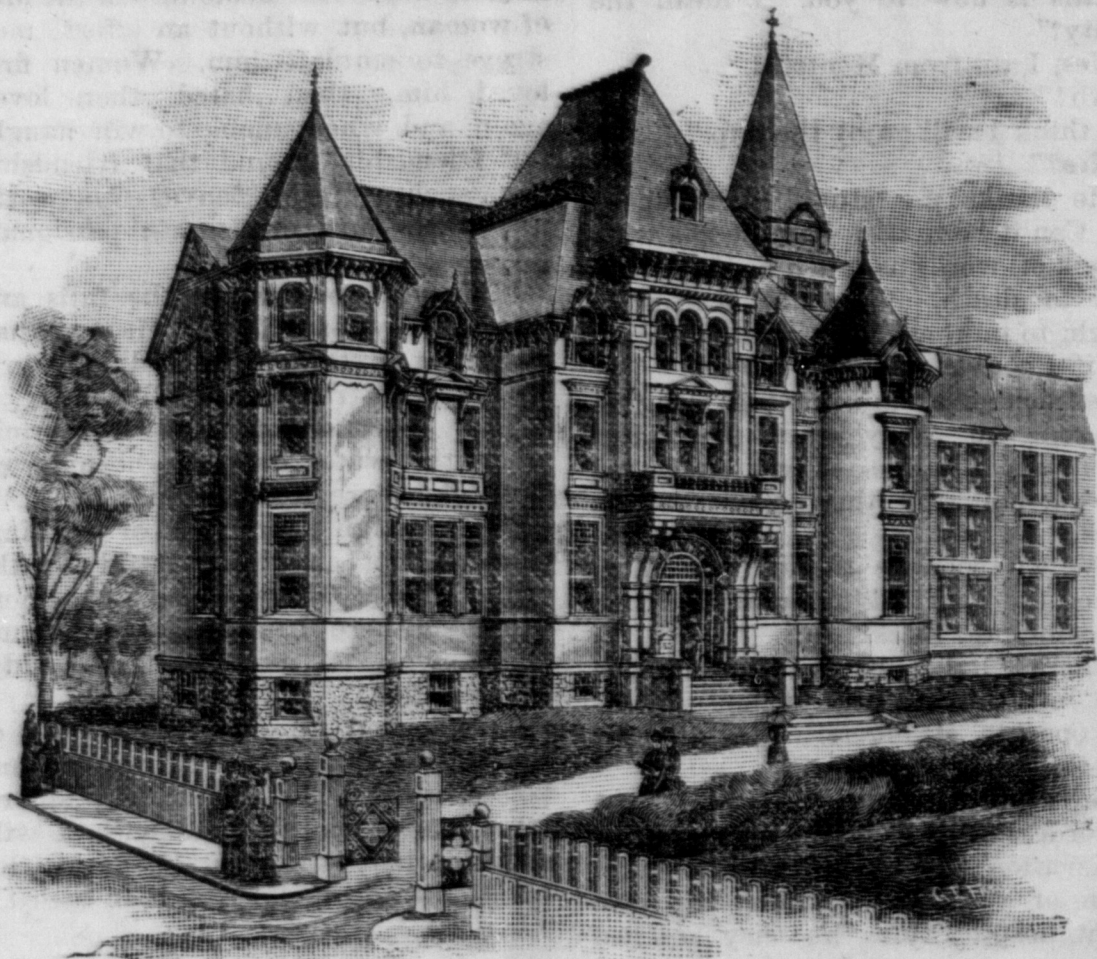
Gallows in South Carolina.

COLUMBIA, S. C., Oct. 6.—Two men and two women will pay the penalty of their crimes on the gallows. A fifth, Gus Deering, an Edgefield negro who killed a fellow workman, has just had his sentence commuted to life imprisonment by Governor Tillman. The governor has decided to let the law take its course in the case of Mildred Brown, a 13 year old colored girl, who poisoned a white infant in Spartanburg. By refusing to interfere in the case of John Williams, a negro who killed Mayor Hennemman of Spartanburg, the governor has prevented a lynching, as a secret committee had made all arrangements to kill him the moment executive mercy was extended. Amanda Tribble, a colored woman of Newberry, will hang for the murder of her own offspring. The other prospective victim of the hangman's noose is a white man, William Wilson, of Anderson, who murdered his wife.

Daniel Kellher

Says that bottle of SCOTT'S CURE FOR RHEUMATISM entirely cured him of a severe attack of Rheumatism in the back. He says: I had such a pain across my back I could not stoop, and had to stop work; but as soon as I had applied the Scott's Cure I got instant relief. I would recommend any one who suffers as I did to try it.

Carleton, May 1, 1890.



Mount Allison Ladies' College and Conservatory of Music, SACKVILLE, N. B.

The 28th Year begins Sept. 1st. Literary Courses extend from Primary branches through University to B. A. degree. Staff of 16 in addition to University Professors. Four teachers of Musical Staff are graduates of German Conservatories. Fine Art, Education, Physical Culture, Shorthand, Piano, Violin, Vocal Culture, Pipe Organ, are all taught by specialists. For catalogue apply to

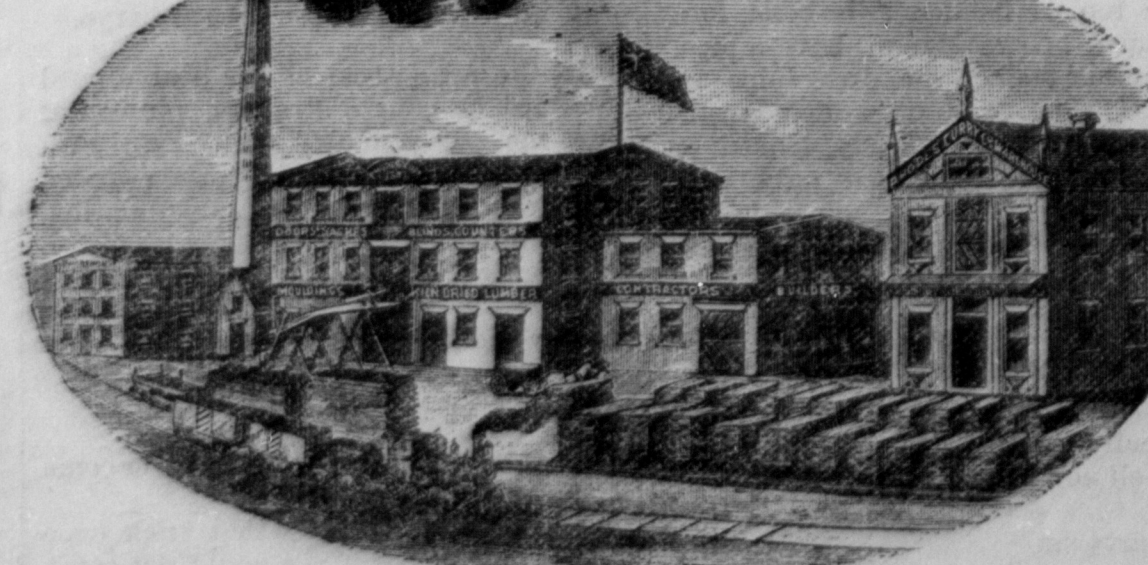
REV. B. C. BORDEN, M. A., Principal.

RHODES, CURRY & CO., Amherst, N. S.

Manufacturers & Builders.

1,000,000 FEET OF LUMBER

KEPT IN STOCK.



Walnut, Cherry, Ash, Birch, Beech, Pine and Whitewood House Finish, Floor Sashes, Blind, Wood Mantels, Moulding, &c. "CABINET TRIM FINISH," &c. Dwellings, Drug Stores, Offices, &c. SCHOOL, OFFICE, CHURCH, and HOUSE FURNITURE &c. Bricks, Lime, Cement, Calceated Plaster, &c. Manufacturers of all kinds of Builders' Materials. Send for Estimates.



BE SURE YOU ARE RIGHT THEN GO AHEAD.
AND FROM THE

testimonials of those who have handled and used our make of goods, we know that we are right in manufacturing the Nonsuch Custom Made Pieced Tinware. The cut shows our NONSUCH CREAMER, the best now in use, made of Heavy Stock, with Patent Gage and Tap, outside fitting Cover, with our Combination Lock Attachment ventilated by 2 1/2 tin screw

KEENAN & RATCHFORD.

WHOLESALE MANUFACTURERS,

8 and 10 Waterloo Street, Saint John, N. B.

Also dealers in Stoves, Ranges and Kitchen Furnishings.

SHORT'S "Dyspepticure" ACTS LIKE MAGIC IN ALL STOMACH TROUBLES

FAST BECOMING FAMOUS
as a Positive Cure for
CHRONIC DYSPEPSIA
and all forms of
INDIGESTION.

"DYSPEPTICURE"
is sold by Druggists at 35c
and 50c. Large Bottles by mail
free, on receipt of 50c.

CHARLES K. SHORT,
51 Garden St., St. John, N. B.
or 71 Niagara St., Buffalo, N. Y.

FAST BECOMING FAMOUS
as a quick and sure relief for
HEADACHE, SLEEPLESSNESS,
NERVOUSNESS,
and all other troubles resulting
from Defective Digestion.

NEW BRUNSWICK STEAM COFFEE AND SPICE MILLS, Paradise Row, St. John, N. B.

ESTABLISHED 1868.

A. LORDLY & CO.,

DIRECT IMPORTERS AND DEALERS IN

SPICES; COFFEE; CREAM TARTAR; ETC.

ROASTING COFFEE, ETC., AT MODERATE RATES.

ORDERS SOLICITED.

ESTABLISHED 1867.

AMHERST BOOT AND SHOE MANUFACTURING CO.

WHOLESALE

BOOT AND SHOE MANUFACTURERS.

AMHERST, NOVA SCOTIA.

WE AIM AT BEING THE LEADING

RUBBER SHOE HOUSE

IN THE PROVINCES.

OUR REPRESENTATIVE FOR NEW BRUNSWICK IS

MR. JAMES McLEOD.

IN STOCK AND BOUGHT TO ARRIVE:

1 car Choice Barbados Molasses. 1 car Roller & Standard Oatmeal.
5 cars Flour—Verbera (Manitoba patent) Pearl, Sunbeam, Peoples' and White Star.

1 car Eastern Herring. 1 car Med. & Hand-picked Beans.
1 car Salt, factory filled and coarse. 3 cars Sugar, granulated and Yellow.
1 cask Cream Tartar.

75 Choice Cheese. 125 half chests Tea.

50 drums Bi-Carb. Soda. 10 bbls. Washing Soda.

Also, Chase & Sanborn's Coffees, Morton's, Stephen's & Lazenby's Mixed Pickles, Soaps, Spices, Vinegars, Confectionery, etc.

FOR SALE LOW.

F. P. REID & CO., MONCTON, N. B.

Just Arrived!

300 BBLs. FLOUR.

The following well known brands:—PRIDE OF WELDFORD; PINE APPLE; CROWN; DELIGHT; EXTRA; will be kept for sale, low for cash at the following places:—My own store at Harcourt Station; Thomas D. Clark's, Bass River; Damien Maillet's, St. Norbert; McInerney's Store, Kingston.

I will endeavor to be at my office, Robertson's Hotel, Kingston, on Tuesday Wednesday and Thursday of each week, and at Harcourt the remaining days of each week.

W. W. PRIDE.

Harcourt, July 8, 1892.

RICHARD SULLIVAN & CO.

—WHOLESALE—

Wine and Spirit Merchants,

—IMPORTERS AND DEALERS IN—

TEAS, TOBACCOS and CIGARS,

54 DUCK STREET, ST. JOHN, N. B.

Bonded Warehouse No. 8.

Subscribe for THE REVIEW