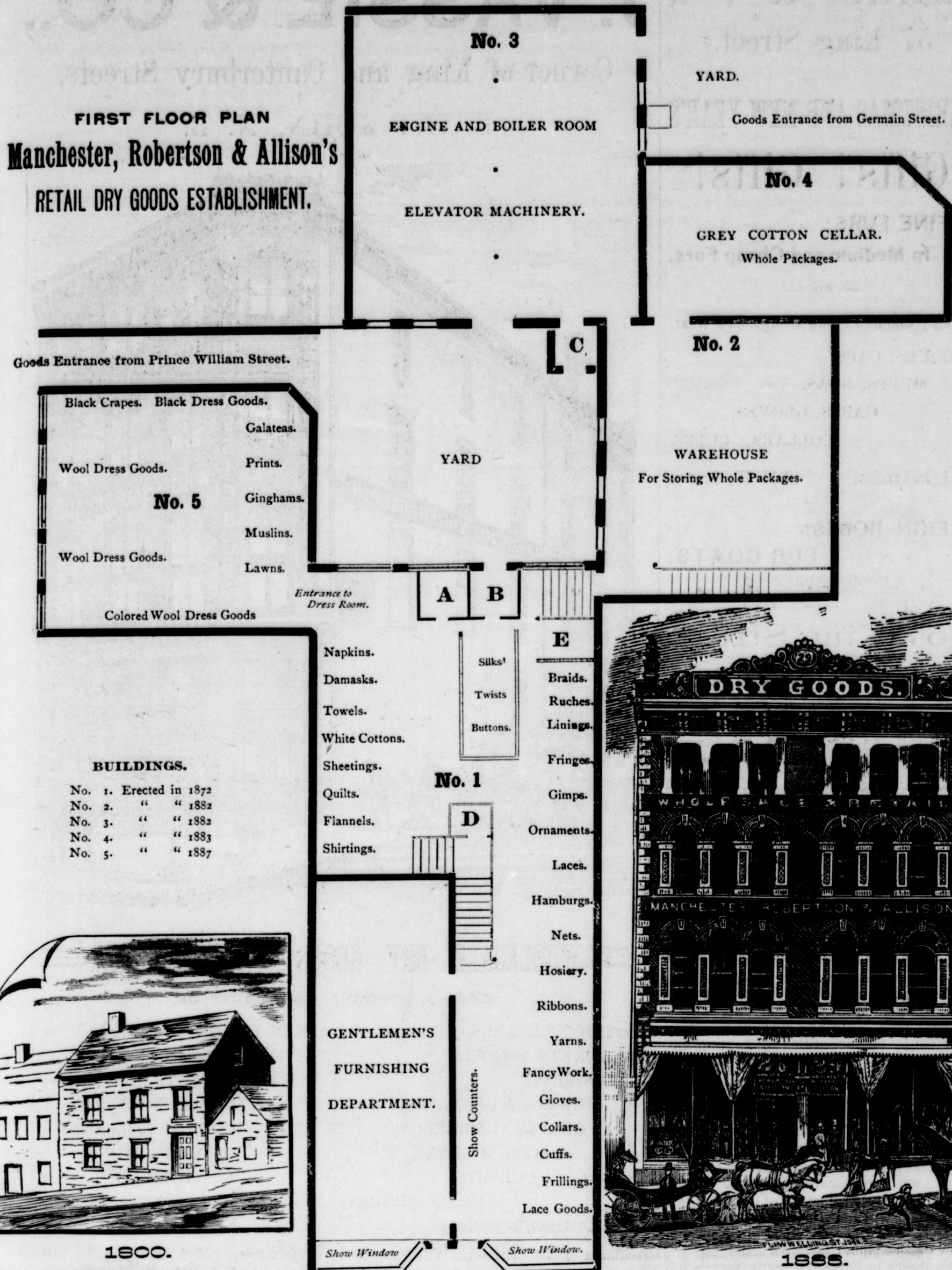


FIRST FLOOR PLAN MANCHESTER, ROBERTSON & ALLISON'S RETAIL DRY GOODS DEPARTMENTS.

FIRST FLOOR PLAN
Manchester, Robertson & Allison's
RETAIL DRY GOODS ESTABLISHMENT.



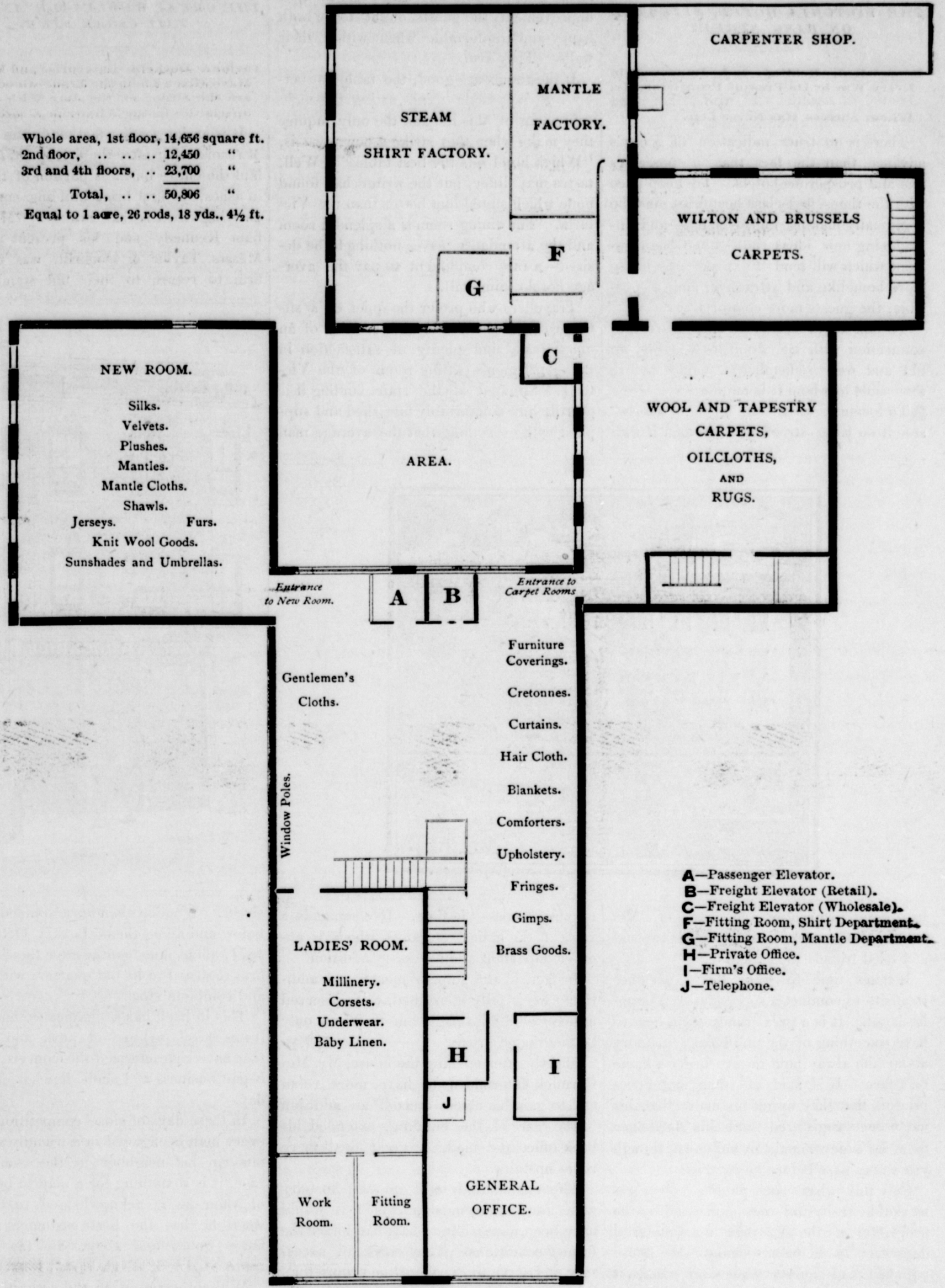
BUILDINGS.

No. 1.	Erected in 1872
No. 2.	" " 1882
No. 3.	" " 1882
No. 4.	" " 1883
No. 5.	" " 1887

A—Passenger Elevator. B—Freight Elevator (Retail). C—Freight Elevator (Wholesale). D—Cash Desk. E—Parcel Office.

SECOND FLOOR PLAN.

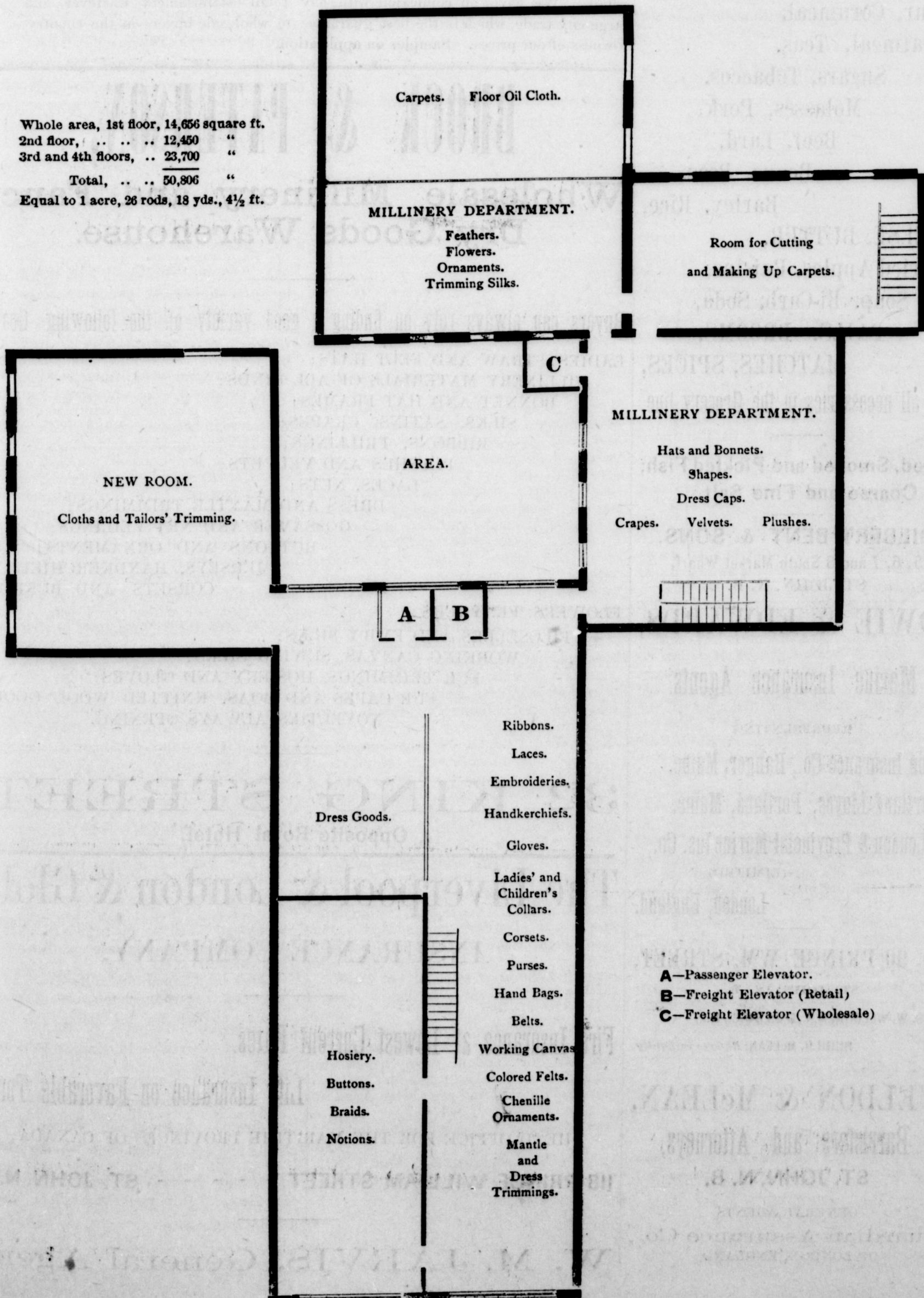
Manchester, Robertson & Allison's Retail Dry Goods Departments.



A—Passenger Elevator.
B—Freight Elevator (Retail).
C—Freight Elevator (Wholesale).
F—Fitting Room, Shirt Department.
G—Fitting Room, Mantle Department.
H—Private Office.
I—Firm's Office.
J—Telephone.

THIRD FLOOR PLAN.

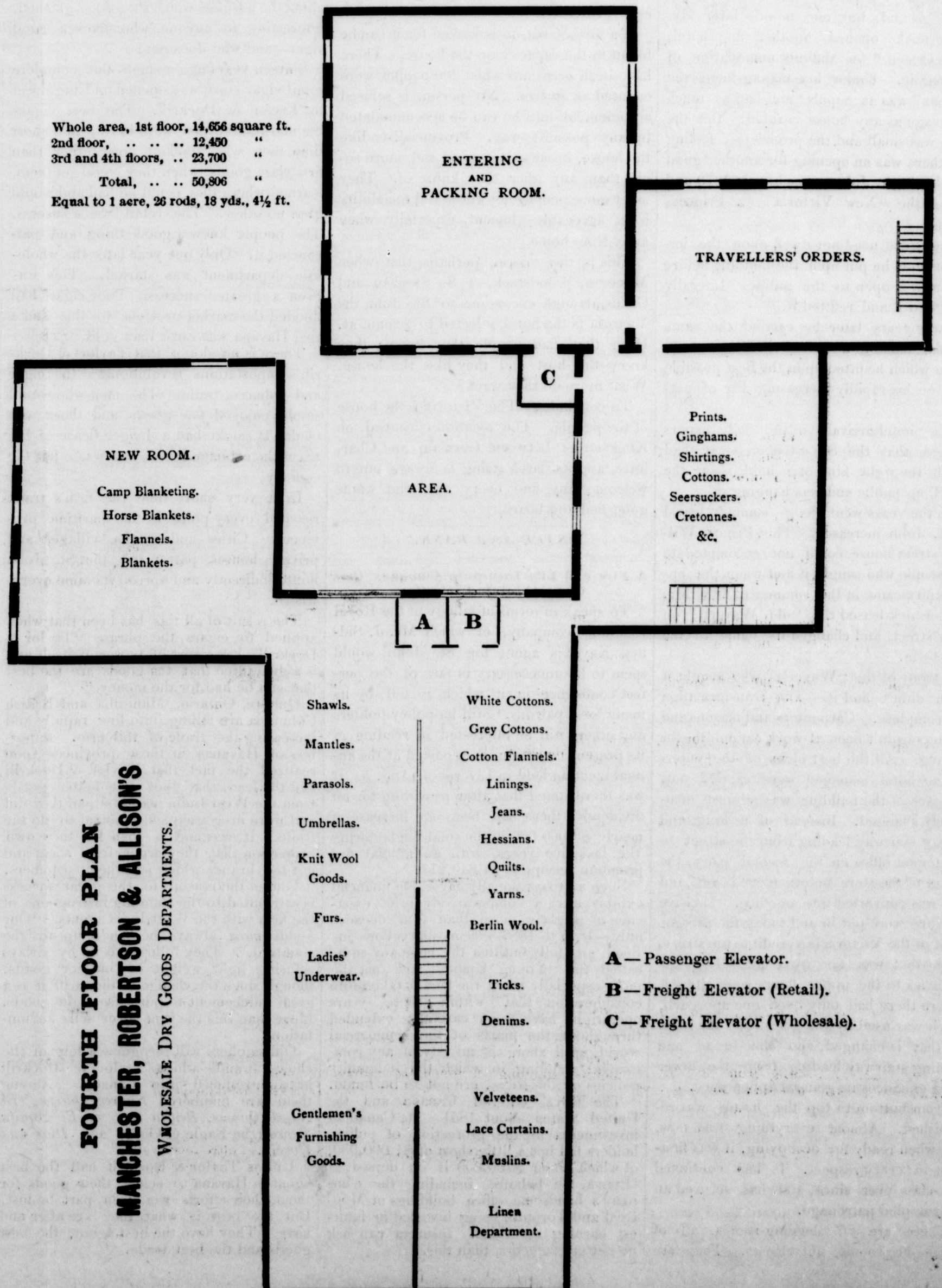
Manchester, Robertson & Allison's Wholesale Dry Goods Departments.



A—Passenger Elevator.
B—Freight Elevator (Retail).
C—Freight Elevator (Wholesale).

FOURTH FLOOR PLAN.

Manchester, Robertson & Allison's Wholesale Dry Goods Departments.



A—Passenger Elevator.
B—Freight Elevator (Retail).
C—Freight Elevator (Wholesale).

FOURTH FLOOR PLAN
MANCHESTER, ROBERTSON & ALLISON'S
WHOLESALE DRY GOODS DEPARTMENTS.