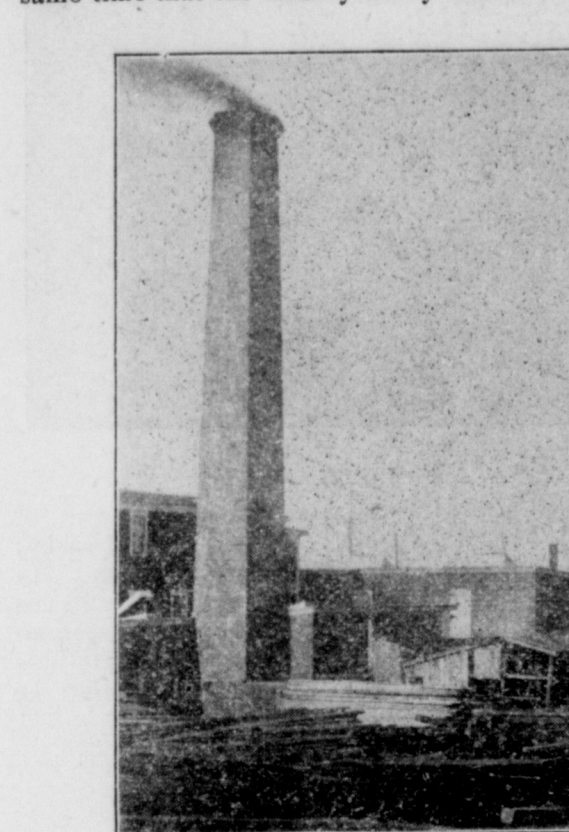


THE HOUSES AND STORES.

HANDSOME RESIDENCES AND MANUFACTURING BUILDINGS.

Three Sample residences Given in One View Also That of L. B. Wyman—The Burrill-Johnson Iron Co.'s Works and a Sample Yarmouth Fish Warehouse.

G. F. Allen & Co. are the proprietors of the Yarmouth Steam Co. and Box Factory situated on Water street. Mr. Allen has always resided in Yarmouth, where he has conducted this business for a quarter of a century or more. The factory was destroyed by fire on July 1st, 1892, at the same time that the Kinney-Haley Manufacturing Co. were burned out. They put up a new four story building as shown in the cut. This was ready for occupation early in January.



Geo. F. Allen & Co.

The basement is for storage, on the first floor is the cooper shop, on the second floor the box stuff is sawed and tied in shooks, on the third floor the boxes are nailed up and on the fourth floor is warehouse room. The building has a frontage of 53 feet, and goes back 104 feet. It is well equipped with first class machinery, which is operated by a 25 horse power engine.

About twenty men are employed in manufacturing barrels of all kinds for pickled fish, kegs and cooperage for dried fish and cooperage and boxes of all kinds both made up and in shooks. The fishermen along the coast from Digby to Shelburne are supplied by Mr. Allen. It is an unusual and interesting fact that in this country, which has lost so many young men by the exodus Mr. Allen has four sons working with him.

The firm has a saw mill at Brazil Lake, thirteen miles from town, in the western counties. Here he gets all his lumber for the factory sawed to order. The mill gives employment directly to fifteen men, and indirectly to a large number engaged in procuring logs. He manufactures here a great

manager and these with A. W. Eakins, form the board of directors.

They manufacture woodwork of all kinds, including furniture, doors, sashes, blinds, hand rails, posts, balusters, mouldings, brackets and fittings of every description in woodwork. They are also dealers in every description of house building. Their specialty is church and office work of which they do a great deal. This summer they supplied the fittings and decorations for five churches. They have a plant of entirely new machinery, the latest and best that can be had.

Their buildings, of which a portrait is shown, are large and spacious and well lighted. They are entirely new, for on July 1st, 1892, they had the misfortune to

deal of work this summer. They intend to give special attention to fittings for summer cottages. Alvin Haley, brother of the manager, is superintendent of the factory, and it is in great part due to his careful superintendence and genial manner that the company have built up such a large and, we trust, profitable business.

PARKER, EAKINS & CO.

The house of Parker, Eakins & Co., commission merchants, wholesale grocers and export dealers in fish, was established in 1874. The members of the firm are Edward F. Parker, Arthur W. Eakins, Chas. S. P. Robbins, and Abel C. Robbins. They own and occupy the extensive premises known as Young's wharf at the foot

years ago he started on his own account. He opened on a very limited scale in a very small room, but since then there has been steady growth until now he occupies a large amount of floor space and gives employment to several clerks.

One of the very handsomest residences in this town of hundreds of handsome residences, is that of Mr. Wyman, just constructed this year. It is located in a commanding position on the corner of Park and Cliff streets, and from it is had a magnificent view of the harbor and bay. It is built in the Queen Anne style and is a large three-story building. The exterior

latest and very best type of automatic engines with all the best improvements. They also make a specialty of the manufacture of steam pumps of all kinds from the small feed pumps to the largest air and circulating pumps that will pump several millions of gallons per day, also water works pumps of any capacity. For all goods in the water works line such as hydrants, gates, specials, &c., &c., this company are headquarters. They have long been known for their marine work and being the pioneers in this line for these provinces can furnish anything in the way of machinery and boilers from the smallest tow boat to the large

EDUCATION AND RELIGION.

Yarmouth Institutions—Educational, Religious—Benevolent.

Yarmouth is unlike most of the towns in the maritime provinces in that its own capital is invested in all its enterprises of a public nature. It had sufficient wealth itself to found and establish firmly all the institutions and undertakings which are now doing so much to benefit the city. No American or English capital had to be imported and in fact none even scarcely from outside towns in the provinces we find, for instance, Yarmouth capitalists controlling more or less largely



Warehouses of Parker, Eakins & Co.

displays excellent taste in the way of tints, and in its rich carvings. The interior trimmings are chiefly in oak, and one of the suite of drawing-rooms in cypress. The artistic work is very fine and the building is a monument of architectural skill.

The residence has all the modern improvements in the way of gas and electric lighting, hot and cold water, &c. It is heated by a system of indirect heat, by which cold in coming into the basement in pipes passes through a box where it is heated by hot water pipes which traverse the box. It then passes through the house which is thus supplied constantly with fresh

ocean going steamers. They were the builders of the S. S. St. Pierre which runs from Halifax to St. Pierre, as well as of very many boats that are running in different parts of the province, and can supply hull and machinery ready for sea, with a guarantee that all will be in perfect working order. They also make a specialty of steam winches, mill machinery and boilers of all kinds, stone breakers and a very great variety of all kinds of machinery, it is safe to say they make a greater variety than any other concern in Canada. They are always ready to give prices for anything in their line.

and generally entirely the lines of travel, the factories, the electric car service and the lighting of the city.

Let us conclude these general articles by giving some account of the towns possessions, educational, religious and benevolent and of those things then which contribute to public convenience and amusement.

Yarmouth is well equipped with churches. It is a town of churches, a town devout in its nature and one which sees the importance of giving and doing as well as speaking. The Episcopal Holy Trinity, is a handsome brick structure standing on William St. the Rev. Dr. Cartwright is rector.



Kinney-Haley Manufacturing Co.

along by a fan, and thus a current of fresh warm air is being passed through the shop all the time. In the basement is placed the shafting, on the first floor the rough work is done and on the second floor the finer work is done. Here also much of the stock is kept. A drafting room is soon to be fitted up in the town.

The engine house is a fire proof building and contains a L-shaped engine of 80 horse power. The chimney is 75 feet high. The dry kiln, the "Common Sense," operates on a new principle. Instead of driving in fresh quantities of hot air, the air from the kilns is sucked out by means of a fan and made to pass over cold pipes. These con-

Something is done also in preparing boneless fish for the domestic market. A brand of boneless codfish which they put up in very attractive packages under the name of "Nova Scotia Turkey" has gained a large demand in Toronto as well as elsewhere in the upper provinces. It may be said that in addition to the lines of trade indicated, Messrs. Parker, Eakins & Co. fill orders for lumber and sawing for foreign markets. They have admirable facilities for that business, the track of the Yarmouth & Annapolis railway running from their own mill on the Meteghan River to alongside ship on their wharf at Yarmouth.

The Burrill-Johnson Iron Company was established in 1855 and incorporated in 1878. The officers of the company are Hugh D. Cann, President, Charles H. Bryant, Vice-President and Secretary. The other directors are William D. Lovitt and A. C. Robbins, of Yarmouth, and John White, of Halifax, N. S. They have

air. The house is surmounted by a large cupola, from which the view over the surrounding country is very fine. The whole decoration of the house is of an even, substantial excellence. The grounds around have been laid out in a velvety lawn, and a hedge has been planted which will spring up to a good size in a couple of years.

THE BURRILL-JOHNSON IRON CO.

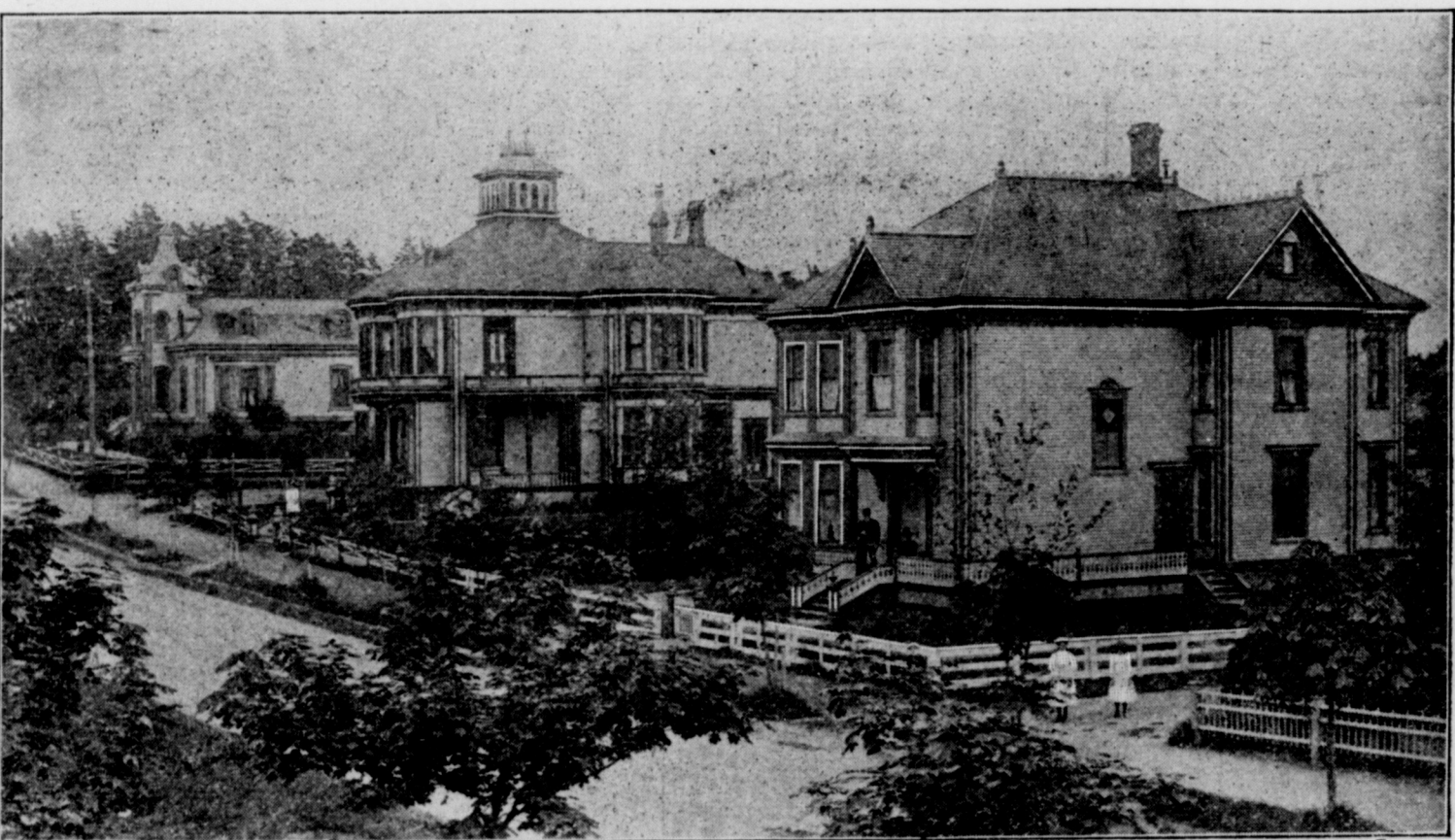
The Burrill-Johnson Iron Company was established in 1855 and incorporated in 1878. The officers of the company are Hugh D. Cann, President, Charles H. Bryant, Vice-President and Secretary. The other directors are William D. Lovitt and A. C. Robbins, of Yarmouth, and John White, of Halifax, N. S. They have

Residence of L. B. Wyman.

Their stoves rank high and are well known as the best in the market. The castings are of the finest quality, and the stoves are sure to work to the satisfaction of those who use them. Their leading range, the "Model Grand," has a reputation second to none in America. Hundreds have been sold and in no case have they failed to do their work to the satisfaction of those who use them. This Range is made in many different styles, and every one is warranted. They are also sole manufacturers for Canada of the celebrated "New Silver Moon" base burners, so well known throughout the Maritime Provinces. They hold the patent for the celebrated soft coal cook stove, "Victor," and manufacture a large variety of such cook-

The Methodists are represented by Wesleyan Providence, both on Main street. The Baptists have three churches—Temple, on William street, Rev. G. R. White pastor; First, on Main street, Rev. J. H. Foshay pastor, and Milton, on Elm street, Rev. J. E. Goucher pastor. Rev. E. D. Millar is pastor of St. John's Presbyterian and Rev. C. F. Cooper of the Free Baptist church. The Congregational Tabernacle has just been opened and is a very handsome stone structure. Rev. Wm. McIntosh has charge. The Roman Catholics built a very fine brick cathedral back of the town last summer.

The town is well equipped with schools. The Academy has accommodation for 500 pupils. Principal Cameron, the head of



Private Residences.

deal of cooperage stock and also considerable in the way of house frames and boarding in stock. Mr. Allen, the genial proprietor, is a thorough business man, and backed up now as he is by his four sons, it is only to be expected that his business will assume large proportions.

THE KINNEY-HALEY MANUFACTURING CO. was started about forty years ago at Salem, just out of town. About ten years later it was burned out and moved into town. In 1881 it started as a limited company with \$20,000 capital. The stock is all held by Yarmouth people entirely, E. K. Spinney is president, John H. Haley is

dense the moisture from the air and it passed into the kiln again dry. In this way the same air is used over and over again, and is kept free from moisture. The company are careful in their precautions against fire.

The shipping facilities are excellent. The factory is on Water street, the wharves are just in front of the rear door and the railway just before the front door, so that they can load car or hull right from the factory. They sell in Shelburne, Yarmouth and Digby principally. They have capacity for about fifty men and employ about twenty-five. Their business is large and they have turned out a great

Mr. L. B. Wyman, whose handsome residence is reproduced, conducts the leading grocery business in the town. His place of business is on Main street, in a central locality. He is a wholesale and retail dealer in flour, sugar, molasses, tea and coffee, dried fruit and canned goods, tobacco and cigars. Everything in fact, that is found in a first class grocery is kept there, both articles that are rare and articles of the best brands.

Mr. Wyman is Yarmouth born and rose from the ranks to his present condition of business prosperity. He was associated with his brother in business and fifteen

branch houses in Halifax N. S. and St. John N. B. John White has charge of the Halifax house, Messrs. Coles & Sharp have charge of the stove branch in St. John and L. G. Holder & Co. have charge of the Machinery house at 115 Mill street.

The goods of all kinds manufactured by this Company have a very high reputation for excellence and are well known all over the Maritime provinces. In the machinery line they make a great variety, such as steam engines of all kinds from one and one half power upwards. They are sole makers of the Celebrated Fitchburg High Speed Automatic Engines from 20 to 550 Horse Power. These engines are of the

Burrill-Johnson Iron Company.

ing stoves as the "Island Crown," "Happy Homes," Yarmouth Cooks," "New Dominion," "Boston Cooks," "Leaders," "Niagaras," "Waterloos," "Farmers," "Caboozes," &c., &c. They also manufacture the best open Franklin stove to be obtained, called the "Orient," as well as a very great variety of hall, office, store and parlor stoves, and hot water heaters and other kinds of heating apparatus. The Company has a large business, and are ever wide awake to the interests of their customers. The very best materials and first class workmen together with superior facilities are happily combined and the natural consequence is unsurpassed goods.

the school, has become famous as an astronomer and as a return for his researches France has bestowed upon him high honors. Each section of the town has a school, Milton, the centre and the lower end, accommodating together about 1400 scholars. Another building is to be erected. In the way of private enterprise there is a business college besides other schools.

The other great educator; the press, is well represented. The Herald known as a weekly but virtually a bi-weekly, has existed for sixty years. The Times is also a bi-weekly and the Light a weekly.

There are three benevolent institutions, The Old Ladies Home is a pleasantly situated