

A FUEL BUSINESS.

Some of the Features of a Modern Equipment for Handling Coal, Wood and Kindling.

Much of the Heavy, Dirty and Costly Labor Saved by the Use of Patent Automatic Machinery.

One of the most interesting questions in the public mind for some time past has been the fuel question and as a large number of the people have had to pay much higher prices than usual for fuel during the winter season just closing, they will now be doubly interested in every suggestion that may be given them to save money on further purchases of coal and wood.

It has been the experience of those who



No. 8—Pouring Coal From the Hoppers.

have watched the matter closely for years, that it pays best to buy in coal as early as possible during the summer months for during the spring and summer the miners and shippers have to make coal rates low in order to move the coal, and lower freights are also obtainable from the vessels which bring the coal to this port.

The coal firm owning a large delivery

import only the best grades of hard and soft coals from mines which have become celebrated by the quality of their products.

Their hard coals are all specially prepared in the "Breaker," the "Breaker"

handling of the coals so that consumers may be served promptly and with satisfaction.

Ever since they took the old Mill building on the Long wharf and fitted it up as a

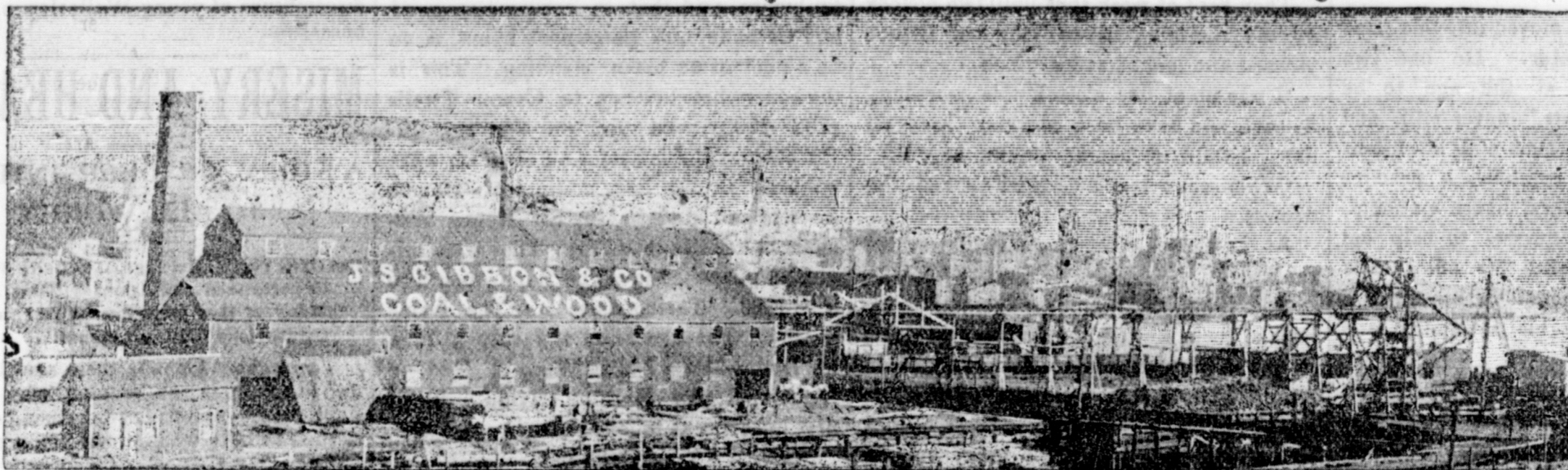
trestle on which the firm's huge sign stands out towards the harbor so prominently is the Steam Shovel tower containing the hoisting engine and other equipment, necessary to operate the steam shovel for

aid of hand labor.

An entirely new device is now being arranged, by which the coal can be picked up again out of the sheds with the steam shovel, and put into hoppers at the front of the sheds, from which it can be poured out over as screen to load the carts, as shown in the following picture of cut No. 8.

It will pay any one who is interested in the labour saving devices, to call at Gibbon & Co's new coal docks, Smythe St., and see their machinery in operation.

And no less interesting than the coal handling machinery is the equipment for preparing the wood and kindling ready for use. Here are bunching machines with boys employed to put up bunches of kind-



No. 4—Gibbon & Co's. Old Long Wharf Coal Depot.

being the name given to the huge black misshaping building shown in the accompanying cut, No. 3.

This building is located at the pithed, the coal being elevated from the mine to the top of the "Breaker" where it is crushed into the chestnut, nut, egg and other sizes and separated by revolving screens,

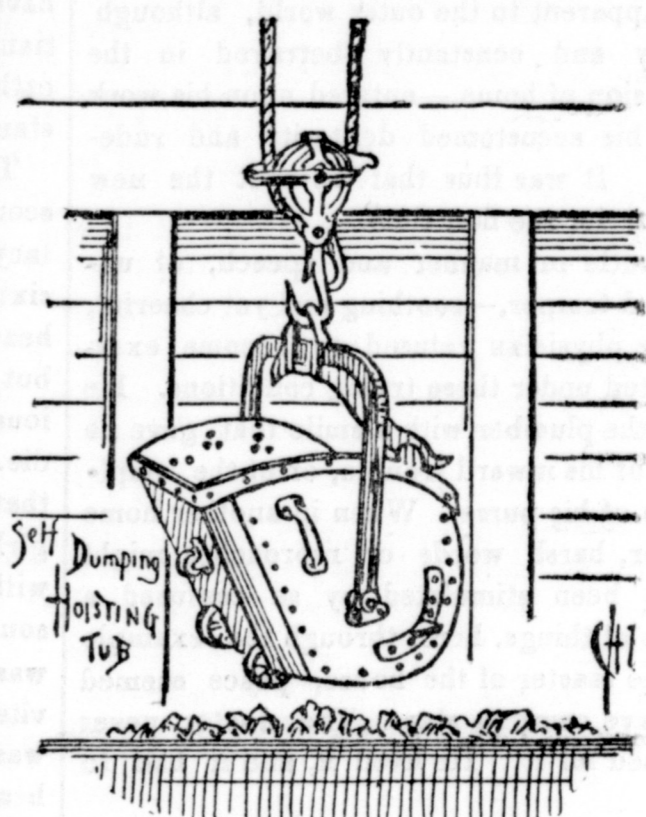
modern coal and wood handling depot a few years ago the business of this firm has been steadily increasing.

Their property on the Long wharf a view of which is here given in cut No. 4, having been expropriated by the government to make room for the new I. C. R. terminal facilities, Gibbon & Co., had to look for

discharging coal from vessels. This shovel is shown in the cut No. 6, and is capable, in vessels with large hatches, of taking out a ton at a time and making a trip every minute.

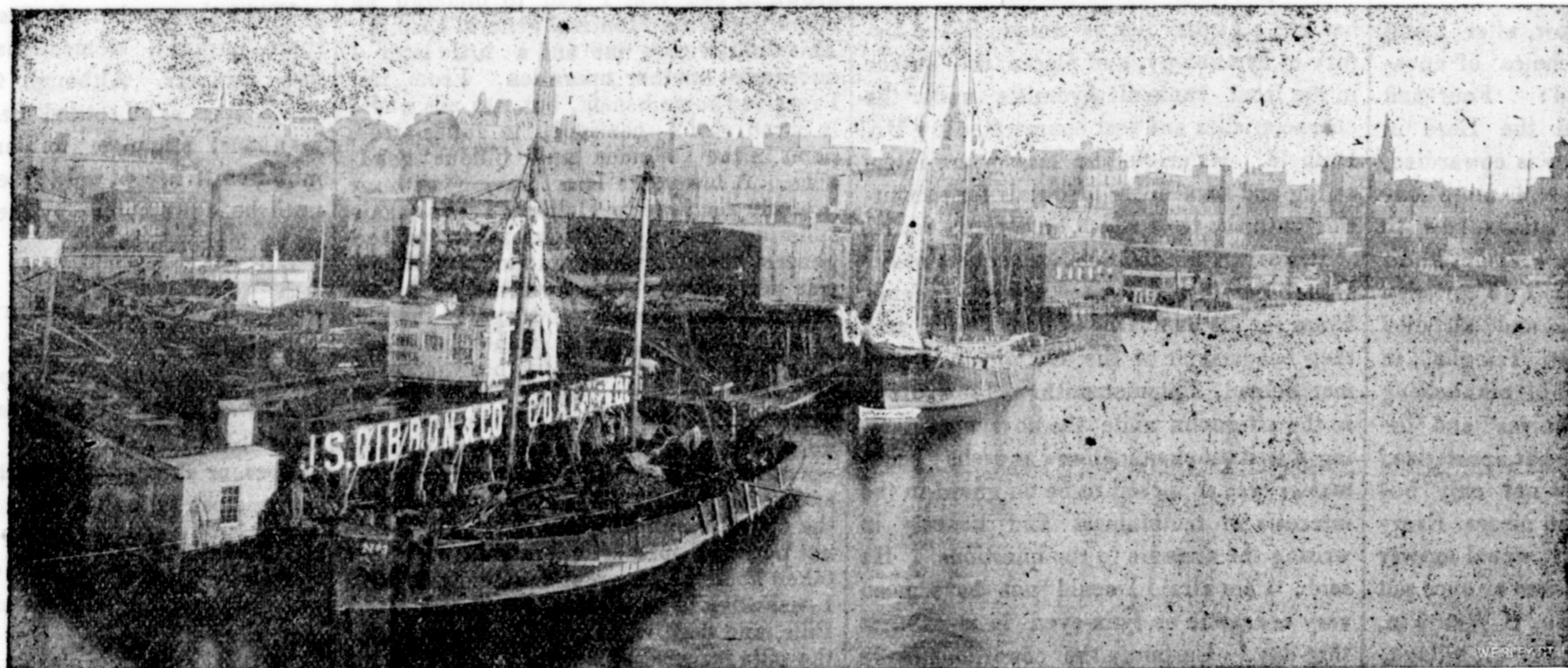
For vessels in which the steam shovel cannot be used owing to the hatches being small, patent automatic self dumping tubs

ling in the shape it is sold in the stores in Boston and New York. A chain belt conveyor carries the wood from the sawing machine and deposits in the different bins ready for delivering, and the hard wood is split up ready for use by means of a large double wood splitting machine at which two



No. 7—Self-Dumping One-Half Ton Tub.

small boys can split more wood in a day than ten men working with axes in the old fashioned way. In this department are prepared their fine specialties in the shape of the best hard woods, rock maple, yellow birch, etc. Sawed to any length required.



No. 5—New Coal Dock With Barge Discharging by Steam Shovel.

equipment of horses and waggons and having a discharging equipment with foremen, engineers and yardmen to keep employed, as only Messrs. Gibbon & Co. in this city are situated, are also during the spring and summer willing to make sales to everybody who can buy coal for cash at the lowest possible rates, and the saving which they are enabled to make in the handling of the fuel business by use of their improved machinery and facilities they are willing to share with or often to give altogether to those who favor them with cash orders early in the season.

Below cut No. 1. shows their uptown office which is open all day up to ten o'clock in the evening, solely for accommodating those who find it more convenient

each size sliding down through separate chutes where it is inspected by rows of

other quarters to carry on their business and after a considerable amount of inconvenience

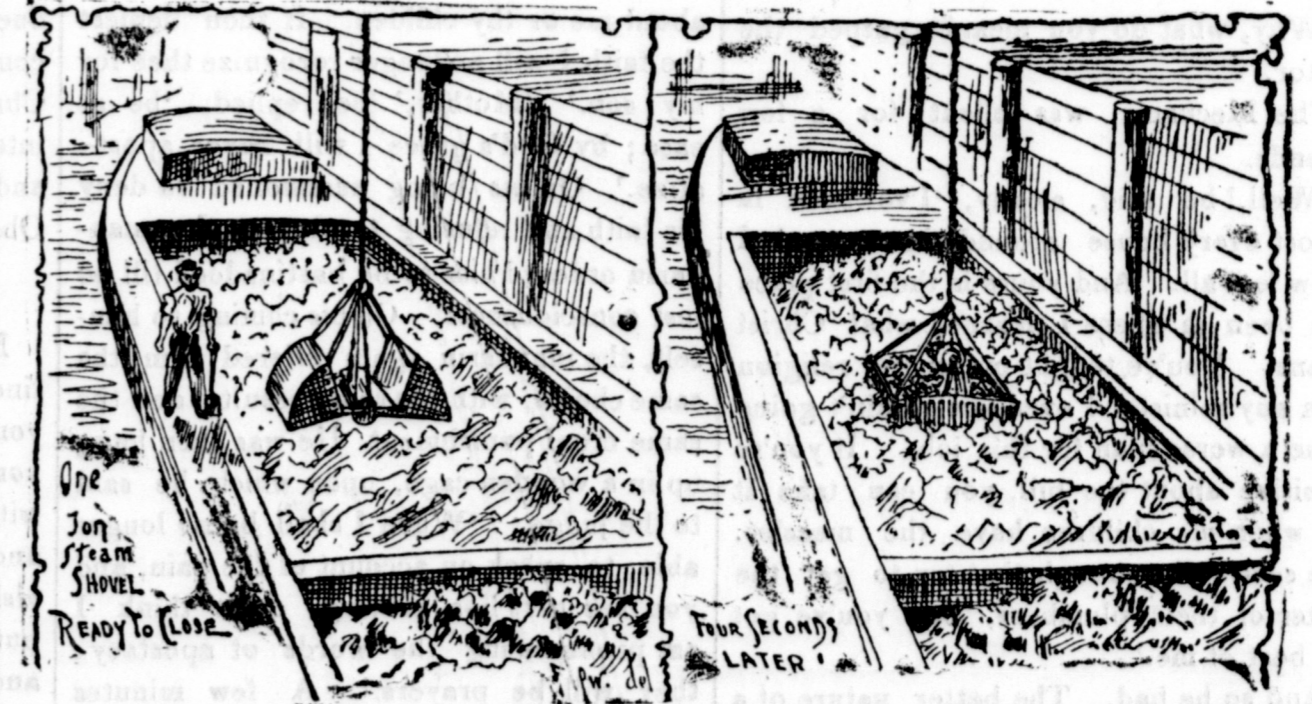
containing a half ton each are used. These tubs, as shown in cut No. 7, are shaped so that they can be pushed up



No. 9—Three Ton Cart.

and delay were enabled to secure the Robertson Upper Wharf, a splendidly situated deep water wharf next to North wharf and fronting on Smythe street.

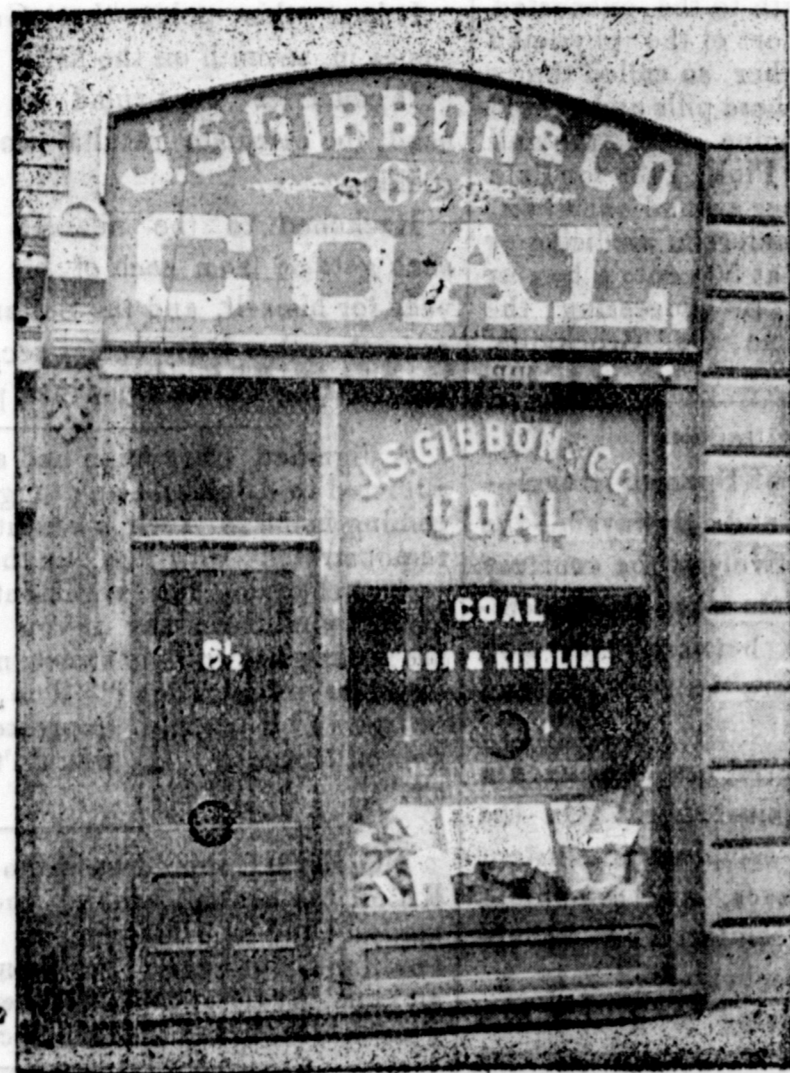
On this wharf were the sheds occupied in former years by the late R. P. McGivern, R. B. Humphrey and several other dealers; in addition to this wharf they also



No. 6—Steam Shovel at Work.

against the pile of coal, so that the shovellers can almost fill them by rolling the heap into the tub, and then complete the operation by throwing in a few scooptules from

The firm are continually making additions to their delivery equipment. The latest thing in this line is an immense four wheel dump cart large enough to carry



1—Uptown Office.

or wood than to go down about the dirty wharves.

While handling the larger variety of fuels of any firm in this city Gibbon & Co. to drop into the central office to order coal

boys who stand on each side of the chutes and pick out the slate.

The continued growth of Messrs Gibbon & Co's. business is due largely to the care which is exercised in the screening and

secured the sheds of Mr. John F. Morrison adjoining and took over his coal business. These premises a partial view of which is given in cut No. 5. Herewith have been equipped with the best modern coal and wood handling outfit in the Maritime Provinces and in many respects equal to the best in Boston.

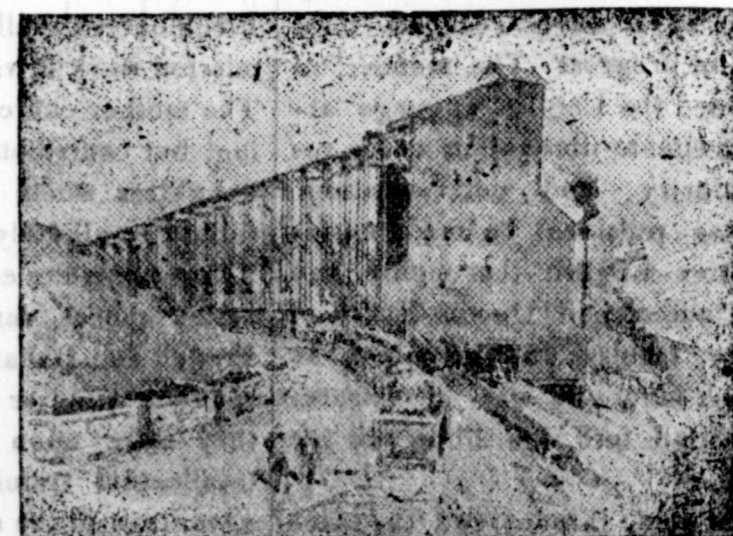
At the end of the wharf, upon the high

the floor. The tubs are hoisted rapidly by the steam shovel engine, and as they go up they strike an attachment in the tower by which they are dumped automatically into the hopper. The coal is conveyed back and deposited in the different sheds on the wharf, by means of an automatic railway, the car carrying about two tons, running swiftly down the track to the shed required, dumping its load and returning to the hopper for another load, without the

three tons, as seen in cut No. 9. With their ton carts, two ton waggons and this new three ton out-fit and their new facility for loading them with a steam shovel in operation Gibbon & Co. will be able to deliver hard coal this summer at a smaller cost for discharging, screening and delivering than has ever been done in St. John before, and their patrons who buy early in the season will be sure to receive the benefit.



No. 2—Hard Coal.



No. 3—"Breaker."