

# The King's Highway.

## An Advocate of Scriptural Holiness

And an Highway shall be there, and a way, and it shall be called The Way of Holiness—Isa. 35-8.

VOL. XXIV.

Fredericton, N. B., May 30, 1913.

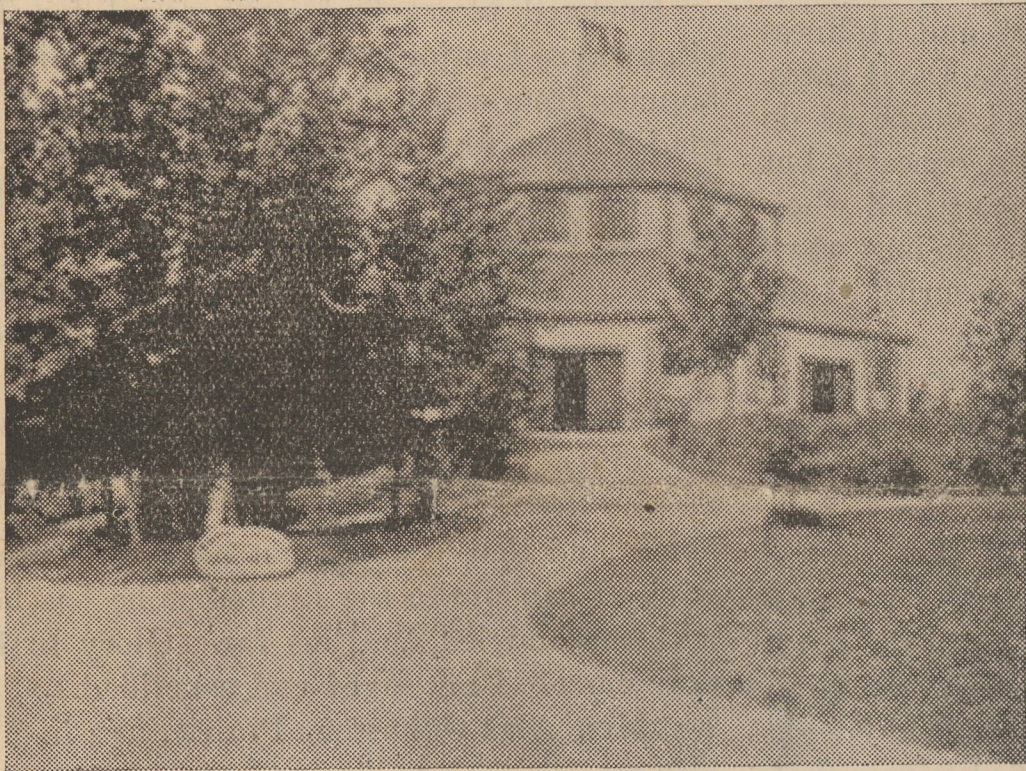
No. 10

# 1893 The Twentieth Anniversary 1913 of Beulah Camp Meeting

WILL BE HELD

## JUNE 29<sup>TH</sup> - JULY 6<sup>TH</sup>

A large company of Ministers and Christian Workers are expected to be present led by  
**REV. A. P. GOUTHEY, Evangelist, of Indianapolis, Indiana**



BEULAH TABERNACLE.

### RAILROADS AND STEAMBOATS

I. C. R.—Purchase one-way First Class Ticket to St. John, obtaining STANDARD CERTIFICATE at the same time, which when signed by the Secretary at Beulah will entitle you to a free return ticket from St. John.

C. P. R.—Purchase a First Class Ticket to St. Marys or St. John, as you wish, obtaining at the same time a STANDARD CERTIFICATE, which when signed by the Secretary will entitle you to be returned at ONE-THIRD First Class Fare.

ST. JOHN RIVER STEAMERS "D. J. Purdy" and "Majestic," of the Crystal Stream S. S. Co.— Pay your fare to Beulah and get a certificate from the Secretary, which will give you a free return on these steamers.

D. A. R.—Purchase one-way First Class Ticket to St. John, obtaining STANDARD CERTIFICATE at the same time, which when signed by the Secretary at Beulah will entitle you to a free return ticket from St. John.

### STEAMERS FROM FREDERICTON.

D. J. Purdy down Tuesday, Thursday, Saturday.  
Victoria down Monday, Wednesday, Friday.  
Fares on both steamers as above.

Come and bring your children.  
Beulah Camp Meeting is practically an interdenominational meeting.

All are welcomed.

The situation of Beulah Camp Ground is ideal. Far enough up river to escape the cold fogs of the Bay of Fundy, and far enough down to escape the heat.

### ACCOMMODATIONS

The largest and best summer hotel on the St. John River. Two large Dormitories, and rooms in cottages.

Rates.—Board per week, \$3.50; per day, 75 cents. Rooms from 40 cents to \$1.00 per day. Good arrangements for those who wish to board themselves.

For rooms, write Revs. P. J. Traf-ton, Hartland, N. B.; Henry Smith, Marysville, N. B., or E. W. Lister, Mill-ville, N. B.



REV. A. P. GOUTHEY.

Beautiful situation, giving a fine view of 10 to 15 miles, the full length of the Long Reach.

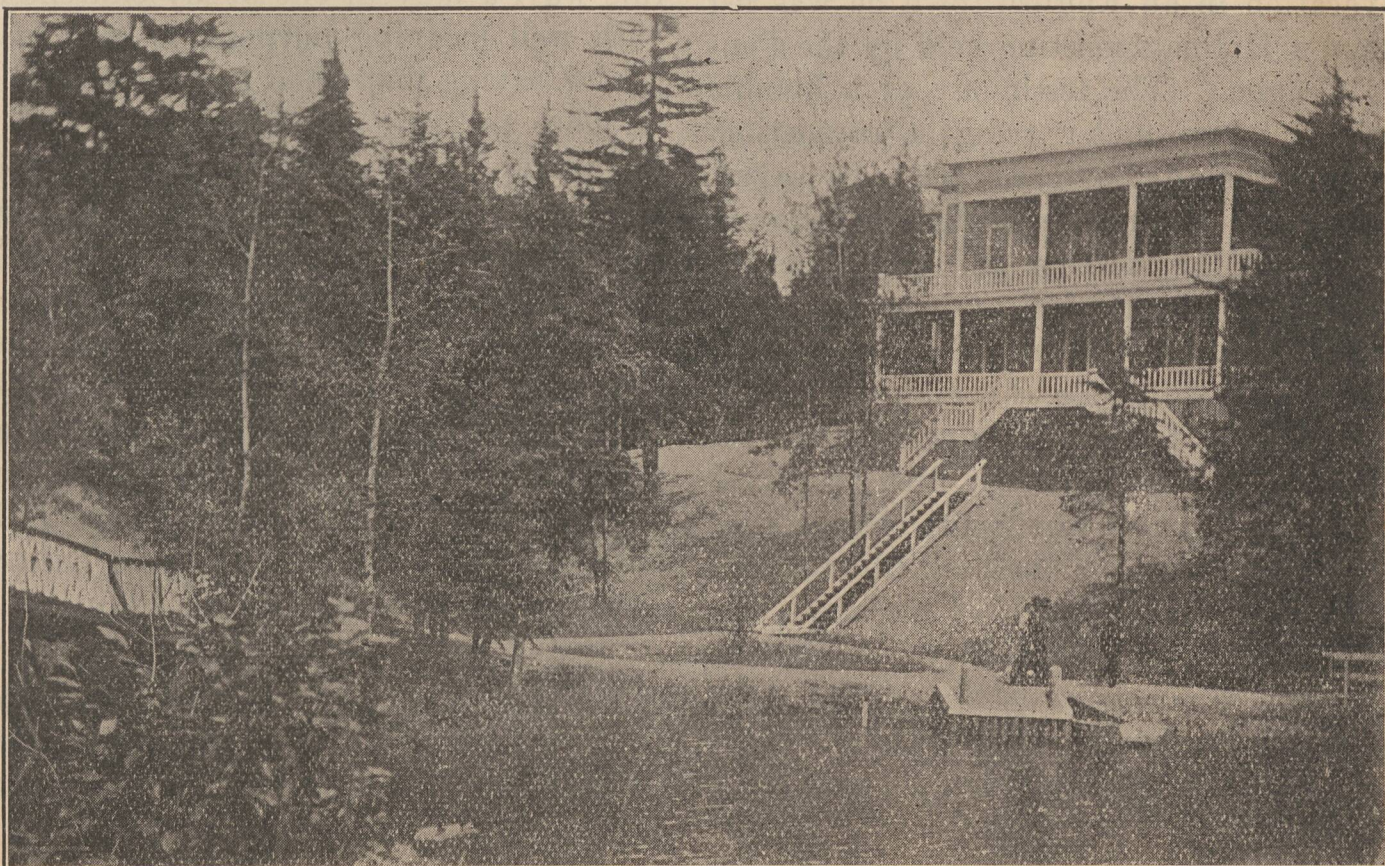
There is no finer place to spend 10 days to those who enjoy Christian association.

"Come aside and rest awhile." The conditions combine for spiritual blessing, health, comfort, recreation. Sanitary conditions excellent. An abundance of beautiful spring water.

Daily mail, and telephone service.

The low rates of travel, and low rates of board and room rent puts the meetings in reach of all.

Pastors and people of all denominations of Christians will be welcomed. The great essentials of salvation, regeneration for the sinner and entire sanctification for the believer, are the themes of Beulah Camp Meetings.



BEULAH CAMP GROUND HOTEL.