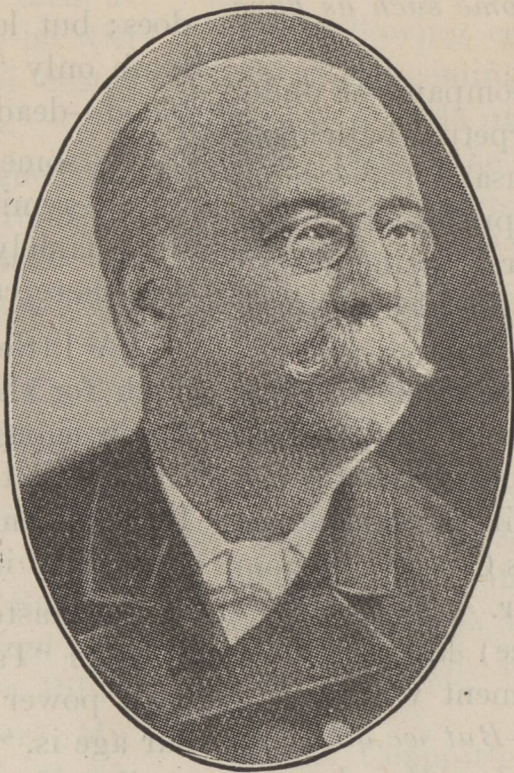


# Views of Beulah Camp Ground and Leading Evangelists who have Preached there



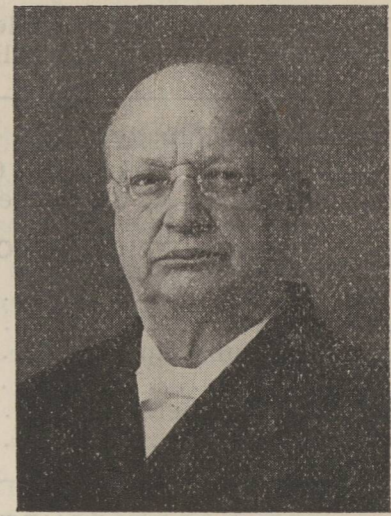
REV. H. C. MORRISON, D. D.,  
Editor of The Pentecostal Herald and  
President of the Asbury College,  
Wilmore, Ky.



REV. C. J. FOWLER, D. D.,  
Editor of The Christian Witness.



REV. C. W. RUTH,  
A Continental Evangelist.



REV. E. F. WALKER, D. D.  
Now in Evangelistic Work in Scotland.

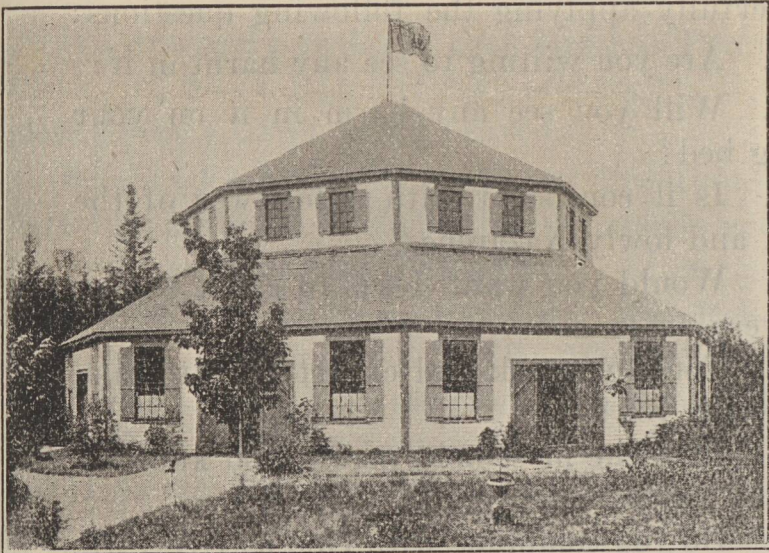
## BEULAH CAMP GROUND.

Beulah Camp Ground is conceded by all who visit it to be the most beautiful and best equipped camp ground on the continent. The natural scenery surrounding it is beautiful beyond description. The climatic conditions are quite perfect; it is situated far enough from the sea to escape the fog, and near enough to the Bay of Fundy to escape the summer heat. It is situated at the head of the "Long Reach," where the beautiful St. John River has a width of

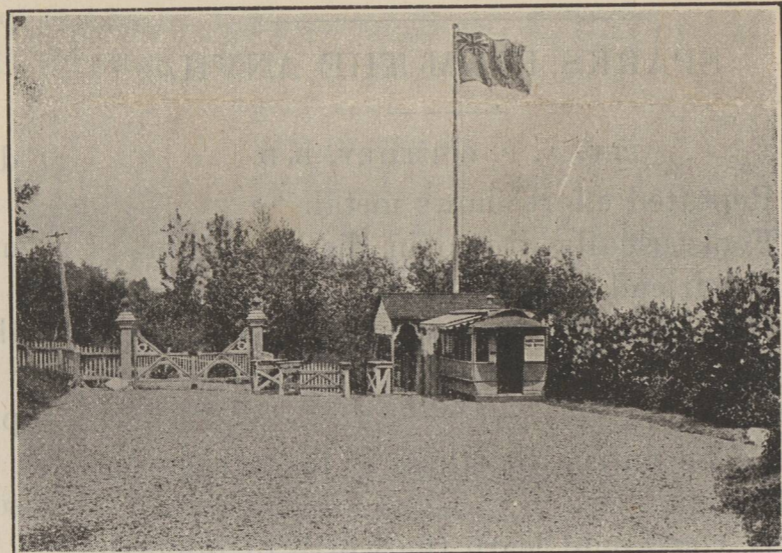
nearly two miles and an uninterrupted view down the river of between 10 and 12 miles. The background is a range of high hills from which can be seen the river and landscape for several miles up the river. Added to this, Beulah Camp Ground itself is a most attractive place, with fine beaches, walks, avenues, groves, fountains, shrubbery and flowers. A large hotel with wide balconies, large airy dining room, large sleeping and sitting rooms. Two large dormitories and many cottages. Daily mail and telephone service; six or eight steamboats touch

at the wharf daily. Furnished rooms from 25 cents to \$1.00 per day. Table board at the hotel, 75 cents per day, or \$3.50 per week. Persons wishing to board themselves have the privilege of doing so, and can buy all their supplies at as reasonable rates as at any other place. The object of the management is not to make money, but to give the people the privilege of attending the services of the camp meeting at the smallest living cost.

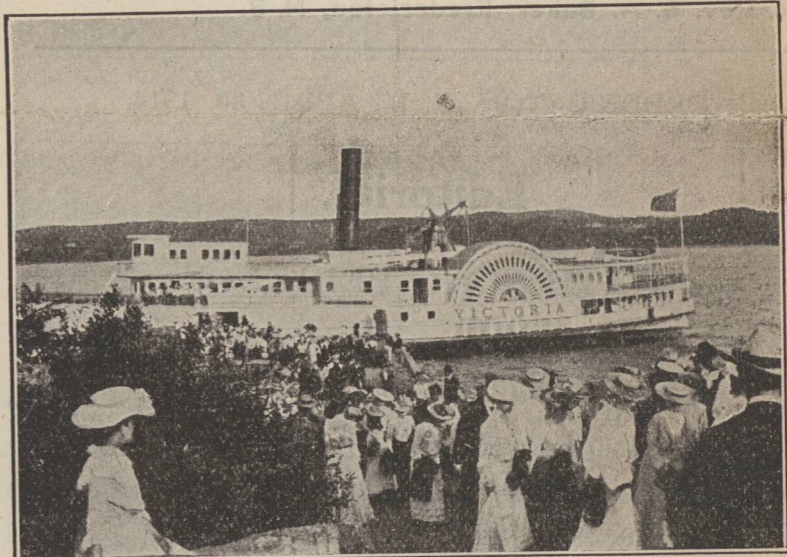
Don't forget the dates—July 3-12. Plan to come and remain during the whole time.



THE TABERNACLE



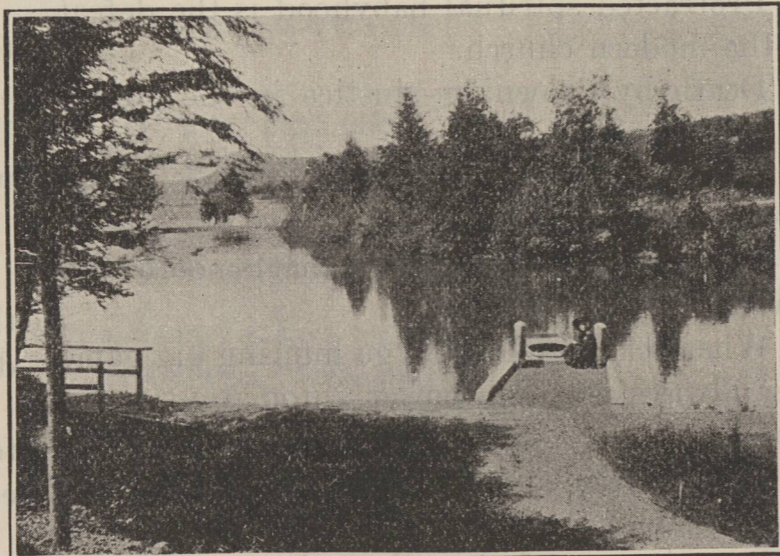
Main Entrance Ticket Office and Book Room.



STEAMER VICTORIA AT THE WHARF



BRIDGE OVER ARTIFICIAL LAKE



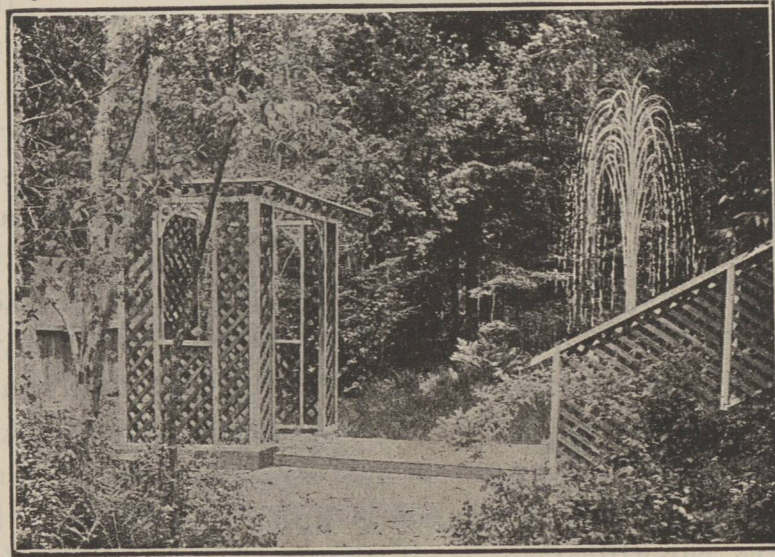
THE LAKE



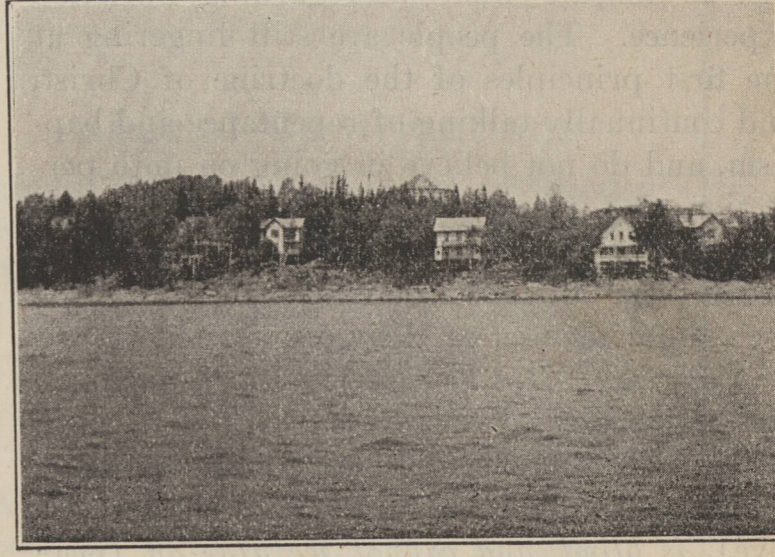
THE NEW HOTEL



KINGHORN AVENUE, FROM COVE



ARBOR AND FOUNTAIN



COTTAGES ON RIVER FRONT

le  
g  
is  
ta  
phat  
atic  
ll  
who  
o  
ac  
er"  
ns  
ner  
erve  
lled.  
A  
o  
othe  
her  
wish  
h  
t  
"mom  
nen  
ok  
ing  
es-  
noke  
it,"  
th  
h  
rou  
ag  
it  
as  
us  
d  
voc  
ca  
oke  
o  
n  
grat  
it  
et  
wi  
it  
kely  
u  
l  
prob  
a  
st  
hin  
st  
hin  
r  
g  
a  
te  
36.50  
he  
h  
d  
as  
r  
is  
ite  
s  
asi  
ad  
a  
cer  
At  
g  
teen  
\$36.  
in  
t  
ac  
l  
for  
O  
e  
sav  
is  
M  
l  
se  
-rs-  
pear  
o  
eote  
se.  
s  
pl  
l  
t  
st  
fi  
h  
k  
a  
i  
g  
ca  
l  
er  
ear  
ca  
sa  
l  
10  
e  
s  
li  
eth  
s  
7  
3.  
d  
27