

RIVERSIDE CAMP MEETING.

ROBINSON, AROOSTOOK COUNTY, MAINE,
AUGUST 7-16, 1914.

For the promotion of Scriptural Holiness. We are expecting this to be the greatest meeting ever held on this camp ground.

Rev. George J. Kunz, Evangelist, of Syracuse, New York, President of the New York State Holiness Association, and over twenty ministers and lay workers, will assist in the services.

TRAVELLING RATES.—From points in New Brunswick purchase return tickets on C. P. R. to Fort Fairfield or Houlton, Me., thence by Bangor and Aroostook R.R. to Riverside Camp Ground. The B. & A. R.R. will sell one-fare round trip tickets from all stations north of Millinocket, Me., to Riverside Camp Ground from Aug. 5th to 16th, good for return Aug. 18th.

BOARD.—\$3.50 per week, 75 cents per day. Dinner, 35 cents; on Sunday 50 cents.

FURNISHED ROOMS, 50 and 75 cents per day.

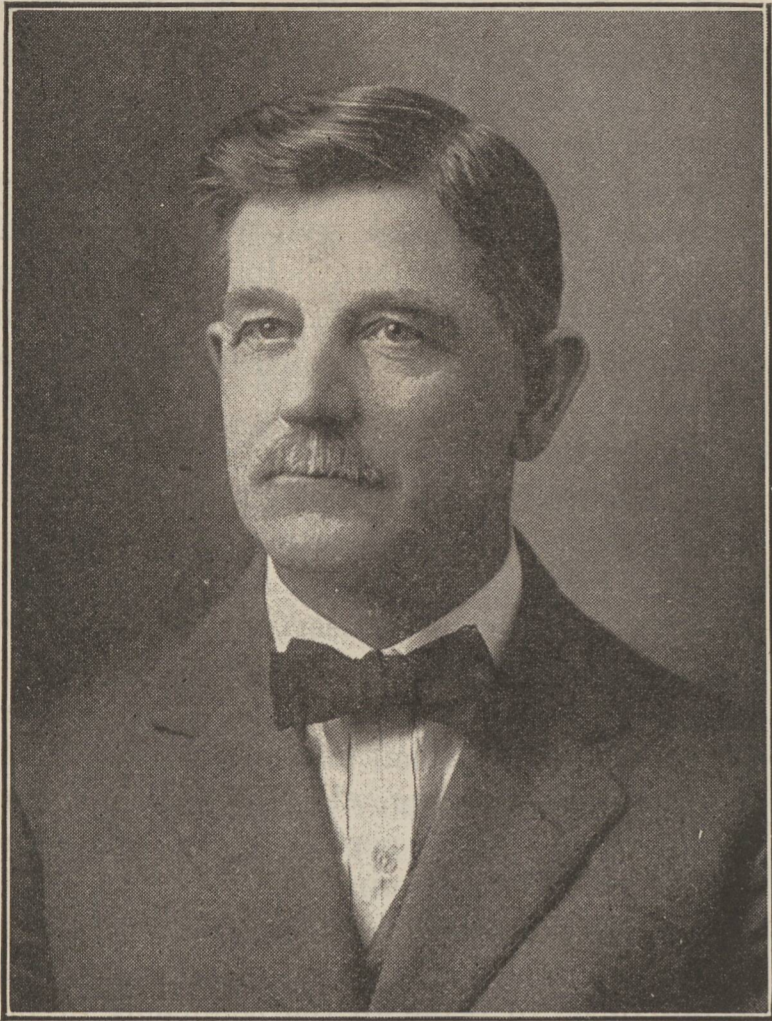
STABLING for 90 horses. Hay for horses; no grain.

Admission to grounds free.

The expenses of the meeting will be met by voluntary contributions.

Come and bring your tents and your whole family and enjoy this season of special spiritual blessing.

Special ground will be reserved for autos.



REV. GEORGE J. KUNZ,

President of the New York State Holiness Association. Evangelist at Riverside Camp Meeting, August 7-16, 1914.

The Riverside Camp Meeting is the great religious event of the year for Carleton, Victoria and Aroostook counties.



RIVERSIDE CAMP GROUND, ROBINSON STATION, ME.

SOME "DONT'S" FOR EVANGELISTS.

We are in a position to know what is said for and against evangelists and evangelism. We hear a good deal. We love the holiness evangelists. There is no more self-sacrificing class of people on earth, and God is richly blessing their labors. We rejoice in their success, and when we hear of faults which hinder their usefulness, we feel hurt ourselves. We publish here some "Don'ts" that are not imaginary, but prompted by actual experience. We know the holiness evangelists have a hard time in some places. We have suffered ourselves. The cause of God in all ages has never really prospered except where the ministry have been practical examples of self-sacrifice. When the ministry have had an easy time, the cause has languished. Like Jesus, His most skilled workmen have given themselves for men—putting their life blood and tears into the great work of reconciling men to God. Let

us avoid whatever will hinder our usefulness. Let us keep the reflector of our lives clean, so that the light will shine brighter. Suffer therefore a word of exhortation from a lover and friend. Surely the humble will do so. We have no message to others. It would do no good.

Don't grumble at your accommodations, food, bed, etc. It may be that those who entertain you are having as hard a time and as much self-denial to keep you as you are having to be kept.

Don't expect to be waited on more than is absolutely necessary. Think of an evangelist asking to have breakfast brought to her while in bed! Fact.

Don't bring your "wife and dear family" into every sermon. People might get too well acquainted if they are introduced at every service.

Don't be constantly telling of the great vic-

tories you had at A and B and C and other towns. People may think you are going to do it all and cease from their efforts in order to see you do it.

Don't think you cannot go to a hard place and that you want to go to the easy places of labor. There are no easy places for the real gospel. It is a battle.

Don't rely on the success of your last meeting and let up on much prayer and travail of spirit for this present meeting.

Don't suppose all other kinds of preparation are a substitute for much and mighty intercessory prayer. Your soul needs to be saturated with much prayer. There is no substitute for it, if you would preach effectively.

Don't let even a suspicion arise that you are more anxious for shekels than for souls. This world is trying to make itself believe that the ministry is only a profession and that the ministry is after the loaves and fishes. It is our business to show them that our great passion is to save lost men.

Don't whine if you have few calls to labor. If God has really called you into the vineyard He will open the doors. If you do not have as many "calls" as formerly, let it be the occasion of fasting and prayer until God shows you the cause. He will, if you seek earnestly to know. Perhaps you are getting quite dry and need to be set afire.

Don't pound the people and lay the blame of your failure upon them until you have with tears and anguish of soul inquired of the Lord if the fault is in you.

Don't try to drive people. A man that can be driven is worth nothing after you get him. Could anyone have driven you into seeking holiness?

"landslide" in every place. Jesus and the apostles had some very hard and apparently fruitless fields.

Don't fail to pray for your brother evangelists. It will help yourself as well as them.—Editorial, *Ch. Witness*.

COMMITTEES APPOINTED BY THE ALLIANCE FOR 1915.

Alliance Executive—S. A. Baker, H. C. Archer, H. S. Dow, P. J. Trafton, W. B. Wiggins.

Grounds and Tabernacle—L. T. Sabine, H. C. Mullen, Robt. Barr, Wm. Beesley, S. H. Bradley, with Bro. J. F. Bullock as adviser.

Hotel—H. S. Dow, S. A. Baker, W. W. Howe.

Rooms—H. Smith, E. W. Lester, S. H. Clarke.

King's Highway—S. A. Baker, Editor; H. C. Archer, P. J. Trafton, B. N. Goodspeed.

Quarterly meetings—S. H. Clarke, G. B. Trafton, E. W. Lester, C. S. Hilyard.

S. School Agent—Sister Ella Slipp.

Camp Meeting Workers—P. J. Trafton, W. B. Wiggins, S. A. Baker.

Social Reform—Mrs. S. A. Baker, Mrs. W. B. Wiggins, Mrs. S. H. Clarke.

Temperance—Mrs. J. E. Jewett, Mrs. H. C. Archer, Mrs. D. H. Nixon.

Sabbath Observance—J. H. Coy, A. H. Trafton, Fred T. Wright.

Riverside Hotel—H. S. Dow, P. J. Trafton, H. C. Mullen, H. H. Cosman, with power to add to their number.

Tabernacle and Grounds—M. S. Blaisdell, C. S. Hilyard, F. T. Kimball, John Manter, Wm. Cogswell.

Are you going to Riverside Camp Meeting?

ble
ng
hat
Mis
tua
ull
ter
im
all
s. o
tw
ex
rou
r t
so
wb
be
grat
t wi
ely t
prob
and
st hin
ayst hin
ou
a a
ar36.50
quhe h
sigd as
, it
gis ite
bc s asic
sard ar
d r. cel
re: At
sahg
ea
wteen
\$36.
in t
st ac
t for
th Ov
I
ere say
se is
ed
ose
ars
ml fea
h
er hot
ed de.
loc e pl
ce re t
s:
is vast
le fi
s a h
it ork
s a f
ty gi
te ca
foamer
h near
ab, car
or is sa
e
onsmoi
d.
rose li
xe th
be, f
ve
hand
d, 18.
nt
H and
6, 27.