

The King's Highway

An Advocate of Scriptural Holiness

And an Highway shall be there, and a way, and it shall be called The Way of Holiness—15-8.

VOL. XXXIV.

MONCTON, N. B., JULY 16, 1923.

NO. 49

RIVERSIDE CAMP MEETING

August 3rd-12th, 1923.

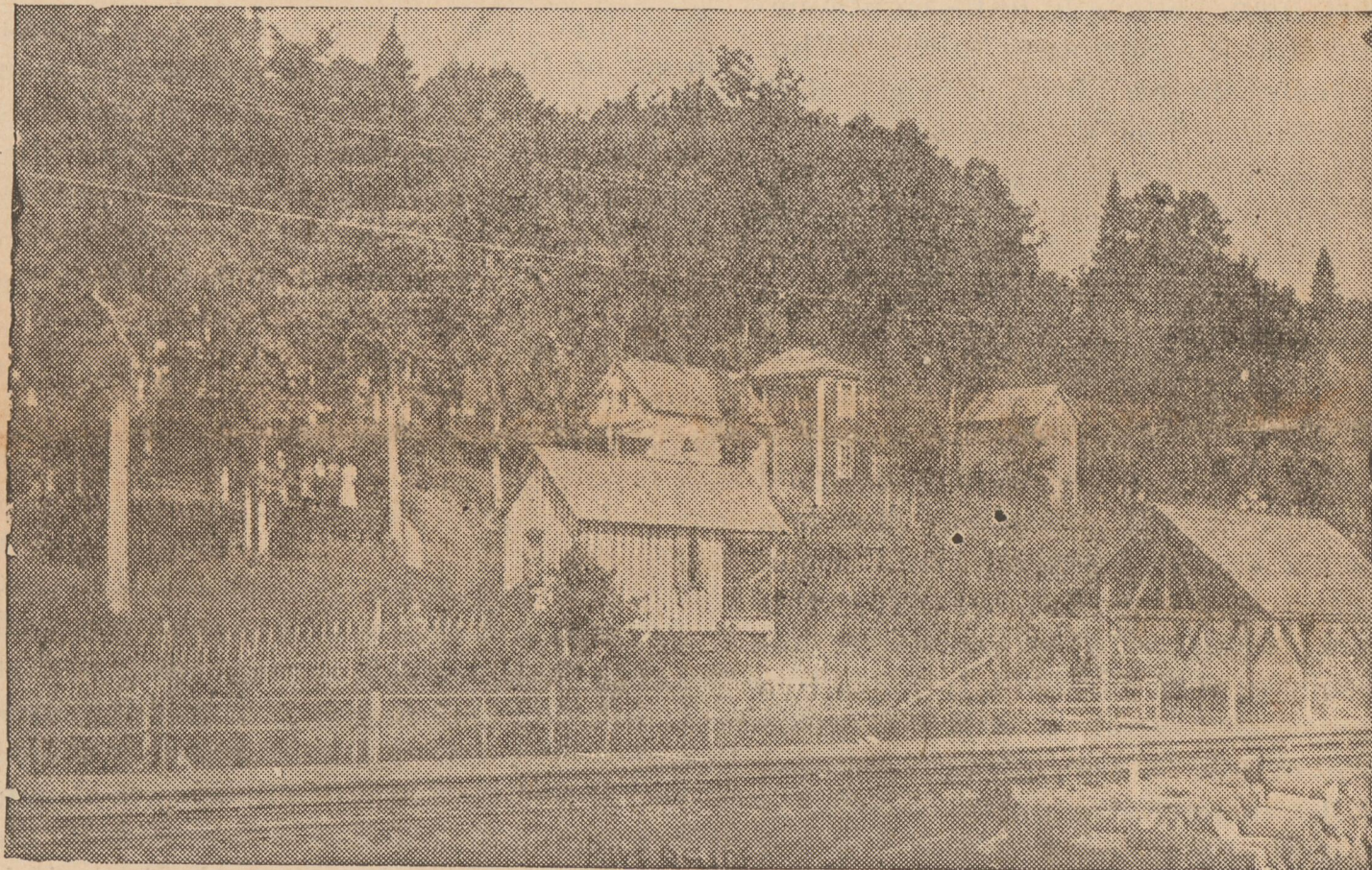


REV. A. L. WHITCOMB, OF UNIVERSITY PARK,
IOWA, EVANGELIST.

Brother Whitcomb was with us at Beulah Camp Meeting last year and did good work and was well liked by all, and many will be glad to meet him again at Riverside, and we feel assured that the people of Aroostook, and Carleton and York and Victoria Counties will be greatly blessed under his ministry. Be sure to come and hear him.

HOW TO GET TO RIVERSIDE.

Take the C. P. R. to Houlton or Fort Fairfield and then by the Bangor and Aroostook R. R. to Robinson Station. Or you can come by the Valley Railway to Centreville, and then by auto to the Camp Ground.



RIVERSIDE CAMP GROUND.

Board \$6.00 per week, \$1.25 per day. Dinner 60c. Breakfast and Supper 40c.

Rooms—Hotel 75 cents per day. Dormitory, 50 cents per day.

To make sure you will have feather pillows and blankets, put them in your suit case before you leave home.

This Camp Ground is situated near Robinson Station on the Bangor and Aroostook Railroad, about two miles from the base of Mars Hill, Me. It is very centrally located, as it is only two miles from Blaine, three miles from Mars Hill Village, five miles from the town of Bridgewater, Me., and near the border line between Maine and New Brunswick. It is also only six miles from Tracy Mills and eight miles from Centreville and two miles from Knoxford villages in N. B. It is very eas-

ily reached both by Railway and autos, of which there are hundreds at times present.

The people of all Christian denominations for thirty or forty miles around look forward to Riverside Camp Meeting as the great religious event of the year, and we believe it stimulates the spiritual activities of all the churches of this whole region of country.

Besides the evangelist, there will be a number of preachers and other workers to assist in the services, together with excellent singers and musicians. We expect that the services at Riverside this year will exceed in numbers and spiritual blessings, all others, previously held here, if the people will make it a matter of earnest prayer. **Be sure to come.**

For Further Information write to **REV. W. B. WIGGINS**, Brown's Flats, Kings Co., N. B.