



Port Maitland
YARMOUTH
Rev. H. S. W.

An Advocate of Scriptural Holiness

VOL. XXXVIII. MONCTON, N. B., JUNE 30TH, 1950 No. 252

THE 1950

RIVERSIDE CAMP MEETING

— at —

ROBINSON, Maine

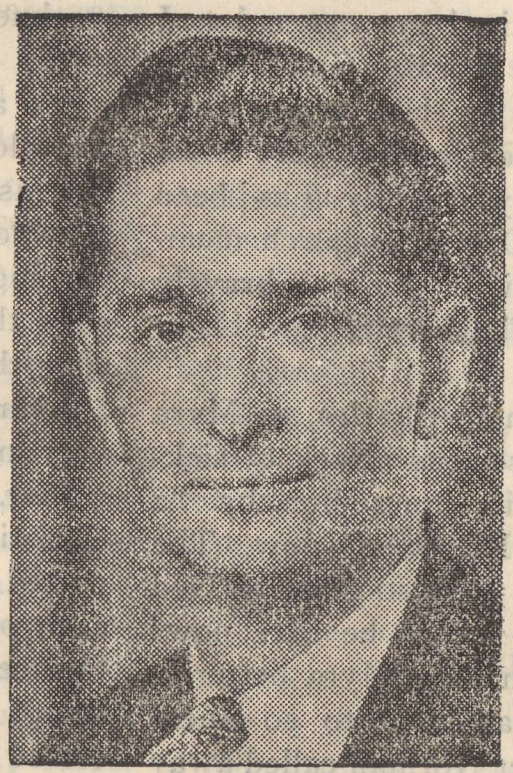
August 11 - 20

EVANGELIST



REV. B. C. COCHRANE

SONG LEADER



DEVERNE MULLEN

LOCATION: Riverside Camp is located in the heart of beautiful Aroostook County on Maine's No. 1 Highway, between Houlton and Presque Isle.

ACCOMMODATIONS: A fine new hotel, erected this year, will provide excellent accommodations for those attending the Camp. Write Rev. H. E. Anderson, Meductic, N. B., for rates and reservations.

SERVICES: Each evening of the week at 7.30, Sundays 10.30 a.m.; 2.30 and 7.00 p.m. special meetings for children and young people. Preaching by the evangelist and other ministers.

MUSIC: Solos, duets, trios, quartettes, choir and congregational singing under the competent leadership of Deverne Mullen.

FOR GOOD SPIRITUAL FELLOWSHIP—COME TO RIVERSIDE!