

# BETHANY FORESEES NEW PROGRESS

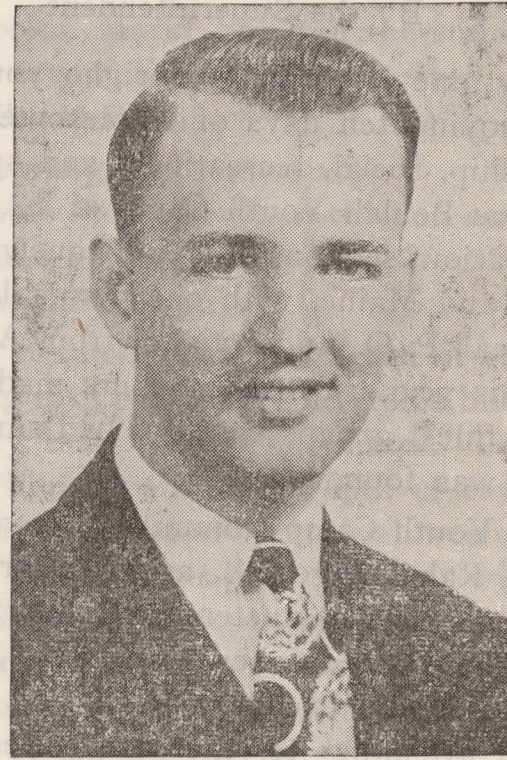
## 1952—1953 FACULTY



**NORMAN TRAFTON, A.B.**  
BIBLE



**LAURENCE MULLEN, A.M., Th.B.**  
BIBLE



**CONARD STAIRS, A.B., Th.B.**  
BIBLE



**WILFRED GREEN, B.A., B.Ed.**  
HIGH SCHOOL



**VESTA MULLEN, A.B.**  
HIGH SCHOOL



**BETTY RUTH STAIRS, B.S.**  
MUSIC

### New Progress

With a strong faculty, improved facilities, and an enthusiastic and supporting constituency, Bethany Bible College foresees a year of fruitful service.

Having a well-trained faculty with recognized degrees, Bethany offers to the youth of its constituency Christian education on a high academic level. In the High School Department teachers holding first class licenses and having college training provide the same quality of teaching which the best of public schools offer and which some public schools cannot give. The Bible-department faculty compares favourably with that of other Bible schools; its instructors, all college graduates, are young and experienced. Two part-time instructors in the Music Department give instruction in piano playing and the theoretical and practical aspects of song leading. Each teacher in all departments has had previous

teaching experience and college training—noteworthy recommendations.

The Alliance of the Reformed Baptist Church has approved a plan for the installation of a new central heating system for the Bible College, which will contribute greatly to comfort and convenience in school life. Financial arrangements are being completed, and it is expected that the actual work of installation will begin soon. Already basic plans have been formulated for the extension of the growing school library. Plans will be announced in forthcoming issues of "The Highway." Notable additions have been made to the laboratory equipment of the High School Department in the last two years; such additions will continue.

Last year, denominational support was the most wholehearted since the founding of the school. Paid budgets reached a new high and the number of contributing churches was almost unanimous. Approximately six hundred

people in our small constituency have pledged a day's pay to Bethany for this coming school year.

Through the school tour and individual communications, contacts have been made with a large number of prospective students. Several have been accepted for enrollment already. In the providences of God the sons of the prophets will soon say, "The place where we dwell with thee is too strait (crowded) for us." (2 Kings 6:1). Then shall we build larger.

As moral conditions in public schools become shockingly worse, Christian parents are pondering on a question somewhat a reversal of the old: "Can we afford not to send our boy or girl to a Christian school?"

Morally speaking, the casualty rate is exceedingly low in schools such as Bethany. "The school does not allow . . . the use of alcoholic liquors and tobacco, card playing, dancing, attendance at theatres, and membership in secret societies."

## REGISTRATION SEPTEMBER 3

Applications should be mailed to the Registrar, C. E. Stairs, Meductic, New Brunswick, before August 20.