

# The King's Highway

An Advocate of Scriptural Holiness

— THE ORGAN OF THE —  
REFORMED BAPTIST ALLIANCE

Published Semi-Monthly at Moncton, N. B.,  
by a Committee of the Alliance.  
Editor - Rev. B. C. Cochrane  
Associate Editor and Business Manager  
Rev. E. W. Tokley

Contributing Editors: Revs. H. S. Dow, F. A. Dunlop  
Other members of Committee: Revs. W. L. Fernley,  
A. D. Cann

— SUBSCRIPTION PRICE —  
Per year, in advance.....\$3.00  
Ministers, per year..... 3.00  
Three months' trial subscription..... .50  
Sample Copy.....Free  
United States Subscribers..... 3.00  
Ministers, U. S. A..... 3.00

**SPECIAL NOTICE**  
All correspondence for The Highway should reach us before the 8th and 23rd of each month.  
The King's Highway, Box 277, Moncton, N. B.  
Printed by Moncton Publishing Co., Ltd.,  
Printers and Publishers, Moncton, N. B.  
AUTHORIZED AS SECOND CLASS MAIL  
POST OFFICE DEPT. OTTAWA

MONCTON, N. B., JANUARY 16TH, 1956

## EDITORIALS

### "BETHANY SUNDAY"

February 12th. has been designated by our Alliance as "Bethany Sunday". This simply means that pastors are requested to make special mention of our Bible School on that day, and pastors and churches are asked to plan for special offerings in support of this phase of our denominational work. Contributions made from the offerings of this special day will be credited to the budgets of the various churches, but it is to be hoped that our giving will not be merely an effort to make payment, in part or full, towards a financial obligation.

Bethany Bible College is dedicated to the important task of providing education and training for young people desiring to prepare for life's service. Preparing prospective ministers and missionaries for service is a major concern of this institution, but all young people who desire to glorify God in life service, whether their work would be classified as sacred or secular, are invited to obtain High School and Bible School training at Bethany.

It is extremely difficult for young people to gain a thorough education today. The opportunities for intellectual development were never better and there is no scarcity of institutions well qualified to instruct those who are ambitious to develop their mental powers. And in association with many of these educational centres, plenty of provision is made for physical education, expensive gymnasiums, elaborate swimming pools, spacious playing fields, etc., allowing for a wide variety of sports activity aimed at the development of physical strength, skill, and agility.

The tragic weakness of modern educational systems and institutions is in the realm of the spiritual. Set over against an extensive and expensive programme designed to develop body and mind, many modern college and universities have little or no provision for spiritual instruction and development. As a consequence, we have a generation of men who are well advanced in physical and intellectual progress who are dwarfed and moronic in spiritual understanding and outlook. Not only is there a positive lack of good spiritual instruction and influence, but the classroom often reeks with atheism and skepticism and the social programme of the institution is a threat to the

moral welfare of the students.

Bethany Bible College has the major emphasis where it should be—on the spiritual life and development of its students. A well trained, consecrated faculty seeks with all diligence to give careful, thorough classroom instruction, and splendid work is being done in this area. Although facilities for physical education are limited, the need in this field is not overlooked or neglected, and Bethany students have reasonable opportunity for activity in this direction. We do not have the staff, facilities, or buildings to provide all we would like to for the training of body and mind, and every effort possible to improve will be made, but we are seeking to make and keep Bethany strong at a vital point—the spiritual.

Every student who enrolls at Bethany without a present, personal knowledge of Christ, becomes an object of prayerful concern. Members of the faculty and Christian students will be united in earnest effort to lead such young people to the Lord. Those who know the Lord will be encouraged and instructed "in the way of God more perfectly". It is a soul-thrilling experience to learn of the spiritual transformations which take place at Bethany and it is an inspiration to watch the process of spiritual growth enjoyed by the students who attend the school for High School or Bible School training.

Bethany Sunday is an important day of our Church Calendar for Bethany is a very important phase of our denominational work. Let the name Bethany sound in every church on Feb. 12th. and may the practical expression of our interest in this worthy project be a generous offering from every church that needed financial resources be supplied for the continuance and extension of our Bible School's vital ministry.

### THE HIGHWAY FACES A FINANCIAL CRISIS!

The publishers of our King's Highway have notified us of another big increase in the charge for printing and mailing the paper. This last increase, one of several made during the past few years, is almost 35%, a very high rate of increase as our readers will understand. For the past ten years we have been faced with financial problems relative to publication of our Highway. So serious was the situation last summer, that our committee recommended increasing the subscription to \$3.00 per year. This seemed a very high rate for a paper published semi-monthly, and it is, but recent increases, those made even since last Alliance time, mean that we cannot finance the publication of the paper even at this high rate of subscription. Here is the picture: If every subscriber on our mailing list paid the \$3.00 subscription in full and on time, we would still lack what we need to finance publication of the paper, since this last increase has been laid upon us.

What can we do? For the present we can co-operatively meet the challenge as follows: (1) Pay your renewal NOW. Our business manager informs me that there are several hundred subscribers in arrears. It would greatly ease the pressure and renew our hopes if these people would immediately send in amounts due on their subscriptions.

(2) Offerings could be taken or sent in from the churches and a voluntary expression of interest on the part of our churches. These donations would be acknowledged in the Highway under a Supplementary Fund column. Our

churches are giving to many projects, and giving generously, and we regret that we must present this appeal, but we feel confident that our people want to keep the Highway in circulation, if possible. So, let pastors and people who are interested endeavour to make a special contribution that we may meet the present emergency.

(3) Prayer will help us more than anything else. God is able to carry us through this crisis period, but we do need prayer. As you read these lines will you lift your heart to the Lord asking that He work out His will in this matter?

## The Lord's Supper

F. A. Dunlop

The apostle Paul discovered some gracious advantages in the New Economy of Grace over the Old Jewish Systems of Worship. He makes much of the liberties found in the New.

Living in the transitional period from Law to Grace, and having a thorough knowledge of the Old order he laboured with great zeal to protect new converts and new churches from the unprofitable exercises of the ceremonial Laws. Being fully enlightened concerning the perfect atonement of Christ he would suffer no substitutes such as circumcision, animal sacrifices or priestcraft. Words such as: "freedom", "liberty", "redemption", "loosed", were meaningful words to the apostle Paul. The "yoke of bondage" had left its scars upon his spirit and wrung from him the bitter cry, "O wretched man that I am! Who shall deliver me from the body of this death?" Hence, his anxious plea: "O foolish Galatians, who hath bewitched you, that ye should not obey the truth . . . Are ye so foolish? Having begun in the Spirit are ye now made perfect by the flesh?"

I suggest to you that it is quite impossible for us, so far removed from those priestly orders, to appreciate the burdens attached to the Temple worship. I have been reading again the records contained in the Books of Exodus and Leviticus. There we have Temple worship described in detail and the demands upon the people were costly, exacting and difficult. The continuous shedding of blood, and the constant dying of the animals must have left the worshipper in a state of mental distraction. Now, had this effected a happy and immediate fellowship with God, well and good, but the intervening veil was a solemn reminder that the worshipper was yet unfit for the joys of communion.

The Communion Service speaks to us of cancelled obligations. The Altar, most holy; the Blood, that "speaketh better things"; the High Priest, in His "unchanging priesthood", are there. The worshipper by faith can touch the Altar that maketh holy, can rest under the Blood of the New Covenant, can pass beyond the veil into the very presence of God. All this, with the blessed assurance that what the "righteousness of the law could not do", Christ by His perfect atonement hath done. "Christ hath become the end of the law of righteousness to everyone that believeth."

Freedom from the "curse of the Law", freedom from the power and principle of sin, and freedom to worship God with an "unveiled face", are the freedoms that Paul boasted in through the Gospel of the Son of God. With such a faith may we approach the Lord's Table.

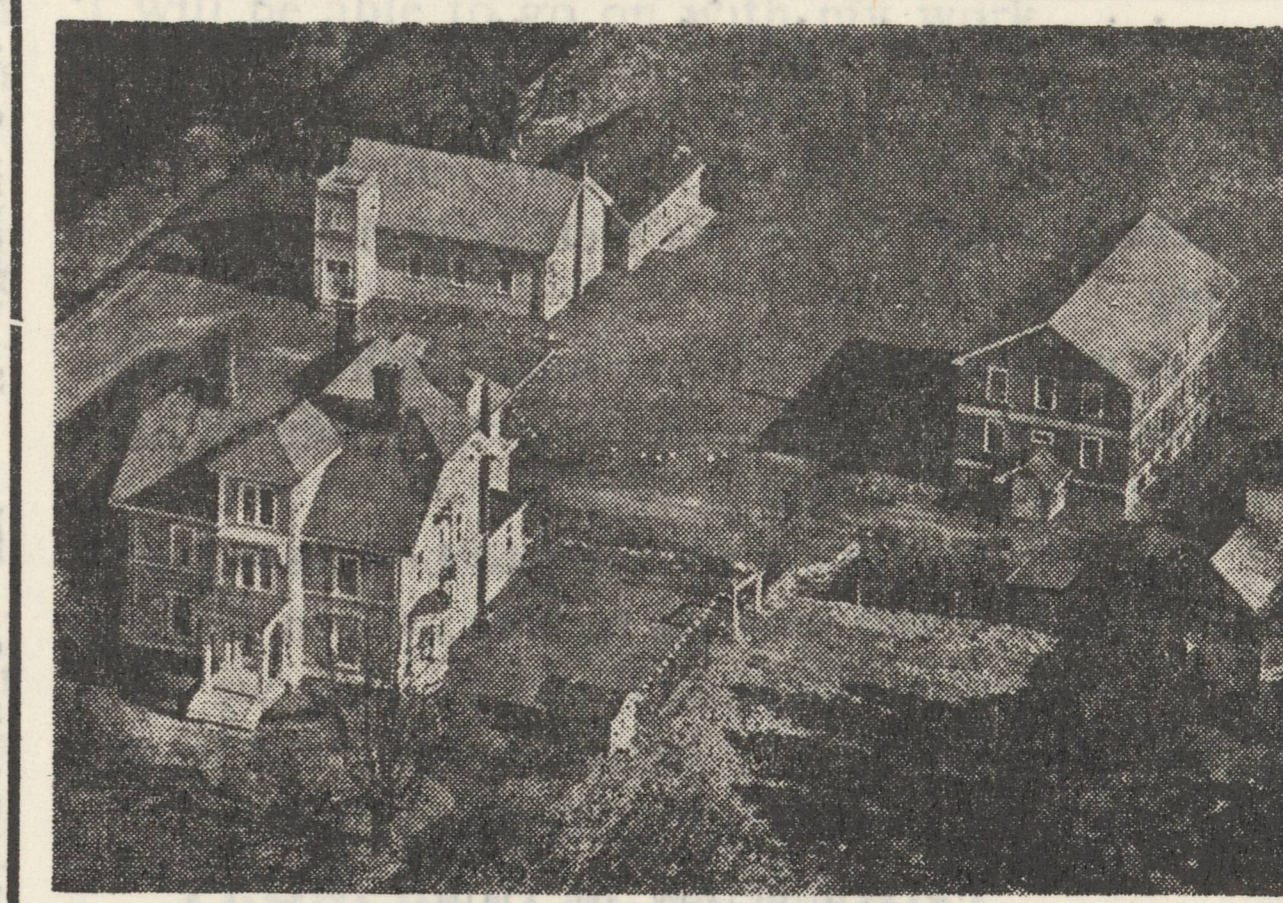
# Bethany Bible College

## BETHANY AND THE CHURCH

For many years keen minds of our denomination felt the need of a Christian college to instruct our youth. In 1945 the desire of our denomination was realized when the Reformed Baptist Alliance of Canada founded a Holiness college in the Maritimes. Today the name "Bethany" is familiar to each of us. It means much to us as individuals and it means more in the realm of service to our Church. Bethany is the life blood of our church. Our churches brought her into being, nourished her, and even today Bethany draws resources from her parents — The churches, Let us not think for a moment that Bethany receives benefits from our churches without giving something in return. The contribution of Bethany to our churches is enormous. Have you considered the fact that thirty four percent of the active pastors in our denomination are Bethany graduates? This fact is even more significant when we consider that this holiness college has been operating only ten years. These qualified pastors are among the best that our church has. Their sacrificial life of love and toil speaks well of the training they received at Bethany. During the past ten years students have come to Bethany to receive their basic High School training in a Christian environment. How blessed the thought that these graduates from Bethany and return to our churches to take up responsible places of service as laymen and laywomen. Their contribution to the church is invaluable. Many of our Bethany graduates hold responsible positions in the business world. Their former training enables them to be more effective in their work and in making a contribution to the church through the offices they hold. More and more our churches are drawing on the students of Bethany for special activities such as: Sunday School workers, Young People workers, D.V.B.S. workers, to mention a few. Is it any wonder we consider that Bethany is the life blood of our church? What the future holds for the church will depend upon what the church does for Bethany. By serving Bethany the church serves itself; and strengthens the force we have in spreading scriptural holiness.

## BETHANY and HOME MISSIONS

During recent years, there has been an increased effort by our Home Mission Board to enlarge our borders by establishing new churches throughout the Maritimes and Maine. How difficult this task would be without a source of new workers to draw from. Many Bethany students have been active in Home Mission campaigns, and today some of our Home Mission churches are pastored by Bethany graduates. It is a significant fact that during the past ten years Bethany has prepared more pastors than we have established new churches. This is as it should be, because Home Mission work is connected with our main church program. Our church is dependent upon Bethany for men to fill her pulpits. Without the contribution Bethany has made, and will make in the future, by supplying men for the pulpit; and consecrated laymen for the pew, our Home Mission effort will be restricted. Thus we conclude that any contribution to Bethany Bible College is a boost to our Home Mission Program.



## BETHANY and EVANGELISM

Evangelism is a broad term which includes the activities of the Church to spread the Gospel of Jesus Christ. It pleased the Lord to use us human beings to do this magnificent task. What an asset our college is to our denomination in the general program of evangelism. Bethany has supplied preachers, pastors, evangelists, Sunday School workers, D.V.B.S. workers, song evangelists, school principals and consecrated laymen who are to be desired in any evangelical body in giving the Gospel of Christ. Bethany's contribution is not confined to our own denomination. She has trained men and women of various denominations and others who are labouring with other evangelical bodies. Indeed, Bethany's influence extends to several countries of the world. But her greatest influence is to be felt in those fields where her trained men and women labour as they are directed by God into fields of service in our work. One synoptic view of this page gives one the picture of our denomination. Bethany is the centre of its influence. Local churches, the Home Mission program, the Foreign Missionary enterprise, are all associated with the ministry of evangelism. Bethany is the key to our responsibility. With the blessing of God and harmonious cooperation of our churches, we shall not labour in vain.

## BETHANY and FOREIGN MISSIONS

Foreign Missions seems to be dear to the heart of all believers. This is proper, for Jesus emphasized missions emphatically during His earthly ministry. History has proven that the church which is predominately missionary minded is a prosperous church. Our plea is for greater support of our Foreign Missionary program. One of the greatest ways to support our Foreign Missionary work is to support Bethany. Bethany is the avenue through which our church channels its missionaries for preparation for service in the field. Today, after ten years of service, fifty percent of our active missionaries in South Africa are former students or teachers of Bethany. Even more significant is the fact that one of our Bethany graduates is the principal of our Holiness Bible School in South Africa. At the present time eighty percent of our missionaries waiting to be sent to the field are former students of Bethany. Our missionaries are enthused about Bethany because of her value in our missionary program. Certainly Bethany is that heart of our Foreign Missionary enterprise.

★ ★ PLAN PRAY PAY ★ ★  
For  
**BETHANY** FEBRUARY 12th **SUNDAY**

LET'S HAVE A RECORD CONTRIBUTION FROM ALL OUR CHURCHES. WHEN YOU SUPPORT BETHANY YOU SUPPORT EVERY PHASE OF OUR DENOMINATIONAL WORK.