

"Facts and Figures" prove conclusively
that "Salada" Teas are the leading and best
selling before the world to day.

"SALADA"

Black—Green or Mixed—Sealed Packets only.

FREE samples cheerfully mailed on enquiry.
Address "Salada" Montreal. E64

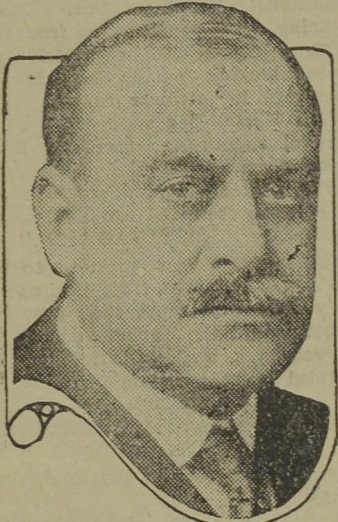
WORDS THAT SPEAK

Bang—"a sudden noise like that from a gun" is the definition given by the dictionary. But the explanation is befogging and futile, for a "bang" is—well, what better describes it than that simple word itself?

So many of our most expressive words seem similarly to have sprung from a desire to form with the lips a sound mimicking the thing described. Why waste words on a definition of the word "splash," for example? You hear all the abrupt, restless heaving of the waters in that one word.

And does even a baby need to be told what "buzz" means when a blue-bottle is leading a forlorn hope against the pantry window? "Tinkle," "whistle," "whine," "gurgle," "cackle," "hey"—these are only a few of our other eloquently descriptive words.

It is also extremely interesting to note the sharp distinction drawn between the words of opposite meaning so as to emphasize their difference in sound—thus, "brisk, lazy" (or "sluggish"); "hot, icy"; "down, up"; "jolly, miserable"; and so on.

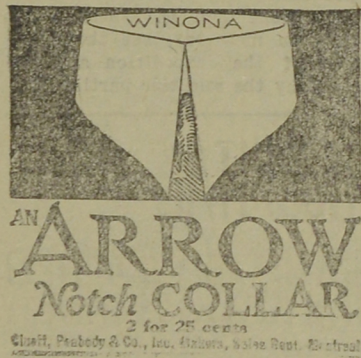


THOMAS M. SCHUMACHER

who was elected chairman of the board of directors of the big Rock Island system after 34 years of railroad experience. He began as a telegraph operator.

Criminology and Feet

Dr. Charles Perrier, police surgeon at Nimes, France, concludes from experiments lasting ten years that thieves and incendiaries have the longest feet; cutters come next; those being followed in regular order of succession by dynamitards, tramps, swindlers, and poisoners.



AN ARROW NOTCH COLLAR

Cliff, Presley & Co., Inc., 1120 St. John St., Montreal

SAFEGUARDING HUMAN LIFE

Here are some "Safety First" maxims given out by Mr. N. S. Dunlop to a meeting of railway men at an address in Montreal:

"Don't throw anything out of a moving train. It's a bad thing to get a mail bag in the stomach from an express running thirty miles an hour."

"A brakeman should not sit down on the track and be run over by the train he went to flag."

"It takes less time to prevent an accident than it does to fill up Form 74 (the accident report form)."

"Don't fool with machines. They can be replaced. Hands cannot."

"You can start a 'Safety First' committee right in your own home."

"Get the 'Safety First' Habit."

"Stop supporting the undertaker and the artificial limb maker."

"No man should go twenty-four hours without placing his insurance."

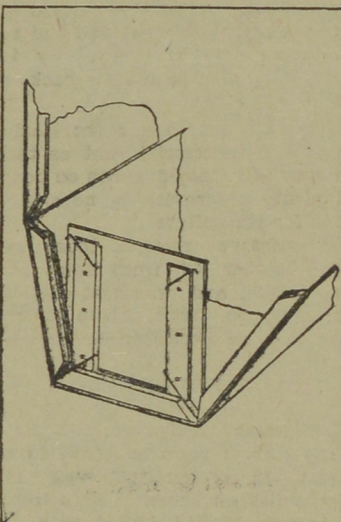
Mr. Dunlop is an enthusiast for "Safety First," a movement which was started on the C.P.R. so long ago as 1885.

As a Claims Adjuster Mr. Dunlop has had to deal with many sad experiences due to neglect of "Safety First" principles.

KNOCKDOWN SHIPPING BOX

Six Pieces Quickly Formed Into a Strong Close Case

An ingenious form of shipping box is shown here. It is in knockdown style and not only makes a strong case, with close-fitting joints, but can be used over and over again. There are four side pieces and two end pieces. Each side piece has grooved cleats on each end and the end pieces



CAN BE USED MANY TIMES.

fit between the side cleats. Two cleats secured to each end piece have flanges that engage the grooves of the adjacent cleats on the sides. These various pieces register so neatly that merchandise of small particles can be carried in the box without filtering through. Wires hold the box shut and when it has been emptied it can be taken apart and shipped back flat if the consignor wants it.

Pays Women's Passage

In order to attract domestic servants the New Zealand government pays the whole of women's passage money if the immigrants are unable to pay the prescribed portion of the fare. The money so advanced is refunded by instalments.

CATARRH OR COLDS NEVER QUICKLY CURED BY SWALLOWING DRUGS

Cough Syrup, Tablets, etc., go to the Stomach, Perhaps Sicken It, But Don't Kill the Germs of Catarrh

THE DIRECT BREATHING CURE IS BEST

To cure an ailment in the throat, or chest, to rout out Catarrh or Asthma, it is essential that the medicine be conveyed direct to the affected parts. This is why no other remedy has achieved such world-wide success as Catarrhzone, which alone can be breathed in one second to every air cell in the breathing organs. The healing vapors of Catarrhzone mix with the breath and descend through the throat, down the bronchial tubes, to the deepest air cells in the lungs—all parts are saturated with the rich piney essences that ease, heal and cure.

"No one ever contracted a more obstinate attack of nasal catarrh than I suffered a month ago," writes Mrs. G. E. Root, a well-known resident of Bridgetown, W.I. "My head ached terribly, I sneezed about every three minutes but still my nostrils were entirely closed and I could not breathe through them. Ten minutes inhaling Catarrhzone gave me a little relief, so I continued to use Catarrhzone every hour and before the day was out I had improved. Catarrhzone quickly cured me."

There is no remedy so certain and safe as Catarrhzone, but being a good remedy it is imitated. Beware of the substitutor. Large Catarrhzone lasts two months, price \$1.00; smaller sizes 25c. and 50c. At all storekeepers and druggists, or The Catarrhzone Co., Buffalo, N.Y., and Kingston, Canada.

where no Money is Used

The Island of Ascension, in the Atlantic Ocean, is of volcanic formation, and has a population of only 450. It was uninhabited until the confinement of Napoleon at St. Helena, when it was occupied by a small British force.

Ascension is governed by a captain appointed by the British Admiralty. There is no private property in land, no rents, no taxes, and no use for money. The flocks and herds are public property and the meat is issued as rations. So are the vegetables grown on the farms. When an island fisherman makes a catch he brings it to the guard-room, where it is issued by the sergeant-major. Practically the entire population are sailors and they work at most of the common trades. The multerer is a Jack Tar; so is the gardener; so are the shepherds, the stockmen, the grocers, masons, carpenters and plumbers. The climate is almost perfect and anything can be grown.



THIS is a HOME DYE that ANYONE can use.

DY-O-LA
The Guaranteed "ONE DYE" for All Kinds of Cloth.
Clean, Simple, No Chance of Mistake. TRY IT!
Send for Free Color Card and Booklet.
The Johnson-Richardson Co., Limited, - Montreal

GUARDING AGAINST EVIL EYE



Syrian child wearing charms to ward off evil.

That the evil eye may be visited upon their children is the especial fear of Palestine and Syrian mothers, and many "charms" are hung upon the little ones to ward it off. The more of these amulets a child has, the better mother it is considered to have! Two beads on the neck are supposed to be particularly effective. The rest serve as ornaments as well, and accord their small owners very much pleasure. They form the most important part of their costume.

DIAMONDS IN SAND DUNES

Laborers Search For Precious Gems on Their Hands and Knees

The greater part of the diamonds of Damaraland, South Africa, are said to be found in the narrow valleys between the moving sand dunes on a granite surface with its carpet of three or four inches of sand. In these flat places negro laborers, in bands from 10 to 50, with an overseer to every 10 or 12 men, crawl on their hands and knees over the sand in search of the gems, each one carrying a bottle, in which they are dropped when found.

It is claimed that in one spot 20 negro laborers, working under two white overseers, picked up 60,000 karats of diamonds, valued at more than \$20,000,000 in three days, and at a point about ten miles from Luderitzbucht two white men gathered over 8,000 karats, worth \$300,000, in one afternoon.

One feature of diamond hunting in Damaraland that seems almost uncanny, lies in the circumstance that the same thoroughly searched area may be gone over again a few months afterward with an almost equally successful result as on the first inspection, proving that these gems are shifting.

The coast of Damaraland is like no other part of the world. For 500 miles the giant sand dunes, pushed unceasingly by the winds from the southwest, are piling up at the water's edge to the height of hundreds of feet, during the periods that the tide is out, to be undermined and overthrown when the sea returns. Some of the largest of these dunes have been shown to move as much as nine feet in 24 hours.

MAKING TEA CHESTS

Canadian Poplar is a Suitable Wood For This Purpose

One of the largest London firms in the box shuck trade who, among other connections, do a big business in India and Ceylon with users of tea chests, said that Canadian poplar is well suited for this purpose. While veneer chests are preferable where a long transportation is necessary, many of the growers possessing easier shipping facilities use ordinary boxes manufactured largely from Baltic woods, but owing to the pervading smell of the Swedish fir and the occasional presence of gum, this variety of timber is far from suitable for the purpose. For this reason it is thought that poplar wood free from such disadvantages, is in many respects an ideal material for the construction of tea chests.

A Fortune in a Coin

Among the coins Napoleon had minted were some millions of five-franc pieces, and he determined to popularize these in an extraordinary way. In one of the coins, folded to a tiny size, was enclosed a note signed by Napoleon, and promising the sum of 5,000,000 francs—\$1,000,000—to the finder of that particular coin.

Naturally, everybody who changed a large piece demanded the new five-franc coins in exchange, and as a rule probed and dug and sounded the metal in eager search for the hidden note. But the years went on, and yet the note did not appear. Napoleon's plighted word is a sacred trust to the French nation, and the Government stands ready to pay the debt, which, with interest, is worth \$7,375,000—upon demand.

CLASSIFIED

When Answering Advertisements, Mention "The Daily Mail"

Wanted

WANTED—Boys and girls to sell novelties just honest and ambitious who wish to earn from \$8.00 to \$12.00 per week. Write O. D. Ferdinand Co., 738 Norwood Blvd. Edmonton, Alta. 531-d 3 mos.

MALE—Earn \$15 weekly for few ours work mailing circulars for large Mail Order House. Supplies unrisht free. Men wanted everywhere.

NATIONAL SUPPLY CO., Windsor, Ont.

NOTICE

On and after Monday, December the First, the Dairy Business known as the West End Dairy will be conducted from the farm at Lower St. Marys instead of from the Queen street store as formerly. The telephone number is 383-11 and orders for milk or cream will receive prompt attention.

Property for Sale

The subscriber offers for sale the two storey brick building on Queen street, opposite the Queen Hotel and now occupied by the Fredericton and Grand Lake Railway Company. It is well adapted for offices, containing four well lighted rooms, two vaults, lavatory, etc. The lot is freehold and the building is in good repair. For particulars apply to,

W. T. WHITEHEAD,

Fredericton, Sept. 29, 1913 356-2 weeks.

TENDERS for Rent of Opera House

Tenders will be received by the undersigned up to 8 p. m. on Saturday, Nov. 22nd, 1913, from parties wishing to rent the new concrete Opera House building at Campbellton, N. B., which will be ready for occupancy about Dec. 1st, next. The building which is first-class in every particular is estimated to seat over 500. Parties tendering will be required to put in first-class opera chairs and the fixings in connection with a moving picture business.

The highest or any tender not necessarily accepted.

L. T. JOUDRY,

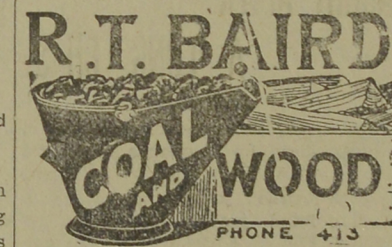
Any information regarding same may be obtained by writing the architect,

PETER H. BLYTHE,

Campbellton, N. B., Nov. 13th, 1913

WEDDING STATIONERY.

We have a fine stock of wedding stationery on hand and are prepared to execute all orders promptly. Send in your orders for invitations or announcements.



PHONE 413

WASHINGTON'S CAFE

YORK STREET

OUR 35 cent DINNERS are Unexcelled in the City.

BUCTOUCHE and P.E.I. OYSTERS Always on Hand.

McCLUSKEY can give you

New Buckwheat, Maple Honey, Fresh Sausages, Flat Bacon, Fin Haddies, Kippers, Salt Salmon, Salt Shad, Salt Mackerel, Salt Herring, Salt Cod.

PHONE 365-11.

Kumfort Over Shoes

Rubbers and Over-Stockings All in One.

Easy to put on and take off. Fit well. Look well—Wear well. All sizes for women and children.

Buy them and protect yourself and family from winter ills.

Canadian Consolidated Rubber Co. Limited, Montreal.

All Dealers

The International Railway

Uniting Campbellton at the head of navigation on Bay Chaleur with the St. John River Valley at St. Leonard's and connecting the International and Canadian Pacific Railway systems.

Summer Time Table Summary Commencing Monday, June 9

GOING WEST

Express trains leaves Campbellton daily (except Sunday) at 8.00 a. m. for St. Leonard's and intermediate stations, due at St. Leonard's at 12.30 p. m.

GOING EAST

Express train leaves St. Leonard's daily (except Sunday) at 4.45 p. m. after arrival of C. P. R. express from St. John, Vancorbo, etc., due at Campbellton at 9.15 p. m.

And in addition to above and to the ordinary freight trains, there is also a regular ACCOMMODATION TRAIN carrying passengers and freight, running each way on alternate days as follows, viz.: Going West—Leaves Campbellton at 8.30 a. m. for St. Leonard's and intermediate stations, Monday, Wednesday and Friday, due at St. Leonard's at 4.10 p. m.

Going East—Leaving St. Leonard's at 8.00 a. m. for Campbellton, etc., Tuesday, Thursday and Saturday, due at Campbellton at 4.15 p. m.

Governed by Atlantic standard Time. See local time tables and for full information regarding connections, etc., apply to R. Humphrey, freight and passenger agent, 55 Canterbury Street, St. John.

E. H. ANDERSON, Manager.
A. A. ANDREW, Traffic Mgr.
THOMAS MALCOLM, Gen. Mgr.
Campbellton, N. B.

CANADIAN PACIFIC

"GOING TOURIST"

Is a popular way to travel.

Tourist Sleepers—light and airy with big comfortable berths, accommodating two adults, if desired—are carried from Montreal on Fast Transcontinental Express Trains for points in Western Canada, British Columbia, and on the Pacific Coast.

Not as luxurious as the Palace Sleeper, but they meet the requirements of a superior class of patrons just as well and at half the cost.

Economy and Comfort Combined

W.B. HOWARD, D.P.A., C.P.R.
ST. JOHN, N. B.

FIRE, LIFE AND ACCIDENT

INSURANCE

ALL FIRST CLASS COMPANIES

M. BREWER

LOWEST POSSIBLE RATES

CLAIMS PROMPTLY PAID

OFFICE NEXT ABOVE GIBSON'S GROCERY, QUEEN STREET.

YORK HOTEL

UNDER NEW MANAGEMENT
304 KING STREET.

Corner Westmorland, centrally located; coach in attendance at all trains and boats. Rates \$1.25 to \$1.50 per day; permanent and Transient. Phone connections. THOROUGHLY RENOVATED.

Harold M. Young, Prop

1914 Diaries

Our 1914 Diaries are now in.

Select yours while all the numbers are complete

The McMurray Book and Staty. Co. Ltd.

Pony votes with every purchase