

## CASTORIA

For Infants and Children.

**Mothers Know That  
Genuine Castoria**

Always  
Bears the  
Signature

of

*J. H. Fletcher*

In  
Use  
For Over  
Thirty Years  
**CASTORIA**

Exact Copy of Wrapper.

THE CENTAUR COMPANY, NEW YORK CITY.

### OF INTEREST TO WOMEN

#### NEW WAY TO FASTEN A BLOUSE.

An attractive way to fasten a blouse is by means of bound button-holes and crocheted buttons. Make button holes in each side of the blouse and bind. To bind, sew an eighth of an inch around the button hole, cut, turn, and bind on the wrong side. Fasten two crochet buttons together by carrying a thread back and forth underneath one button to the other. Button hole or single crochet over the threads. Fasten the buttons close enough together, so the front edges of the blouse will meet when the buttons are in place in the button holes.

The binding should of the button holes should be of a delicate color, if the blouse is white, or white if the blouse is colored.

#### CROCHET EDGE FOR TOWELS.

A new kind of crochet edge for guest towels or children's clothes is called a mile-a-minute edge. It is made as follows: Chain seven and join in a ring, chain three, d c in ring, chain three, one d c in ring, chain three, d c in ring. That makes four d c in ring with three chains between each. Chain three and one d c in chain of first loop for top edge. Turn, chain five, make four d c each with three chains between in second loop. Chain three, turn and make four d c (with three chains between each) into second loop. Chain three one d c in middle of the five chains turn chain, five and repeat the desired length.

#### TO SET COLORS BEFORE WASHING

It pays to set colors before wash-

ing colored materials. For blue use half a cup of vinegar and one tablespoonful of alum to a pail of water. Lavenders may be set with a tablespoonful of sugar of lead. Pinks and blacks may be set with salt, two cups to a pail of water, soak them several hours before washing.

#### HOUSEHOLD HELPS.

If ink in the ink well gets thick it may be deluted with strong black coffee and give better results than if diluted with water.

To clean marble basins, make a paste of whiting and soft soap and apply it with a soft cloth. Rinse with cold water and rub dry.

To separate egg yolks from the whites, break the eggs into a funnel over a cup. The whites pass through, the yolks remain.

#### BRITISH AIR RAIDS IN EGYPT.

Successful in Bringing Down Two Enemy Fokker Machines.

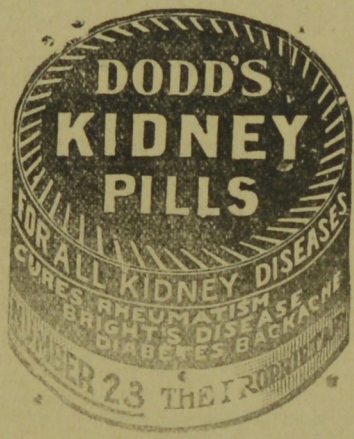
London, Nov. 13.—Two successful air raids have been carried out by aircraft operating with the British forces in Egypt, says an official announcement today. The points raided were Magdhaba and Birsaba. A ton of high explosives was dropped.

Two Fokker machines were brought down by our airplanes, all of which returned safely.

#### SHOCKING MURDER AND SUICIDE.

Newly Married Ontario Man Murders Wife and Kills Himself.

Brockville, Ont., Nov. 13.—In a fit of insanity, William Stokes, married ten days ago, murdered his wife today by cutting her throat with a razor. He then gashed his own throat so badly that he is not expected to recover.



### MOTIVES OF THE HUNS ARE HUMANITARIAN?

Amsterdam, via London, Nov. 13.—The Koelnische Volks Zeitung publishes a long article on the subject of Germany's deportation of Belgian workmen, in which it says in part: "These measures are not connected with the war, but are dictated solely by considerations of a sane police administration which could not allow thousands of able bodied workers to go to ruin by remaining deliberately unemployed and spending their time unprofitably in cafes. Germany's action is the result of humanitarianism which would justify even the use of coercion in the circumstances."

### DON'T SCOLD, MOTHER THE CROSS CHILD IS BILIOUS, FEVERISH

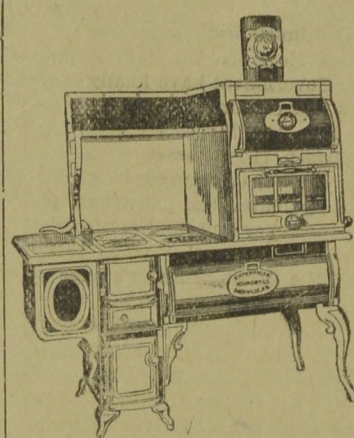
Look at Tongue! If Coated, Clean Little Stomach, Liver, Bowels.

Don't scold your fretful, peevish child. See if tongue is coated; this is a sure sign its little stomach, liver and bowels are clogged with sour waste.

When listless, pale, feverish, full of cold, breath bad, throat sore, doesn't eat, sleep or act naturally, has stomach-ache, indigestion, diarrhoea, give a teaspoonful of "California Syrup of Figs," and in a few hours all the foul waste, the sour bile and fermenting food passes out of the bowels and you have a well and playful child again. Children love this harmless "Fruit Laxative," and mothers can rest easy after giving it, because it never fails to make their little "insides" clean and sweet.

Keep it handy, Mother! A little given today saves a sick child tomorrow; but get the genuine. Ask your druggist for a 50-cent bottle of "California Syrup of Figs," which has directions for babies, children of all ages and for grown-ups plainly on the bottle. Remember, there are counterfeits sold here, so surely look and see that yours is made by the "California Fig Syrup Company." Hand back with contempt any other fig syrup.

## We Want Everybody to See the Enterprise Perfect Double High Oven Range



The Range that appeals to every woman. No more stoves to bake or cook.

It has two large ovens that can be used at the same time with the same fire, a great saving in fuel. Both ovens are at the right height to work; are fitted with thermometers, have doors to drop level with oven bottoms, and the door is fitted with a glass door, so contents can be seen at a glance without opening. The Warming Closet is double the usual size.

The cooking surface is surrounded with Porcelain Enamel, keeping it beautifully clean.

It is full of labor-saving devices, and for comfort, convenience and ease of management surpasses anything ever produced.

We cordially invite everyone, whether considering a purchase or not, to come in and look carefully over this splendid specimen of the Stove Makers' skill.

It's something we are proud of and anxious to show. Let us demonstrate it to you. If you cannot call, send for circular.

Enterprise Stoves always give satisfaction.

**D. J. Shea & Son**

#### SEED WHEAT.

WE NOW HAVE IN STOCK a quantity of Old Crop Red and White Fife Seed Wheat, which we offer for sale at \$2.50 per bushel. As this year's crop contains only a small percentage of choice wheat, prices next spring will be extremely high, and we can sell at this price only until this shipment is disposed of.

CUSTOM GRINDING Wheat, Buckwheat, Oats, etc., promptly attended to.

**F. H. EVERETT**

Aberdeen Street, near C. P. R. Station, FREDERICTON, N. B.

#### TO THE POLICYHOLDERS OF THE PRUDENTIAL INSURANCE COMPANY OF AMERICA.

NOTICE is hereby given that a meeting of the policyholders of The Prudential Insurance Company of America will be held at the Home Office of the said Company in the City of Newark, New Jersey, on Monday, the fourth day of December, 1916, at twelve o'clock noon, for the purpose of selecting fifteen persons to be voted for by the policyholders' Trustee as members of the Board of Directors, at the annual election of Directors of the Company to be held on the eighth day of January, 1917.

At such meeting every policyholder of the corporation who is of the age of twenty-one years or upwards and whose policy has been in force for at least one year last past, shall be entitled to cast one vote in person or by proxy.

FORREST F. DRYEN, President.

#### CANADIAN PACIFIC EXCURSIONS

From Fredericton  
\$14.55 Montreal and Ret.  
TICKETS ON SALE.

September 21st, 22nd and 23rd,  
Return October 9th.

September 28th, 29th and 30th,  
Return October 16th.

\$11.20 Boston and Ret.  
TICKETS ON SALE

September 16th to October 14th,  
Good for Thirty Days.

For full particulars apply to F. B. Edgecombe, City Ticket Agent or write M. G. Murphy, D. P. A., C. P. R., St. John.

## We Sell the Famous Sherlock-Manning Player Piano

All the Latest Sheet Music on hand

**E. O. MacDonald**

Music Store 560 Queen Street

## FURS! FURS!

NO NEED TO SUFFER WITH THE COLD when FUR COATS can be bought at such low prices from us.

WE HAVE REAL GOOD FUR COATS FOR MEN, none better to wear.

SOME GOOD VALUES IN LADIES' COATS. LADIES' NECK FURS AT BARGAIN PRICES.

**J. Clark & Son Ltd.**  
Corner York and King Streets

## Sportsmen and Guides!

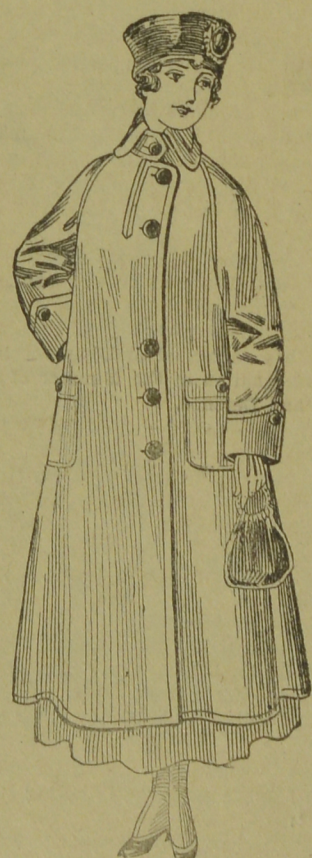
When you want the best work done on your Game Heads, etc; send them to me. I guarantee satisfaction at reasonable prices.

No Duty to pay on American Heads as I mount all these heads at my American Branch.

**GEO. A. DAVIS, TAXIDERMIST**  
281 Queen Street West. Fredericton, N. B. Phone 577-31  
VANCEBORO, ME. Send for Price List.

## Mail Ads Bring Results

## COATS, SUITS, DRESSES, SKIRTS and WAISTS.



COATS—Ladies', Misses' and Children's Cloth Coats. Nice heavy materials and excellent styles. Prices ranging from \$5.00 to \$50.00.

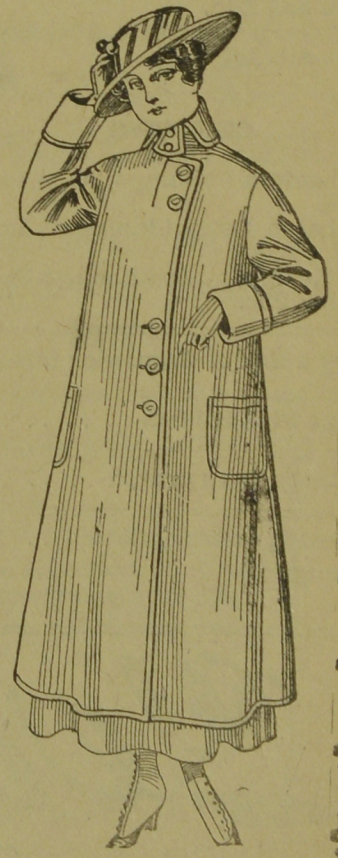
SUITS—Ladies' Suits in nice Tweeds, Corduroy, Gabardines and Serges. Lovely styles and wonderful values, from \$13.00 to \$33.50.

DRESSES—Ladies' Silk and Serge Dresses. Beautiful styles in all the newest colors. Prices ranging from \$8.75 to \$22.50.

SKIRTS—Lovely styles in Ladies' Skirts in all the newest materials. Prices ranging from \$3.75 to \$14.25.

WAISTS—Ladies' Blouses in Voile, Habutae, Pongee, Crepe de Chine, Ninon,orgette and Shadow Lace. Lovely styles. Prices ranging from \$1.89 to \$8.25.

**A. Murray & Co.**



## Tuberculosis Rapidly Increasing Among Children of Belgium and Northern France.

### More Food Urgently Needed to Keep up Their Strength

An interview with Mr. W. L. Honnold, American Director of the Belgian Relief Commission, brings to light a new danger threatening the population of the territory occupied by Germany.

Mr. Honnold reports that about 5,000,000 wholly or partially destitute people, who have been dependent on the Commission, generally show diminished vitality. The effects are most apparent among the older children, particularly those in the adolescent stage. Among these there is an alarming increase of tuberculosis, due to the lower power of resistance consequent on an inadequate diet.

To overcome this serious danger, the Commission appeals for extra contributions so that a special meal can be served every day in the schools. Efforts are also being made to provide as far as possible for children outside the schools.

This can only be done—Belgium's children can only be saved—if every one of us who can possibly do so will give something toward the Fund. Whatever you can afford, send your subscription weekly, monthly or in one lump sum to Local or Provincial Committees, or

Send Cheques Payable to **Belgian Relief Fund**  
59 ST. PETER STREET, MONTREAL.  
\$2.50 FEEDS A BELGIAN FAMILY ONE MONTH.

