

Exact Copy of Wrapper.

CASTORIA
For Infants and Children.
Mothers Know That
Genuine Castoria
Always
Bears the
Signature
of
Chas. H. Fletcher
In
Use
For Over
Thirty Years
CASTORIA
THE CENTAUR COMPANY, NEW YORK CITY.

WOMAN'S COLUMN

FOR THE NEEDLEWOMAN.

To embroider stem stitch, sew on the machine, using rather a short stitch along the stamped stem or scroll lines, being careful to follow exactly and putting paper underneath thin material; then thread a needle with the embroidery cotton or silk of the desired weight and pass the needle and thread, eye first, under each stitch keeping on the upper side of the material. A perfect raised cord is the result, and in far less time than when embroidering in the usual way.

In making shirtwaists or boy's blouses out of goods in which there is a wide white or light-colored stripe and also a stripe of dark color, cut the wrist bands or cuffs

in such a way that the dark stripe comes on the lower edge of the cuff. In this way the cuff does not show the soil so quickly.

Here is a way to make neckties of good quality and at low price. Take ribbon five and a half inches or wider; cut in one and a quarter yard lengths. Take canton flannel about twenty-seven inches long and one and one-half inches wide at ends and tapering toward the middle to width desired for neck band. Fold ribbon over lining and slip stitch up back. Cut edge of ribbon selvedge about one-fourth inch and fringe ends.

BLUE IS SMART FALL SHADE.

If you are in a quandary as to which color to choose for your

tailored suit, you will be safe in making it blue. This color is represented by the popular tones known as corbeau, raven's wing, soldier, Russian, Belgian, China, midnight, and navy. All tones of gray from the palest dove to the deepest tone of dreadnought, are very smart for street wear.

PREPARED WITH PEACHES.

Peach Ice Cream.

Peaches are so delicious just as they are that receipts for improving them are almost out of place. Nevertheless, peaches are as delicious made into various and sundry desserts as they are just plain. Peach ice cream is one good thing to make of them. This receipt is a good one: Mash a quart of peaches from which pits and skins have been removed. Sweeten to taste and mix with a quart of cream. Freeze. Another receipt calls for three cupfuls of peaches, mashed and sweetened, mixed with a pint of cream and a cupful of milk and two beaten eggs.

Peach Surprise.

Halved large peaches filled with vanilla ice cream are decidedly appetizing. Cut up peaches, chilled thoroughly and served with tiny slivers of ice and sweetened sweet cream are also good. And plain peaches and cream with fresh sponge cake probably make as good a dessert as one could find any place for a warm summer day.

CARLETON CAMPAIGN ENTERS ON LAST FULL WEEK

(Continued from page 2.)

with 1915, Mr. Veniot very effectively showed that of the total increase of \$547,341, no less a sum than \$416,900 was made up of increases in revenue for which the previous government had laid the foundation, and the present government had only continued the good work thus begun. For instance, the increase in fees from incorporated companies last year was \$18,755, due entirely to increase in the number of companies doing business. The sum of \$155,758 was realized from succession duties, an increase of \$143,000, owing to increased deaths, not at all due to any act of the present administration.

Over \$70,000 was realized by the imposition last year of an increase of 25 cents per thousand on stampage fees, \$7,000 for game licenses and \$11,000 for royalties.

"And yet," said Mr. Veniot, "I have not added to this an increase of some \$16,000 received from Federal subsidies. It can be readily seen that the only credit the government can honestly take for increase in the general revenue amounts to about \$100,000 over that of 1909."

NEARLY EVERY GIRL CAN MAKE HERSELF PRETTY AND ATTRACTIVE

SOME WHOLESOME TRUTHS EVERY GIRL SHOULD THINK ABOUT.

Probably you know just such a girl. Perhaps she is sixteen—good to look at, and pretty—quite interesting because she reflects the graces and the charm that give promise of happiness to herself and others. But she is not strong. The color in her cheeks, once so rosy, has faded away—her eyes are listless—the buoyancy of spirit and vigor she once possessed are sadly lacking. Parents, friends, this girl needs Ferrozone—needs it that her blood may be renewed—needs it to restore the nerve force that growth, study and the development of her fresh youth have exhausted. This girl will become a queen with Ferrozone—which will restore her color—bring back her old-time energy—give brightness to her eyes and vivacity to her spirits. In Ferrozone every girl finds strength—then she can do things. In Ferrozone there is endurance—that drives away morning tiredness and languor. For the girl or woman that wants to be happy, healthy, winning—who values rosy cheeks, laughing eyes and abundant good spirits, nothing can compare with Ferrozone. 50c. per box or six for \$2.50. Get it today from any dealer in medicine, or by mail from The Catarrhzone Co., Kingston, Ont.

CELESTIAL FLOUR

MADE IN FREDERICTON from Choice Hard Wheat by the best patent process.

Now fully equipped for custom grinding, Wheat, Oats, Buckwheat, etc.

Prompt service, and satisfaction guaranteed.

F. H. EVERETT

Aberdeen St., near C. P. R. Station.

FOR RETURNED SOLDIERS

NOTICE is hereby given that a branch of the Provincial Returned Soldiers' Aid Committee has been organized for the Counties of York, Sunbury and Queens, and the City of Fredericton, as a district, with Dr. T. C. Allen Chairman and Judge Wilson Secretary.

All employers of labor in said district willing to give preference to returned disabled soldiers as employees and all returned discharged soldiers wanting employment residing therein are requested to notify the secretary

JUDGE WILSON,

DR. T. C. ALLEN, Secretary.

TO THE POLICYHOLDERS OF THE PRUDENTIAL INSURANCE COMPANY OF AMERICA.

NOTICE is hereby given that a meeting of the policyholders of The Prudential Insurance Company of America will be held at the Home Office of the said Company in the City of Newark, New Jersey, on Monday, the fourth day of December, 1916, at twelve o'clock noon, for the purpose of selecting fifteen persons to be voted for by the policyholders' Trustee as members of the Board of Directors, at the annual election of Directors of the Company to be held on the eighth day of January, 1917.

At such meeting every policyholder of the corporation who is of the age of twenty-one years or upwards and whose policy has been in force for at least one year last past, shall be entitled to cast one vote in person or by proxy. FORREST F. DRYEN, President.



NO DIPPING NO SCRUBBING

WHEN YOU USE SANI-FLUSH REGULARLY.

Just sprinkle a little in the bowl each morning and a hitherto odious task is made easy. The result is a clean, white, sanitary closet. SANI-FLUSH is patented, nothing else like it. Its meant to clean toilet bowls, and it does it thoroughly. Should be used in residences, stores, business offices, hotels, factories and wherever closets are installed. It does not injure the plumbing.

D. J. SHEA & SON

We Sell the Famous

Sherlock-Manning Player Piano

All the Latest Sheet Music on hand

E. O. MacDonald

Music Store 560 Queen Street

Chalmers and Overland Station

Bicycle Repairing. Firearms Repaired. TIRES AND ACCESSORIES

Wm. C. BURTT, Fredericton N.B.
625 QUEEN STREET

No. 2 Improved Moody Thresher Titan Kerosine Engines

This combination gives a threshing outfit that is unequalled capacity, durability and all round satisfaction to operator and customer. They have been thoroughly tested and proved.

If you have regard for your own best interests you will get information about these machines before buying any other.

A number of improvements have been put on the thresher but is no advance in price.

J. Clark & Son Ltd.

50% of Belgian

comes from
Belgians
Abroad

They Are Doing Their Utmost
To Save Their Own People.

The whole-hearted devotion of Belgians in Canada, Great Britain and the United States, to the work of relieving those in their destitute Motherland, should be an added incentive to us to give all we can to the Belgian Relief Fund.

This is not charity—it is a debt of honor we owe to our heroic Allies, who checked the first onslaught of the Germans while France and Great Britain got time to rally and save the day on the Western Front.

The able-bodied men of Belgium are still in the fighting line, holding the trenches at the British left. Their women and children, and their old and wounded men, who have held out bravely under untold sufferings are looking to us for food and life. Our modest contributions to the Belgian Relief Fund will help to save them. Our failure to give our share will bring them a step nearer to grim starvation.

Can you ignore such desperate need, or fail to respond generously to such a pitiful call for help? Can you not undertake to feed at least one Belgian family when a contribution of \$2.50 per month will do it?

Whatever you feel you can give, send your subscription weekly, monthly, or in one lump sum to Local or Provincial Committees, or

SEND CHEQUES PAYABLE TO TREASURER

Belgian Relief Fund
59 St. Peter St., Montreal

\$2.50 Feeds a Belgian Family One Month.



READY-TO-WEAR

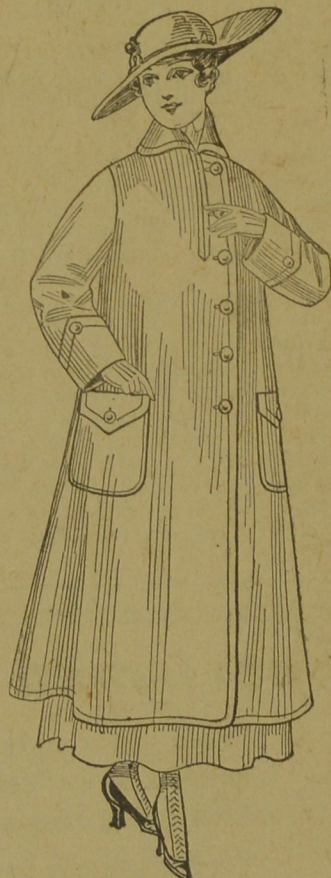
VISIT OUR DEPARTMENT AND INSPECT THE BEAUTIFUL STYLES IN READY-TO-WEAR.

LADIES' SUITS—We are showing a beautiful range of Fall Suits in Serges, Gabardines, and Broadcloths, in all the new shades. The Suits are much longer, some being nicely trimmed with braid, and some with fur. Prices range from \$15.75 to \$38.50.

WINTER COATS—Ladies', Misses' and Children's Winter Coats, in beautiful heavy Tweeds, Cheviots, Chinilla and Plush. Prices range from \$5.00 to \$45.00.

LADIES' CLOTH SKIRTS—Beautiful range of Cloth Skirts in Serges, Gabardines, Checks and Tweeds.

BLOUSES—Beautiful range of Ladies' Blouses in Voiles, Hamutae, Pongee, Crepe de Chine, Ninon and Georgette. Good values. Prices ranging from \$1.50 to \$7.50.



New Goods

IN EVERY DEPARTMENT.

HEAVY WHITE BLANKET CLOTH, 56 ins. wide, at \$2.25 per yard.

HEAVY CREAM VIVELLA, 56 inches wide, at \$1.75.

FALL COATINGS just opened. Some exclusive Coat lengths.

VIVELLA CLOTH in navy ground with white stripe and white ground with navy stripe, 46 ins. wide, at \$1.35 and \$1.50 per yard.

NEW CAPE GLOVES in Tan Shades at \$1.25 and \$1.35 per pair.

CORDED VELVETS in all shades, 27 inches wide, at 65 cents per yard.

Mail orders given prompt attention. Money refunded if goods are not satisfactory.

PHONE No. 423.

A. MURRAY & CO.

WHERE COURTESY AND QUALITY GO HAND-IN-HAND

