

# CASTORIA

For Infants and Children.

Mothers Know That  
Genuine Castoria

Always  
Bears the  
Signature  
of

*Dr. J. C. Ayer*

In  
Use  
For Over  
Thirty Years

# CASTORIA

Exact Copy of Wrapper.

THE CENTAUR COMPANY, NEW YORK CITY.

## WOMAN'S COLUMN

### HINTS FOR CARE OF HAIR.

What woman does not want soft, shiny and abundant hair. To gain this great care must be taken. Never neglect to comb out carefully each night. It is a great mistake to shake the hair down at bedtime, and leave it with twisted strands, as in this way it gets no chance of ventilation.

Whenever possible give your hair a sunbath. Shake the hair down, comb it out, and either sit with your back to an open window letting the sun and air play on it—or if you are the happy possessor of a garden—sit in the open air for half an hour or longer. This is an excellent way of drying the hair after it has been washed.

### HOME MADE CREAM PUFFS.

Cream puffs are a dessert that can be served in many different ways. That is to say, the cook that masters the making of cream puffs can with the same mixture make many different sorts of dessert. Here is a receipt for the puff:

Put half a cupful of butter in a cupful of cold water over the fire and when it reaches the boiling point add a cupful of sifted flour and cook, stirring until a smooth mass that leaves the sides of the saucepan results. Cool a little and then add two or three eggs, unbeaten, one at a time, beating the mixture well after each addition. Add a teaspoonful of sugar and a pinch of salt if desired. Drop the mixture in spoonfuls on a buttered tin for small cream puffs, or bake in buttered muffin tins if desired for large puffs.

For chocolate eclairs bake the above mixture in pans sold for eclairs. Fill the pans slightly.

For eclairs cover the tops with icing of some sort. Chocolate and coffee are the two kinds most used.

Cream puff shells can be filled with preserved fruit and served with a little whipped cream.

Either cream puff shells or eclair

shells can be filled just at the moment of serving with vanilla ice cream and then served with hot chocolate sauce.

### NUT ROLY-POLY.

Chop 1 cup of seeded raisins and 1 cup of mixed nut meats. Rub 2 tablespoons nut butter into 2 cups flour. Add  $\frac{1}{4}$  teaspoon salt. Mix to a stiff paste with cold water, like piecrust, roll to a thin sheet, sprinkle with sugar, then spread with the chopped nuts and raisins. Roll up, lay on a well buttered paper, brush with milk and bake 30 minutes. Serve with jelly.

## CANADIANS WIN THE VICTORIA CROSS

Ottawa, Oct. 26.—Two Canadian soldiers whose exploits have been recounted in the weekly communiqué of the Canadian "eye-witness," have been awarded the Victoria Cross, according to a cable tonight from London. They are Private and Acting Corporal Leo Clarke, whose next of kin is given as H. T. Clarke, 785 Pine Street, Winnipeg, and Private John Shipman Kerr, whose next of kin is given as Mrs. Robert Kerr, Fox River, Cumberland county, N. S.

### GALE BLEW OVER A BRIDGE.

Big Coal Loading Structure Meets Fate of Predecessor.

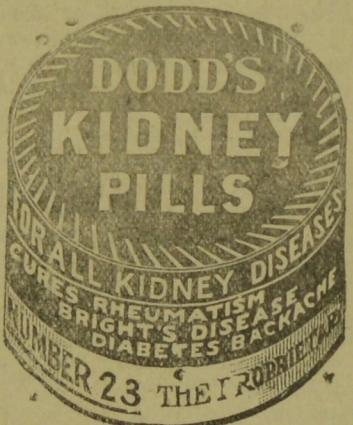
Sault Ste. Marie, Ont., Oct. 26.—During the gale which blew all day yesterday, the big coal unloading bridge at the New Ontario dock, valued at \$5,000, was blown over and reduced to a heap of scrap iron.

This bridge was built about four years ago after a similar fate had befallen the first bridge erected on the same ground.

### STEAMER SIDMOUTH GOES DOWN.

London, Oct. 26.—The British steamship Sidmouth has been sunk and her crew has been safely landed, reports Lloyds shipping agency.

The Sidmouth hailed from Cardiff, was built in 1903, of 4,045 tons gross, and belonged to Anning Bros., of Stockton.



### CANADIANS FOR THE NAVY.

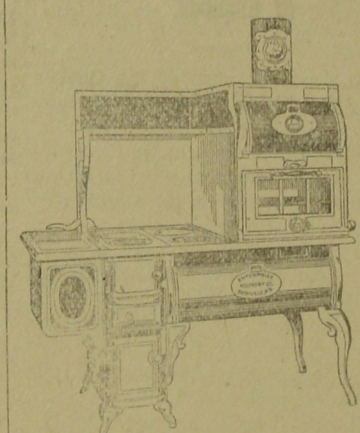
Ottawa, Oct. 26.—Thirty recruits for the British navy, the first batch of Canadians enlisted under the new recruiting system, have left Halifax for England. They will undergo a course of training there before leaving for service.

### FREDERICTON FIRE ALARM.

- 6 Corner York and Argyle
- 12 Corner Westmorland and Aberdeen
- 13 Corner Northumberland and Saunders
- 14 Corner Brunswick and Smythe.
- 15 Corner Charlotte and Smythe
- 16 Corner George and Northumberland.
- 17 Corner King and Northumberland.
- 21 City Hall
- 23 Corner York and George
- 24 Corner Queen and Westmorland
- 25 Corner Brunswick and Westmorland
- 26 Corner Charlotte and Westmorland.
- 27 Corner King and York
- 28 Corner Saunders and York
- 31 Corner Queen and Regent
- 32 Corner Needham and Regent
- 34 Corner Queen and Carleton
- 35 Corner Brunswick and Carleton
- 36 Corner Charlotte and Carleton
- 37 Corner George and Regent
- 38 Corner King and Regent
- 44 Corner Queen and St. John
- 45 Corner Brunswick and St. John
- 46 Corner Charlotte and St. John
- 51 Corner King and Church
- 52 Corner George and Church
- 53 Corner Union and Church
- 54 Gas House
- 55 Intercolonial Railway Station
- 56 Lansdowne and Waterloo Row.

**Wood's Phosphorine,**  
The Great English Remedy.  
Tones and invigorates the whole nervous system, makes new blood in old veins, cures nervous debility, mental and brain worry, despondency, loss of energy, palpitation of the heart, failing memory. Price \$1 per box, six for \$5. One will please, six will cure. Sold by all druggists or mailed in plain pkg. on receipt of price. New pamphlet mailed free. THE WOOD MEDICINE CO., TORONTO, ONT. (Formerly Windsor.)

## We Want Everybody to See the Enterprise Perfect Double High Oven Range



The Range that appeals to every woman. No more stooping to bake or cook.

It has two large ovens that can be used at the same time and with the same fire; hence a great saving in fuel. Both these ovens are at the right height to work; are fitted with thermometers, and have doors to drop level with oven bottoms, and the lower one is fitted with a glass door, so contents can be seen at a glance without opening. The Warming Closet is double the usual size.

The cooking surface is surrounded with Porcelain Enamel, keeping it beautifully clean.

It is full of labor-saving devices, and for comfort, convenience and ease of management surpasses anything ever produced.

We cordially invite everyone, whether considering a purchase or not, to come in and look carefully over this splendid specimen of the Stove Makers' skill.

It's something we are proud of and anxious to show. Let us demonstrate it to you. If you cannot call, send for circular.

Enterprise Stoves always give satisfaction.

## D. J. Shea & Son

### F. H. EVERETT

Aberdeen Street, near C. P. R. Station,  
FREDERICTON, N. B.

WHEAT, OATS, BUCKWHEAT, etc.  
PROMPTLY GROUND and satisfactory returns guaranteed.

CHOICE FLOUR MANUFACTURED FROM NEW BRUNSWICK WHEAT by the latest patent roller process.

Shipments by rail received and returned to station free of cartage charges.

"CELESTIAL FLOUR," made from No. 1 Manitoba Wheat, for sale in 98 lb. bags at the lowest market price.

TO THE POLICYHOLDERS OF  
THE PRUDENTIAL INSURANCE  
COMPANY OF AMERICA.

NOTICE is hereby given that a meeting of the policyholders of The Prudential Insurance Company of America will be held at the Home Office of the said Company in the City of Newark, New Jersey, on Monday, the fourth day of December, 1916, at twelve o'clock noon, for the purpose of selecting fifteen persons to be voted for by the policyholders' Trustee as members of the Board of Directors, at the annual election of Directors of the Company to be held on the eighth day of January, 1917.

At such meeting every policyholder of the corporation who is of the age of twenty-one years or upwards and whose policy has been in force for at least one year last past, shall be entitled to one vote in person or by proxy. FORREST F. DRYDEN, President.

## CANADIAN PACIFIC EXCURSIONS

From Fredericton

\$14.55 Montreal and Ret.

TICKETS ON SALE.

September 21st, 22nd and 23rd,

Return October 9th.

September 28th, 29th and 30th,

Return October 16th.

\$11.20 Boston and Ret.

TICKETS ON SALE.

September 16th to October 14th,

Good for Thirty Days.

For full particulars apply to F. B. Edgecombe, City Ticket Agent or write M. G. Murphy, D. P. A., C. P. R., St. John.

## We Sell the Famous Sherlock-Manning Player Piano

All the Latest Sheet Music on hand

## E. O. MacDonald

Music Store 560 Queen Street

We have one second hand 4 H.P. Engine and a second hand Moody Thresher in running order. Just the out-fit for a farmer's own use. Only \$100.

## J. Clark & Son Ltd.

## Sportsmen and Guides!

When you want the best work done on your Game Heads, etc; send them to me. I guarantee satisfaction at reasonable prices.

No Duty to pay on American Heads as I mount all these heads at my American Branch.

## GEO. A. DAVIS, TAXIDERMIST

281 Queen Street West. Fredericton, N. B. Phone 577-31  
VANCEBORO, ME. Send for Price List.

## Mail Ads Bring Results

## Special Sale of Winter Coat- ings and Coat Lengths For FRIDAY and SATURDAY

BLUE AND RED SERGE COATINGS, 50 and 54 inches wide, reg. 75c., for . . . . . 55c.

BLUE SERGE COATING, 54 inches wide, reg. \$1.25, for . . . . . 85c.

DARK GREEN CHINCHILLA AND NAVY BLUE BLANKET CLOTH, 54 in. wide, reg. \$1.35, for . . . . . \$1.00

ROSE BLANKET CLOTH, NAVY BLUE and BLACK CHINCHILLA, 54 inches wide, reg. \$1.50, for . . . . . \$1.20

BLANKET CLOTH IN NAVY, BLACK and RED, BLUE CURL CLOTH and TWEED MIXTURES, CHINCHILLA CLOTH IN NAVY and BLACK, 54 inches wide, reg. \$1.65, for . . . . . \$1.35

HEAVY SERGE COATINGS in GOLDEN BROWN, NAVY and BLACK, BLACK BEAVER CLOTH, BLACK and WHITE CHECK COATING, also TWEED EFFECTS, 54 inches wide, reg. \$1.90, for . . . . . \$1.45

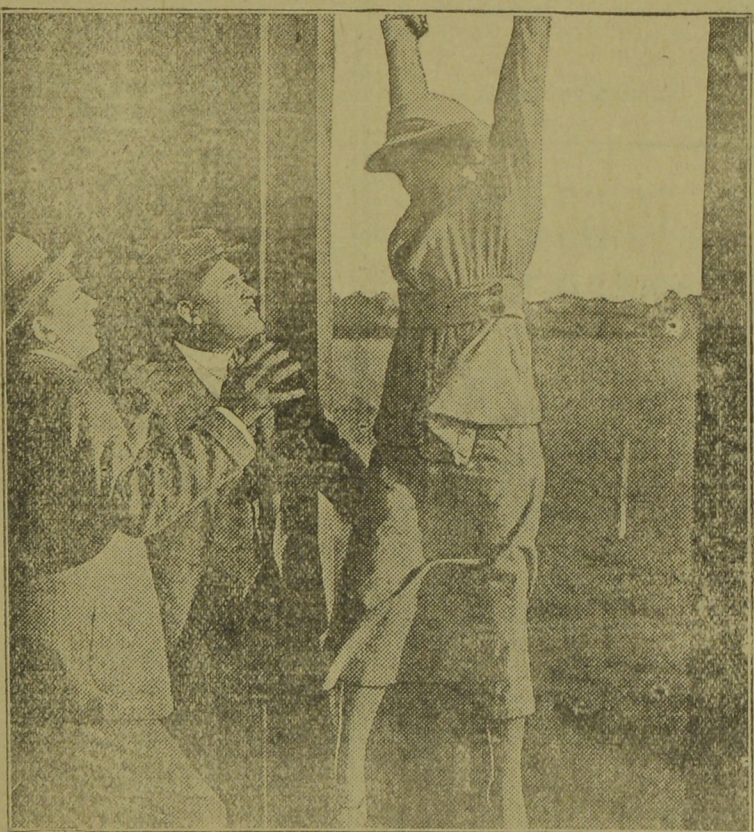
GREY, BLANKET CLOTH, BLACK and GREY CHINCHILLA and other Fancy Coat Lengths of three yards each, 54 inches wide, reg. \$2.25, for . . . . . \$1.75 a yard

FANCY COAT LENGTHS OF 3 YARDS EACH, reg. \$2.50, for . . . . . \$1.85 per yard

FANCY COATINGS and COAT LENGTHS, reg. \$2.75, for . . . . . \$1.95 per yard

## A. MURRAY & CO.

WHERE COURTESY AND QUALITY GO HAND-IN-HAND



Swung in on Them From the Roof.