

Confessions of an Every-Day Wife

By Idah McGlone Gibson

"A LITTLE CHILD SHALL LEAD THEM."

As I saw my husband looking up to me through the eyes of our child, I no longer thought of it as mine alone. "Not my baby, but our baby, Theo's and mine. The only immortality that we can really know born of our love and ecstasy, the living epitome of all our hopes."

Because we have loved, this child shall take us—the best part of us—to give to its child, and that in turn shall be passed on to other children.

In that moment there was born in me the greatest pity for the childless woman who must forever stand without the gates—deprived of posterity.

"Where is Theo?" I asked.

Before the nurse could answer, Eliene came forward and said, "He has gone over to the house for a moment to bring back some things that you require."

I looked about me in astonishment, as I realized for first time that I was in a hospital. Surely my brain must have been a little inert not to have seen immediately that these sanitary rooms and the white bed were not my own luxurious belongings. "He will be back immediately," she added, "and I want to see him when he finds out you are all right again."

"Have I been otherwise than all right?" I asked languidly, for I was beginning to feel weary.

"My dear girl, do you know how long it has been since we brought you here?"

"Night before last," I answered.

"You came here six weeks ago today," said Eliene solemnly "and your baby was born the morning after you arrived."

It was impossible for me to understand it all, but gradually things became clearer in my mind.

"How are your father and husband, Eliene?"

"Both are well. Everyone is well and everyone will be happy now that you are going to stay with us a while."

The nurse nodded and Eliene came over to kiss me good bye. They took the baby from my breast and the nurse said, "Sleep a little, Mrs. Symone, for when your husband comes he will have a surprise for you I am sure."

IN TUBE FORM

VETERANS CREMY FLAVORS

Non-Alcoholic, More Economical, More Effective Than Any Bottle Flavor Made.

The quickest and surest way to suppress the Lemon Extract evil is for everyone sincerely interested in the social welfare of our province to immediately STOP the buying of any form of liquid extracts which contain from 75 to 90 per cent. alcohol.

WHY NOT, when we have a better product from every standpoint than any bottle flavor on the market. All Flavor—No Alcohol.

A TRIAL IS CONVINCING—ASK YOUR GROCER—NOW IN ALL STORES!

In Six Flavors, Lemon, Vanilla, Maple, Almond, Rose and Pineapple. Manufactured and Guaranteed by

COMMERCIAL BROKERAGE CO., LTD.,

99 Prince William Street, St. John, N. B.

THE EXTRACT OF THE FUTURE

From Out the Night
You Hear the Cry:

"Oh! Why Can't I
Get to Sleep?"

Thousands of people all over the country ask this question, but still continue to toss, night after night, on sleepless beds, or walk the bedroom floor until near dawn. Their eyes do not close in the sweet and refreshing repose that comes to those whose heart and nerves are right. Worry or disease has so debilitated and irritated the nervous system that it cannot be quietened. Or, again, there is palpitation of the heart, the sleep is broken by terrible dreams, you wake up with smothering spells, sinking sensations and a fear of impending death.

To be able to lie down at night and in a few minutes fall asleep—to know no dream or waking until morning—then to bound out of bed full of vigor, freshness and good spirits, ready for each and every duty the day may demand, is a blessing that can be easily achieved by using

MILBURN'S HEART AND NERVE PILLS

They soon induce healthful, refreshing sleep, not by deadening the nerves, but by restoring them to healthy action, and removing all symptoms of heart trouble, which is often the cause of nervousness and sleeplessness.

Milburn's Heart and Nerve Pills are 50c a box at all dealers, or mailed direct on receipt of price by The T. Milburn Co., Limited, Toronto Ont.

I was too weak to be even curious about any surprise that Theo might have for me. I was even a little glad to have her take from my arms the tiny form of my child.

For a moment, however, I did speculate idly on how helpless the will is when the flesh contradicts its commands.

With all my love and single-minded desire to have and to hold forever my child, the physical part of me said No, and it was with a sense of relief that I felt the nurse take my baby away. I was not, however, to see Theo that night, for Father Symone had a slight paralytic stroke and Robert and Theo were with him all night.

Aunt Margie and Eliene came to see me early the next morning. I had not seen Theo yet, although the nurse told me that he had come in very early while I was asleep and then had gone home to get a little sleep himself.

"I wish, Mrs. Symone, you could have seen your husband's face as he looked at you and the baby. We had put the baby to nurse and it had wakened neither of you. Mr. Symone just put his hand softly on the baby's head and said, 'The family is all right at last, nurse.'"

"Yes, sir," I said, then he smiled and quietly went away."

Eliene was anxious to tell me about Anice Hatton, but she did not broach the subject until I happened to think that almost the last conscious moment I had was when Eliene told me that Anice and Chad were coming back that night.

Then had come the unexpected. Without warning I was taken with a convulsion after which my life was saved only by the most drastic of operations. For a time my baby's life was despaired of and when I awoke to consciousness it was with a cloudy mind.

Things were coming back to me rapidly now. And the sight of Aunt Margie made me ask about Chad and his wife.

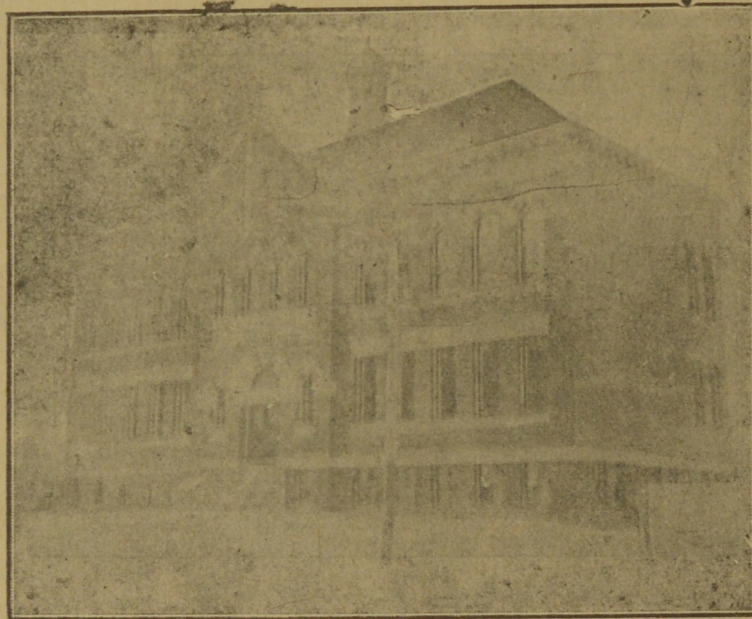
(Tomorrow—"The Story of Chad and Anice Hatton.")

CHRISTMAS CLOSING IN THE PUBLIC SCHOOLS TODAY

(Continued from page three.) ried out a programme of recitations were by Roy Livingstone, Douglas and songs and had their room trimmed Keenan, Roy McKinnon, Louis Doran, with greetings.

Adelard Cormier, Philip Cox, George The following were never absent Coyle, Gerald McGinnis, Kathleen during the term: Catherine Cain, Helen Hughes, and Roy Livingstone. en McLennan, Loretta Rowan, Ther-

Those who were never absent during eta Shea, Doris Walsh, John King, the term were: Charles Hughes, Fred McDonald, Frank Owens, Miles Joseph King, Gerald Shea, Catherine King, Arthur Duffy, Edward Crawford



ST. DUNSTAN'S SCHOOL

Allee, Clifford Burns, Marjory Cremin, On the blackboard two Christmas trees were drawn and in each of these trees the pupils who made the highest marks during the term had their names inscribed.

Charlotte Street School

The closing exercises of the Char-

Sister Clarice's Room

In Sister Clarice's Room grades V. and VI, there was a program of songs recitations and review of the school work. On this blackboard there were drawings by the following girls and boys: Earle Rowan, Roy Ward, Walter McLennan, Margaret White, Rose Doolan, Yvonne Cormier, Helena Doyle, Alice McGinnis, Mabel Shannon, Constance Deedes, Helen Kane, Alice Sullivan, Edna Ward, Percy Thompson, Kathleen Thompson.

Those never absent during the term were Mollie Cardin, Rose Doolan, Yvonne Foster, Eva Goodine, Mary Goodine, Kathleen Higgins, Kathleen Ivory, Fred McGinnis, Mary McGinnis, Mary Higgins, Mary Lifford, Earle Rowan, Margaret White, Mabel Shannon, Dorothy Hughes, Esther Cremin, Helen Coyle and Edna McKenna.

Miss Davies' Room

In Miss Davies' room, Grades II and III, the following pupils were never absent: Beatrice Cain, Edna Crowley, Mary Foster, Eulodie Legene, William Lifford, Frances McGinnis, Josephine McGahey, Mary O'Connor, Mary O'Leary, John Sullivan, Ivan White, Madeline Burns, Helen Burns, Gertrude Cremin, John Keenan and Rose O'Leary.

Drawings on the blackboard were done by Jack Foley, Helen McGrath, Jack Sullivan, Mary Foster, Edward McGoldrick, Aubrey Ward, Donald Higgins, Walter Grant.

An interesting programme of songs, Christmas choruses and dialogues was carried out and a review of the school work.

Sister Augustine's Room

In Sister Augustine's room, Grade I there was only a small attendance of pupils, about sixteen being away sick with the mumps. The little ones dar-

DOES IT HURT YOU TO BEND OVER?

This is a Sign of Kidney Weakness, But Can be Quickly Cured.

Don't give up! You can be cured and made well again. That backache and dragging weariness can be stopped for all time.

Those sharp attacks when bending over, and that lameness in the morning can also be overcome.

Every ache and pain due to kidney weakness will disappear quickly once you start to use Dr. Hamilton's Pills, a marvellous remedy long ago made famous by its strange healing effect upon the kidneys and liver.

Don't wait till that dragging pain in the loins grows worse. Start the cure today.

Delay will mean swelled ankles and limbs, sharp rheumatic pains in the muscles and joints, and other painful symptoms as well.

If you are always tired, have continuous headache, dizzy spells and specks before your eyes or ringing noises in the ears—these are common symptoms that warn you of the immediate need of Dr. Hamilton's Pills of Mandrake and Butternut. Sold in 25c boxes.

prove yourself.

lotte Street School were held in the assembly hall this morning and were largely attended by parents and friends of the pupils.

The hall was used today for the last time as an assembly hall as it is the purpose of the trustees to divide the hall into class rooms before the closing in June.

The programme which was carried out follows:

Chorus—O Canada.

(Continued on page 5.)



MAIL CONTRACT

SEALED TENDERS addressed to the Postmaster General will be received at Ottawa until noon on FRIDAY, the 19th December, 1919, for the conveyance of His Majesty's Mails, on a proposed Contract for four years, 6 times per week on the Margerville Rural Route No. 1, commencing at the pleasure of the Postmaster General.

Printed notices containing further information as to conditions of proposed Contract may be seen, and blank forms of Tender may be obtained at the Post Offices of Margerville and Sheffield, and at the office of the Post Office Inspector.

H. W. WOODS, Post Office Inspector

Post Office Inspector's Office, St. John, N. B., Nov. 6th, 1919.

Collars of maize colored organdie are excellent.

SPECIAL TRAIN SERVICE FOR THE HOLIDAYS

Daily Excepting Sunday Passenger Train on Valley Ry. Between St. John and Fredericton.

During the Christmas and New Year holiday season, the Canadian National Railways will operate a special passenger train service via the Valley Railway between St. John and Fredericton. In addition to the regular service now in effect, this passenger train will leave Fredericton (daily except Sunday) at 7.00 a. m., arriving in St. John at 10.30 a. m.

Returning the train will leave St. John at 4.30 p. m., and arrive in Fredericton at 8.00 p. m. This special service will be in effect from Monday, December 22nd, to Saturday, January 3rd, 1920 (inclusive) and will greatly accommodate the travelling public, providing also for the increased holiday travel.

Regular passenger fares will apply between all points between St. John and the Capital City.



MAIL CONTRACT

SEALED TENDERS addressed to the Postmaster General will be received at Ottawa until noon on FRIDAY, the 19th December, 1919, for the conveyance of His Majesty's Mails, on a proposed Contract for four years, 2 times per week, on the Chipman Rural Route No. 1, commencing at the pleasure of the Postmaster General.

Printed notices containing further information as to conditions of proposed Contract, and blank forms of Tender may be obtained at the post offices of Chipman and Linton and at the office of the Post Office Inspector.

H. W. WOODS, Post Office Inspector. Post Office Inspector's Office, St. John, N. B., Nov. 7th, 1919.

The Great English Remedy. Jones and invigorates the whole nervous system, restores new blood in old veins, cures Nervous Debility, Mental and Brain Worms, Leucorrhoea, Loss of Energy, Palpitation of the Heart, Failing Memory. Price 21 per box, six for \$1. Sold by all druggists or mail a. n. price, on receipt of price. Non-patented free. THE WOOD MEDICINE CO., TORONTO, ONT. (Canada) 4141-3

Canadian National Railways

Special Passenger Train Service

FOR CHRISTMAS AND NEW YEAR HOLIDAYS

Between FREDERICTON AND ST. JOHN VIA VALLEY RAILWAY ROUTE.

Daily Except Sunday, from December 22nd, 1919, to January 3rd, 1920 (inclusive)

In addition to the Regular Train Service between St. John and Centreville, a Special Passenger Train will run as follows:

(Eastern Standard Time.)

7.00 a. m.—Leave Fredericton Ar. 8.00 p. m.
10.30 a. m.—Ar. St. John Lv. 4.30 p. m.

REGULAR PASSENGER FARES WILL APPLY

For further information apply at TICKET OFFICE.

QUEBEC—ST. JOHN		St. John—Quebec	
Swanston (Road Drive)	Quebec (Patrie Station)	Ar. 11.50 a.m.	Dep. 12.45 a.m.
Ar. 1.05 p.m.	Edmonton	Ar. 1.35 a.m.	Dep. 12.45 a.m.
Time 1.49 a.m.	Edmonton	Ar. 1.35 a.m.	Dep. 12.45 a.m.
Dep. 7.50 a.m.	St. John	Ar. 1.35 a.m.	Dep. 12.45 a.m.
Ar. 1.47 a.m.	St. John	Ar. 1.35 a.m.	Dep. 12.45 a.m.
Time 4.03 a.m.	Grand Falls	Ar. 1.35 a.m.	Dep. 12.45 a.m.
Dep. 7.50 a.m.	Grand Falls	Ar. 1.35 a.m.	Dep. 12.45 a.m.
Ar. 1.47 a.m.	Grand Falls	Ar. 1.35 a.m.	Dep. 12.45 a.m.
Time 4.03 a.m.	Grand Falls	Ar. 1.35 a.m.	Dep. 12.45 a.m.
Dep. 7.50 a.m.	Grand Falls	Ar. 1.35 a.m.	Dep. 12.45 a.m.
Ar. 1.47 a.m.	Grand Falls	Ar. 1.35 a.m.	Dep. 12.45 a.m.
Time 4.03 a.m.	Grand Falls	Ar. 1.35 a.m.	Dep. 12.45 a.m.
Dep. 7.50 a.m.	Grand Falls	Ar. 1.35 a.m.	Dep. 12.45 a.m.
Ar. 1.47 a.m.	Grand Falls	Ar. 1.35 a.m.	Dep. 12.45 a.m.
Time 4.03 a.m.	Grand Falls	Ar. 1.35 a.m.	Dep. 12.45 a.m.
Dep. 7.50 a.m.	Grand Falls	Ar. 1.35 a.m.	Dep. 12.45 a.m.
Ar. 1.47 a.m.	Grand Falls	Ar. 1.35 a.m.	Dep. 12.45 a.m.
Time 4.03 a.m.	Grand Falls	Ar. 1.35 a.m.	Dep. 12.45 a.m.
Dep. 7.50 a.m.	Grand Falls	Ar. 1.35 a.m.	Dep. 12.45 a.m.
Ar. 1.47 a.m.	Grand Falls	Ar. 1.35 a.m.	Dep. 12.45 a.m.
Time 4.03 a.m.	Grand Falls	Ar. 1.35 a.m.	Dep. 12.45 a.m.
Dep. 7.50 a.m.	Grand Falls	Ar. 1.35 a.m.	Dep. 12.45 a.m.
Ar. 1.47 a.m.	Grand Falls	Ar. 1.35 a.m.	Dep. 12.45 a.m.
Time 4.03 a.m.	Grand Falls	Ar. 1.35 a.m.	Dep. 12.45 a.m.
Dep. 7.50 a.m.	Grand Falls	Ar. 1.35 a.m.	Dep. 12.45 a.m.
Ar. 1.47 a.m.	Grand Falls	Ar. 1.35 a.m.	Dep. 12.45 a.m.
Time 4.03 a.m.	Grand Falls	Ar. 1.35 a.m.	Dep. 12.45 a.m.
Dep. 7.50 a.m.	Grand Falls	Ar. 1.35 a.m.	Dep. 12.45 a.m.
Ar. 1.47 a.m.	Grand Falls	Ar. 1.35 a.m.	Dep. 12.45 a.m.
Time 4.03 a.m.	Grand Falls	Ar. 1.35 a.m.	Dep. 12.45 a.m.
Dep. 7.50 a.m.	Grand Falls	Ar. 1.35 a.m.	Dep. 12.45 a.m.
Ar. 1.47 a.m.	Grand Falls	Ar. 1.35 a.m.	Dep. 12.45 a.m.
Time 4.03 a.m.	Grand Falls	Ar. 1.35 a.m.	Dep. 12.45 a.m.
Dep. 7.50 a.m.	Grand Falls	Ar. 1.35 a.m.	Dep. 12.45 a.m.
Ar. 1.47 a.m.	Grand Falls	Ar. 1.35 a.m.	Dep. 12.45 a.m.
Time 4.03 a.m.	Grand Falls	Ar. 1.35 a.m.	Dep. 12.45 a.m.
Dep. 7.50 a.m.	Grand Falls	Ar. 1.35 a.m.	Dep. 12.45 a.m.
Ar. 1.47 a.m.	Grand Falls	Ar. 1.35 a.m.	Dep. 12.45 a.m.
Time 4.03 a.m.	Grand Falls	Ar. 1.35 a.m.	Dep. 12.45 a.m.
Dep. 7.50 a.m.	Grand Falls	Ar. 1.35 a.m.	Dep. 12.45 a.m.
Ar. 1.47 a.m.	Grand Falls	Ar. 1.35 a.m.	Dep. 12.45 a.m.
Time 4.03 a.m.	Grand Falls	Ar. 1.35 a.m.	Dep. 12.45 a.m.
Dep. 7.50 a.m.	Grand Falls	Ar. 1.35 a.m.	Dep. 12.45 a.m.
Ar. 1.47 a.m.	Grand Falls	Ar. 1.35 a.m.	Dep. 12.45 a.m.
Time 4.03 a.m.	Grand Falls	Ar. 1.35 a.m.	Dep. 12.45 a.m.
Dep. 7.50 a.m.	Grand Falls	Ar. 1.35 a.m.	Dep. 12.45 a.m.
Ar. 1.47 a.m.	Grand Falls	Ar. 1.35 a.m.	Dep. 12.45 a.m.
Time 4.03 a.m.	Grand Falls	Ar. 1.35 a.m.	Dep. 12.45 a.m.
Dep. 7.50 a.m.	Grand Falls	Ar. 1.35 a.m.	Dep. 12.45 a.m.
Ar. 1.47 a.m.	Grand Falls	Ar. 1.35 a.m.	Dep. 12.45 a.m.
Time 4.03 a.m.	Grand Falls	Ar. 1.35 a.m.	Dep. 12.45 a.m.
Dep. 7.50 a.m.	Grand Falls	Ar. 1.35 a.m.	Dep. 12.45 a.m.
Ar. 1.47 a.m.	Grand Falls	Ar. 1.35 a.m.	Dep. 12.45 a.m.
Time 4.03 a.m.	Grand Falls	Ar. 1.35 a.m.	Dep. 12.45 a.m.
Dep. 7.50 a.m.	Grand Falls	Ar. 1.35 a.m.	Dep. 12.45 a.m.
Ar. 1.47 a.m.	Grand Falls	Ar. 1.35 a.m.	Dep. 12.45 a.m.
Time 4.03 a.m.	Grand Falls	Ar. 1.35 a.m.	Dep. 12.45 a.m.
Dep. 7.50 a.m.	Grand Falls	Ar. 1.35 a.m.	Dep. 12.45 a.m.
Ar. 1.47 a.m.	Grand Falls	Ar. 1.35 a.m.	Dep. 12.45 a.m.
Time 4.03 a.m.	Grand Falls	Ar. 1.35 a.m.	Dep. 12.45 a.m.
Dep. 7.50 a.m.	Grand Falls	Ar. 1.35 a.m.	Dep. 12.45 a.m.
Ar. 1.47 a.m.	Grand Falls	Ar. 1.35 a.m.	Dep. 12.45 a.m.
Time 4.03 a.m.	Grand Falls	Ar. 1.35 a.m.	Dep. 12.45 a.m.
Dep. 7.50 a.m.	Grand Falls	Ar. 1.35 a.m.	Dep. 12.45 a.m.
Ar. 1.47 a.m.	Grand Falls	Ar. 1.35 a.m.	Dep. 12.45 a.m.
Time 4.03 a.m.	Grand Falls	Ar. 1.35 a.m.	Dep. 12.45 a.m.
Dep. 7.50 a.m.	Grand Falls	Ar. 1.35 a.m.	Dep. 12.45 a.m.
Ar. 1.47 a.m.	Grand Falls	Ar. 1.35 a.m.	Dep. 12.45 a.m.
Time 4.03 a.m.	Grand Falls	Ar. 1.35 a.m.	Dep. 12.45 a.m.
Dep. 7.50 a.m.	Grand Falls	Ar. 1.35 a.m.	Dep. 12.45 a.m.
Ar. 1.47 a.m.	Grand Falls	Ar. 1.35 a.m.	Dep. 12.45 a.m.
Time 4.03 a.m.	Grand Falls	Ar. 1.35 a.m.	Dep. 12.45 a.m.
Dep. 7.50 a.m.	Grand Falls	Ar. 1.35 a.m.	Dep. 12.45 a.m.
Ar. 1.47 a.m.	Grand Falls	Ar. 1.35 a.m.	Dep. 12.45 a.m.
Time 4.03 a.m.	Grand Falls	Ar. 1.35 a.m.	Dep. 12.45 a.m.
Dep. 7.50 a.m.	Grand Falls	Ar. 1.35 a.m.	Dep. 12.45 a.m.
Ar. 1.47 a.m.	Grand Falls	Ar. 1.35 a.m.	Dep. 12.45 a.m.
Time 4.03 a.m.	Grand Falls	Ar. 1.35 a.m.	Dep. 12.45 a.m.
Dep. 7.50 a.m.	Grand Falls	Ar. 1.35 a.m.	Dep. 12.45 a.m.
Ar. 1.47 a.m.	Grand Falls	Ar. 1.35 a.m.	Dep. 12.45 a.m.
Time 4.03 a.m.	Grand Falls	Ar. 1.35 a.m.	Dep. 12.45 a.m.
Dep. 7.50 a.m.	Grand Falls	Ar. 1.35 a.m.	Dep. 12.45 a.m.
Ar. 1.47 a.m.	Grand Falls	Ar. 1.35 a.m.	Dep. 12.45 a.m.
Time 4.03 a.m.	Grand Falls	Ar. 1.35 a.m.	Dep. 12.45 a.m.
Dep. 7.50 a.m.	Grand Falls	Ar. 1.35 a.m.	Dep. 12.45 a.m.
Ar. 1.47 a.m.	Grand Falls	Ar. 1.35 a.m.	Dep. 12.45 a.m.
Time 4.03 a.m.	Grand Falls	Ar. 1.35 a.m.	