

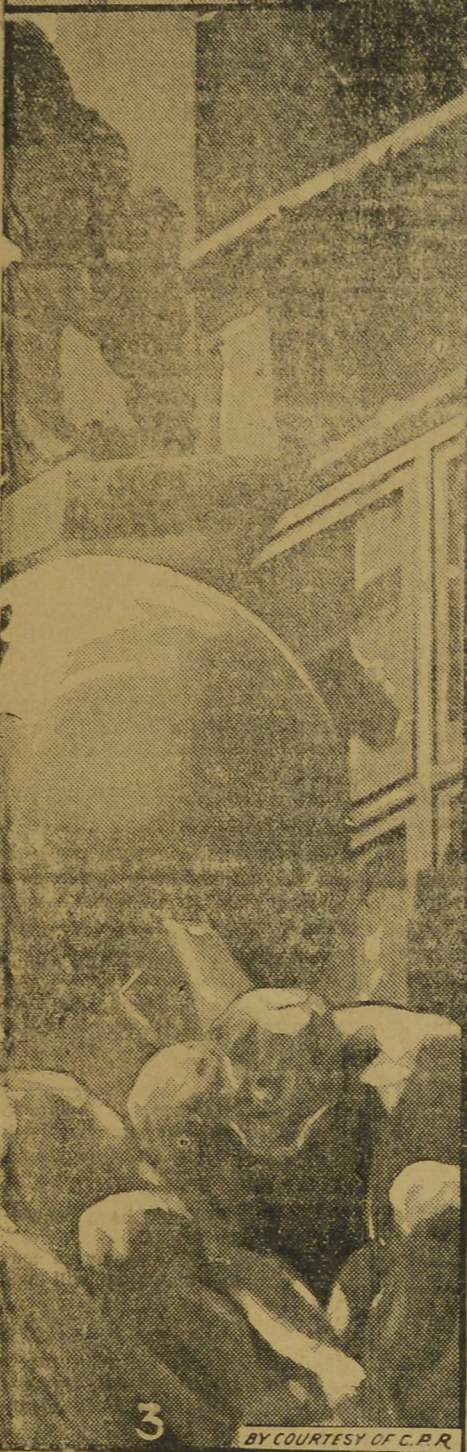


1 BY COURTESY OF C.P.R.



2

BY COURTESY OF C.P.R.



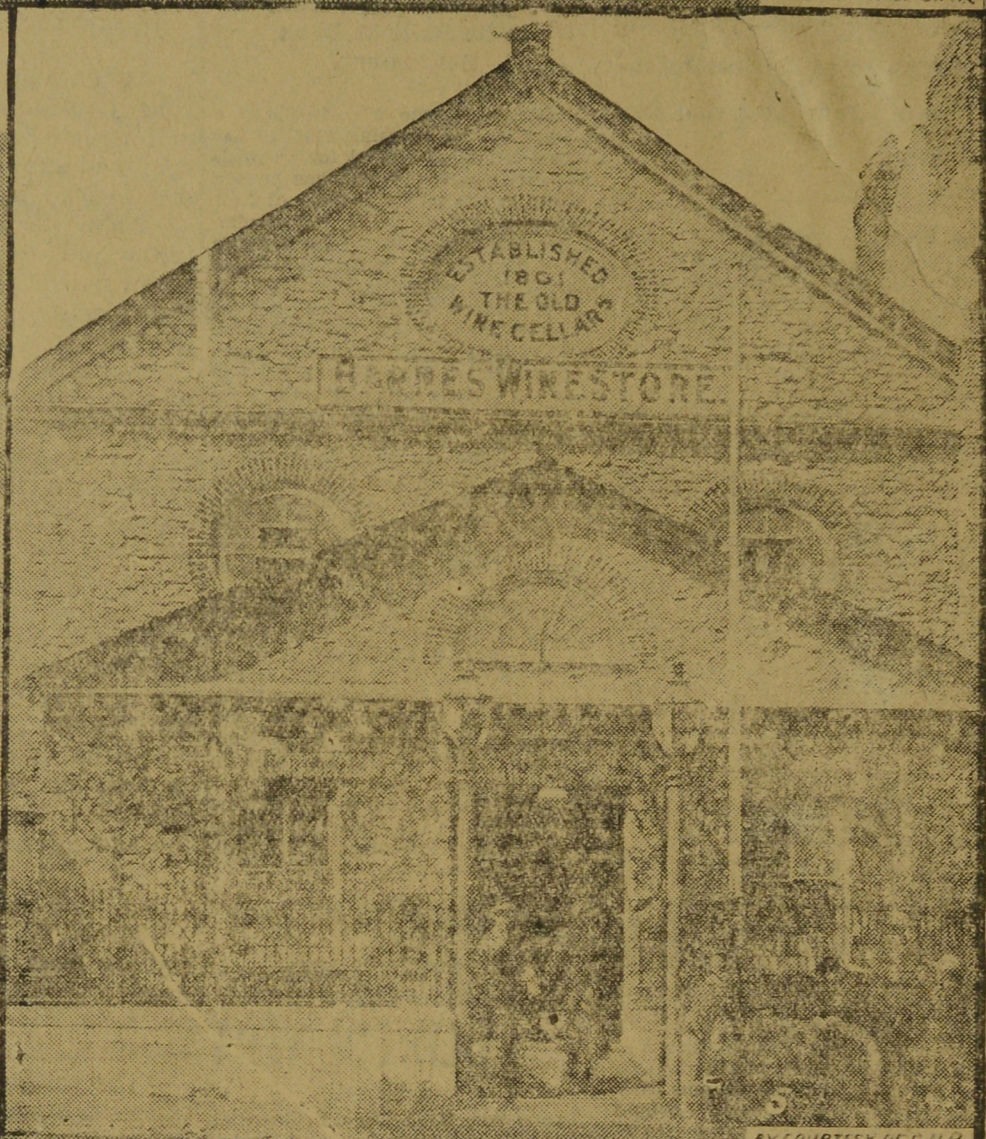
3

BY COURTESY OF C.P.R.



4

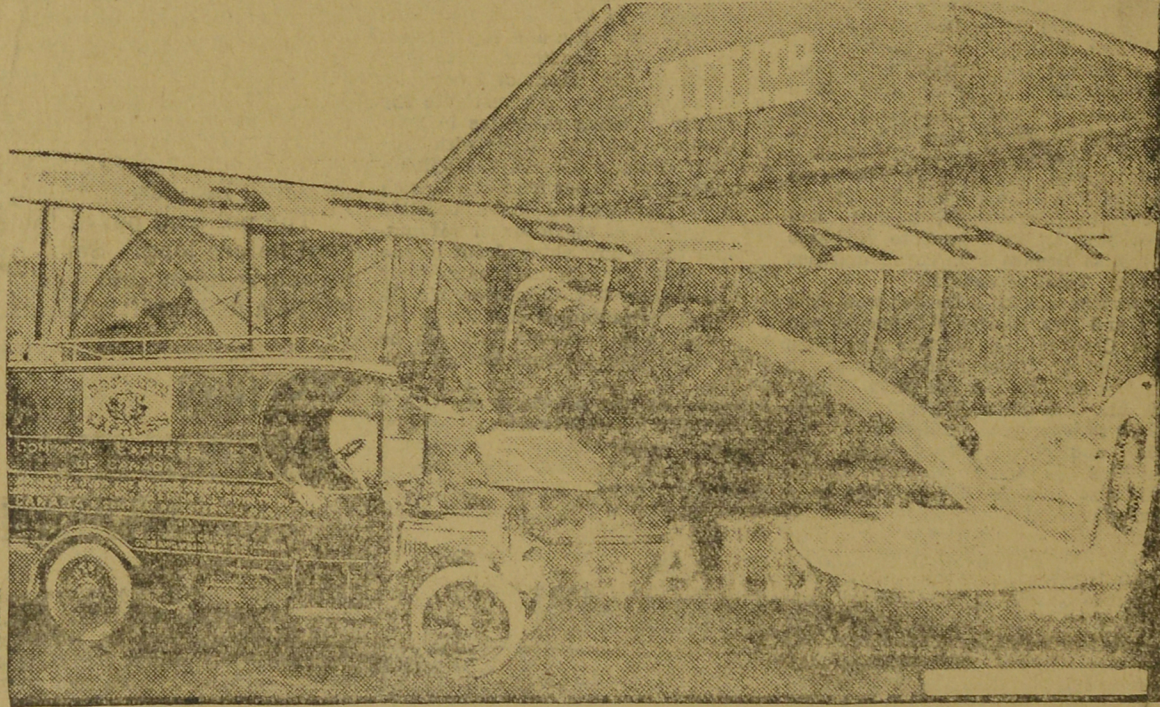
BY COURTESY OF C.P.R.



BY COURTESY OF C.P.R.

- (1) Group of the French Ladies' Football Team, who played in England against the Preston Team.
 (2) Oxfordshire Agricultural Show.—Parading the cattle.
 (3) Mysterious statuary on London's New County Hall on the south side of Westminster Bridge, by Mr. Ernest Cole. Speculation is rife as to the meaning of the sculptures.
 (4) Association Football Team leaves Southampton for Cape Town, South Africa. Mr. Crump (chairman of the Association), and Mr. Smith (Bolton Wanderers), entertaining the boys previous to their departure.
 (5) Beer in a Chapel.—This quaint old building at Devonport was originally built for the Unitarians, A. D. 1790. In 1801 the chapel was converted from spiritual to spiritual. The chaplain is still attached and performs certain duties.
 (6) The City Churches Commission appointed by the Bishop of London, proposes removing nineteen churches from the centre of the city. Many famous preachers occupied these pulpits. This picture shows St. Magnus the Martyr, London Bridge.
 (7) A lift to the underground trains. When the syren blows the lift starts. The object is to make passengers hustle.

LONDON TO PARIS AND AMSTERDAM BY AIR



Dominion Express Lorry and an Express Aeroplane.

Canadians visiting Europe recently have been pleasantly surprised to find that through the enterprise of the Dominion Express Company of Canada a new order of things exists as regards travelling from the Old Country to the Continent.

The Dominion Express of Canada, wishing to maintain its reputation for rapid services, has lost no time in negotiating for the addition of aeroplanes to the numerous other methods of quick transit it can place at the disposal of its patrons.

These negotiations resulted in an Agency for the Aircraft Transport and Travel, Limited, owners of the famous "Airco" machines, which accomplished a speed of well over 100 miles an hour. These machines ply between London and the Continent, and the Dominion Express offices scattered all over Europe are able to book passengers and parcels by aeroplanes and give any information that may be required on the subject.

Thus it is that Canadians who have come to Europe either on business or pleasure have found it the simplest matter out to arrange for a flying trip from London to Paris or Amsterdam or vice versa for themselves and their baggage. This they

have done through the Dominion Express Office nearest to the place at which they have been staying. There is a double aeroplane service daily to and from Paris and the Canadian visitor has leisurely breakfasted in London, taken a pleasant run out to the aerodrome by car, and arrived in Paris in good time for lunch. It is now a simple matter to avoid the troublesome changes of a journey by rail and steamer from England to the Continent, the bother of detrain, the miseries of sea sickness, the horrors of being worried by inquisitive Customs officials, while suffering from the after effects, and the anxiety of securing a good seat in the train for Paris. Such a nightmare is a thing of the past to those who avail themselves of the Aeroplane Services to the Continent through the offices of the Dominion Express.

The Airco machines actually start for Paris and Amsterdam from the Croydon Aerodrome; this is only a thirty minutes run by motor from town, and as the aeroplanes for Paris leave at 9.30 a.m. and 4.30 p.m. on week days, and 10 a.m. on Sundays, the intending passenger is

not called upon to commence his journey at some outrageously early hour of the day.

The machines for Amsterdam leave London at 10 a.m. on Mondays, Wednesdays and Fridays, arriving in Amsterdam at 2.00 p.m. the same day of course. From Amsterdam the start is made also at 10 a.m. but on Tuesdays, Thursdays and Saturdays.

There are, of course, many people who, whilst not having any special reason for a visit to the Continent, are equally anxious to make an aeroplane trip. For those so inclined, a flight over London can be arranged at one guinea per passenger or 1/6 per mile. This can easily be arranged by the Dominion Express Company which can also obtain aeroplanes for passengers desirous of securing the exclusive use of machines for the purpose of flying to any part of Europe.

Parcels and Freight are also handled with equal expedition by the Dominion Express to or from the Continent by aeroplane, and should passengers or consignors of parcels wish to effect Life or Freight Insurance, the Dominion Express can arrange the issue of the Policy at a very moderate premium.



BY COURTESY OF C.P.R.

BY COURTESY OF C.P.R.