



1

BY COURTESY OF C.P.R.



2

BY COURTESY OF C.P.R.



3

BY COURTESY OF C.P.R.

(1) His Majesty King George shakes hands with the players at Hospital Cup Finals, Guy's vs. Bart, at Richmond.

(2) Mr. J. Barcroft, a Cambridge Don, trying his wonderful invention regarding the effect of high altitude on airmen. He was for 6 days in a hermetically sealed glass case, into which oxygen and nitrogen were pumped. The tube he held in his mouth, and he worked a specially constructed bicycle for exercise.

(3) Carpentier, the famous French boxer, and his bride, Miss Georgette Elsasser, taken in Paris just before leaving for New York.

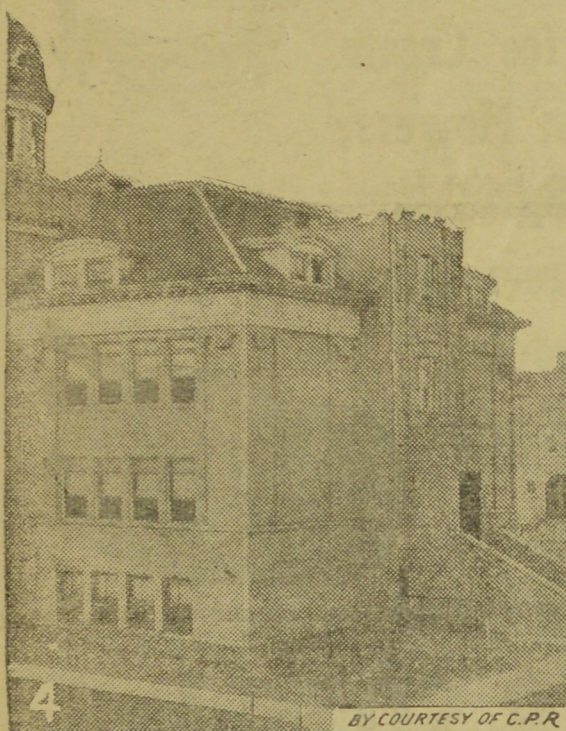
(4) One of Saskatoon's fine public schools.

(5) Saskatoon's first school, now rebuilt for preservation as an antiquity on the campus of the University.

(6) The students at a popular wedding in Dublin made a rag of the occasion and wild scenes were witnessed. This is the German gun that was tied behind the bridal motor.

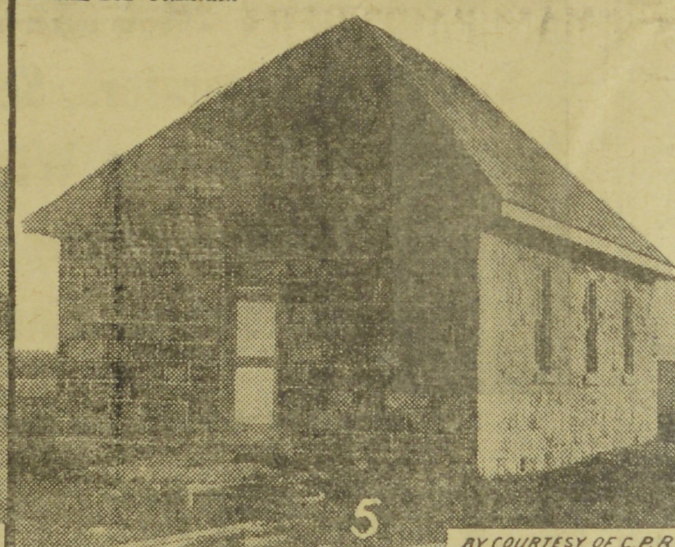
(7) First picture to arrive of the last word in under-sea-craft. The British submersible battleship "M.3."

(8) Some 200 boys and girls from Dr. Barnado's Home, leaving England on the C. P. O. S. liner Sicilian, for Canada.



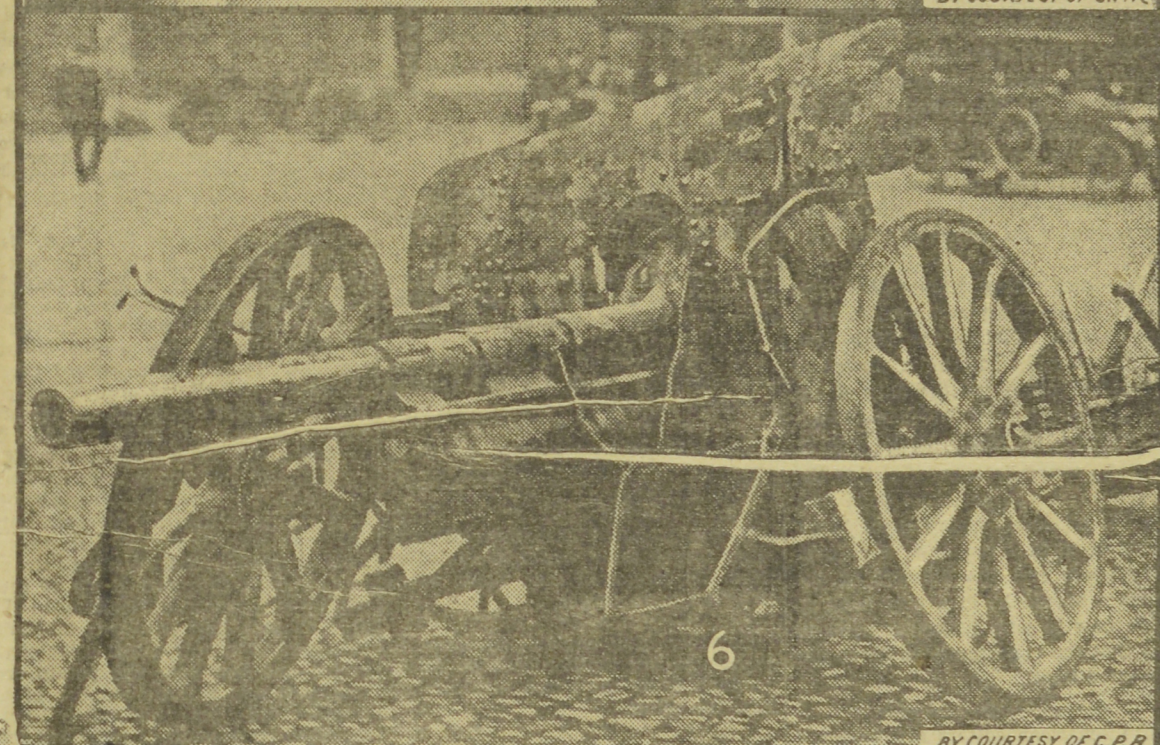
4

BY COURTESY OF C.P.R.



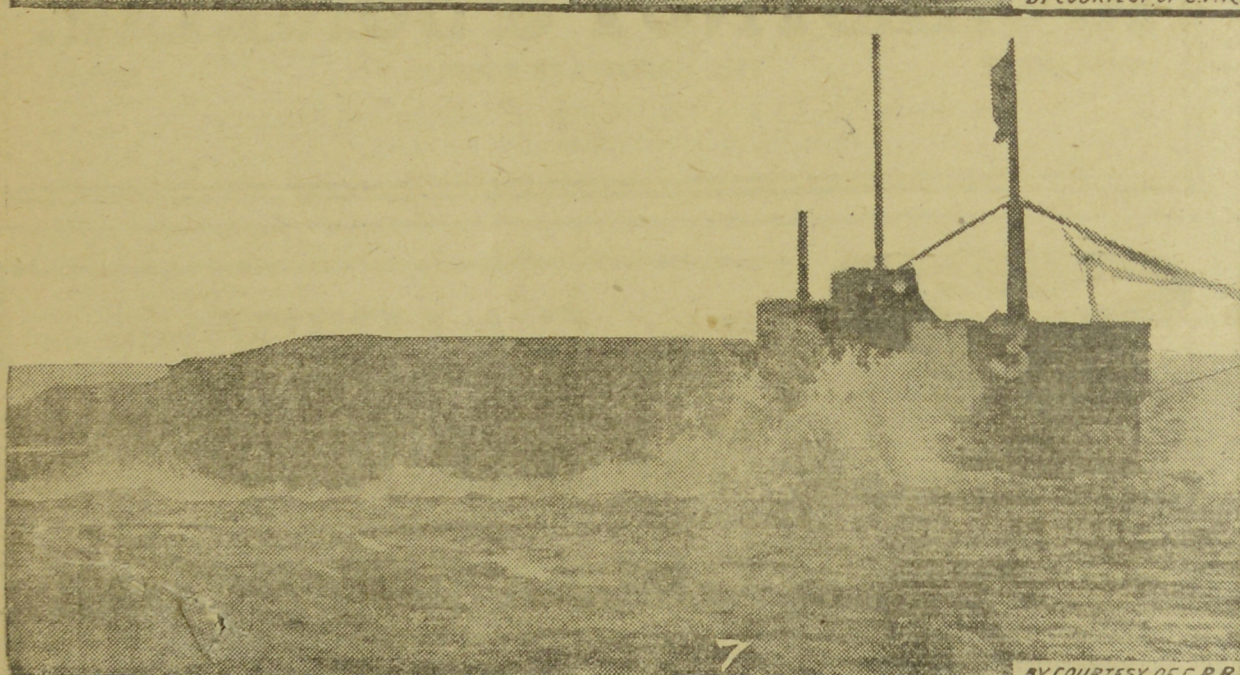
5

BY COURTESY OF C.P.R.



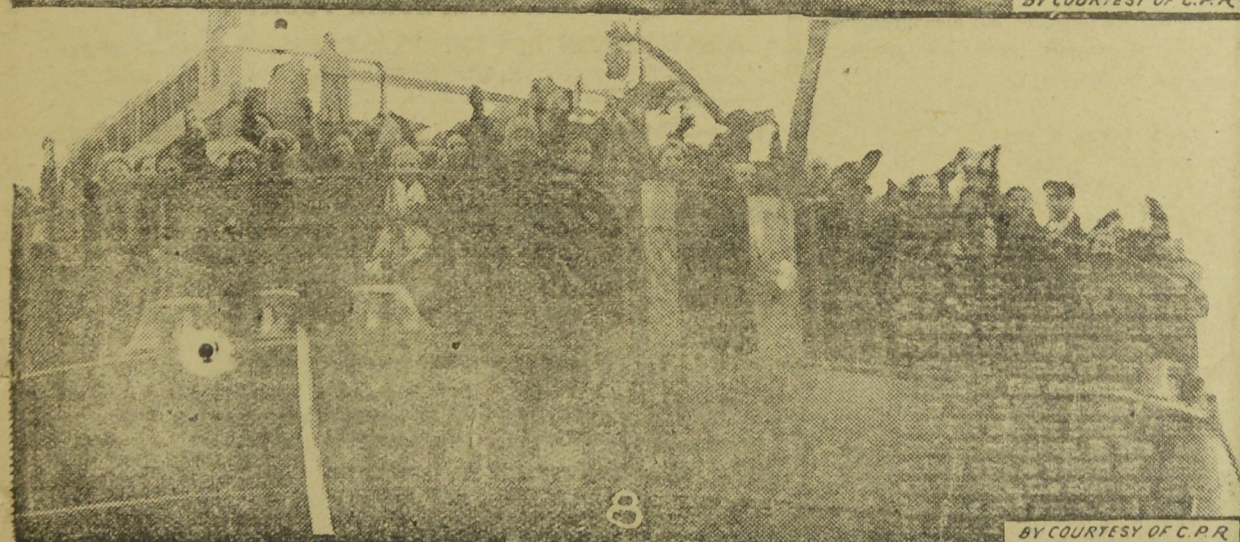
6

BY COURTESY OF C.P.R.



7

BY COURTESY OF C.P.R.



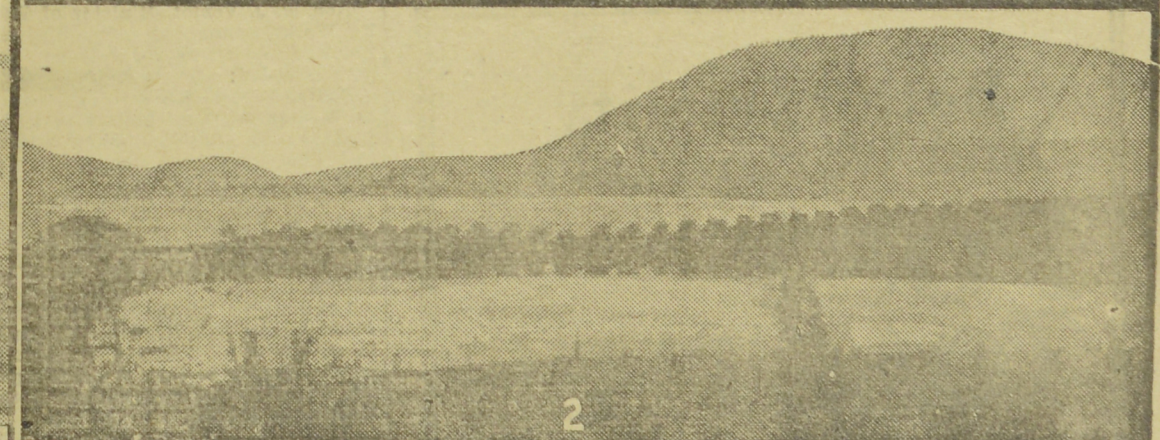
8

BY COURTESY OF C.P.R.

Salmon Arm the Garden of B.C.



1



2

(1) View of Salmon Arm, Shuswap Lake.

(2) View of McGuire's Lake on McGuire Ranch, Salmon Arm.

Salmon Arm, on the beautiful Shuswap lake, 1,300 feet above sea-level, in South-central British Columbia, is the centre of a region so fertile that is known as the "Garden of B.C." Situated at a point where the Salmon river empties into the Salmon Arm of Shuswap lake and on the main line of the C.P.R., 315 miles east of Vancouver, it has excellent facilities for shipping and travelling. The resources of this favored district are many, unsurpassed richness of soil, with its resulting enormous crops, genial healthful climate, with abundant rainfall and mild summers and winters. It is the "hearts' desire" to the man who wishes to devote particular attention to fruit growing, market gardening, dairying or poultry raising.

The town of Salmon Arm is the business centre of the Salmon Arm valleys, with their great diversity of soil, which makes a strong appeal to the farmer. In these rich pastures, dairying is promoted on an extensive scale while corn root crops and celery are grown. The upper bench lands are especially suited to fruit culture and excel in certain varieties of apples, the "wealthy" and "Northern Spy" having extensive culture. Salmon Arm provides, always the inspiring and ennobling influence of nature at her best, with hill, valley, woodland, lake and river. The undulating nature of the land, adjacent to the lake, secures some lovely home-sites and the inspired pen were needed to describe the

beauty of the gorgeous panorama ever before the dwellers in this peaceful spot. The broad lake mirrors gently swelling mountains that march on to a purple mist, while to the rear are verdant orchard covered slopes, park-like in the beauty of their setting, Mount Ida towering in the near distance. Do not miss a view of the sunset on the Shuswap when lake and forest are flooded with gold and rose or when the young moon hangs low over the lake, shooting bars of silver across the placid waters and the glories of earth and sky are reflected in the shimmering expanse. A steamer will operate on the lake during the coming season, giving passenger and freight service as far east as Sicamous.

C. G.