

## Custom Tailoring

The New Importations for the Coming Season are now on display. An early inspection will assure you of a large and varied selection to choose from.

We are also prepared to fill all orders entrusted to us for MILITARY CLOTHING at reasonable price. We are sole agents for the Crown Tailoring Company, of Toronto, the largest Military Tailoring Company in Canada.

**WALKER BROS. TAILORS**  
QUEEN STREET, WEST END



**WANTED!**  
**30,000 HARVESTERS**  
Fare Fredericton to Winnipeg \$20.25  
To points west of Winnipeg fare will be one-half cent per mile from Winnipeg.

Special accommodation for Women. New, comfortable colonist cars of latest design. Through Service. Box Lunches.

EXCURSION DATES from FREDERICTON  
August 6th and 13th, 1920

FARE RETURNING—One-half cent per mile up to Winnipeg, plus \$25.00. Winnipeg to Fredericton, war tax extra.  
For particulars apply to nearest ticket agent  
F. W. ROBERTSON, Gen. Pass. Agt.

## Canadian National Railways

### Picnic and Outing Supplies

THERMOS BOTTLES, LIME JUICE, STRAWBERRY VINEGAR, GRAPE JUICE, PAPER PICNIC PLATES.

**WILEY'S PHARMACY**  
York Street

## WASHINGTON'S

Fredericton's Oldest and most modern high class cafe.

The Broiled Live Lobster season is here again, and you can get them at Washington's.

Patronize our Lunch Counter.

Dinner served from 12 to 2 o'clock. See our window display.

**YORK STREET**



MAIL CONTRACT

SEALED TENDERS addressed to the Postmaster General, will be received at Ottawa until noon on Friday, the 10th September, 1920, for the conveyance of His Majesty's Mails on a proposed Contract for four years, 6 times per week, on the Ruisagornis Station Rural Route, No. 1, from the 1st January next.

Printed notices containing further information as to conditions of proposed contract may be seen and blank forms of tender may be obtained at the Post Offices of Ruisagornis Station and Ruisagornis and at the office of the Post Office Inspector.

H. W. WOODS,  
Post Office Inspector.  
Post Office Inspector's Office,  
St. John, N. B., July 29, 1920.

## HEADQUARTERS

for CUT FLOWERS, ROSES, VIO.

LETS, CARNATIONS, SWEET PEAS, etc.

Also a very fine variety in POTTED PLANTS, Ferns, Palms, Azaleas, Roses Ramblers, Cyclamens, Primulas, Hyacinths, Dacodils, Tulips, Spireas, Easter Lilies and floral baskets.

Say it with flowers.  
Lettuce.

**ADA M. SCHLEYER,**  
Phone 271.

## COTTON MILL HELP WANTED.

We have openings for families of Cotton Mill help.

Cheap rent, good living conditions, good school, handy churches.

Apply in person or by letter to  
THE GIBSON COTTON MILL,  
Marysville, N. B.

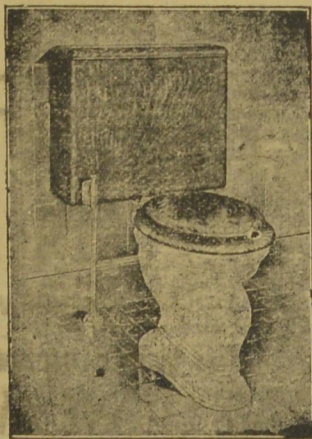
## DEVON SCHOOL NOTICE

Devon parents please take notice that a certificate of successful vaccination must be presented for all new permits granted.

You are also advised to examine the children's medical cards.  
School reopens Thursday, August 26, 1920.

F. L. MAWER,  
Sec. School Trustees, Devon.

## THE TRUMP OF DOOM



WILL SOUND NO LOUDER than that old, wornout closet does to the startled ears of your guest who uses your bathroom.

END THIS EMBARRASSMENT for your family and your guest.

A SI-WEL-CLO—SILENT WATER CLOSET—will do this at a cost which is small when compared to the satisfaction and comfort it brings.

**SHEA'S PLUMBING SHOP**  
81 CARLETON ST.

## FREDERICTON TO QUEBEC BY THE CANADIAN NATIONAL

The Ancient Capital Can Now be Reached in a Night's Run from Fredericton—Some Points of Interest Along the New Transcontinental—A Splendid Train Service Which is Becoming Popular With Travellers.

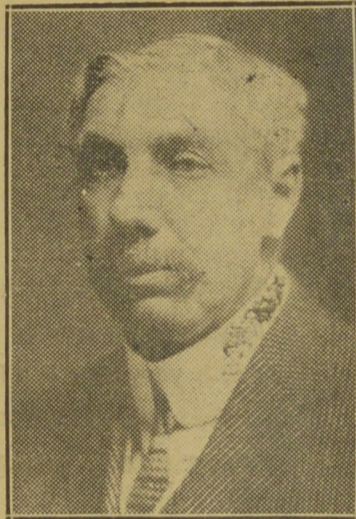
Fredericton people—and the number is steadily growing—who have travelled from this city to Quebec by the new Transcontinental Railway, now operated as part of the C. N. R. system, speak in glowing terms not only of the scenic attractions of the trip, but of the splendid train service which is provided. Prior to the month of June of this year there was only a tri-weekly service over this route, but the substantial growth of traffic made a daily service imperative, and the C. N. R. authorities were not slow to provide it. A daily service has also been provided for the Valley Railway between St. John and Centerville and is a source of great convenience to the people of Central New Brunswick. To the regular express which leaves St. John daily at two o'clock p. m. is attached a buffet parlor car, which on arrival in this city is switched to the Canada Eastern branch and attached to the express which leaves for North Shore points at 6.25 p. m. The C. N. R. has the distinction of being the first line to give the citizens of the celestial city a Pullman service and on the principle that one good turn deserves another this fact ought not to be overlooked by those who have occasion to travel to the upper provinces. Boarding the Pullman at Fredericton in the evening a run of less than two hours lands the traveller at McGivney Junction where the car is speedily transferred to the N. T. R. line which is generally conceded to have the finest

ten years ago it boasted of but one human habitation, which had for occupants the resident engineer and his blushing bride. The other outstanding features were a lake where moose could be seen at almost any hour, on a warm day, a water tank and a shanty used by the men employed on construction work. Today it is a burgh with a population of some two hundred souls with good prospects of further growth as railway traffic develops. Napudogan lake, from which the places derives its name, is close to the station, so close, in fact, part of the lake had to be filled in in order to provide ground for the railway yard. A mile or two further along on the right hand side of the track is located the Miramichi lake. It is a beautiful sheet of water, and is nearly surrounded by a hard sand beach. It is an ideal spot for summer camps and the day is not far distant when pleasure seekers who like a quiet place away from the haunts of men, will be finding it out. The lake is drained into the Southwest Miramichi by a good sized stream easily navigable for canoes, and the fact that the outlet is not far from the best salmon pools on that noted stream, lends to the place an added attraction from the sportsman tourist's viewpoint.

### Great Hunting Ground

It was in the region of the Miramichi Lake that Uncle Henry Braithwaite, the veteran guide, established his first sportsmen's camp, for big game hunting, and it was here that he guided the first English and American sportsmen to visit the province. It was here also that the old gentleman began his long and successful career as a trapper, afterwards shifting his

(Continued on Page Six)

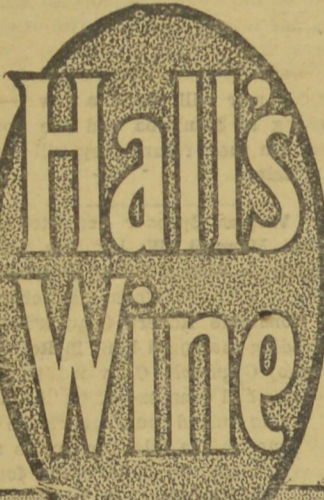


MR. D. B. HANNA  
President of the C. N. R.

roadbed on the continent of America. In a little while you are speeding through the great forests of the Miramichi, but so smoothly does the train glide along that it is not until a strange conductor appears on the scene, nudges you on the arm and asks for a ticket, that you wake up to the fact that the train is really in motion. The first stop after leaving McGivney is at Maple Grove, a settlement in the Parish of Stanley which is quite a lumbering and agricultural centre. A nice railway station which is also the dwelling house of the man in charge, and a large warehouse belonging to the Miramichi Lumber Company are the only buildings in sight. This is the point of departure for one of the best big game regions of the Southwest Miramichi, and is visited annually by many American sportsmen who hunt under the guidance of the Griffins of Cross Creek. It is also the jumping off place for lumbermen who operate on the Southwest Miramichi and Taxis Rivers, and other near by streams. In the old days, lumbermen who operate on the upper stretches of the Foresten, used to take their crews to Foresten, Carleton County by way of Fredericton, but now the trains on the N. T. R. carry the men and supplies almost to the camp doors.

### A Divisional Point

Napudogan, the first divisional point, after leaving Moncton, is twelve miles northwest of Maple Grove. Those who were privileged to visit this place when the N. T. R. was under construction would be surprised at the transformation which has since been brought about. It has a large railway station with lunch room attached, many miles of sidings an up to date water system, a round house and repair shops, all substantially built structures, and a large number of neat dwelling houses which are occupied by the railway employees. When the writer last visited the place



### The Supreme Tonic Restorative

Each bottle of Hall's Wine contains liquid nourishment sufficient to maintain the human system for several days without food.

Taken with ordinary meals, its marvellous restorative principles are evident in the restoration and invigoration so essential in convalescence.

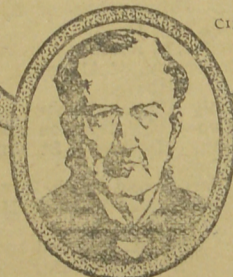
### Hall's Wine

never fails—it is the safeguard against colds, coughs—the great restorative after influenza and other ailments. Doctors recommend Hall's Wine.

Guarantee—Buy a bottle of Hall's Wine to-day. If, after taking half of it, you feel no benefit, return us the half-empty bottle and we will refund your outlay.

Extra Large Size Bottle \$2.25

Proprietors  
STEPHEN SMITH & CO.  
Limited  
Bow, London, England  
Sole Canadian Agents  
FRANK L. BENEDICT & CO.,  
45 St. Alexander St., Montreal



## Department of Health, N. B.

### VACCINATION OF EMPLOYES

THE FOLLOWING IS PUBLISHED FOR THE INFORMATION OF THE PUBLIC, GENERALLY, AND ESPECIALLY OF THOSE DIRECTLY CONCERNED

"1. Section 30 of The Public Health Act, 1918," being 8 George V. Chapter 36, is hereby amended by adding after the last paragraph thereof the following paragraph:

No person shall be employed in any camp, ship, factory or other place wherein the employees come at frequent intervals into close and prolonged contact one with another, unless and until such person produces to the employer or the employer's representative a certificate signed by a regularly qualified medical practitioner, of successful vaccination, or a like signed certificate that he is immune to vaccination as proven by three consecutive non-successful vaccinations, or that he is immune to small-pox by reason of having had the disease, and no employer shall employ any person in employment as set forth above, without such certificate being produced. When any person contracts small-pox, who is at the time of the inception of his sickness employed as set out in this section, or who was so employed within fourteen days prior to the inception of his sickness and who has not complied or been required to comply by said employer of employer's representative with the foregoing provisions prior to his employment, then in such case the employer shall be primarily liable to pay all such costs, charges and expenses as the sub-district Board of Health concerned may have incurred in necessarily protecting the public health; provided such charges, costs and expenses were incurred in or about the necessary precautions relative to, or immediately appertaining to, any such case of small-pox, and such costs, charges and expense may be sued for and recovered with costs, in the name of the Chairman of the sub-district Board incurring the same, in any court of competent jurisdiction, within six months of the recovery or death of any such person. Such liability shall be in addition and without prejudice to any liability for any penalty provided for any violation of the provisions of this Act.

The terms and conditions of this section shall not become operative until the first day of July A. D. 1920."

DEPARTMENT OF HEALTH, N. B.

Fredericton, N. B. June 12, 1920.  
(1st publication, June 12th, 1920)

## WHAT

Would be more appropriate for your boy now than an  
**IVANHOE BICYCLE**

The IVANHOE is built like a watch and runs just as smooth.

We have them in all sizes.

**A. W. BLACKMER**

'Phone 118-11

96 Regent Street

## JUST A HINT

There's nothing so enjoyable, after all, as a bicycle ride through the country, and then, too, it combines exercise with pleasure, providing you have the right kind of a wheel—and you'll have the right kind if you buy

## THE CLEVELAND

We carry a complete line. Call and see them.

**WILLIAM MINTO, 306 Queen Street**

## MOIRS CHOCOLATES

AT 75c. PER LB., 40c. PER 1/2 LB.

Good Goods at a lower Price.

PIPES, CIGARS, TOBACCO and CIGARETTES.

**D. H. CROWLEY**

'Phone 145-31.

One door above Lemont & Sons

## DEERING

Harvesting and Haying Machines

Now is the time to select your harvesting and haying machines and your attention is directed to the well known Deering Line of machinery as follows:

DEERING MOWER, 4, 5, 6, 7 ft. cut, vert. lift.  
DEERING RAKES, 8, 9, 10, 12 ft. lengths, self dump.  
DEERING REAPERS, 5 ft. cut.  
DEERING BINDERS 5 and 6 ft. cut.  
HAY TEDDERS, 6 and 8 fork.  
DEERING HAY LOADERS  
DEERING SIDE DELIVERY RAKES.

REPAIR SERVICES—Our Deering Repairs have just arrived and we are in a position to replace any broken parts promptly.

Buy Deering Harvesting Machinery and be Protected by prompt repair service.

**J. CLARK & SON, Limited**  
FREDERICTON, N. B., and BRANCHES.