

## DISCOUNT FACILITIES

This Bank is prepared to make advances to individuals, partnerships and companies against approved trade paper on favorable terms.

Do not hesitate to discuss with us the requirements of your business.

## THE CANADIAN BANK OF COMMERCE

PAID-UP CAPITAL \$15,000,000  
RESERVE FUND \$15,000,000  
FREDERICTON BRANCH, W. T. Gerald, Manager.

## BISHOP BARRY PASSES AWAY AT CHATHAM

Chatham, Jan. 18.—After a long life of great usefulness in the Catholic church, the Rt. Rev. Thomas Francis Barry, Bishop of Chatham, died at 1.30 yesterday afternoon of pneumonia.

Bishop Barry had been in ill health for several years and his friends did not hope for his recovery from this last attack. He had been nearly at death's door several times during the last few years, and it seemed as if the strong desire to celebrate the first mass in the new Cathedral that he was

building was the motive which kept him from yielding up the ghost.

His lordship was of Irish parentage and was born at Pokemouche, Gloucester county, on March 3, 1841. He was ordained priest at Montreal, on Aug. 5, 1886, and consecrated Bishop with Archbishop Casey, formerly of St. John and now of Vancouver, on February 16, 1900. He was first consecrated Bishop of Thugga and coadjutor with right of succession to the Chatham See, and later, on Aug. 2nd, 1902, upon the resignation of the Rt. Rev. James Rogers, D. D., the first Bishop of Chatham, he was appointed to that bishopric.

For many years Bishop Barry was parish priest of Bathurst and erected a handsome church and presbytery there, whist vicar genera.

## LUNATIC RUNS AMUCK WITH AXE AND KILLS FOUR

**Terrible Tragedy Reported From Connecticut Village—Finnish Farmer Killed Four Persons and Fatally Injured Another—Wound Up His Series of Crimes by Committing Suicide—Victims Were His Neighbors.**

Brooklyn, Conn., Jan. 19.—Victor Lipponenn, thirty-eight years old, a farmer of Finnish birth, went insane today and with an axe killed four persons, probably fatally injured one other severely wounded his wife and failed in attempts to kill three others. He hanged himself, and two deputy sheriffs following him found the body warm, so close were they on the trail.

The dead are:

Christion G. Ritter, aged 46, a neighbor.

Mrs. Selmia Luonia, wife of another neighbor, who had nursed Mrs. Lipponenn in maternity.

Baby Lipponenn, four days old.

Miss Elsie Rose Kimber, nine-year-old.

The injured are:

Mrs. Charles Ray, mother of Miss Kimber, whose head was cut and is not expected to live.

Mrs. Lipponenn, 28, grazed by the axe and suffering from exposure due to a run through the snow to a neighbor's house.

The story of the multiple tragedy as

brought out by Coroner Arthur G. Hill, of Danielson, revealed this to be one of the worst in the criminal annals of the state. Lipponenn, farming in a small way in the western part of the town, had worked out for various farmers in the community. None recall that he had shown any signs of mental disorder.

This morning Lipponenn walked into his house with an axe and struck at his wife, who was in bed. She was merely grazed as she rolled from the bed in an effort to escape. The man swung directly about and drove the axe into the head of Mrs. Luonia, a neighbor, who had been nursing Mrs. Lipponenn. She turned as if to protect the infant and crushed it under her as she fell, the baby dying.

Lipponenn went to the barn and with the axe tried to split open the heads of four cows. Then he hitched up his bobsled and drove to the home of Ritter, one third of a mile away. The latter came outside and greeted Lipponenn. With Ritter were his daughter Cecelia, fourteen, and his son Stephen, twelve. Lipponenn opened conversation about trading horses. Suddenly he reached in the sleigh, took the axe and with one blow split open Ritter's head. He also hacked the body several times. The children fled.

Lipponenn drove west to the house of Charles Ray. Ray was not home. Lipponenn entered with a cheery "good morning." Mrs. Ray replied and the man swung the axe to her head without warning. Miss Kimber, a daughter by a former marriage, rushed toward her mother. Lipponenn struck her head with the axe, and followed it with a blow that almost severed her left arm. Charles Ray jr., eleven, escaped through a door. Lipponenn went to the door and set it on fire. It was totally burned with its contents, including live stock.

Lipponenn drove on, turning into a side road a half mile to the right and ended his life by hanging.

### A TONIC FOR THE NERVES

**The Only Real Nerve Tonic is a Good Supply of Rich, Red Blood.**

"If people would only attend to their blood, instead of worrying themselves ill," said an eminent nerve specialist, "we doctors would not see our consulting rooms crowded with nervous wrecks. More people suffer from worry than anything else."

The sort of thing which the specialist spoke of is the nervous run-down condition caused by overwork and the many anxieties of today. Sufferers find themselves tired, morose, low-spirited and unable to keep their minds on anything. Any sudden noise hurts like a blow. They are full of groundless fears, and do not sleep well at night. Headaches, neuritis and other nerve pains are part of the misery, and it all comes from starved nerves.

Doctoring the nerves with poisonous sedatives is a terrible mistake. The only real nerve tonic is a good supply of rich, red blood. Therefore to cure nervousness and run-down health Dr. Williams' Pink Pills should be taken. These pills actually make new, rich blood, which strengthens the nerves, improves the appetite, gives new strength and spirits, and makes hitherto despondent people bright and cheerful. If you are at all "out of sorts" you should begin curing yourself today by taking Dr. Williams' Pink Pills.

You can get these pills through any dealer in medicine, or by mail at 50 cents a box or six boxes for \$2.50, from The Dr. Williams' Medicine Co., Brickville, Ont.

### SHORT ON GRANDMOTHERS.

Little Alice looked thoughtfully at a spinster friend of her mother's who had just requested Alice to call her "Auntie."

Said Alice: "But you know I have plenty of aunts and lots of uncles. I am short on grandmothers. Couldn't you be a grandmother to me?"

### NO HEARSAY OR GOSSIP.

Miss Stenning will give interesting first hand information at the Winter Chapel on Wednesday evening.—Kingston, Ont., Whig

## FREDERICTON FIRE ALARM

- 6 Shoe factory
- 12 Corner Westmorland and Aberdeen Streets.
- 12 Corner Northumberland and Sanders Streets.
- 14 Corner Brunswick and Smythe Streets.
- 16 Corner Charlotte and Smythe Streets.
- 16 Corner George and Northumberland Streets.
- 17 Corner King and Northumberland Streets.
- 21 City Hall.
- 23 Corner York and George Streets.
- 24 Corner Queen and Westmorland Streets.
- 26 Corner Brunswick and Westmorland Streets.
- 26 Corner Charlotte and Westmorland Streets.
- 27 Corner King and York Streets.
- 28 Corner Saunders and York Streets.
- 31 Corner Queen and Regent Streets.
- 32 Corner Needham and Regent Streets.
- 34 Corner Queen and Carleton Streets.
- 35 Corner Brunswick and Carleton Streets.
- 36 Corner Charlotte and Carleton Streets.
- 37 Corner George and Regent Streets.
- 38 Corner King and Regent Streets.
- 44 Corner Queen and St. John Streets.
- 45 Corner Brunswick and St. John Streets.
- 16 Corner Charlotte and St. John Streets.
- 51 Corner King and Church Streets.
- 52 Corner George and Church Streets.
- 53 Corner Union and Church Streets.
- 54 Gas House.
- 55 Intercolonial Railway Station.
- 56 Lansdowne and Waterloo Row.

Nance O'Neill would have liked to arrange travel tours.

Robert Edeson is a physical culture specialist outside of studio hours.

Alice Joyce thinks she would have made a successful architect.

### NEWS AGENTS IN CITY.

THE DAILY MAIL IS ON SALE in the City of Fredericton at the places of business of the following:

- D. LENIHAN, 522 King St.
- D. H. CROWLEY, 512 Queen St.
- ALONZO STAPLES, 100 York St.
- MISS QUINN, 147 Westmorland St.
- E. A. EARDLEY, 704 King St.

## CASTORIA

For Infants and Children  
In Use For Over 30 Years

Always bears the Signature of *Chas. H. Fletcher*



MAIL CONTRACT

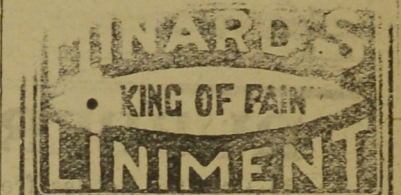
SEALED TENDERS addressed to the Postmaster General, will be received at Ottawa until noon on FRIDAY, 6th February, 1920, for the conveyance of His Majesty's Mails on a proposed contract for four years, three times per week on the Kingsclear Rural Route No. 1, commencing at the pleasure of the Postmaster General.

Printed notices containing further information as to conditions of proposed Contract may be obtained at the post office of Kingsclear and at the office of the Post Office Inspector.

H. Y. WOODS,

Post Office Inspector.  
Post Office Inspector's Office,  
St. John, N. B., Dec. 26th, 1919.

**Wood's Peppermint Cure.**  
The Great English Remedy. Tones and invigorates the whole nervous system, makes new blood in old veins, cures Nervous Debility, Mental and Brain Worry, Lethargy, Loss of Energy, Palpitation of the Heart, Failing Memory. Price 21 per box, six for \$5. Sold by all druggists or mail order per post on receipt of price. Non-promptly mailed free. THE WOOD MEDICINE CO., TORONTO, ONT. (Canada, U.S.A.)



I was cured of terrible lumbago by

**Minard's Liniment**

—Rev. Wm. Brown.

I was cured of a bad case of earache by

**Minard's Liniment**

—Mr. S. Kaulbach.

I was cured of sensitive lungs by

**Minard's Liniment**

—Mrs. S. Masters

Manufactured by the  
**Minard's Liniment**  
Yarmouth, N.S.

## NEW C.P.O.S. LINERS



THE part played by the Canadian Pacific Ocean Services in the great European war will make a big chapter in Canadian history. Undoubtedly the sea supremacy of Great Britain was one of the most potent factors in the winning of the victory which was obtained, and the ships of the C. P. O. S. took a big part in making Great Britain supreme at sea. There are few branches of sea service in which they did not take a part. Mounted with guns some of them were where there was fighting to be done.

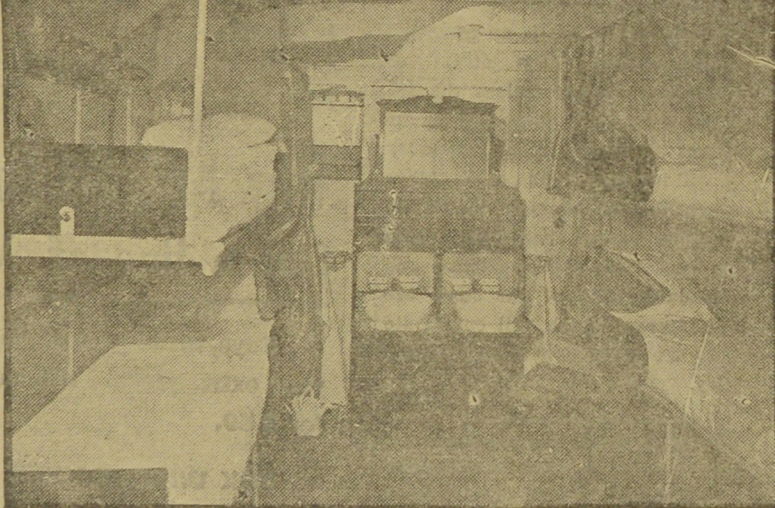
Over 4,000,000 tons of cargo and munitions of war have been carried in addition to many thousand horses and mules.

The C. P. O. S. have carried from the outbreak of hostilities to October 31st, 1918, 1,041,000 troops and passengers all over the world, embracing ports in China and Japan, Singapore, Bombay, Mesopotamia, Suez, Gallipoli, ports in the Mediterranean, Colombo, Dares-Salaam, Delagoa Bay, Durban, and Mauritius, in addition to the west coast of North and South America, and the United States and Canadian ports. The total loss of troops carried caused by enemy action and irrespective of disease has been eight in number. On one consecutive continuous voyage one of the company's vessels steamed 28,441 miles.

Over 300 officers and engineers were found out of the company's service for the Royal Navy. Lieut. R. N. Stuart, one of these, has won the D.S.O. and the V.C., while many others have received decorations and been mentioned in despatches.

The *Mississauga*, a C. P. O. S. steamer, was the first big vessel to sail on her maiden voyage from Great Britain to Canada after the outbreak of the war in 1914, a sister ship, the *Metagama*, sailed on her maiden voyage from Liverpool, March 26th, 1915. These two splendid ships have been followed by two larger ships, the *Mellita*, which sailed from Liverpool Jan. 20th, 1918, and her sister ship, the *Minnedosa*, on her maiden trip from Liverpool Dec. 5th, 1918 to St. John—the first steamer to sail since hostilities ended. The *Minnedosa* is a splendid acquisition to the already large fleet of C. P. O. S. vessels. She has a gross tonnage of 14,000, length 344 feet, width 67 feet, depth 45 feet and a total cargo capacity of 483,000 cubic feet.

There is accommodation for ap-



proximately 500 cabin and 1450 third class passengers. The Gymnasium on "A" Deck (or Boat Deck) is fitted with the latest mechanical devices for exercise and amusement. On "B" Deck (or Upper Promenade Deck) are located the Cabin Smoking Room, Cabin Drawing Room and Cabin Lounge.

The Entrance Hall from the extensive Promenade Deck with its paneling, mirrors and staircase is an attractive approach to the Dining Saloon.

The Spacious Lounge with its charming old English fireplace and large windows is fitted with comfortable paneling. It is most comfortably furnished and hung with beautiful old English prints of the 18th century and some rare old red lacquer mirrors.

The Drawing Room, panelled with most beautiful Australian Black Bean Wood in the Queen Anne style, has an air of coziness not often found on board ship. The beautiful colored prints which adorn this room are from the famous panels painted in 1780 by Fragonard for Madame du Barry and purchased by the late Pierpont Morgan. A writing recess is also to be found in this room.

The Smoking Room is paneled in old oak of the Jacobean style, its fine old chimney piece and sporting prints being noteworthy features.

A small number of two-berth staterooms are provided on this deck.

On Deck "C" (or Lower Promenade Deck) is to be found the Bureau and Ticket Office. A special feature is the spacious square and gallery round the well over the Dining Saloon. A good number of well appointed, airy and commodious staterooms are provided amidships for cabin passengers containing three and four berths. At the forward end an entrance for third class passengers is provided.

On "D" Deck is situated the Dining Room, which extends the whole breadth of the ship and has seating accommodation for 300 persons, placed at small and large tables. It is tastefully decorated in the Georgian style, a special feature being the open staircase. There is accommodation for 60 cabin passengers on this deck in four berth staterooms.

At the extreme after end of "D" Deck, the Third Class Smoking and also Third Class Ladies' Room is to be found, whilst at the forward end there is a Third Class Dining Saloon, with seating capacity for 140 persons, another Smoking Room and also a General Room. The Main Third Class Dining Saloon, seating over 400, is also on this deck.

On the starboard side of Deck "E" are a number of Cabin Staterooms containing two and four berths, whilst another Third Class Dining Saloon, with a seating capacity for 122 persons, is situated in the after end of the ship.

The *Mississauga* was torpedoed and sunk by a German submarine in 1914.