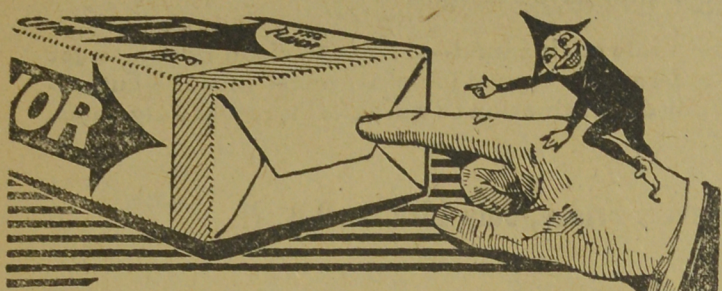


AFTER EVERY MEAL WRIGLEY'S



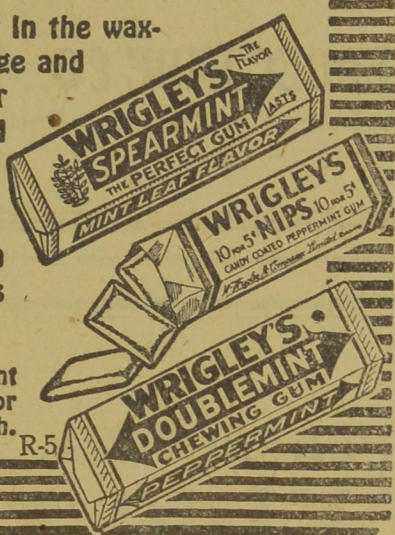
Sealed for You
Wrigley's is made of pure chicle and other ingredients of highest quality obtainable.

But it is no use to make WRIGLEY'S 100% in quality and then reach you in poor condition.

So we put it in the wax-wrapped package and SEALED IT TIGHT to keep it good—for you.

Aids digestion—keeps teeth white—helps appetite.

Wrigley's Doublemint is peppermint flavor in double strength.



A girl from a telephone exchange fell asleep while at church. The preacher announcing the hymn said: "Number 428." At that moment the girl awoke. "I'll ring 'em again" she murmured.

Try Our ICE CREAM

ONLY 50 CENTS A QUART

WE ARE HEADQUARTERS FOR TEMPERANCE DRINKS.
TRY OUR OLD ENGLISH GINGER BEER.

STRICTLY FRESH EGGS from my own Henneries
Fred. H. Ferguson
Corner Northumberland and Brunswick Streets.

Trap Nests

If you are in the poultry business go at it systematically. Keep tabs on your hens by trap nesting them. It's the only way to pick out the boards.

I make a complete set of four nests for only \$4.00. Satisfaction guaranteed. Send me a trial order.

FRED LYONS
260 Aberdeen Street
FREDERICTON, N. B.

Get the Training

Take the advice of the winners, not the losers. A successful business man will inform you that it is necessary for you to have the right practical schooling to forge ahead.

Write for full particulars about our courses.

FREDERICTON BUSINESS COLLEGE
F. B. OSBORNE, Principal
Box 928 FREDERICTON, N.B.

A woman Channel swimmer embarking for France says she hopes to succeed this time for the sake of her two children. Children nowadays are so exacting. When the Great Orator has no particular reason to advance for feeling that his contention is correct he says it is founded on historical fact.

MRS. MARY D. COLBY
Public Stenographer
333 CHARLOTTE STREET
Work Done Neatly and Promptly.
TELEPHONE NO. 951-41.

Frederick H. Peters
BARRISTER-AT-LAW
Representing
THE MUTUAL LIFE
INSURANCE COMPANY
OF NEW YORK
Offices: York Street, over Royal Stores
Phone 947.

DR. G. R. LISTER
Dentist
BURCHILL-WILKINSON BLDG.
Queen Street, below Regent.
Phone 84-41

HANSON & DOUGHERTY
R. B. HANSON, K. C.
C. L. DOUGHERTY, B. A.
Barristers, Solicitors, etc.
CARLETON CHAMBERS
61 CARLETON ST. FREDERICTON



Cook's Regulating Compound

A safe, reliable, regulating medicine for women. Sold in three degrees of strength. No. 1, \$1; No. 2, \$3; No. 3, \$5. Sold by all druggists, or sent prepaid on receipt of price. Free pamphlet.

THE COOK MEDICINE CO.
Toronto (formerly Windsor)
The Proprietary and Patent Medicine Art
Registered 1902

THE DAILY MAIL

Is on Sale at the following places of business in the city:

D. H. GROWLEY, 612 Queen Street.
MISS QUINN, 147 Westmorland Street.
ALONZO STAPLES, 100 York Street.
A. J. HANLON, 83 Regent Street.
W. GRIEVES, Cor. Regent and King Streets.
RAY BARKER, Cor. Carleton and King Streets.
WESLEY ERB, 266 York Street.



Of Interest to the Women

CARE IN COLORS.

Navy blue often has the effect of heightening the color of a rather colorless person. For this reason the woman with gray eyes and potato colored hair often finds this her best color for street wear.

Greens are complimentary colors to reds and for this reason bring out the color of the cheek. Hence a bright green ought not to be worn by a woman with a too florid or ruddy skin. For the girl with rosy cheeks of a more delicate hue light shades of green—such as nile—should be worn. Darker shades of green usually look better with the woman of quite pronounced coloring—without too great ruddiness of skin.

Bright blue is complementary to yellow and for that reason heightens the effect of golden hair. Bright or light shades of blue ought never be worn by with markedly sallow or yellow skin because they bring out the worst tones.

Mauve and orchid ought to be worn by persons with rather delicate coloring. For the colorful brunette such shades are seldom suitable.

Pure white has a tendency to accentuate the yellow tones of a sallow skin. For this reason many persons look much better in cream color than in pure white.

Red is a color for clear blondes for certain brunettes, but never for the woman with tawny hair or ruddy cheeks.

CUP CUSTARDS.

Beat four to six eggs until the yolks and whites are well blended; add one half cup of sugar one fourth teaspoon of salt, and, gradually, one quart of milk, stirring (not beating) until sugar is melted; add one teaspoon of vanilla, strain into buttered glass baking cups and sprinkle tops with nutmeg. Cook in a moderate oven standing on several thicknesses of folded paper or in a shallow pan containing hot water to come up to half the height of glasses. Cook until firm, which may be determined by inserting a silver knife through the center of one of the custards; if the knife is clean when withdrawn the custard is done. It will require from twenty five to thirty minutes and the water surrounding the custards should not at any time boil.

MAPLE CUSTARD.

Make and bake as cup custards. Using six whole eggs or three whole eggs and six yolks one fourth teaspoon of salt, three cups of milk and one half cup of thick maple syrup. Bake in buttered glass custard cups this custard may be turned from the cups when cold. Serve with whipped cream.

CARAMEL CUSTARD.

Carmelize one half cup of sugar by stirring it over the fire until it is melted and of a delicate brown color. An omelet pan is best for this purpose. Add one fourth cup of hot water slowly and let stand until the caramel is dissolved. Beat three whole egg yolks until well blended; add three tablespoons of sugar and a few grains of salt; continue stir-

ring while adding the caramel and two cups of milk. Turn into buttered custard cups that have been dredged with granulated sugar and bake as above.

RHUBARB MARMALADE.

Wash and cut up unpeeled, 4 pounds rhubarb, chop 1 pound figs, chop pulp of 6 oranges and 2 lemons and peel of 2 oranges and 2 lemons and peel of 2 oranges and 1 lemon. Add 6 pounds granulated sugar and boil until thick, stirring often.

WEATHER

Oh, just like this the weather was that day,
Straight veils of rain, a curtain dropping down—
With primrose light slow burning through the gray,
And wind as clean as clover through the town ***
Then, muted song, the rain's withdrawn breath,
And skies as green as water, at the brow
Of some white ship; and peace, as of a death
Deferred, desired and accomplished Now
It is the same: the rain, the light, the sky,
The very feel of that lost day is here,
And so are we! ***** together
*** you and I ***
But older *** by how many years,
my dear?

FAITH BALDWIN.

(in New York Sun)

FINIS.

There was a man lived in Fort Wayne
He was so dreadful dumb
He tried to race a railroad train
He's now in Kingdom Come.

New Police Magistrate.

W. Emmet McMonagle has been appointed Sitting Police Magistrate for the City of Moncton in place of James C. Sherrin resigned.

FIRE ALARM LOCATION IN THE CITY

- 6 Argyle and York Sts.
- 7 Victoria Hospital.
- 8 Children's Aid Home.
- 12 Westmorland and Aberdeen Sts.
- 13 Northumberland and Saunders Sts.
- 14 Brunswick and Symthe Sts.
- 15 Charlotte and Smythe Sts.
- 16 George and Northumberland Sts.
- 17 King and Northumberland Sts.
- 21 Queen and York Sts.
- 23 York and George Sts.
- 24 Queen and Westmorland Sts.
- 25 Brunswick and Westmorland Sts.
- 26 Charlotte and Westmorland Sts.
- 27 King and York Sts.
- 28 Saunders and York Sts.
- 31 Queen and Regent Sts.
- 32 Needham and Regent Sts.
- 34 Queen and Carleton Sts.
- 35 Brunswick and Carleton Sts.
- 36 Charlotte and Carleton Sts.
- 37 George and Regent Sts.
- 38 King and Regent Sts.
- 43 St. John and Aberdeen Sts.
- 44 Queen and St. John Sts.
- 45 Brunswick and St. John Sts.
- 46 Charlotte and St. John Sts.
- 51 King and Church Sts.
- 52 George and Church Sts.
- 53 Union and Church Sts.
- 54 Shore St. and University Ave.
- 55 Brunswick St. and University Ave.
- 56 Lansdowne St. and Waterloo Row.
- 57 Grey St. and University Ave.
- 112 Smythe and Aberdeen Sts.
- 113 Argyle and Northumberland Sts.

Hard or Soft Corns Drop off in Foot Bath

This marvelous corn solvent affords immediate escape from foot agony. Do it now, and in this way: Spread a few drops of Putnam's Painless Corn Extractor over the corn or callous. The pain stops at once. Another application or two, followed by a hot foot bath, and the corn drops off. To get rid of corns, you must get Putnam's Painless everywhere.

Counter Check Books ALL SIZES AND STYLES

All Orders Filled Promptly and at Lowest Possible Prices.

Mail Orders Receive Careful Attention

The Mail Printing Co.

EINSTEIN IS CONFIRMED BY TEST, SAYS SIR OLIVER LODGE

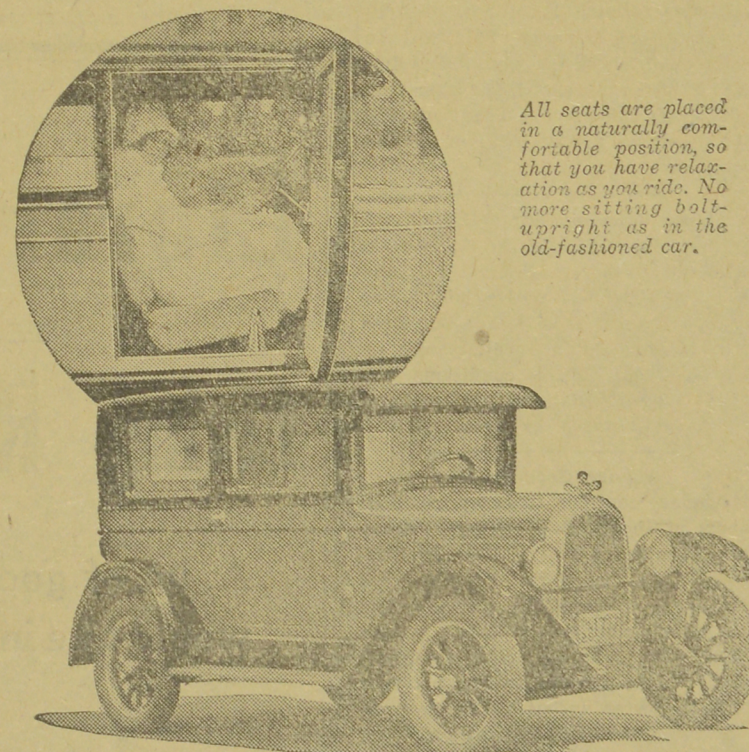
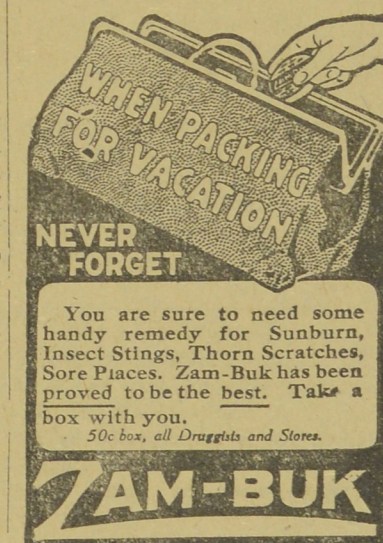
London, England, July 14.—Far from disproving the Einstein theory of relativity, as has been claimed, the experiments performed by Prof. Dayton C. Miller of the Case School of Applied Science, Cleveland at Mount Wilson, Cal., confirm one of the bases of the theory says Sir Oliver Lodge, famous English physicist in a letter to the weekly scientific journal Nature.

Prof. Miller repeated on a very extensive scale an experiment originally performed in 1887 at the Case school by Prof. A. A. Michaelson now at the University of Chicago and Prof. Edward Morely. The experiment used a very delicate instrument, called the interferometer, and was intended to test the motion of the earth in its orbit through the ether that was supposed to permeate all space. No such effect was noticed. In an effort to explain this apparent paradox the relativity theory was developed.

Repeat Earlier Experiments.

Sir Oliver says that he has been informed that Prof. Morley himself was doubtful about about the vast superstructure that had been erected on his comparatively few experiments and was anxious that it be repeated under different conditions and on a larger scale as Prof. Miller has done.

"The undoubted result of these repetitions," says Sir Oliver "has been to confirm the full result of Michaelson and Morely so far as regards the orbital motion of the earth and thereby establish one of the foundations on which the theory of relativity was at first based, up to what at that date had seemed to be the probable errors of experiment. Whether anything more can be deduced from the Miller experiments Sir Oliver thinks, is a matter still to be decided. Prof. Miller's "first reports claim," he says, "that the result on the top of a mountain was much greater than on a plain, could scarcely be accepted. If that had been true the ideas involved would have been ex-



Canada's First High-Speed European-Type Light Car

The distinctive body lines of the New Overland Whippet resemble the smartest custom-built automobiles of America and Continental Europe. Stand in front of this car and you can imagine yourself on the boulevards of France.

It will travel 55 miles an hour in perfect comfort . . . pick-up in 18 seconds from 5 to 30 miles an hour . . . go 35 miles on a gallon of gasoline . . . over 1000 miles on a gallon of oil.

Measured tests show that the Overland Whippet, with its 4-wheel brakes, will stop in two car lengths from a speed of 25 miles an hour.

The Overland Whippet is 5 feet, 8 inches high . . . not as tall as the average man. Yet it provides more room and comfort than you've ever found in any automobile of this class before.