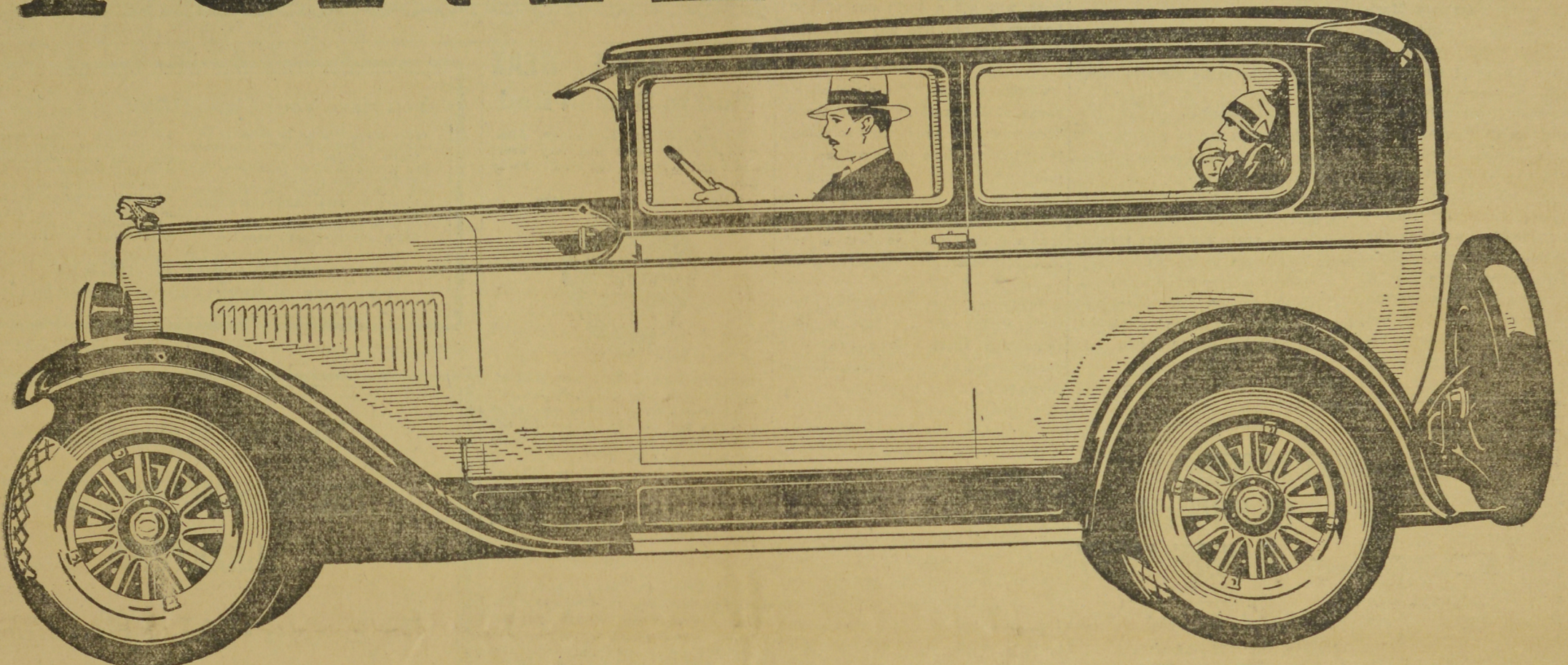
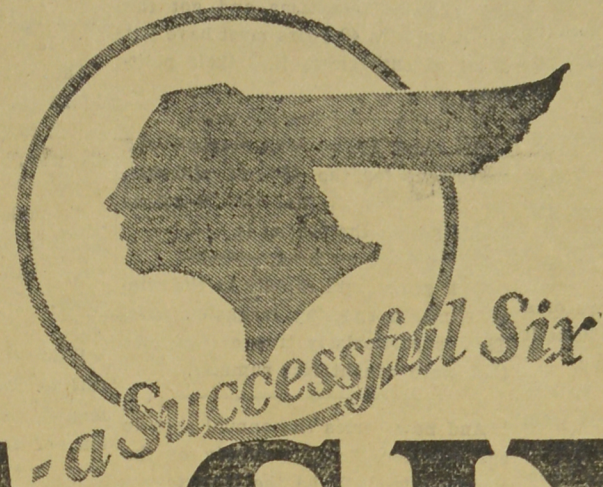


Announcing the New Series PONTIAC SIX

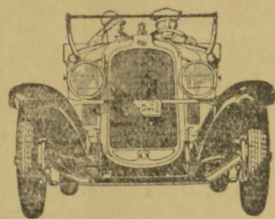


with **Smart New Style** and **Sweeping New Refinements**

AFTER two years of the most spectacular success ever accorded any new car, Pontiac Six is again making motor-car history . . . is bidding for even greater success.

In introducing the New Series Pontiac Six . . . new from radiator to tail-light . . . Pontiac is taking the greatest forward step in all its brilliant career.

Here is a car that is vividly and vitally new . . . with a tremendous reserve of power . . . with a compelling beauty, ultra stylish yet not extreme . . . with elements of comfort, luxury and safety never before combined in any six at or near its price . . .



An original and vivid type of beauty—distinctive, arresting, ultra-smart—but in no sense extreme! The New Series Pontiac Six takes a prominent place among the style leaders of the year.

2-DOOR SEDAN

\$950

At Factory, Oshawa
Government Taxes Extra

Here is a car conceived by the engineering staffs of Pontiac and General Motors . . . a car that reflects the utmost in Fisher craftsmanship . . . a car that has been tried and proved on the General Motors Proving Grounds before being presented to you . . . a car that demonstrates by its amazing value the General Motors policy of passing along to the consumer, the economies of volume purchasing and production.

Words cannot adequately describe it . . . See this remarkable car TODAY at our showrooms.

LOVEJOY SHOCK ABSORBERS

NEW FISHER BODIES—New lines, new Duco colors, new double beading, new elongated windows, new hood and cowl.

NEW FOUR-WHEEL BRAKES—Equalized and mechanically operated.

NEW CRANKCASE VENTILATION—eliminates crankcase condensation.

NEW GMR CYLINDER HEAD—Developed by General Motors Research. Proved on the General Motors Proving Ground. Reduces knocking and eliminates thump with any fuel.

NEW CARBURETOR—with accelerating pump, internal economizer and Venturi choke.

NEW MANIFOLDS AND MUFFLER—for more efficient fueling and exhaust gas scavenging.

EVEN GREATER POWER—achieved by the foregoing engine improvements.

NEW STEERING GEAR—for exceptionally easy steering. New steering wheel.

NEW INSTRUMENT PANEL—tri-cluster type. Indirectly lighted.

NEW THERMOSTAT—automatically assures proper temperature of cooling system water.

NEW STOP LIGHT—Tail-light unit.

NEW FUEL PUMP—with gasoline filter. Replacing conventional vacuum tank.

NEW WATER PUMP—balanced impeller type with oil feeding bushing.

NEW COINCIDENTAL LOCK—on instrument panel. Turning ignition key also locks transmission.

NEW GASOLINE GAUGE—on instrument panel. Liquid level indicator.

NEW CROSS-FLOW RADIATOR—Revolutionary new type cooling system. Virtually eliminates water vapor and alcohol losses.

FOUR WHEEL BRAKES

NEW CLUTCH—New disc clutch, dry plate type. Softer, smoother, more positive in action.

NEW FRAME—stronger, deeper. Adapted for Lovejoy Shock Absorbers. Includes new tire carrier.

NEW AXLES—front and rear.

NEW WHEELS—larger and more massive in appearance.

P-1228AC

SMITH FOUNDRY Co. Limited,
FREDERICTON, N. B.

PRODUCT OF GENERAL MOTORS OF CANADA, LIMITED