

Use
St. Charles Milk
and you'll have
better success
my dear

Experienced cooks are successful because they leave nothing to chance. They know their ingredients, mix them carefully and get the results desired.

Milk is most important in a majority of staple food recipes. But the quality and richness of ordinary milk is apt to vary considerably from day to day and many dishes fail to please because of the milk used.

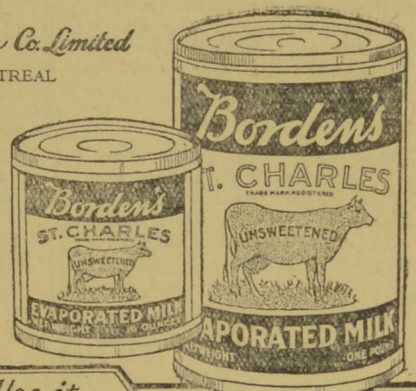
Borden's St. Charles Milk is so widely used by good cooks because it is always of exactly the same creamy richness. It can be depended on to give the dish that appetizing goodness that not only pleases the palate but nourishes the body as well. It can be used in rich recipes just as it comes from the can, or it may be diluted with an equal quantity of water. And it is so convenient. You can buy it at any grocery and it keeps perfectly in the pantry in the unopened tin. Order a few tins today.



Send for Free Recipe Book

Every woman will find the St. Charles Recipe Book helpful. It contains dozens of tested, simple recipes for soups, breads, cakes, puddings, desserts and candy. It is free. Write to

The Borden Co. Limited
MONTREAL



Borden's
ST. CHARLES *Use it Wherever the Recipe Calls for Milk* **MILK**

JOB PRINTING

All work guaranteed Finest Quality
and Artistic Workmanship
The Largest Plant in the City



LETTER HEADS
PROGRAMMES ENVELOPES CIRCULARS
BILL HEADS WEDDING INVITATIONS
REPORTS POSTERS CARDS BOOKS
BUTTER WRAPPERS HONEY LABELS
LEGAL FORMS AUCTION SALE HANGERS
and all other JOB PRINTING WORK
Come in and see our sample of any of the above
Orders by Mail Promptly Attended to

**We Aim to Satisfy The Most
Exacting Customer**

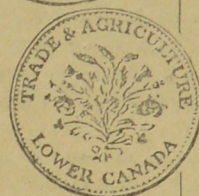
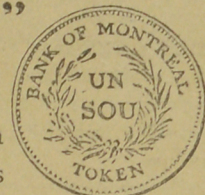
No Job too large or too small to receive our
immediate attention

MAIL PRINTING CO.
FREDERICTON, N. B.

It Pays to Advertise in the Mail

AN EARLY BANK OF MONTREAL "TOKEN"

FOUNDED before Canada had any currency of its own, the Bank of Montreal early obtained authorization from the Government to issue copper tokens for small change.



Reproduced herewith are the two sides of the "Bouquet" token, one of the earliest coins issued by the Bank. The intermingling of the rose, shamrock and thistle indicates the three branches of the British people—the English, Scotch and Irish—while the use of English on one side of the coin and French on the other is significant of the mingling of the two races in this country.

"Trade and Agriculture" indicates the early connection of the Bank with both urban and rural life in Canada.

Throughout its long history the Bank of Montreal has always been active in serving the financial needs of all the people.

**BANK OF
MONTREAL**

Established 1817

Total Assets in excess of \$830,000,000

FREDERICTON BRANCH, G. N. C. HAWKINS, MGR.
MARYSVILLE BRANCH, P. G. WEIR, MGR.

and villages, through the medium of the branches of the Bank of Montreal throughout Canada as a memento of his visit to the Dominion during its Diamond Jubilee Year. Through the courtesy and co-operation of the Honourable the Minister of Finance and the Honourable the Postmaster General, the services of His Majesty's Mail were promptly placed at our disposal and this greatly facilitated the distribution.

"With every sentiment of loyalty and devotion to His Royal Highness, I have the honour to be, Sir, Your obedient servant,

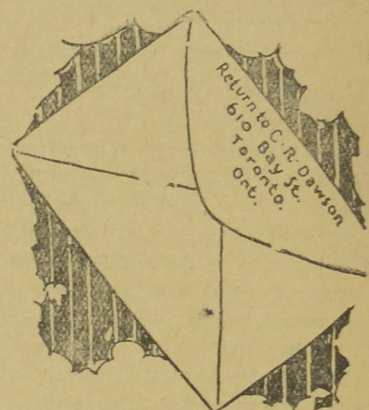
(Sgd.) VINCENT MEREDITH,
Chairman of the Board."

Quebec, Feb. 17.—The City of Quebec was yesterday ordered to pay \$2,236 for an accident dating back to 1921 when A. Guerette fell and fractured his left wrist on d'Artigny street.

Guerette sued for \$4,900, claiming this amount from Mrs. Rusk, alleging negligence in keeping the sidewalk clean. Mrs. Rusk replied that if the sidewalk was defective, it was the city's fault.

Following litigation over six years the City of Quebec was ordered to pay \$2,236.50, plus \$63.00 hospital costs.

BLUNDERS



WHY IS THIS WRONG?

The return address should be placed in the upper left hand corner of the address side of all mail matter. This facilitates its prompt return to the sender, if it is found to be undeliverable. Postal employees are glad that the habit of writing return addresses on the back of envelopes is becoming less prevalent.

Notice of Legislation

Notice is hereby given that a bill will be presented by the New Brunswick Dental Society to the Provincial Legislature at its coming session, to regulate the qualifications and registration of Dentists and the practice of Dentistry in the Province of New Brunswick.

Dated at Saint John, N. B., this 15th. day of February, 1928.

By order
FRANK A. GODSOE,
Sec'y-Treas.

TO LET—2 unfurnished pleasant front rooms. Communicating. Light house-keeping. Suit business lady. Central position, quiet house, no children or other roomers. March 1st or later. Rent moderate. Reply by letter to "Unfurnished", care Mail Office.

W. J. IRVINE L.D.S., D.D.S.

POST GRADUATE
CHICAGO COLLEGE OF
DENTAL SURGERY
OFFICE—
Corner YORK and KING STS.
PHONE 398.

Clothes
may not make
the man but they
improve his
appearance"
Beau Brummell

A wise man realizes that his clothes do not help him in business if they lack quality and correctness. So he comes to us to be outfitted. And we hold his confidence by creating the finest clothes for him.

"Tailors Of Quality"

Walker Bros., Ltd.
Phone 276-41.
TAILORS
365 QUEEN STREET

POINTERS ON TREATMENT OF THE EWES

(Experimental Farms Note.)

Sheep breeders should endeavour to have pregnant ewes quiet and contented. Two or three weeks before lambing, separate them from the rest of the flock in order that they may be given special attention. Remove all tags of long loose wool about the rear and the udder. If the weather is cold, however, do not shear the udder too closely because it may be injured by exposure.

Avoid danger of jamming and crowding by providing roomy lambing quarters. It is advisable to divide large flocks into divisions of not more than 25 ewes each. If the weather is cold have the lambing quarters warm and free from draughts, so that the new born lambs will not get chilled. Do not, however, neglect ventilation.

Strive to have the ewes thrifty at lambing time. Feed a small grain ration if they are in poor flesh or if the roughage is poor. If the ewes are in good condition and good clover hay and roots are available, they will do very well without grain until two or three weeks before lambing, when a small grain ration will help ensure a good milk flow. Do not feed too liberally with grain before lambing, however, as there is danger of milk fever.

At the Dominion Experimental Station, Fredericton, the best lambing results were obtained when the ewes were fed all the clover hay they would eat clean and from 3 to 5 pounds of turnips until two or three weeks before lambing when the ration was supplemented with one-half to one pound of a grain mixture (the amount fed depending on the condition of the ewes) composed of equal parts bran and oats and 10-20 per cent linseed meal.

PRINCE THANKED FOR HIS GIFT OF PEONIES

So numerous were the letters received acknowledging the peony plants which the Prince of Wales had distributed throughout Canada last fall as a memento of his visit that His Royal Highness has requested that his formal acknowledgment to the Bank of Montreal, through whom the letters were forwarded to him, be taken as constituting a general reply.

It will be remembered that His Royal Highness asked the Bank to undertake for him the distribution of Canadian-grown peony plants to His Excellency the Governor General, the Prime Minister and members of his Cabinet, the Lieutenant-Governors and Premiers of the Provinces; also to all cities, towns and incorporated villages throughout Canada. The distribution was made through the branches of the Bank with the co-operation and assistance of His Majesty's Mails, and the hundreds of letters received from mayors and other public officials showed how greatly the royal gift was appreciated. These letters, conveying the thanks of the various communities and expressing loyalty and devotion, were bound in a handsome portfolio and transmitted by the Bank of Montreal to Vice-Admiral Sir Lionel Halsey, Comptroller of the Prince of Wales' Household. The following letter from Sir Vincent Meredith, Bart., to the Comptroller, dated from the Head Office, Bank of Montreal, January 21st, accompanied the portfolio:

"Sir,—I have the honour to forward to you under separate cover for the information of His Royal Highness, the Prince of Wales, a portfolio containing copies of letters of appreciation and grateful thanks for the gift of peony plants that His Royal Highness so graciously sent to the cities, towns